

# IMPORTANT INSTRUCTIONS - OPERATING MANUAL

Model: 9236D, 9936D, 9942D,  
9236C, 9936C, 9942C



Drum Fan

## READ AND SAVE THESE INSTRUCTIONS

READ CAREFULLY BEFORE ATTEMPTING TO ASSEMBLE, INSTALL, OPERATE OR MAINTAIN THE PRODUCT DESCRIBED. PROTECT YOURSELF AND OTHERS BY OBSERVING ALL SAFETY INFORMATION. FAILURE TO COMPLY WITH INSTRUCTIONS COULD RESULT IN PERSONAL INJURY AND/OR PROPERTY DAMAGE!

RETAIN INSTRUCTIONS FOR FUTURE REFERENCE.

### GENERAL SAFETY INFORMATION

When using electrical appliances, basic precautions should always be followed to reduce the risk of fire, electric shock and injury to person, including the following:

**WARNING: TO REDUCE THE RISK OF FIRE, ELECTRIC SHOCK, OR INJURY TO PERSONS, OBSERVE THE FOLLOWING.**

1. Use this unit only in the manner intended by the manufacturer. If you have questions, contact the manufacturer.
2. Make certain that the power source conforms to the electrical requirements of the fan.
3. The power cord is equipped with a three-prong grounded plug that must be inserted into a matching receptacle. Under no circumstances must the grounding prong be cut off the plug. Where a two-prong wall receptacle is encountered, it must be replaced with a properly grounded three-prong receptacle installed in accordance with the National Electric Code (NEC) and all applicable local codes and ordinances. This work must be done by a qualified electrician, using copper wire only.

**WARNING: USE OF A THREE-PRONG TO TWO-PRONG ADAPTER IS NOT RECOMMENDED. IMPROPER CONNECTION MAY CREATE THE RISK OF ELECTROCUTION. USE OF SUCH ADAPTERS IS NOT PERMITTED IN CANADA.**

4. Where possible, avoid the use of extension cords. If they must be used, minimize the risk of overheating by ensuring that they are UL listed and of the proper gage and length. Never use a single extension cord to operate more than one fan.

5. Do not insert fingers or foreign objects into the fan. Do not block or tamper with the fan in any manner while it is in operation. Do not touch the fan while in operation or just after it has been turned off, as some parts may be hot enough to cause injury.
6. Unplug power cord before installing or servicing the fan.

**WARNING: DO NOT DEPEND UPON THE ON-OFF SWITCH AS THE SOLE MEANS OF DISCONNECTING POWER WHEN INSTALLING OR SERVICING THE FAN. ALWAYS UNPLUG THE POWER CORD.**

7. This fan is intended for general use ONLY. It must NOT be used in potentially dangerous locations such as flammable, explosive, chemical-laden or wet atmospheres.

**WARNING: TO REDUCE THE RISK OF FIRE OR ELECTRIC SHOCK, DO NOT USE THIS FAN WITH ANY SOLID STATE SPEED CONTROL DEVICE.**

8. Be sure fan is on a stable surface when operating, to avoid chance of it overturning.
9. DO NOT use fan in a window. Rain may create an electrical hazard.

## SAVE THESE INSTRUCTIONS

# OPERATING INSTRUCTIONS

## SECTION 1

### Operation

**WARNING:** THIS FAN SHOULD BE USED ONLY IN A CLEAN, DRY ENVIRONMENT. MOUNTING OF THIS PRODUCT OR USE IN ANY WAY OTHER THAN SPECIFIED IN THE INSTRUCTION SHEET WILL NULL AND VOID THE MANUFACTURERS WARRANTY.

1. Carefully unpack fan from the carton and place on a firm, level surface.
2. Plug cord into a properly grounded three-prong 120 V outlet and select the desired speed setting from the control switch located on the side of the fan (**Figure 1**).

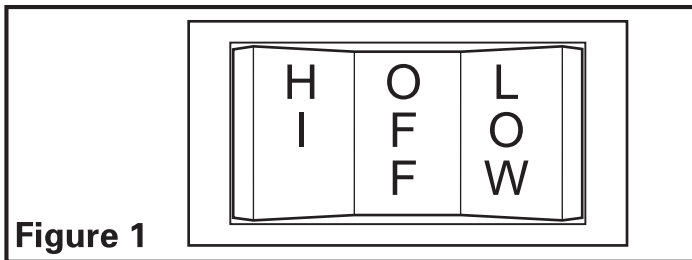


Figure 1

**WARNING:** DO NOT EXPOSE TO WATER OR RAIN.

## SECTION 2

### Use and Care

**WARNING:** MAKE SURE FAN IS UNPLUGGED BEFORE STARTING INSTALLATION OR SERVICING.

1. **Cleaning the Fan:** Use a mild detergent, such as dishwashing liquid, and dry with a soft cloth. NEVER USE ANY ABRASIVE PADS OR SCOURING POWDERS. Completely dry all parts before reconnecting to power supply. NEVER IMMERSE ELECTRICAL PARTS IN WATER.
2. If fan guards have been removed for any reason, reinstall before reconnecting to power source or operating fan.

**CAUTION:** DO NOT USE GASOLINE, BENZINE, THINNER, HARSH CLEANERS, ETC. WHICH WILL DAMAGE THE FAN.

3. **Storage:** When not in use, keep fan in a clean dry place.

**MOTOR IS PERMANENTLY LUBRICATED.**

## Troubleshooting Guide

Trouble	Probable Cause	Suggested Remedy
1. Fan does not operate.	1a. A fuse may be blown or a circuit tripped. 1b. Fan is not plugged in. 1c. A speed has not been selected. 1d. Motor has stopped operating	1a. Replace fuse or reset circuit breaker. 1b. Plug fan into a properly grounded three-prong outlet. 1c. Using the switch on the fan's controls, select a speed. 1d. Call your dealer for service.
2. Fan is making rattling noise.	2a. Grill is loose. 2b. Wheels are loose.	2a. Unplug fan and check to make sure all bolts holding grill in place are secure. 2b. Unplug fan and check to make sure wheel bolts are secure.

## LIMITED WARRANTY

**WHAT THIS WARRANTY COVERS:** This product is warranted against defects in workmanship and/or materials.

**HOW LONG THIS WARRANTY LASTS:** This warranty extends only to the original purchaser of the product and lasts for one (1) year from the date of original purchase or until the original purchaser of the product sells or transfers the product, whichever first occurs.

**WHAT AIR KING WILL DO:** During the warranty period, Air King will, at its sole option, repair or replace any part or parts that prove to be defective or replace the whole product with the same or comparable model.

**WHAT THIS WARRANTY DOES NOT COVER:** This warranty does not apply if the product was damaged or failed because of accident, improper handling or operation, shipping damage, abuse, misuse, unauthorized repairs made or attempted. This warranty does not cover shipping costs for the return of products to Air King for repair or replacement. Air King will pay return shipping charges from Air King following warranty repairs or replacement.

ANY AND ALL WARRANTIES, EXPRESSED OR IMPLIED (INCLUDING, WITHOUT LIMITATION, ANY IMPLIED WARRANTY OF MERCHANTABILITY), LAST ONE YEAR FROM THE DATE OF ORIGINAL PURCHASE OR UNTIL THE ORIGINAL PURCHASER OF THE PRODUCT SELLS OR TRANSFERS THE PRODUCT, WHICHEVER FIRST OCCURS AND IN NO EVENT SHALL AIR KING'S LIABILITY UNDER ANY EXPRESS OR IMPLIED WARRANTY INCLUDE INCIDENTAL OR CONSEQUENTIAL DAMAGES FROM ANY CAUSE WHATSOEVER. NOT WITHSTANDING ANYTHING TO THE CONTRARY, IN NO EVENT SHALL AIR KING'S LIABILITY UNDER ANY EXPRESS OR IMPLIED WARRANTY EXCEED THE PURCHASE PRICE OF THE PRODUCT AND ANY SUCH LIABILITY SHALL TERMINATE UPON THE EXPIRATION OF THE WARRANTY PERIOD.

Some states and provinces do not allow limitations on how long an implied warranty lasts, or the exclusion or limitation of incidental or consequential damages, so these exclusions or limitations may not apply to you. This warranty gives you specific legal rights. You may also have other rights which vary from state to state and province to province.

**HOW TO GET SERVICE:** Proof of purchase is required before a warranty claim will be accepted.

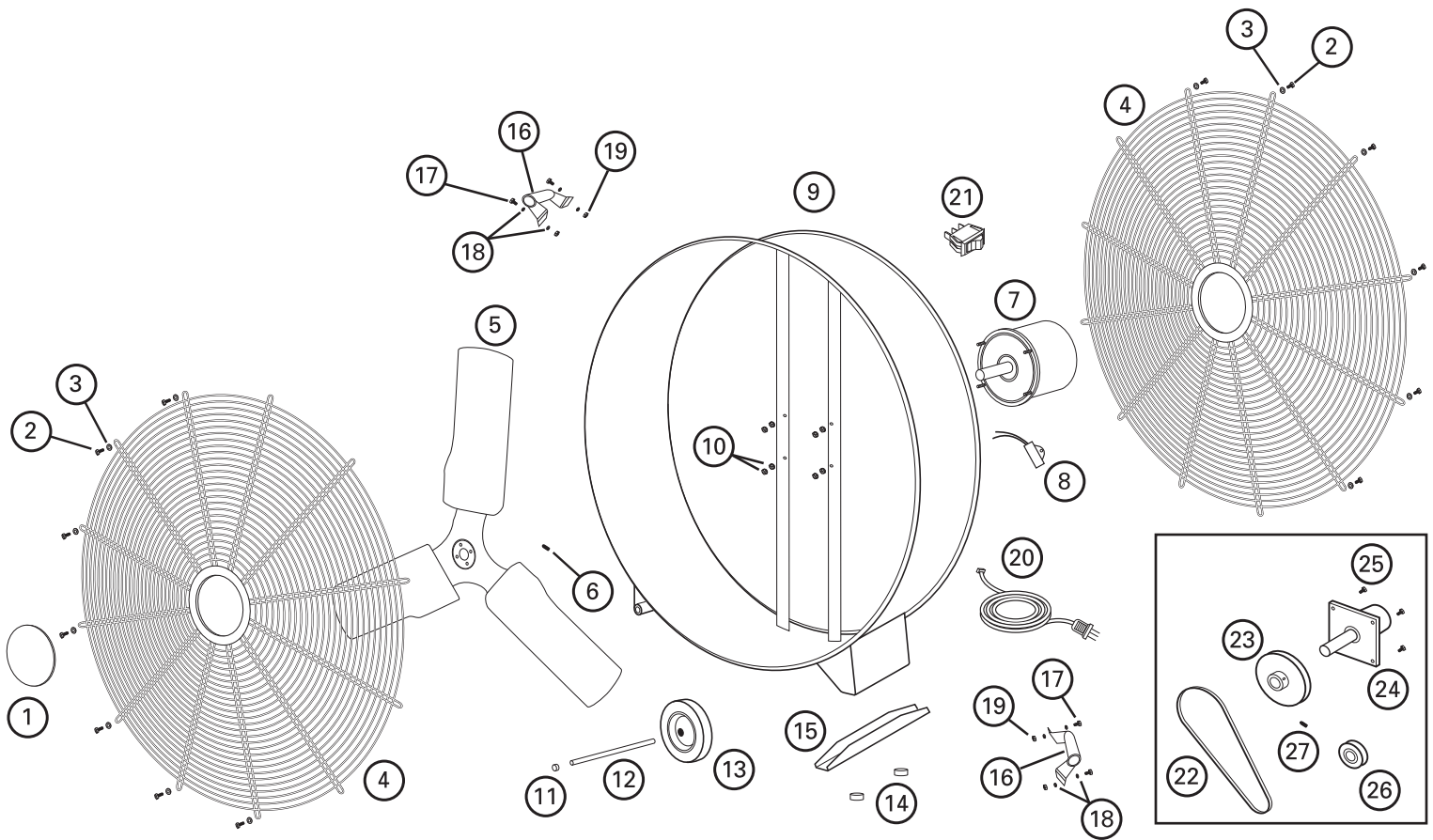
**CUSTOMER SERVICE:**

Toll-Free (800) 465-7300

Our Customer Service team is available to assist you with product questions, service center locations, and replacement parts. They can be reached Monday through Friday, 8:00 am - 5:00 pm Eastern. Please have your model number available to expedite service. Please do not return product to place of purchase.

PARTS FOR DISCONTINUED, OBSOLETE AND CERTAIN OTHER PRODUCTS MAY NOT BE AVAILABLE. DUE TO SAFETY REASONS, MANY ELECTRONIC COMPONENTS AND MOST HEATER COMPONENTS ARE NOT AVAILABLE TO CONSUMERS FOR INSTALLATION OR REPLACEMENT.

# REPLACEMENT PARTS DIAGRAM



#	Qty.	Description	Replacement Part #
1	2	Name Plate	5S1599000
2	24	Grill Screw	5S1599001
3	24	Washer	5S1599023
4	2	Grill	5S1599005
5	1	Blade	5S1599008
6	1	Set Screw	5S1599010
7	1	Motor (belt drive)	5S1599024
	1	Motor (direct drive)	5S1599025
8	1**	Capacitor	5S1599026
9	1	Drum	5S1599013
10	8	Nut with washer	5S1599027
11	2	Wheel Cap	5S1599028
12	1	Wheel Shaft	5S1599029
13	2	Wheel	5S1599017
14	2	Rubber Feet	5S1599018
15	1	Extension Bar	5S1599030

\*\* Direct Driven models only

#	Qty.	Description	Replacement Part #
16	2	Handle	5S1599019
17	4	Screw	5S1599020
18	8	Lockwasher	5S1599021
	4	Nut	5S1599022
20	1	Power Cord/Strain Relief (US)	5S1599031
	1	Power Cord/Strain Relief (Canada)	5S1599032
21	1	Switch	5S1599033
22	1*	Belt	5S1599034
23	1*	Large Pulley (36" models)	5S1599035
	1*	Large Pulley (42" models)	5S1599036
24	1*	Belt Shaft Assembly	5S1599037
25	1*	Screw	5S1599038
26	1*	Small Pulley (36" models)	5S1599039
	1*	Small Pulley (42" models)	5S1599040
27	1*	Set Screw	5S1599041

\* Belt Driven models only

Place of Purchase: \_\_\_\_\_

Model Number: \_\_\_\_\_

Purchase Date: \_\_\_\_\_

## Free Manuals Download Website

<http://myh66.com>

<http://usermanuals.us>

<http://www.somanuals.com>

<http://www.4manuals.cc>

<http://www.manual-lib.com>

<http://www.404manual.com>

<http://www.luxmanual.com>

<http://aubethermostatmanual.com>

Golf course search by state

<http://golfingnear.com>

Email search by domain

<http://emailbydomain.com>

Auto manuals search

<http://auto.somanuals.com>

TV manuals search

<http://tv.somanuals.com>