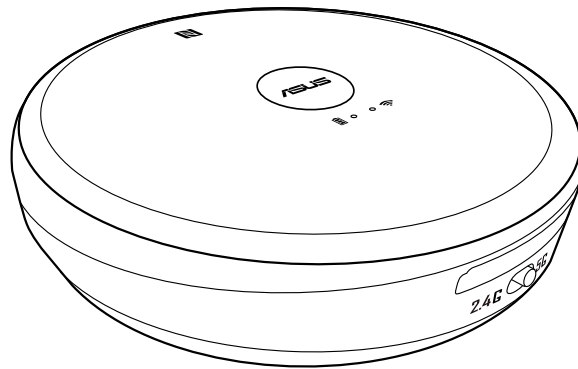




Travelair AC

Wireless Storage Drive



User Guide

E12135

Revised Edition V3

October 2016

Copyright © 2016 ASUSTeK Computer Inc. All Rights Reserved.

No part of this manual, including the products and software described in it, may be reproduced, transmitted, transcribed, stored in a retrieval system, or translated into any language in any form or by any means, except documentation kept by the purchaser for backup purposes, without the express written permission of ASUSTeK Computer Inc. ("ASUS").

Product warranty or service will not be extended if: (1) the product is repaired, modified or altered, unless such repair, modification or alteration is authorized in writing by ASUS; or (2) the serial number of the product is defaced or missing.

ASUS PROVIDES THIS MANUAL "AS IS" WITHOUT WARRANTY OF ANY KIND, EITHER EXPRESS OR IMPLIED, INCLUDING BUT NOT LIMITED TO THE IMPLIED WARRANTIES OR CONDITIONS OF MERCHANTABILITY OR FITNESS FOR A PARTICULAR PURPOSE. IN NO EVENT SHALL ASUS, ITS DIRECTORS, OFFICERS, EMPLOYEES OR AGENTS BE LIABLE FOR ANY INDIRECT, SPECIAL, INCIDENTAL, OR CONSEQUENTIAL DAMAGES (INCLUDING DAMAGES FOR LOSS OF PROFITS, LOSS OF BUSINESS, LOSS OF USE OR DATA, INTERRUPTION OF BUSINESS AND THE LIKE), EVEN IF ASUS HAS BEEN ADVISED OF THE POSSIBILITY OF SUCH DAMAGES ARISING FROM ANY DEFECT OR ERROR IN THIS MANUAL OR PRODUCT.

SPECIFICATIONS AND INFORMATION CONTAINED IN THIS MANUAL ARE FURNISHED FOR INFORMATIONAL USE ONLY, AND ARE SUBJECT TO CHANGE AT ANY TIME WITHOUT NOTICE, AND SHOULD NOT BE CONSTRUED AS A COMMITMENT BY ASUS. ASUS ASSUMES NO RESPONSIBILITY OR LIABILITY FOR ANY ERRORS OR INACCURACIES THAT MAY APPEAR IN THIS MANUAL, INCLUDING THE PRODUCTS AND SOFTWARE DESCRIBED IN IT.

Products and corporate names appearing in this manual may or may not be registered trademarks or copyrights of their respective companies, and are used only for identification or explanation and to the owners' benefit, without intent to infringe.

Safety Information

In order to maintain compliance with the FCC RF exposure guidelines, this equipment should be installed and operated with a minimum distance [5mm] between the radiator and your body. Use only with supplied antenna. Unauthorized antenna, modification, or attachments could damage the transmitter and may violate FCC regulations.

CAUTION! Any changes or modifications not expressly approved in this manual could void your authorization to use this device.

Federal Communications Commission Statement

This device complies with Part 15 of the Federal Communications Commission (FCC) Rules. Operation is subject to the following two conditions:

- 1) This device may not cause harmful interference.
- 2) This device must accept any interference received, including interference that may cause undesired operation.

This equipment has been tested and found to comply with the limits for a Class B digital device, pursuant to Part 15 of the FCC Rules.

These limits are designed to provide reasonable protection against harmful interference in a residential installation.

This equipment generates, uses and can radiate radio frequency energy and, if not installed and used in accordance with the instructions, may cause harmful interference to radio communications.

Users must not modify this device. Modifications by anyone other than the party responsible for compliance with the rules of the Federal Communications Commission(FCC) may void the authority granted under FCC regulations to operate this device.

However, there is no guarantee that interference will not occur in a particular installation.

If this equipment does cause harmful interference to radio or television reception, which can be determined by turning the equipment off and on, the user is encouraged to try to correct the interference by one or more of the following measures:

- Reorient or relocate the receiving antenna.
- Increase the separation between the equipment and receiver.
- Connect the equipment into an outlet on a circuit different from that to which the receiver is connected.
- Consult the dealer or an experienced radio/TV technician for help.

CAUTION! Any changes or modifications not expressly approved by the party responsible for this device could void your authority to operate the equipment.

This device complies with Part 15 of the FCC Rules. Operation is subject to the following two conditions: (1) this device may not cause harmful interference, and (2) this device must accept any interference received, including interference that may cause undesired operation.

Caution Statement of the FCC Radio Frequency Exposure

This Wireless LAN radio device has been evaluated under FCC Bulletin OET 65C and found compliant to the requirements as set forth in CFR 47 Sections 2.1091, 2.1093, 15.247(b)(4) addressing RF Exposure from radio frequency devices. The radiation output power of this Wireless LAN device is far below the FCC radio frequency exposure limits. Nevertheless, this device shall be used in a manner that the potential for human contact during normal operation is limited to usage as a mobile or portable device. Use in a body-worn way is strictly prohibited. When using this device, a certain separation distance between antenna and nearby persons has to be kept to ensure RF exposure compliance. In order to comply with the RF exposure limits established in the ANSI C95.1 standards, the distance between the antennas and the user should not be less than 5mm.

RF Exposure Information (SAR)

This device meets the government's requirements for exposure to radio waves. This device is designed and manufactured not to exceed the emission limits for exposure to radio frequency (RF) energy set by the Federal Communications Commission of the U.S. Government. The exposure standard employs a unit of measurement known as the Specific Absorption Rate, or SAR. The SAR limit set by the FCC is 1.6 W/kg. Tests for SAR are conducted using standard operating positions accepted by the FCC with the EUT transmitting at the specified power level in different channels

The FCC has granted an Equipment Authorization for this device with all reported SAR levels evaluated as in compliance with the FCC RF exposure guidelines. SAR information on this device is on file with the FCC and can be found under the Display Grant section of www.fcc.gov/eot/ea fccid after searching on FCC ID: QT7ASUSWSDA1. To ensure that RF exposure levels remain at or below the tested levels, use a belt-clip, holster, or similar accessory that maintains a minimum separation distance of 5mm between your body and the device.

Max. SAR measurement (1g):

2.4GHz: 0.56 W/kg

5GHz: 0.81 W/kg

Rechargeable Battery Recycling Service in North America



For US and Canada customers, you can call 1-800-822-8837 (toll-free) for recycling information of your ASUS products' rechargeable batteries.

Regional Notice for California



WARNING! This product may contain chemicals known to the State of California to cause cancer, and birth defects or other reproductive harm. Wash hands after handling.

Proper Disposal



DO NOT throw the product in municipal waste. This product has been designed to enable proper reuse of parts and recycling. This symbol of the crossed out wheeled bin indicates that the product (electrical and electronic equipment) should not be placed in municipal waste. Check local regulations for disposal of electronic products.



DO NOT throw the battery in municipal waste. This symbol of the crossed out wheeled bin indicates that the battery should not be placed in municipal waste.

Caution: Risk of explosion if Battery is replaced by an incorrect type. Dispose of used batteries according to the instructions

Use your device in an environment with ambient temperatures between 5°C (41°F) and 35°C (95°F).

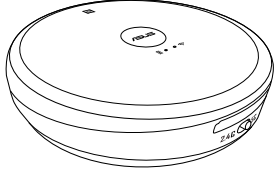
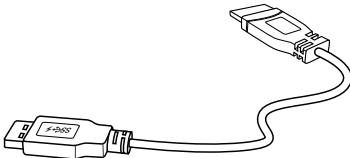
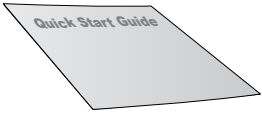

Contents

Travelair AC specifications summary.....	7
Package contents	7
Getting to know your Travelair AC	8
Charging your Travelair AC	9
Installing / removing a memory card.....	9
Connecting your mobile device.....	9
Connecting via NFC One Touch	11
Assigning unique SSID and password for your Travelair AC	12
Setting up the admin/guest password.....	13
Changing the admin/guest password.....	15
Connecting to the Internet.....	17
Copying files from mobile device to Travelair AC.....	18
Sharing files to guest users.....	20
Accessing shared files.....	22
Sharing files via Facebook or email.....	23
Connecting to your Windows® PC wirelessly.....	25
Connecting to your Mac PC wirelessly	27
Frequently Asked Questions (FAQs)	30

Travelair AC specifications summary

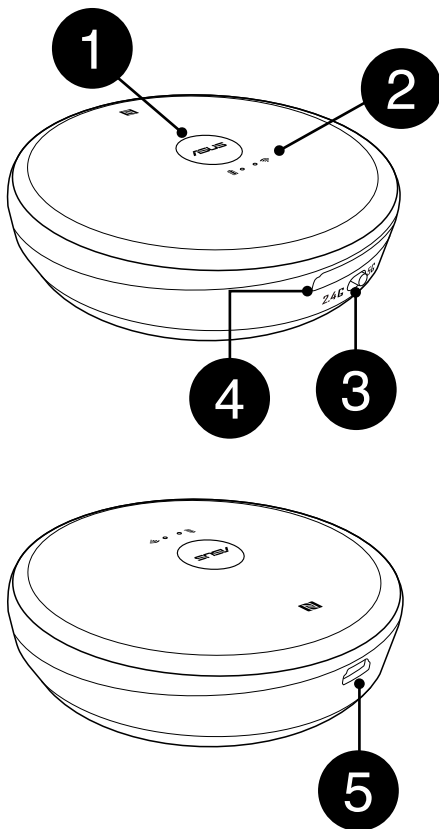
Interface	USB 2.0 / Wi-Fi
Drive Capacity	32 GB
Battery	Non-replaceable Lithium-ion battery
Dimension	86 x 86 x 21 mm
Weight	120 g
Supported devices	<p>iOS mobile device: iPad, iPhone, and iPod Touch (iOS 7 and later version)</p> <p>Android mobile device: Tablet and smartphone (Android 4.0 and later version)</p> <p>Windows® computer: Windows® 7, Windows® 8, and later version</p> <p>Mac computer: Mac OS x 10.6 or later version</p>
Supported file types	<p>iOS devices</p> <p>Photos: .jpg, .tiff, .bmp, .gif</p> <p>Videos: .mp3, .mp4, .mov</p> <p>Music: .mp3, .mp4, .wav, .aiff</p> <p>Documents: .xls/.xlsx, .doc/.docx, .pdf, .txt, .ppt/.pptx</p> <p>Android and Windows® devices</p> <p>Depends on the file types that your device apps support</p>



Package contents

 <p>ASUS Travelair AC</p>	 <p>USB 2.0 power cable</p>
 <p>Quick Start Guide</p>	 <p>Warranty card</p>

NOTE: If any of the items is damaged or missing, contact your retailer.

Getting to know your Travelair AC



1	Power button Press this button to turn your Travelair AC on/off.
2	LED indicators Shows the status of your Travelair AC. <ul style="list-style-type: none"> <li data-bbox="922 488 1326 607">  Blinking blue: Long press the power button for about two (2) seconds to establish Wi-Fi connection <li data-bbox="986 613 1267 642"> Solid blue: Wi-Fi is ready <li data-bbox="930 658 1331 712">  Blinking green: Travelair AC is booting up <li data-bbox="986 719 1358 745"> Solid green: Travelair AC is ready
3	2.4GHz/5GHz toggle button. Slide this button leftward or rightward to toggle between 2.4GHz or 5GHz band.
4	SD card slot Insert a Secure Digital™ (SD) card into this slot.
5	USB port Insert the bundled USB cable into the port to charge your Travelair AC or connect it to your computer.*

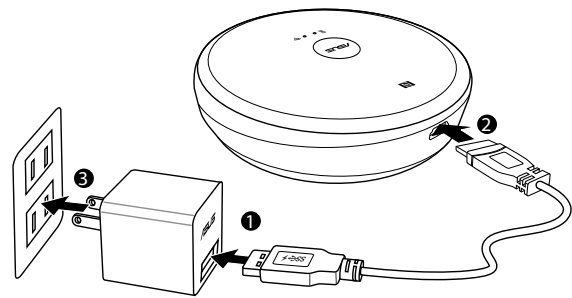
NOTE: *To use your Travelair AC as a standard hard drive, turn it off before connecting it to your computer.

Charging your Travelair AC

Fully charge your device for at least eight (8) hours when using it for the first time.

To charge your Travelair AC:

1. Connect the USB 2.0 connector into the USB port of the power adapter.
2. Open the USB 2.0 interface port compartment and connect the other end of the USB 2.0 cable to your Travelair AC.
3. Plug the power adapter into a wall socket.



NOTE: The ASUS power adapter is purchased separately.

Installing / removing a memory card

Your Travelair AC supports a Secure Digital™ (SD) memory card with up to 256 GB capacity.

To install/remove a memory card:

- Insert the SD card into the slot until it is securely in place. To remove, push to eject then remove the SD card from the slot.

Connecting your mobile device

Connect your mobile device to wirelessly view or play media files such as photos, videos, or music from your Travelair AC. You can also share your stored media files to your guest users, to Facebook, or an email account.

NOTES:

- Ensure that the Wi-Fi function in your mobile device is turned on.
 - You can also connect your NFC-enabled device to your Travelair AC. For details, refer to the section **Connecting via the NFC One Touch**.
-

To connect your mobile device:

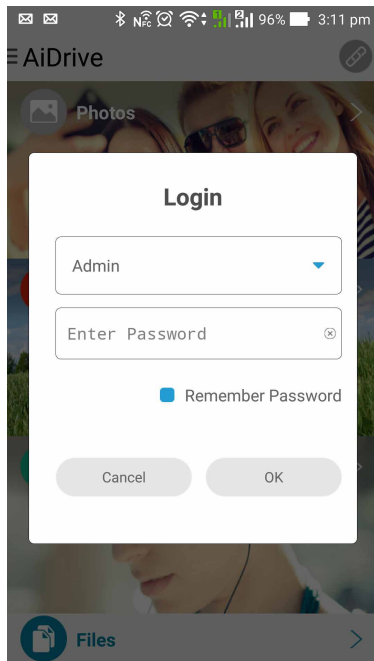
1. On your Travelair AC, long press the power button until the blinking blue Wi-Fi icon appears.
2. On your mobile device, tap the SSID or network name **Travelair-XXXX** to connect to your Travelair AC.
3. When prompted, enter the default password **12345678**.

NOTE: You can assign unique SSID or network name and password for your Travelair AC. For details, refer to the section **Assigning unique SSID and password to your Travelair AC**.

4. Ensure that you download and install the ASUS AiDrive app on your mobile device.

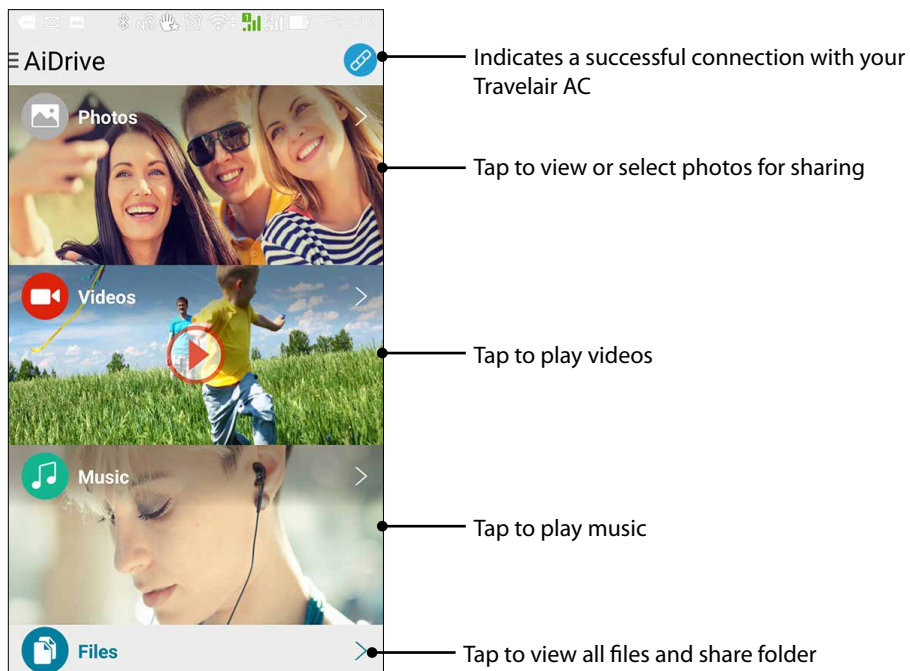
NOTE: Download the ASUS AiDrive app from Google Play, App Store, or Amazon Appstore.

5. Launch the ASUS AiDrive app. There is no default password, so click **OK** when logging in for the first time.



IMPORTANT! Set up your password for your Travelair AC to secure it from unauthorized access. For details, refer to the section **Setting up the admin/guest password**.

6. You can now wirelessly access the media files from your Travelair AC.

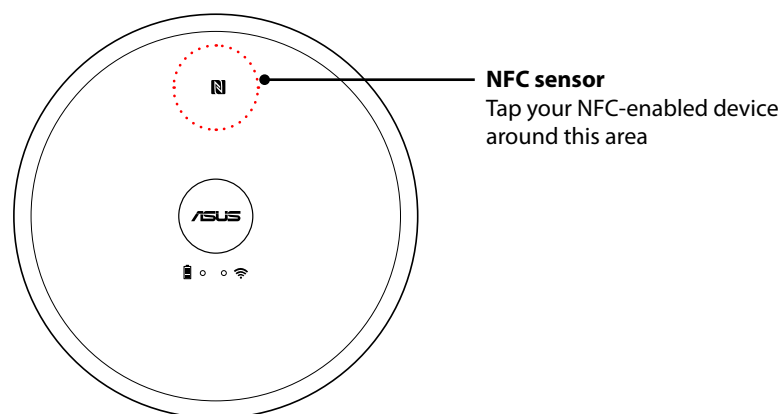


Connecting via NFC One Touch

With just one touch or tap of your NFC-enabled mobile device on your Travelair AC, you can gain wireless access to your stored media files.

To connect via NFC One Touch:

1. Turn on the NFC function of your mobile device.
2. Turn on your Travelair AC.
3. Touch or tap your NFC-enabled device on the area of the NFC sensor.
4. The AiDrive app launches automatically. You can now log into the AiDrive app and wirelessly access the media files from your Travelair AC.



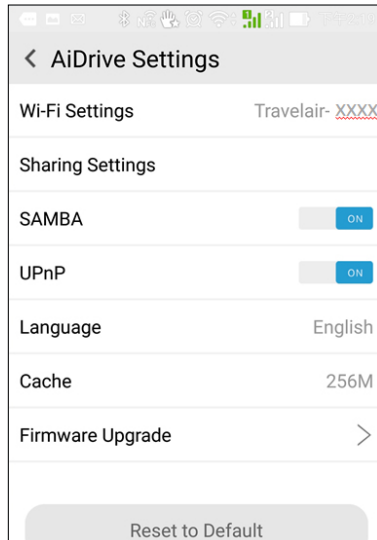
IMPORTANT! Your NFC-enabled mobile device must run on Android 4.0 or later version.

Assigning unique SSID and password for your Travelair AC

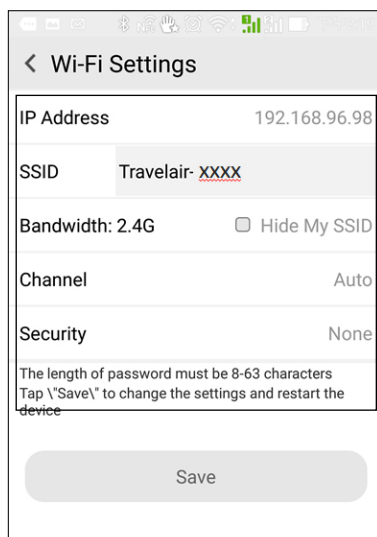
You can change the default SSID and password of your Travelair AC.

To assign unique SSID and password for your Travelair AC:

1. On the AiDrive home screen, swipe from the left to display the app menu.
2. Tap **AiDrive Settings**.



3. Tap **Wi-Fi Settings** and in the **Name** field, enter a unique name with at least eight (8) characters.
4. In the **Security** field, enter 8-63 alphanumeric characters as the password.
5. When done, tap **Save**.
6. You need to restart your device for the changes to take effect.



Tap to set up the corresponding settings

NOTE: With UPnP enabled, people and devices on your network can access pictures, music, or videos on your Travelair AC.

Setting up the admin/guest password

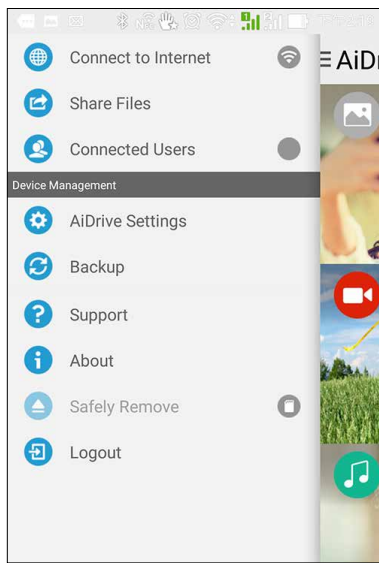
Set up the admin and guest passwords to secure your Travelair AC and its contents from unauthorized access.

NOTE: Up to five (5) users, including the admin user, can simultaneously access the Travelair AC.

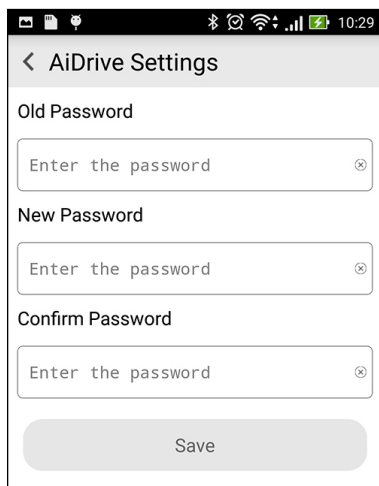
Setting up the admin password

To set up the admin password:

1. On the AiDrive home screen, swipe from the left to display the app menu.
2. Tap **AiDrive Settings**.



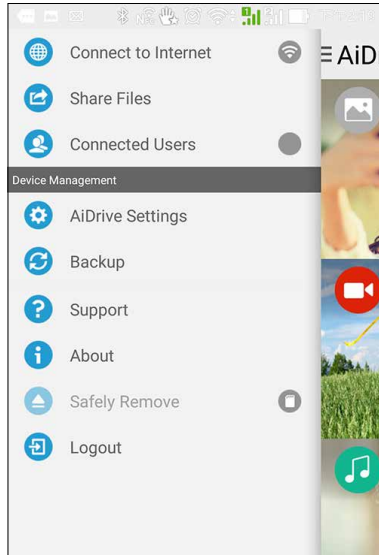
3. Tap **Sharing Settings > Admin Password**.
4. When setting up the admin password for the first time, leave the **Old Password** field blank.
5. Enter 5-32 alphanumeric characters in the **New Password** field.
6. Enter the admin password again in the **Confirm Password** field, then tap **Save**.
7. Log out to activate the admin password.



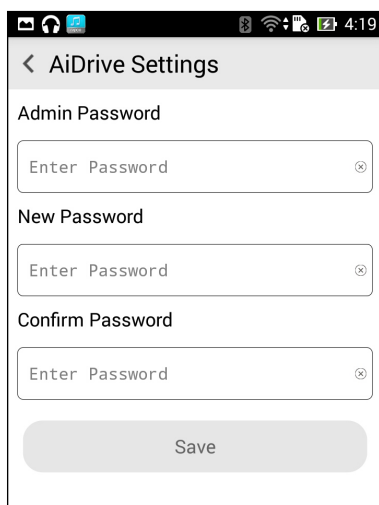
Setting up the guest password

To set up the guest password:

1. On the AiDrive home screen, swipe from the left to display the app menu.
2. Tap **AiDrive Settings**.



3. Tap **Sharing Settings**, then turn **Allow Guest User** to **ON**.
4. Tap **Guest Password**.
5. Enter the **Guest Password**. If you have not set this password, leave this field blank.
6. Enter 5-32 alphanumeric characters in the **New Password** field.
7. Enter the guest password again in the **Confirm Password** field, then tap **Save**.
8. Log out to activate the guest password.

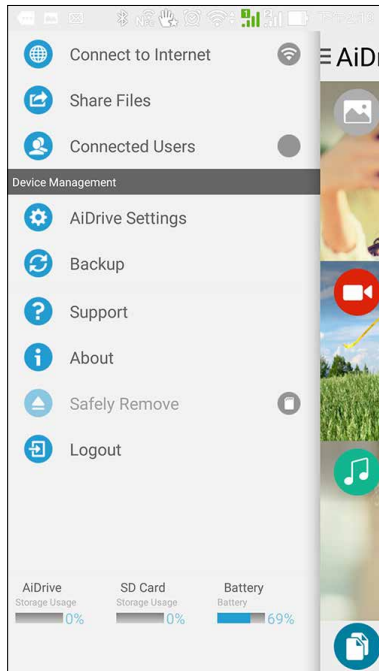


Changing the admin/guest password

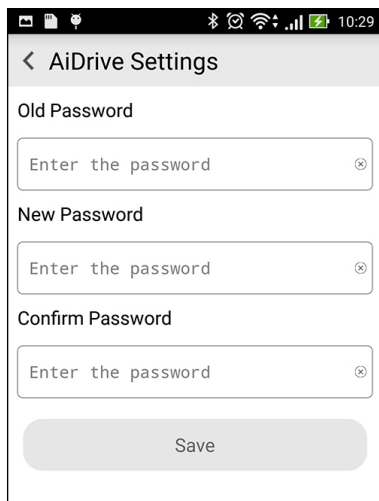
Changing the admin password

To change the admin password:

1. On the AiDrive home screen, swipe from the left to display the app menu.
2. Tap **AiDrive Settings**.



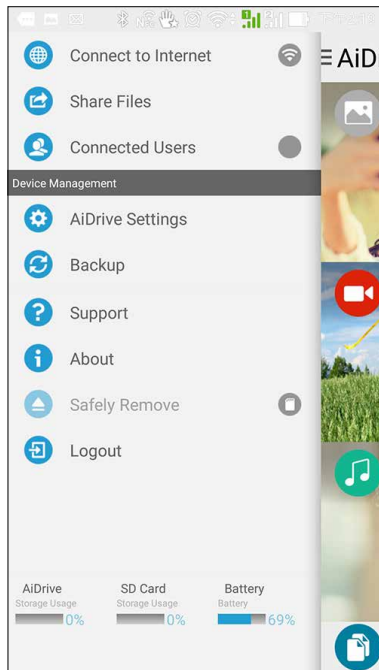
3. Tap **Sharing Settings > Admin Password**.
4. On the **Old Password** field, enter the previously assigned admin password.
5. Enter 5-32 alphanumeric characters in the **New Password** field.
6. Enter the admin password again in the **Confirm Password** field, then tap **Save**.
7. Log out to activate the new admin password.



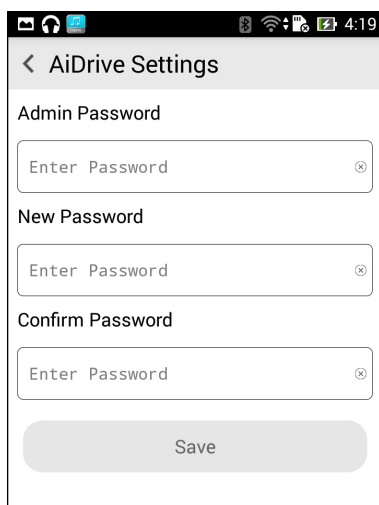
Changing the guest password

To change the guest password:

1. On the AiDrive home screen, swipe from the left to display the app menu.
2. Tap **AiDrive Settings**.



3. Tap **Sharing Settings**.
4. Tap **Guest Password**.
5. On the **Guest Password** field, enter the previously assigned guest password.
6. Enter 5-32 alphanumeric characters in the **New Password** field.
7. Enter the guest password again in the **Confirm Password** field, then tap **Save**.
8. Log out to activate the new guest password.

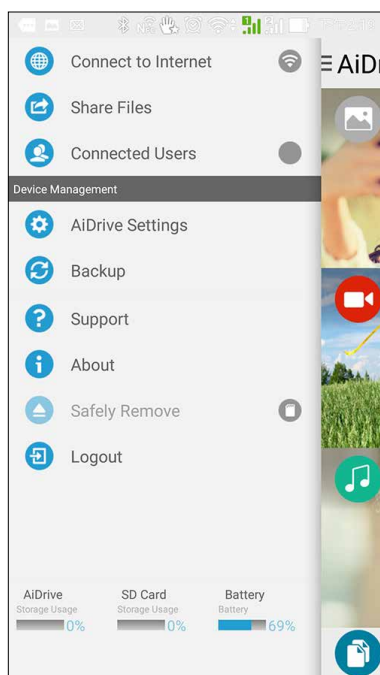


Connecting to the Internet

Connect to the Internet to share your media files to Facebook or an email account.

To connect to the Internet:

1. On the AiDrive home screen, swipe from the left to display the app menu.
2. Tap **Connect to the Internet**.
3. Slide **Wi-Fi Connection** to **ON**.
4. From the list, tap the Wi-Fi network that you want to connect to.
5. When prompted, enter the security passkey for the Wi-Fi network. AiDrive disconnects then reconnects to your mobile device.
6. You can now start sharing your media files to Facebook or an email account.

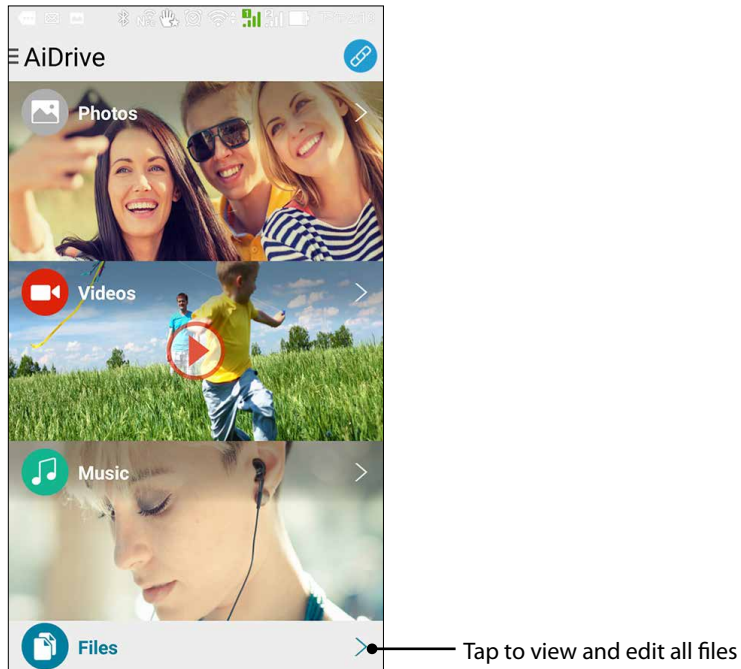


Copying files from mobile device to Travelair AC

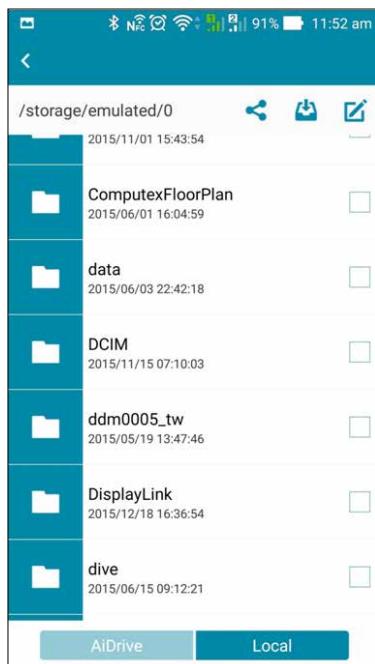
You can wirelessly copy your files from your mobile device to your Travelair AC.


To copy files from mobile device to Travelair AC:

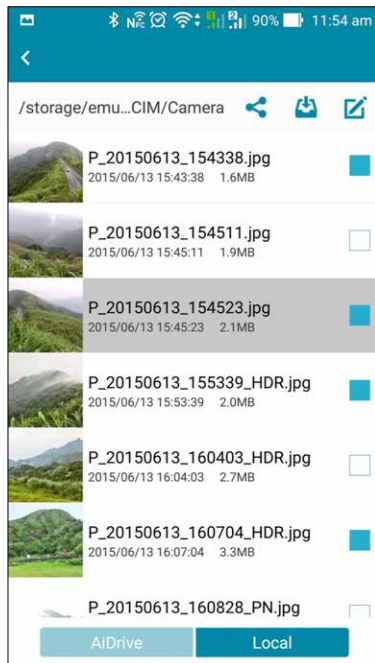
1. On the AiDrive home screen, tap **Files**.



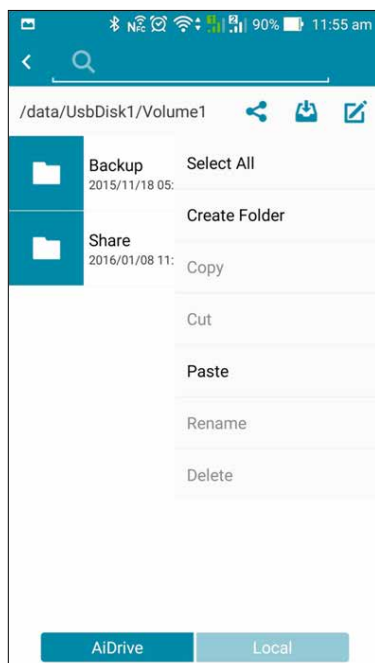
2. Tap **Local**, then tap the folder containing the files you want to copy from your mobile device.



3. Select the files, then tap  > **Copy**.



4. Tap **AiDrive**, go to the folder you want to copy the files to, then tap **Paste**. Wait until the process is finished.



Sharing files to guest users

You can share your media files from your Travelair AC or mobile device to your authorized guest users.

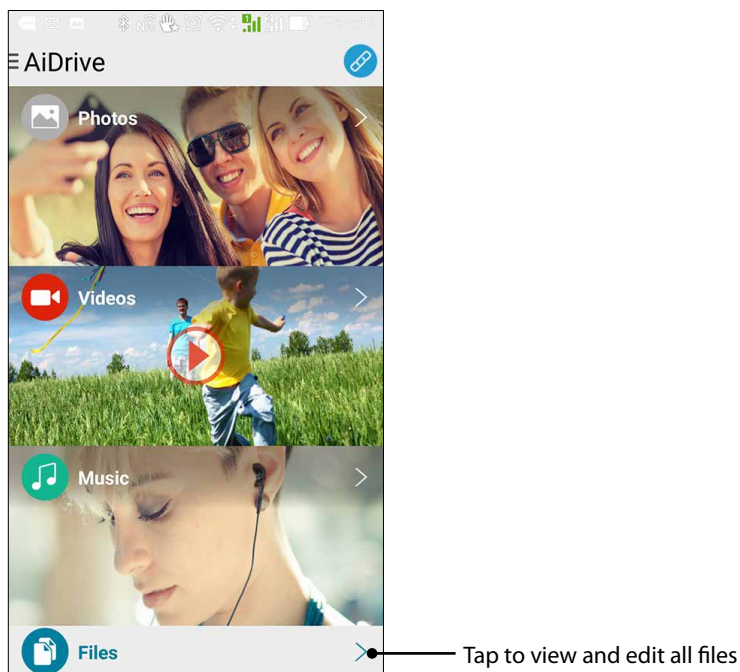
NOTE: For details on granting access to guest users, refer to the section **Setting up the admin/guest password**.

IMPORTANT!

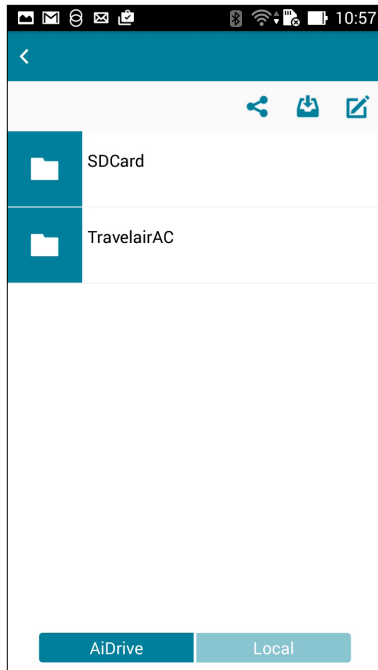
- For your guest users to access your shared media files, ensure the following:
 - AiDrive app is installed on the guest users' mobile devices.
 - The guest users' mobile devices are connected to your Travelair AC. For details, refer to the section **Connecting your mobile device**.
 - Sync up to (5) iOS devices with an Apple ID containing purchased and copyrighted contents. Copying or adding unauthorized songs to iOS mobile devices are prohibited
-


To share files to guest users:

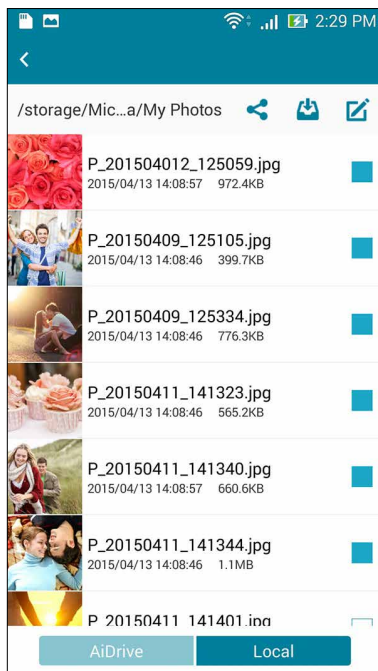
1. On the AiDrive home screen, tap **Files**.




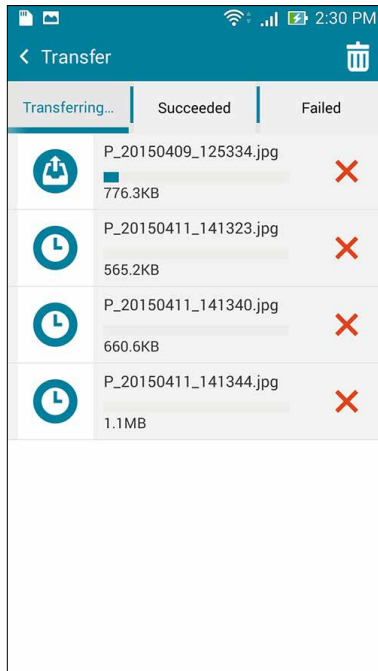
- To select files from the internal directory of your Travelair AC, tap **AiDrive** > **HDD**. To select files from your SD or microSD card, tap **Local** then tap **SD Card** or **microSD**.



- Select the photos you want to share, then tap  > **Copy**.



4. Tap **AiDrive** > **HDD** > **Share**, select the share folder, then tap  > **Paste**. Wait for a while until the file transfer process is completed.

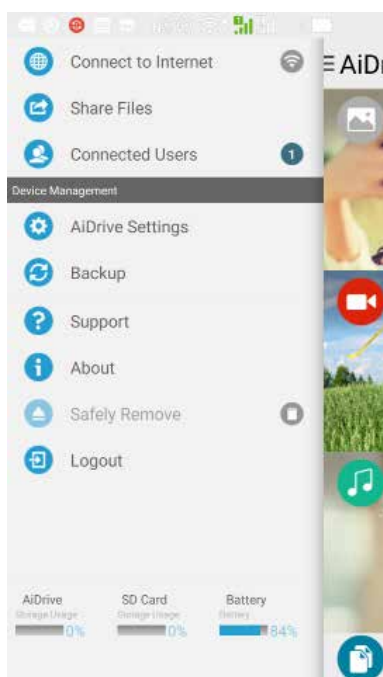


Accessing shared files

Authorized users can access shared files from Travelair AC on their mobile devices.

To access shared files:

1. Launch and log into the ASUS AiDrive app.
2. On the AiDrive home screen, swipe from the left to display the app menu.
3. Tap **Share Files** to view and access the shared files.




Sharing files via Facebook or email

You can share your media files from your Travelair AC or mobile device to Facebook or an email account.

NOTE: Ensure that your device has Internet connection. For details, refer to the section **Connecting to the Internet**.

Sharing files from your Travelair AC to Facebook or email

To share files from your Travelair AC to Facebook or email:

1. On the AiDrive home screen, tap **Files**.
2. To select files from your Travelair AC, tap **AiDrive > Travelair AC**.
3. Tap any of these folders to select files for sharing: **Documents, Music, Pictures, and Videos**.
4. From your list of files, tap to select the file.
5. Tap  to share your file via **Facebook, Photos, or Email**.

NOTE: When you select **Photos** as the share option for your file, the file is saved to the Gallery on your mobile device.




Swipe to the left or to the right to go the previous or next photo.

Tap to share the file

Sharing files from your mobile device to Facebook or email

NOTE: Ensure that Facebook or email app is installed on your mobile device.

To share files from your mobile device to Facebook or email:

1. On the AiDrive home screen, tap **Files**.
2. To select files from your mobile device, tap **AiDrive > Local**.
3. Tap **SD Card** to select a file from the internal storage space of your mobile device. Tap **MicroSD card** to select a file from your external storage card.
4. Browse and locate the file that you want to share.
5. Tap  to share your file via **Facebook, Photos, or Email**.

NOTE: When you select **Photos** as the share option for your file, the file is saved to the Gallery on your mobile device.



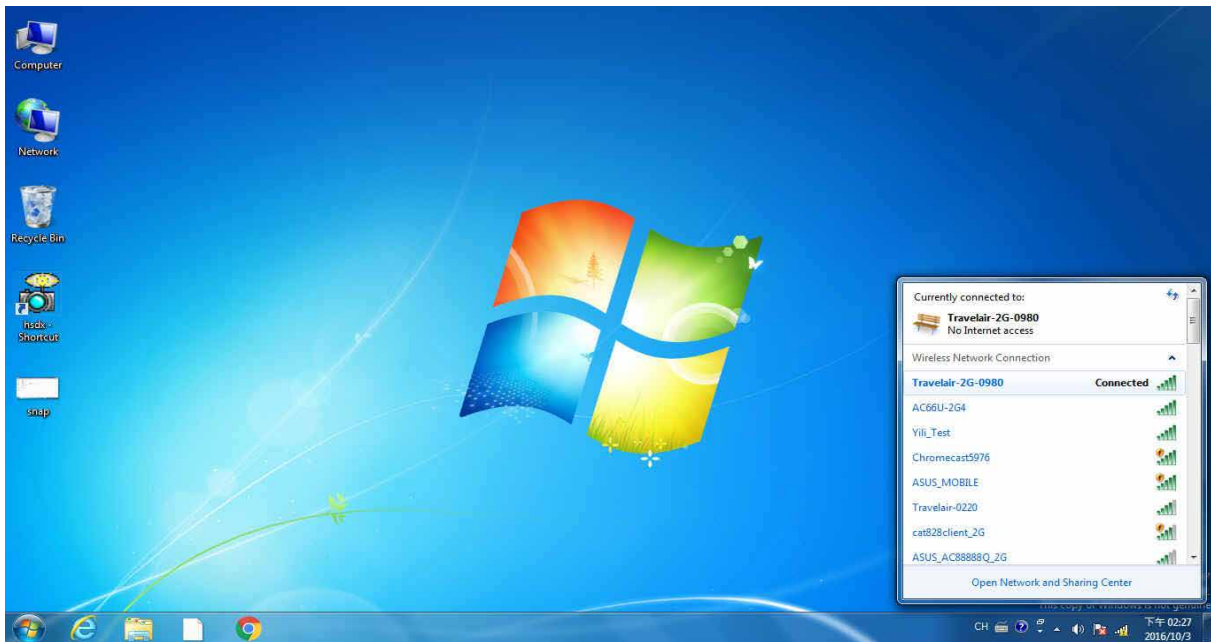
Swipe to the left or to the right to go the previous or next photo.

Tap to share the file

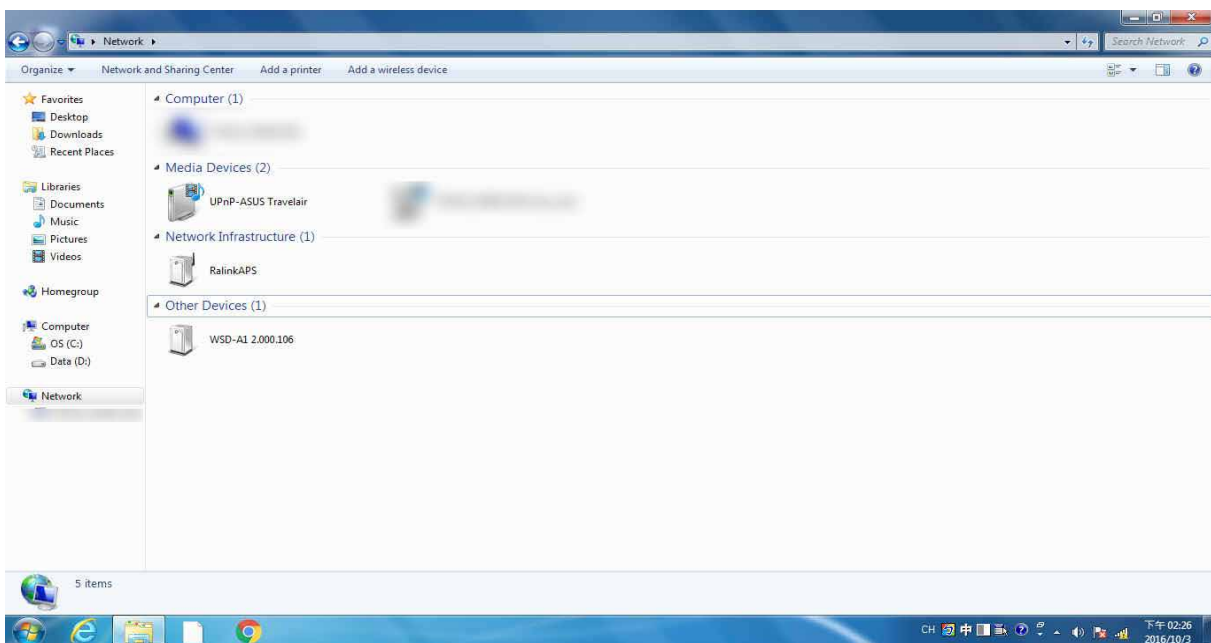
Connecting to your Windows® PC wirelessly

To connect to your Windows® PC wirelessly:

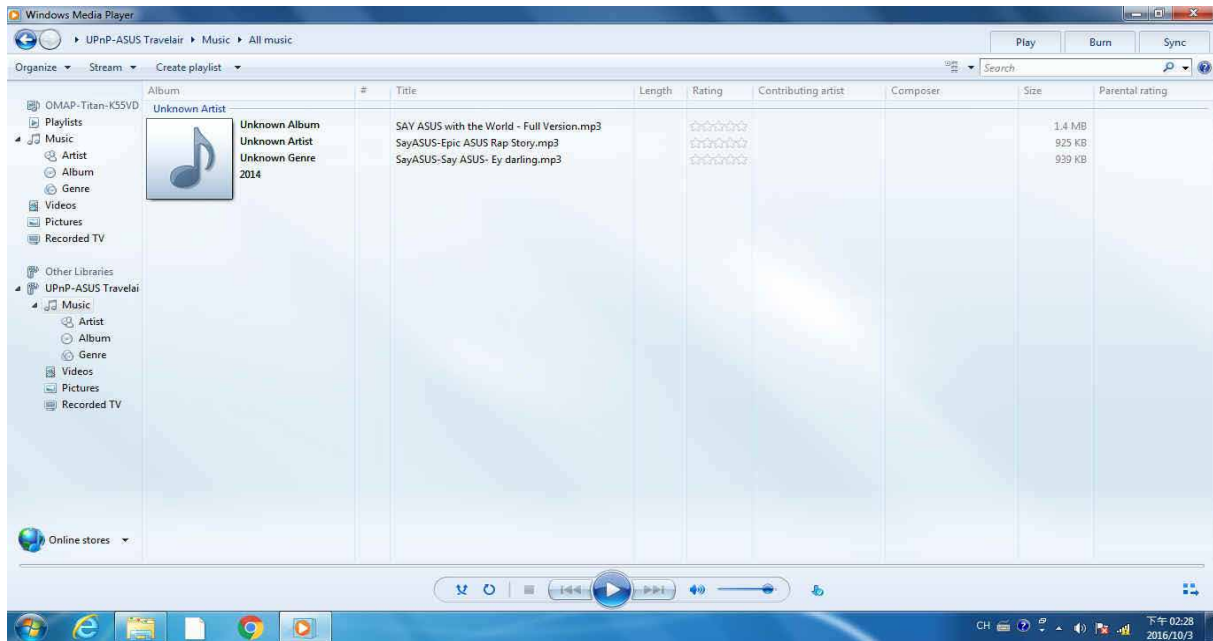
1. Turn on your Travelair AC.
2. On your Windows® PC, connect to your Travelair AC via Wi-Fi.



3. You can access your Travelair AC via the UPnP or Samba server from **Computer > Network**.



4. From the Network list, double-click on your Travelair AC network and Windows® Media Player is launched automatically.
5. You can now start to access the contents of your Travelair AC on your computer.

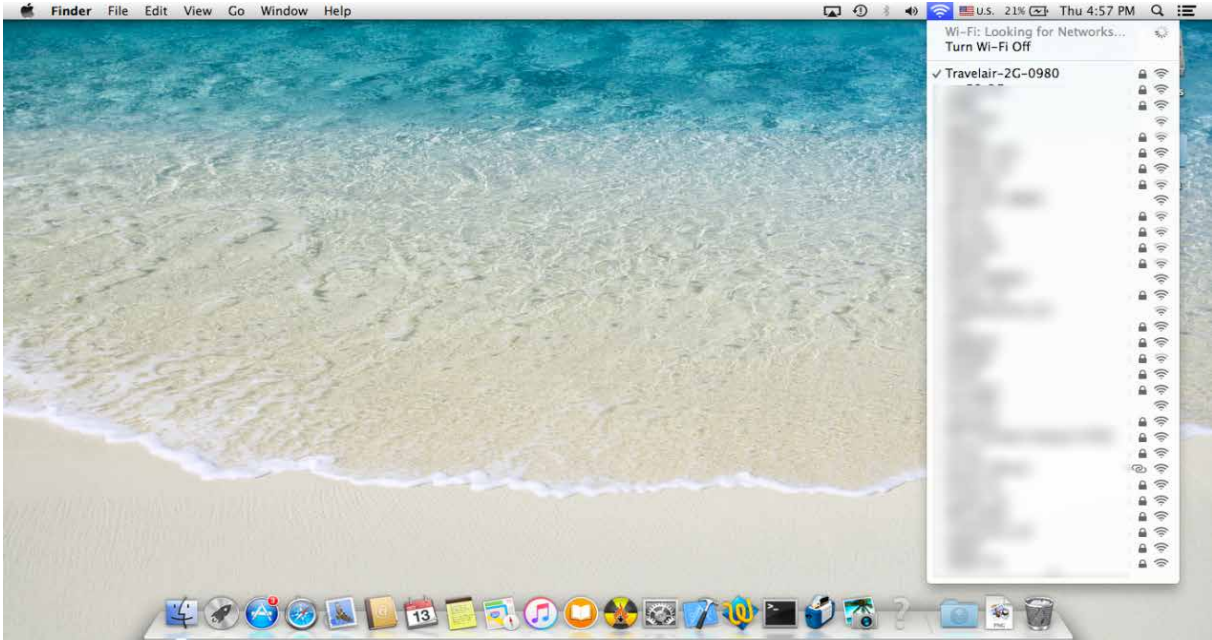


IMPORTANT! Due to the UPnP server limitation, you can only access the UPnP-readable files.

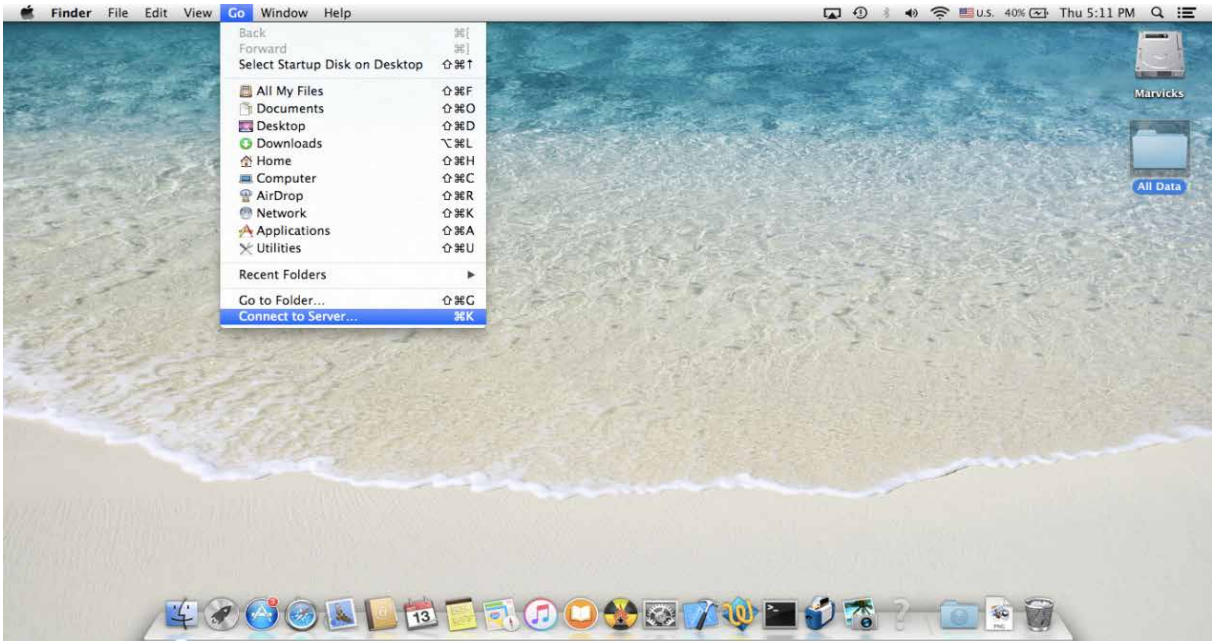
Connecting to your Mac PC wirelessly

To connect to your Mac PC wirelessly:

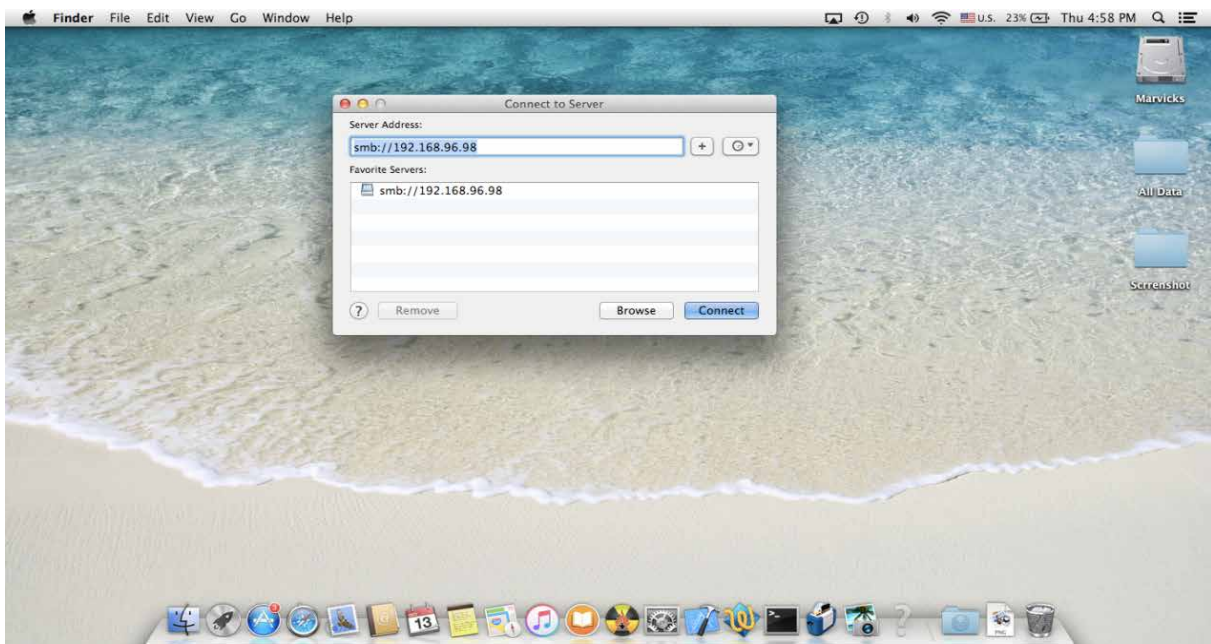
- 1. On your Mac PC, connect to your Travelair AC via Wi-Fi.



- 2. From the Finder menu, click **Go > Connect to Server...**



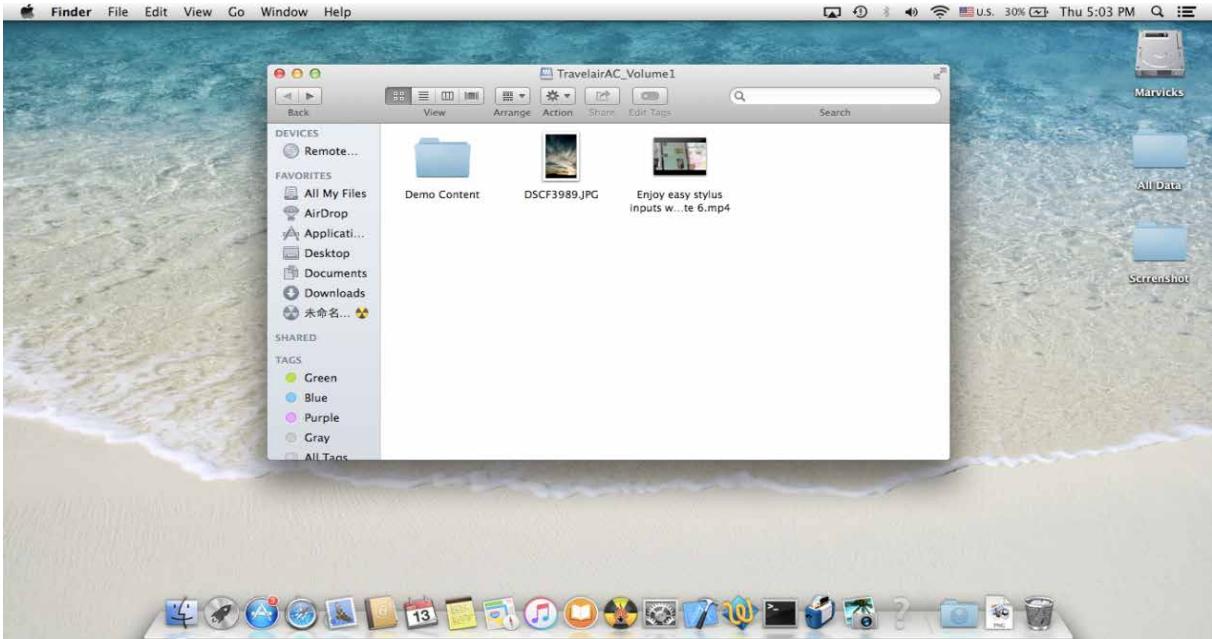
3. Enter this IP address of your Travelair AC: smb://192.168.96.98.



4. When prompted, enter your account name and password.



5. You can now start accessing the contents of your Travelair AC on your Mac PC.



Frequently Asked Questions (FAQs)

Q1: How do I connect my mobile device to my Travelair AC?

- You can connect your mobile device to SSID or network name **Travelair-XXXX** to connect to your Travelair AC. For more details, refer to the section **Connecting your mobile device**.
- You can automatically connect your NFC-enabled device to your Travelair AC. For more details, refer to the section **Connecting via NFC One Touch**.

IMPORTANT! Your NFC-enabled mobile device must run on Android 4.0 or later version.

Q2: I still cannot connect my mobile device to my Travelair AC.

- Ensure that your Travelair AC is turned on and its Wi-Fi LED is solid blue, which indicates that the Wi-Fi function is enabled.
- Ensure that you have connected your mobile device to your Travelair AC network (**Travelair-XXXX**) and that you are within the Wi-Fi range of your Travelair AC.
- The maximum of five (5) devices may already have connected to your Travelair AC. Try connecting your mobile device to your Travelair AC at a later time.
- Restart your Travelair AC and try connecting your mobile device to it again. If you are still unable to connect, try resetting your Travelair AC. For more details on resetting your Travelair AC, refer to the question in **Q9**.

Q3: Can I use my Travelair AC device SD card reader as a regular PC SD card reader?

Yes, you can use your Travelair AC SD card reader as a regular PC SD card reader.

Q4: Do I need to install the ASUS AiDrive app on my mobile device to access my Travelair AC?

Yes, you need to install the ASUS AiDrive app on your mobile device. ASUS AiDrive app lets you connect to your Travelair AC on your mobile device running on Android, iOS, or Amazon Kindle platform.

Q5: Can I use my Travelair AC as a standard portable hard drive?

Yes, you can use your Travelair AC as a standard portable hard drive. Ensure that your Travelair AC Wi-Fi function is turned off before connecting it to your computer's USB port.

IMPORTANT! When your Travelair AC is connected to your computer's USB port, contents on your Travelair AC cannot be accessed wirelessly.

Q6: How do I update the firmware of my Travelair AC?

1. On your computer, download the latest firmware version from the ASUS Support site at www.asus.com/support
2. Using the bundled USB cable, connect your Travelair AC to your computer's USB port.
3. Copy the downloaded firmware file to the root directory of your Travelair AC.
4. Safely remove your Travelair AC from your computer.
5. Plug your Travelair AC to a power outlet.

6. Turn on your Travelair AC. The system automatically detects the latest firmware file, and ASUS AiDrive app prompts for confirmation on proceeding with the update.
7. Confirm the update, and wait until the update process is completed. Your Travelair AC automatically restarts after the update process.

NOTE: DO NOT turn off your Travelair AC during the update process.

Q7: The firmware update process failed.

1. Ensure that the firmware file is placed in the root directory of your Travelair AC, and your Travelair AC is plugged to a power outlet.
2. Try updating the firmware again.

Q8: Is the battery of my Travelair AC replaceable?

No, the battery is not replaceable. Your Travelair AC contains a non-replaceable Lithium-ion battery.

Q9: How do I reset my Travelair AC?

1. Locate the reset button at the bottom of your Travelair AC.
2. Using a paperclip and with your Travelair AC turned on, press the reset button for about ten (10) seconds until it automatically restarts.

Q10: Will be my files be deleted when I reset my Travelair AC?

No, your files will not be deleted. Your Travelair AC device only restores the system to the default settings and does not delete any data on your Travelair AC.

Q11: How long does it take to fully charge my Travelair AC?

- When charging via a power outlet and your Travelair AC is turned off, it takes about four (4) hours to fully charge your Travelair AC.
- When charging your Travelair AC while it is in use, the charging time depends on the system load.

Q12: I cannot connect my mobile device to my Travelair AC after the firmware update.

- On your mobile device, search for and connect to the network **Travelair-XXXX**.
- If you have previously assigned a unique network name for your Travelair AC, try connecting to that network name on your mobile device.

Q13: How can I get the best wireless connection between my Travelair AC and mobile device?

To get the best wireless connection, ensure that you are near your Travelair AC when you are wirelessly accessing files on it from your mobile device.

Q14: Will the bandwidth decrease when multiple users are connected to the Travelair AC?

Yes, the bandwidth decreases when multiple users are accessing your Travelair AC.

Q15: I cannot play music/video or view pictures/documents via the ASUS AiDrive app.

- Ensure that ASUS AiDrive or your mobile device supports the file format.
- When the file format is not supported, install a third-party media player app on your mobile device to open the file.

Q16: Can I edit files on my mobile device via the ASUS AiDrive app?

No, you cannot edit files via the ASUS AiDrive app. ASUS AiDrive only provides file management functions such as viewing, uploading, downloading, copying, and deleting files and folders. You can use third-party apps to edit files on your mobile device.

Q17: My Travelair AC is not accessible wirelessly when it is connected to my computer's USB port.

- When connected to your computer's USB port via the USB cable, your Travelair AC stops transmitting Wi-Fi signals and cannot be accessed wirelessly.
- To access your Travelair AC wirelessly, disconnect it from your computer and turn the power on. Ensure that the Wi-Fi LED on your Travelair AC is solid blue, indicating that the Wi-Fi function is enabled.

Q18: During charging my Travelair AC, can mobile devices still wirelessly connect to it?

During charging via a power outlet, ensure that your Travelair AC is turned on to ensure that mobile devices can wirelessly access it.

Q19: Can I use special characters for the wireless network name (SSID) of my Travelair AC?

Use only alphanumeric characters and spaces to manually change the network name (SSID) of your Travelair AC.

Q20: Can I change the wireless network password of my Travelair AC?

You can manually change the Wi-Fi password of your Travelair AC. Use alphanumeric characters for your network password.

Free Manuals Download Website

<http://myh66.com>

<http://usermanuals.us>

<http://www.somanuals.com>

<http://www.4manuals.cc>

<http://www.manual-lib.com>

<http://www.404manual.com>

<http://www.luxmanual.com>

<http://aubethermostatmanual.com>

Golf course search by state

<http://golfingnear.com>

Email search by domain

<http://emailbydomain.com>

Auto manuals search

<http://auto.somanuals.com>

TV manuals search

<http://tv.somanuals.com>