

D-Link®



Quick Install Guide

DAP-3525 **AirPremier® N**
Dual Band Exterior PoE Access Point

powered by
CloudCommand™



Business Class Networking

System Requirements

Important: Before connecting, you must register your Access Point online.

To properly configure your Access Point, you need:

- Internet connectivity
- Computer with a Windows®, Macintosh®, or Linux-based operating system
- Browser with Firefox 3.6, Chrome 5.0, Safari 4.0, Internet Explorer 8.0, or later versions
- Note: your Access Point includes a one-year subscription to the CloudCommand™ online service. After one year, the service requires an annual subscription.

Package Contents

If any of following items are missing, please contact your reseller:

- D-Link DAP-3525
- Power Adapter
- 4m Ethernet Cable
- Grounding Wire
- Mounting Plate
- Power Cord
- PoE Base
- Mounting Screws

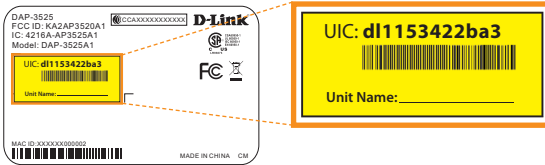


- 1 Ethernet Port**
Connects DAP-3525 to the network via Ethernet cable.
- 2 Reset Button**
Resets the Access Point to factory defaults.
- 3 Power LED**
A solid green light indicates a proper connection to the power supply. This LED will blink red during boot up.
- 4 LAN LED**
A solid green light indicates the Ethernet connection is good. The light will blink during data transmission.
- 5 WLAN LED**
A blinking green light indicates the wireless function is working. The light will blink fast during data transmission.

Welcome to D-Link's line of cloud-managed wireless Access Points. Leverage the product's online interface to configure, deploy, secure and manage your entire wireless network.

Registering Your Access Point Online

Step 1: Before you can use the Access Point, you must register it online. Locate the Unit Identification Code (UIC) on the yellow label placed on the underside of your Access Point.



Product Label

Step 2: Go to <http://dlink.cloudcommand.com> on a compatible browser (Firefox 3.6, Chrome 5.0, Safari 4.0, Internet Explorer 8.0, or later versions).

Step 3 : Choose the appropriate registration scenario.

New Customer: If you don't have an existing CloudCommand™ account, create one by following the instructions in our simple step-by-step wizard. The wizard will guide you through the initial setup of your entire wireless network.

Existing Customer: If you already have a CloudCommand™ account, please log in. In the left menu bar on your dashboard, click "New Access Point" and follow the instructions.



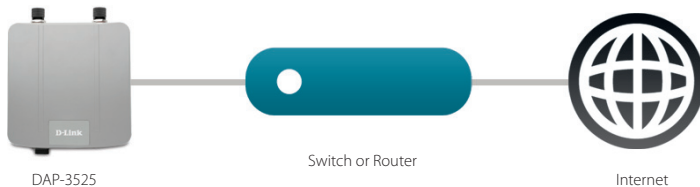
CloudCommand™ Dashboard

Option 1: Deploying Your Access Point **with** Dynamic IP Addressing

If your network **automatically assigns IP addresses** (DHCP service), connect the Access Point directly to the network by plugging an Ethernet cable into the LAN port on its rear panel. Insert the cable's other end into your existing switch or router with Internet connectivity.

No additional configuration is required. Within a few minutes the Access Point will self configure and become ready to use. You have the option of later reconfiguring your Access Point to a static IP address using the CloudCommand™ interface.

The DAP-3525 is PoE (Power over Ethernet) compliant. You can power it either by using a PoE switch or the included power adapter. Once powered, the green power LED will turn ON to indicate proper operation.



Option 2:

Deploying Your Access Point **without** Dynamic IP Addressing

If your network **does not automatically assign IP addresses** (No DHCP service), follow these steps to properly configure your Access Point:

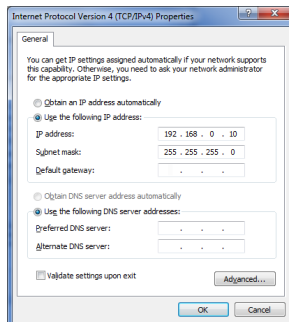
Configure APs

Step 1: Connect the Access Point directly to your computer using an Ethernet cable.



Step 2: Configure the Ethernet connection of your computer as follows:

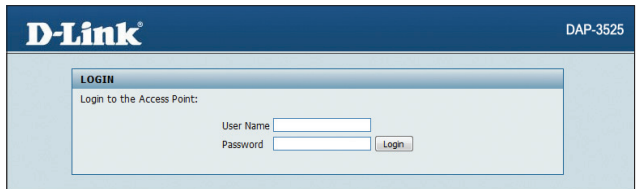
- **Windows® 7** - Click on Start > Control Panel > Network and Internet > Network and Sharing Center > Change Adapter Setting.
Windows Vista® - Click on Start > Control Panel > Network and Internet > Network and Sharing Center > Manage Network Connections.
Windows® XP - Click on Start > Control Panel > Network Connections.
Windows® 2000 - Right-click My Network Places > Properties.
- Right-click on the Local Area Connection which represents your network adapter and select **Properties**. Highlight **Internet Protocol (TCP/IP)** and click **Properties**.
- Click **Use the following IP address** and enter an IP address that is on the same subnet as your network or the LAN IP address on your new DAP-3525.
- Click **OK** twice to save your settings.



Step 3: Launch a web browser and type either the IP address of the access point (default - 192.168.0.50) or the default device name of the access point (http://dlinkapxxxx where xxxx are the last 4 numbers of the MAC address). The MAC Address is on the lower-left corner of the device label (highlighted below).

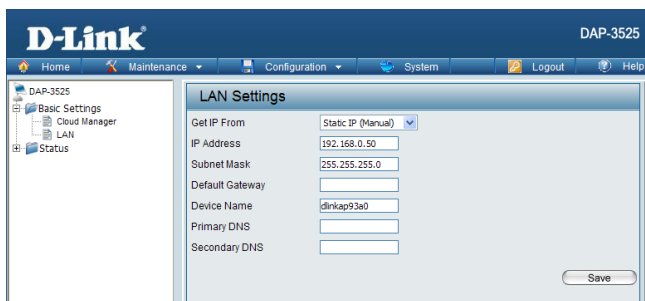


Step 4: Once you enter the IP address or device name, the login screen will appear.



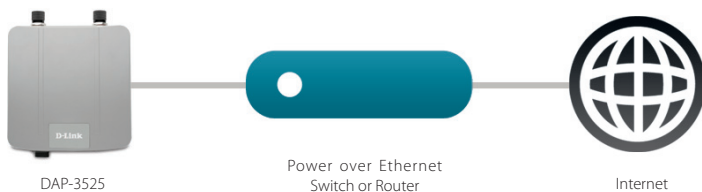
- Type "**admin**" in the User Name field.
- Leave the Password field **blank**.
- Click the **Login** button.

Step 5: Once logged in, you will be able to change the Access Point's IP address and DNS information to match your existing network configuration.



Step 6: No additional configuration is required. Within a few minutes the Access Point will self configure and become ready to use. You have the option of later reconfiguring your Access Point to a new static IP address using the CloudCommand™ interface.

The DAP-3525 is PoE (Power over Ethernet) compliant. You can power it either by using a PoE switch or the included power adapter. Once powered, the green power LED will turn ON to indicate proper operation.



Step 7: Restore setting change in Step 2.

CloudCommand™ Dashboard

To view your CloudCommand™ dashboard, please log in at <http://dlink.cloudcommand.com>. The dashboard is your starting point to monitor network activity, troubleshoot problems, authorize and disconnect individual devices, or make configuration changes to your Access Point(s).



- 1 Manage Access Points and connected devices
- 2 View alerts and events, and set up alert notifications
- 3 Display detailed activity reports for users and Access Points
- 4 Change configurations, Wi-Fi network names, security, and passwords
- 5 View activity graphs
- 6 View devices connected to your guest network
- 7 View devices connected to your primary wireless network
- 8 View Access Points in your Connected network
- 9 Read FAQs
- 10 Register new Access Points
- 11 Authorize a new device to connect to your wireless network
- 12 Monitor alerts in real time

Installation / Mounting

This product should ONLY be installed by an experienced installer who is familiar with local building and safety codes and where ever applicable, is licensed by the appropriate authorities. Failure to do so may void the D-Link product warranty and may expose the end user or the service provider to legal and financial liabilities. D-Link and its resellers or distributors are not liable for injury, damage, or violation of regulations associated with the installation of outdoor units or antennas.

A safety grounding system is necessary to protect your outdoor installation from lightning strikes and the build-up of static electricity. The grounding system must comply with the National Electrical Code and safety standards that apply in your country. Always check with a qualified electrician if you are in doubt as to whether your outdoor installation is properly grounded.

Note: *DAP-3525 is certified to IP65 which means the device is protected from dust and low pressure jets of water from all directions - limited ingress permitted. It is recommended to place this device under a roof.*

Connect the Ethernet Cable

Step 1: Connect the supplied Ethernet cable with the waterproof enclosure to the Ethernet port on the DAP-3525.



Step 2: After plugging the Ethernet cable in the port, tighten the waterproof enclosure.

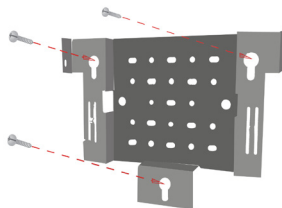
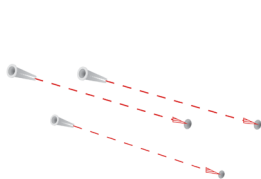


Step 3: Attach the grounding cable and tighten the screw.



Attach the Mounting Plate

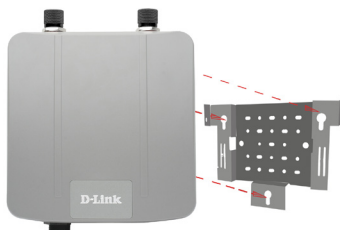
Step 1: Insert provided wall anchors in the wall where the mounting plate will be attached. Use the provided screws to secure the mounting plate on the wall.



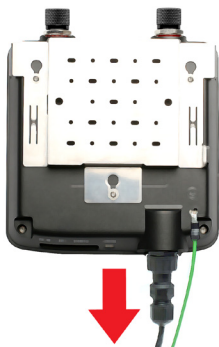
Step 2: Attach the remaining screws securely to the back of the DAP-3525.



Step 3: Attach the DAP-3525 to the mounting plate.



Step 4: Slide the DAP-3525 down into the grooves on the mounting plate to secure it to the plate.



Technical Support

D-Link's website contains the latest user documentation and software updates for D-Link products.

U.S. and Canadian customers can contact D-Link Technical Support through our website or by phone.

United States

Telephone
877.354.6555

World Wide Web

<http://support.dlink.com>

Canada

Telephone
877.354.6560

World Wide Web

<http://support.dlink.ca>

D-Link®

Version 1.0
February 9, 2011

Copyright ©2011 D-Link Corporation/D-Link Systems, Inc. All rights reserved. D-Link and the D-Link logo are registered trademarks of D-Link Corporation or its subsidiaries in the United States and other countries. CloudCommand™ is a trademark of PowerCloud™ Systems, Inc. All rights reserved. Other trademarks are the property of their respective owners. Product specifications, size and shape are subject to change without notice, and actual product appearance may differ from that depicted herein.

This device complies with Part 15 of the FCC Rules. Operation is subject to the following two conditions:

- (1) This device may not cause harmful interference, and
- (2) This device must accept any interference received, including interference that may cause undesired operation.

Free Manuals Download Website

<http://myh66.com>

<http://usermanuals.us>

<http://www.somanuals.com>

<http://www.4manuals.cc>

<http://www.manual-lib.com>

<http://www.404manual.com>

<http://www.luxmanual.com>

<http://aubethermostatmanual.com>

Golf course search by state

<http://golfingnear.com>

Email search by domain

<http://emailbydomain.com>

Auto manuals search

<http://auto.somanuals.com>

TV manuals search

<http://tv.somanuals.com>