

Installation Instructions

FOR JACKSON MODEL:

M24STD-6



August 7, 2006
P/N 07610-003-26-13 Rev. A

Jackson MSC, INC.
P.O. BOX 1060
HWY. 25E
BARBOURVILLE, KY. 40906
FAX (606) 523-9196
PHONE (606) 523-9795
www.jacksonmsc.com

M24STD-6 INSTALLATION INSTRUCTIONS

Tools Required:

- Standard Allen wrench set
- Tube of food-grade silicon
- Silicon gun
- Rag

Time Requirements:

It is expected that it will take 30 minutes to install the M24STD-6 dishmachine stand.

Notes:

- Ensure that the dishmachine stand is level prior to placing the dishmachine on the stand.
- Never attempt to lift a dishwasher on your own. Always use other personnel to help or the appropriate lifting devices to prevent accident and injury.

Steps:

- Inspect the assembly to ensure that there has been no freight damage. If there is any damage, contact the freight carrier immediately.
- Your package should contain the following:
 - Stand platform weldment
 - (4) legs
 - Instructions
- If any of these items are missing, immediately contact Jackson Technical Service at 1-888-800-5672.
- Remove the items from the box.
- Ensure that the set screws are located within the leg sockets. If they are missing, immediately contact Jackson Technical Service (See Figure 1).
- Verify that the foot of each leg can be turned; this is how the stand will be adjusted in order to level it. Please note that when assembled, there should be a minimum of 6" (152.4mm) of space between the bottom of the stand and the finished floor.

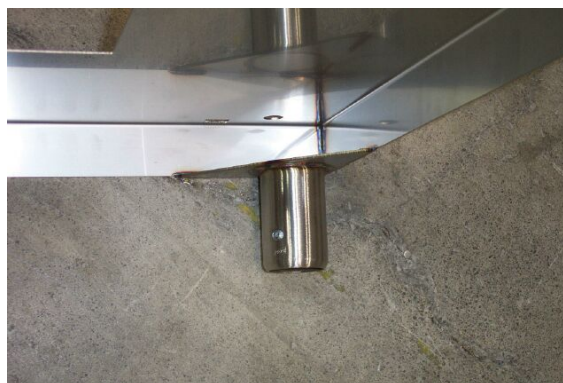


Figure 1—Leg socket showing set screw

- Place the legs fully into the leg sockets of the platform and tighten down the set screws to secure them in place. (See Figure 2).
- Once all of the legs are tightly in place,



Figure 2—Tightening the legs

flip the dishmachine stand over and set it down on all four legs. Ensure that the legs are stable.

- If stable, take a small amount of silicon and apply it to the set screw to cover any exposed threads and to fill in the hole for the Allen wrench. (See Figure 3). Note: do not use excessive amounts of silicon; only enough to complete the task.



Figure 3—Applying silicon

- To mount the undercounter dishwasher, remove the feet from the frame bottom by unscrewing them.
- Set the unit on top of the stand (minus the feet) on the platform, lining up the holes in the frame to the corresponding holes in the platform.
- Secure the unit to the platform by reinserting and tightening the feet.
- Verify that the unit is level prior to making any utility connections. If the unit is not level, it may operate inefficiently.

After Maintenance Actions:

- Wipe down the stand to remove any excess silicon.
- Once the dishwasher is fully hooked up and operational (per the manufacturer's instructions), operate the machine and observe it to ensure that there is no excessive vibration or any other source of concern.

Preventative Maintenance:

- Keep the area under the platform free of dirt, soil and debris.
- Clean the stand regularly with a wet towel to prevent the build-up of residue and soil.

Free Manuals Download Website

<http://myh66.com>

<http://usermanuals.us>

<http://www.somanuals.com>

<http://www.4manuals.cc>

<http://www.manual-lib.com>

<http://www.404manual.com>

<http://www.luxmanual.com>

<http://aubethermostatmanual.com>

Golf course search by state

<http://golfingnear.com>

Email search by domain

<http://emailbydomain.com>

Auto manuals search

<http://auto.somanuals.com>

TV manuals search

<http://tv.somanuals.com>