



Bathing has never been like this before. Incorporating exotic woods, acrylic and state-of-the art bathing technologies, the Fuzion™ combines everything you need to create your ideal spa experience.

WHIRLPOOL BATH FEATURES:

- Multi-speed motor
- 4 fully adjustable TheraPro® jets
- 11 directionally adjustable AccuPro™ jets
- 256 color Chromatherapy lighting system
- Water level sensor
- Sculpted armrest and contoured backrest with pillows
- All-in-one electronic control panel
- Infinity-edge drain system
- RapidHeat™ inline heater
- Undermount or choose Wenge or Teak wooden deck
- ProO₃™ Ozone Sanitation System standard

**Fuzion™ 7260
WHIRLPOOL BATH,
DUAL MOTOR with
CHROMATHERAPY**

MODEL NUMBER:
EG65 (Wenge)
EG60 (Teak)

EXTERIOR DIMENSIONS:
72" long x 60" wide x
22¾" high

OF JETS/TYPE OF JETS:
4 TheraPro™ Jets
11 AccuPro™ Jets

OPERATING GALLONS:
129 gallons

**Fuzion™ 7260
WHIRLPOOL BATH,
DUAL MOTOR with
ILLUMATHERAPY™**

MODEL NUMBER:
EG80 (Wenge)
EG75 (Teak)

EXTERIOR DIMENSIONS:
72" long x 60" wide x
22¾" high

OF JETS/TYPE OF JETS:
4 TheraPro™ Jets
11 AccuPro™ Jets

OPERATING GALLONS:
129 gallons





Fuzion™ 7260 WHIRLPOOL BATH, DUAL with CHROMATHERAPY

EG65	Fuzion™ 7260 Whirlpool Bath Dual, Wenge
EG60	Fuzion™ 7260 Whirlpool Bath Dual, Teak

Fuzion™ 7260 WHIRLPOOL BATH, DUAL with ILLUMATHERAPY™

EG80	Fuzion™ 7260 Whirlpool Bath Dual, Wenge
EG75	Fuzion™ 7260 Whirlpool Bath Dual, Teak

- Right Hand Drain Location
- Overflow fitting comes with tub
- Accessories / Hardware:
 - HTC Jet Trim Kit: #D095
 - Oval Trim Kit: #N557
 - BMH 2 Jet trim Kit: # J869 (6 kits required)
- Trim Kit Finishes Available:
 - (827) – Chrome
 - (898) – Brushed Chrome
 - (815) – Satin Nickel
 - (829) – Bright Brass
 - (805) – Platinum
 - (826) – Brushed Nickel
 - (845) – Oil Rubbed Bronze

INSTALLATION NOTES

Refer to installation instructions included with fixture before beginning installation. Please confirm product availability and specifications before commencing with any installation work.

PRODUCT SPECIFICATIONS AND AVAILABILITY ARE SUBJECT TO CHANGE WITHOUT NOTICE.

Technical Specifications

DIMENSIONS

72" L x 60" W x 22³/₄" H
(1829 mm) L x (1524 mm) W x (578 mm) H

DRAIN/OVERFLOW

A: 16-3/4" (425 mm) B: 12-1/16" (306 mm)

CUTOUT

71" x 59"
(1803) mm x (1499) mm

TOTAL WEIGHT

1849 lb (839 kg) / 62 lb/ft² (301 kg/m²)

OPERATING GALLONAGE

129 U.S. Gal. (488 Liters)

PRODUCT WEIGHT

319 lb (145 kg)

SKIRT MOUNTING

Not Available

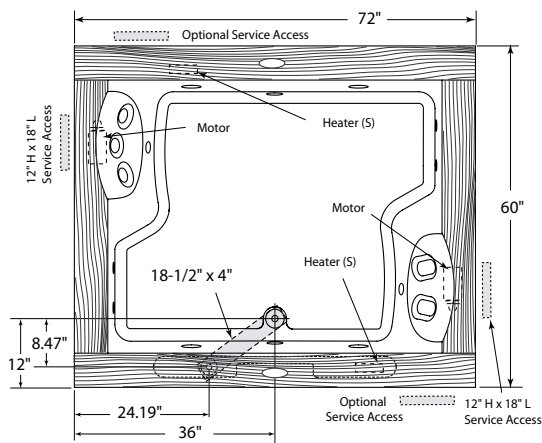
ELECTRICAL SPECIFICATIONS

Requires dedicated GFCI protected separate circuits.

1st Motor/Pump and RapidHeat™: 240VAC, 20AMP, 60 Hz.
2nd Motor/Pump and RapidHeat™: 240VAC, 20AMP, 60 Hz.

HEATER (STANDARD)

RapidHeat™: P/N BN60000



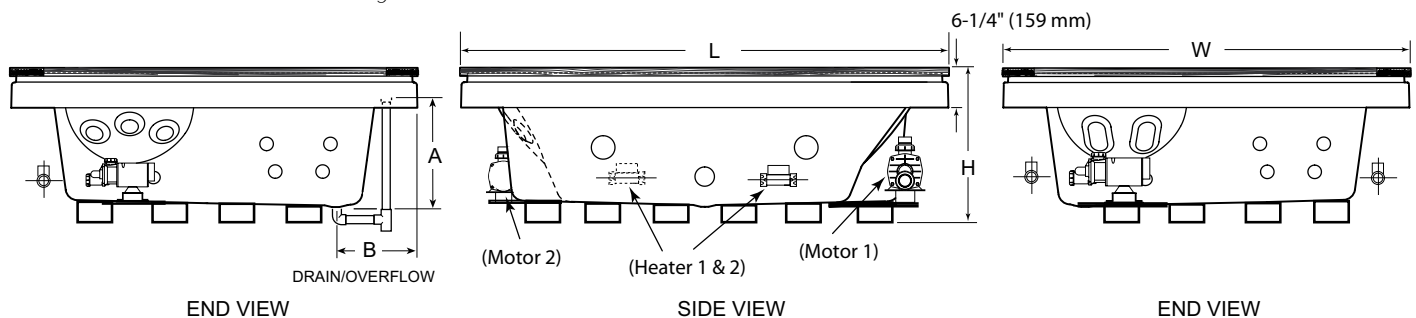
Product Shown: Fuzion™ 7260 Whirlpool Bath Wenge with Illumatherapy – Dual Motor Model: EG80

* Measurements inside unit represent cutout in floor to allow for drain/overflow.

Minimum Service Access dimensions given.

Faucet Installation Note:

Selecting a faucet for rim mounting: The combined thickness at the rim of the tub shell and the wood trim is 2" (50,8 mm) nominal. The length of the faucet tailpiece(s) must be long enough to extend past this dimension and have ample clearance to assemble any hardware (i.e. locknut, water supply fittings, etc.) necessary for installation.



Free Manuals Download Website

<http://myh66.com>

<http://usermanuals.us>

<http://www.somanuals.com>

<http://www.4manuals.cc>

<http://www.manual-lib.com>

<http://www.404manual.com>

<http://www.luxmanual.com>

<http://aubethermostatmanual.com>

Golf course search by state

<http://golfingnear.com>

Email search by domain

<http://emailbydomain.com>

Auto manuals search

<http://auto.somanuals.com>

TV manuals search

<http://tv.somanuals.com>