

# INSTALLATION INSTRUCTIONS

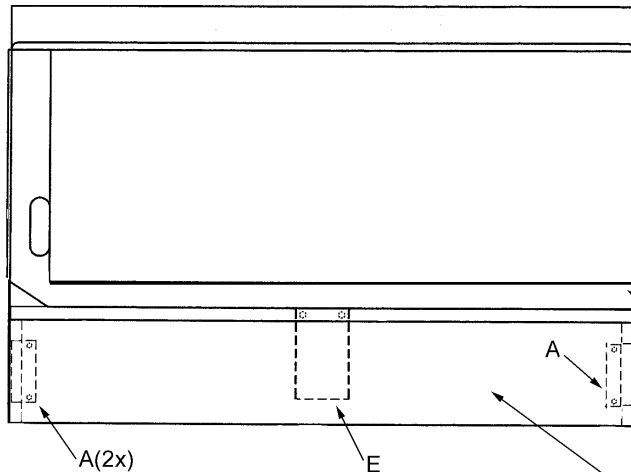
Part No. 055523

www.keatingofchicago.com

**KEATING**  
OF CHICAGO, INC.®

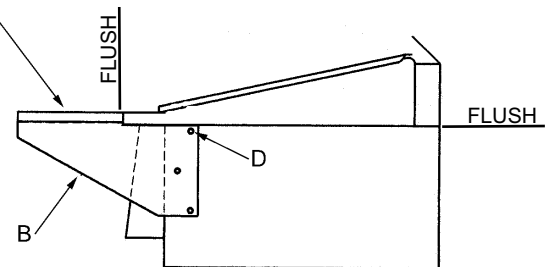
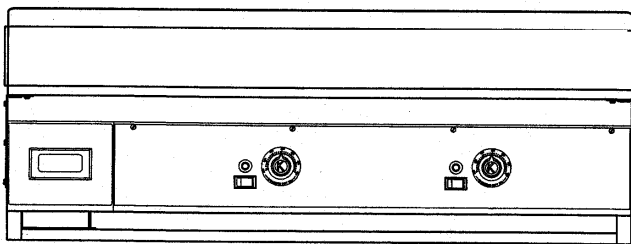
1-800-KEATING

## INSTALLATION FOR CUTTING BOARD WITH BRACKETS ON KEATING GRIDDLES



### What's needed to complete this installation?

- Drill Gun
- #19 Drill Bit
- Phillips Screw Driver



### What's included in your package?

- A** PRE-ASSEMBLED MOUNTING BRACKET FOR SECURING CUTTING BOARD TO SIDE BRACKET (2x)
- B** END SUPPORT BRACKET (2x)
- C** RICHLITE CUTTING BOARD (1x)
- D** #10 SCREWS FOR ATTACHING BRACKET TO CABINET (6x)
- E** CUTTING BOARD CENTER SUPPORT FOR 48" AND LARGER GRIDDLES (1x)

- 1) HOLD END SUPPORT BRACKETS IN PLACE AND MARK 3 HOLES ON EACH SIDE OF CABINET. TOP EDGE OF BRACKET IS TO BE FLUSH WITH UPPER EDGE OF CABINET SIDE. 90° FORM ON THE BRACKET WILL EXTEND OUT FROM THE PERIMETER FRONT.
- 2) DRILL THREE HOLES ON EACH CABINET SIDE WITH THE #19 DRILL BIT.
- 3) ATTACH END SUPPORT BRACKETS WITH #10 SHEET METAL SCREWS PROVIDED.
- 4) SLIDE CUTTING BOARD IN PLACE. EXISTING BRACKETS ON CUTTING BOARD SHOULD MATE WITH FORMED EDGES ON END SUPPORT BRACKETS.
- 5) CUTTING BOARDS 48" AND LONGER ALSO HAVE A CENTER SUPPORT WHICH ATTACHES ON THE BOTTOM SIDE OF THE PERIMETER FRONT (UNDER THE "CAUTION HOT" WARNING LABEL) WITH EXISTING 1/4-20 SCREWS.

## Free Manuals Download Website

<http://myh66.com>

<http://usermanuals.us>

<http://www.somanuals.com>

<http://www.4manuals.cc>

<http://www.manual-lib.com>

<http://www.404manual.com>

<http://www.luxmanual.com>

<http://aubethermostatmanual.com>

Golf course search by state

<http://golfingnear.com>

Email search by domain

<http://emailbydomain.com>

Auto manuals search

<http://auto.somanuals.com>

TV manuals search

<http://tv.somanuals.com>