

# MultiModem® DID

## Direct Inward Dial Fax Modem



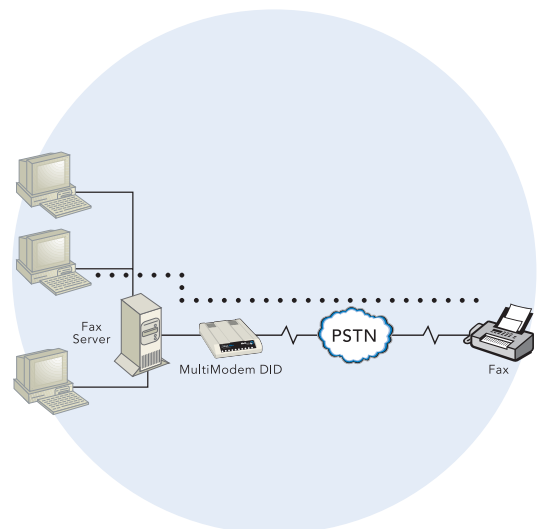
### Benefits

- Secure, convenient faxing for LAN users
- Faxes routed to the desktop
- Super G3 V.34 fax halves delivery time

Until now, utilizing high-speed computer-based fax technologies by small- to medium-sized companies has been an expensive undertaking. The MultiModem® DID fax modem combines Direct Inward Dial (DID) with Super G3 V.34 fax so that each user on the fax server can have faxes automatically routed to their computer desktop. Virtually any size enterprise can start taking advantage of the security, convenience and cost savings associated with DID fax routing.

### Features

- One Direct Inward Dial (DID) port for inbound faxing and one loop-start inbound/outbound fax port
- Super G3 V.34/33.6K fax communication
- Real time fax compression conversion
- MH, MR and MMR compression
- Error Correction Mode (ECM) provides fast and reliable fax transmissions
- T.31 Annex B Class 1.0 and T.32 Annex C Class 2.1 fax commands
- Wink-start, immediate-start, and delay dial service type support
- V.92/56K data mode
- V.44 compression improves data throughput rates
- V.42 error correction
- Flash memory for easy updates
- Small footprint and stackable design
- Ten-year warranty



## Highlights

**Direct Inward Dialing.** DID allows the use of a block of telephone numbers larger than the number of physical telephone lines for direct dialing to extensions. When combining DID with inbound fax calls to the fax server, each user on the fax server can have faxes automatically routed to the desktop. DID fax routing assigns a unique fax number for every network user or network device (such as a printer). Senders simply dial a typical telephone number (no special procedures are required). The fax server automatically delivers the incoming fax to the user over the local area network.

**Improved Efficiency and Security.** Faxes are delivered by the network fax server to the client desktop as soon as they are received. Time-wasted trips to the fax machine are eliminated and employees are more productive. In addition, DID offers a high degree of security for both the sender and the recipient.

**Enhanced Fax Features.** The MultiModem DID fax modem utilizes Super G3 V.34 fax speeds of 33.6K bps, more than double the speed of V.17/14.4K bps fax. Now, computer-based fax servers can achieve the Super G3 speeds found in dedicated fax machines. The fax modem also supports T.31 Annex B and T.32 Annex C which allows the higher V.34 speeds to operate with Class 1.0 and Class 2.1 command sets. In addition, "on-the-fly" two dimensional fax data compression plus support for Error Correction Mode (ECM) increases the performance and reliability of the MultiModem DID fax modem to levels previously only found in expensive dedicated fax boards and machines.

**Inbound and Outbound Faxing.** To implement DID fax routing you need to purchase fax server application software that supports DID routing. In addition, you need to obtain an analog DID trunk line which supports the inbound fax calls and a regular loop-start line for standard inbound/outbound fax transmission.

**Comprehensive Service and Support.** The Multi-Tech commitment to service means we provide a ten-year product warranty and service that includes free telephone technical support, 24-hour web site and ftp support.

## Specifications

### Fax

Standards: V.34, V.17, V.29, V.27ter, V.21, T.30, T.30 Annex A, T.30 Annex F, T.31, T.31 Annex B, T.32 Annex C, TR29.2 Class 2 Recommendation

Rates: 33.6K, 31.2K, 28.8K, 26.4K, 24K, 21.6K, 19.2K, 16.8K, 14.4K, 12K, 9600, 7200, 4800, 2400, 300 bps

Error Correction: ECM

Compression: MH (T.4), MR (T.4), & MMR (T.6)

Conversion: Real time (on-the-fly) compression conversion

Commands: Class 1, 2, 1.0, 2.0, 2.1

Service Types: Wink-start; immediate-start; delay dial

Signaling Types: DTMF (1-7 digits accepted)

### Data

Rates: V.92/56K, V.90/56K, enhanced V.34/33.6K & others

Error Correction: V.42 & MNP®

Data Compression: V.44, V.42bis, MNP® Class 5

### Connectors

2 RJ-11s (line jack & phone jack); RJ-12 (DID line) & DB9 (serial port)

### Physical Description

4.3" w × 1.0" h × 5.7" d; 8 oz

(10.9 cm × 2.5 cm × 14.5 cm; 227g)

### Approvals

EMC: FCC Part 15 Class B

Safety: UL, cUL, UL 60950

Telecom: FCC Part 68, CS03

## Ordering Information

Product	Description	Region
MT5634ZBA-DID	DID V.34 Fax Modem	US/Can

Made in Mounds View, MN, U.S.A.

**Trademarks / Registered Trademarks:** MultiModem, Multi-Tech, and the Multi-Tech logo: Multi-Tech Systems, Inc. / All other products and technologies are the trademarks or registered trademarks of their respective holders.

### World Headquarters

Tel: (763) 785-3500  
(800) 328-9717

[www.multitech.com](http://www.multitech.com)

### EMEA Headquarters

Multi-Tech Systems (EMEA)  
United Kingdom

Tel: +(44) 118-959 7774

Multi-Tech Systems (EMEA)  
France

Tel: +(33) 1 64 61 09 81

## Free Manuals Download Website

<http://myh66.com>

<http://usermanuals.us>

<http://www.somanuals.com>

<http://www.4manuals.cc>

<http://www.manual-lib.com>

<http://www.404manual.com>

<http://www.luxmanual.com>

<http://aubethermostatmanual.com>

Golf course search by state

<http://golfingnear.com>

Email search by domain

<http://emailbydomain.com>

Auto manuals search

<http://auto.somanuals.com>

TV manuals search

<http://tv.somanuals.com>