

REMINGTON®

protect&shine
complete ion protection dryer

Use and Care Guide



D-3510is

IMPORTANT SAFETY INSTRUCTIONS

When using electrical appliances, especially when children are present, basic safety precautions should always be followed, including the following:

READ ALL INSTRUCTIONS BEFORE USING.

KEEP AWAY FROM WATER.

DANGER

To reduce the risk of electric shock:

- Do not reach for an appliance that has fallen into water. Unplug it immediately.
- Do not use while bathing or in the shower.
- Do not place or drop into water or other liquid.
- Do not place or store this appliance where it can fall or be pulled into a tub or sink.
- Always unplug this appliance from the electrical outlet immediately after using.
- Unplug this appliance before cleaning it.

2

WARNING

To reduce the risk of burns, fire, electric shock or injury to persons:

- This appliance is for household use only.
- An appliance should never be left unattended when it's plugged in.
- Close supervision is necessary when this appliance is used by, on, or near children or invalids.
- Use this appliance only for its intended use as described in this manual. Do not use attachments not recommended by Remington.
- Keep the cord away from heated surfaces. **Do not wrap the cord around the appliance.**
- Never operate this appliance if it has a damaged cord or plug, if it is not working properly, if it has been dropped or damaged, or if it has been dropped into water.
- Never drop or insert any object into any of the appliance's openings.
- Do not use outdoors or operate where aerosol (spray) products are being used, or where oxygen is being administered.
- Always store this appliance and cord in a moisture-free area.
- Do not plug or unplug this appliance when your hands are wet.

- Do not use in countries with 220/240 volt electrical systems; use only with 110/120 volt electrical systems.
- Connect this appliance to a properly grounded outlet only.
- While using the appliance, keep your hair out of it—keep your hair away from the air inlets.
- Do not use an extension cord or a voltage converter with this appliance.
- This appliance has a polarized plug (one blade is wider than the other). As a safety feature, this plug will fit in a polarized outlet only one way. If the plug does not fit fully in the outlet, reverse the plug.
- Never use while sleeping.
- Do not place appliance on any surface while it is operating.
- Do not direct hot air toward eyes or other heat-sensitive areas.
- Attachments may be hot during use. Allow them to cool before handling.
- Never block the air openings of the appliance or place it on a soft surface, such as a bed or couch, where the air openings may be blocked. Keep the air openings free of lint, hair, etc.

KEEP AWAY FROM CHILDREN

SAVE THESE INSTRUCTIONS

3

Safety Instructions

ALCI Safety Device

This hair dryer is provided with an appliance leakage circuit interrupter (ALCI) safety device built into the plug. This device is designed to make the unit inoperable under some abnormal conditions, such as accidental immersion in water. The ALCI safety device is equipped with a test button so that its operation can be checked. This unit should be tested before each use to confirm that the safety device is operational.

To test:

After plugging in your hair dryer:

1. Press the reset button on the ALCI device.
2. Press the test button. The reset button will pop out. This verifies that the safety device is operating properly.
3. Press the reset button to reactivate your ALCI safety device.
4. Your hair dryer is now ready for use.

Note: This unit may automatically trip when unplugged. If so, the unit must be reset after it is plugged in. If the dryer doesn't reset after following the above testing procedure, call 800-736-4648.

1. Should the ALCI safety device trip (i.e., the reset button pops out) during use, press the reset button. Should the hair dryer fail to reset, call 800-736-4648. Never operate this appliance if it has been dropped in water.
2. The dryer is designed to work on ordinary household current only, 125 volts A.C., 60 Hz. It is not intended for commercial use.
3. This appliance is equipped with an automatic thermal limiter, which will cycle off when overheated and come back on when cooled down. If the unit cycles off, unplug the cord for several minutes before restarting.
4. This appliance has a polarized plug (one blade is wider than the other). As a safety feature, this plug will fit in a polarized outlet only one way. If the plug does not fit fully in the outlet, reverse the plug. If it still does not fit, contact a qualified electrician. Do not attempt to defeat this safety feature.



GROUND FAULT CIRCUIT INTERRUPTERS CAN SAVE A LIFE!

If you must use your hair dryer in the bathroom, install a GFCI* now!

Your local electrician can help you decide which type is best for you – a portable unit that plugs into the electrical outlet or a permanent unit installed by your electrician. The National Electrical Code now requires GFCI's in bathrooms, garages, and outdoor outlets of all new homes.

Why do you need a GFCI?

Electricity and water don't mix. If your hair dryer falls in water while it's plugged in, the electric shock can kill you– even if the switch is "off." A regular fuse or circuit breaker won't protect you under these circumstances. A GFCI offers you greater protection.

A GFCI can save your life!

Compared to that, the price is small!

Don't wait... install one now!

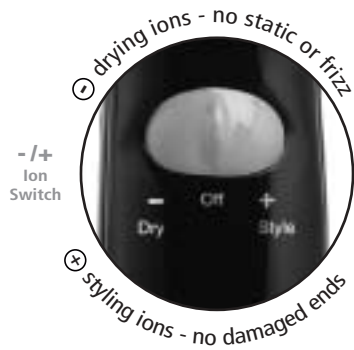
*GFCI is a sensitive device that reacts immediately to a small electric current leak by stopping the electricity flow.



Product Features

Thank you for purchasing the Remington® Protect & Shine™ ionic hair dryer with 3X protection – the ultimate defense against damage.

Complete ion protection & control Remington ion control technology.



Ionic Conditioning
Negative ions prevent static and frizz, giving hair a more healthy-looking shine.



Ceramic Heat
Ceramic emits far-infrared, radiant heat to help dry water molecules inside the hair strand. This fast and efficient process helps prevent heat damage to the outer cuticle for less frizz and shine.

Slow-Moving
Hot Air

High Speed
Airflow

Fast Air

A powerful fan design with a narrow barrel creates a high-speed airflow to help reduce hot spots and over-drying.

1875 watts



How to Use

Basic Drying Techniques

1. Gently towel dry hair to remove excess water. Avoid rubbing hair with towel – this creates split ends and frizziness. Detangle hair with a wide-toothed comb.
2. Be sure dryer is turned off. Plug dryer into an electrical outlet.
3. Set dryer ion switch to negative (-) drying ion position. Turn the dryer on and set it to a high heat and speed. Remove some of the additional moisture from your hair by briskly blowing it all over, using your fingers to “comb” through hair.
4. When hair is almost dry, lower the heat and speed to the desired settings and begin to style.
5. Set ion switch to positive (+) styling ion position. Divide hair into manageable sections. Begin at the nape of your neck and brush hair, following the movement of the brush with the dryer. Continue working your way up to your scalp, then to the sides and the front, drying small sections at a time.
6. Once your desired style is achieved, push the Cool Shot button to set the style with a cool flow of air.

Cool Shot:

The Cool Shot sets the style by blowing a cool stream of air. Press and hold cool shot button to set style. Release button to return to warm air flow.

For straight, smooth hair:

With the dryer turned off, attach the concentrator to the end of the nozzle. Brush hair from underneath using a large, round brush or paddle brush. Pull hair down until the hair is fully extended and taut. Run the dryer slowly down the length of the hair several times until dry. Repeat with all sections of hair until it is completely dried. Lock in the style with the Cool Shot.

For curly hair:

Use dryer on a low heat and speed setting and move it quickly about your head. As you dry your hair, scrunch it with your favorite styling product or twirl strands of hair around your fingers to add definition. When finished drying, lock in the style with the Cool Shot.

HAIR TYPE	RECOMMENDED SETTINGS	
	Airflow	Heat
Short and Curly	Low	Low
Short and Sculptured	High	Low
Mid-Length and Sculptured	Low	Medium
Mid-Length and Sleek	High	Medium
Mid-Length or Long and Curly	Low	High
Long and Sculptured	High	High
Long and Sleek	High	High

Hair Care Tips

Hair Care Tips

- Keep the dryer about 8 inches away from your head to avoid burning scalp or damaging hair.
- Always keep the dryer pointed down the hair shaft to smooth the cuticle and create a silky, shiny style.
- To help prevent heat damage and add shine, spritz damp hair with a heat protection spray before blow drying.
- To create a style with lots of body, apply volumizing mousse to towel dried hair. Distribute it evenly from roots to ends, then blow dry as usual. Hair will be soft, shiny, and full of volume.
- For a super smooth, salon-like blow dry, finish by running a straightening iron over dried hair.
- For a quick touch-up between shampoos, mist hair to dampen it, then style with dryer.

Cleaning and Maintenance

Maintenance Instructions

The dryer needs minimum maintenance to ensure the best performance and long life.

- Keep all intake openings clear of dust accumulation. See "Cleaning Instructions" below. No other maintenance or lubrication is required.
- If the cord becomes twisted due to use, periodically straighten it. Store appliance and cord where they will not be damaged. Do not wrap cord around dryer.
- Do not attempt to repair the appliance yourself.

Cleaning Instructions

The air filter should be cleaned regularly, since a dirty or clogged filter will impair the efficiency of the dryer.

1. To clean air filter, make sure dryer is turned off and unplugged.
2. Gently rotate the air inlet grille counter-clockwise while lifting the air filter away from the dryer.
3. Use a soft bristle brush to gently remove any particles that are lodged in filter.
4. If the unit is dirty, wipe it with a damp cloth.
5. To replace the air inlet after cleaning, align locking tabs and rotate clockwise to secure.

10

Storage

When not in use, unplug the unit. Allow it to cool, and store out of reach of children in a safe, dry location. Never wrap the cord around the appliance, as this will cause the cord to wear prematurely and break. Handle cord carefully, and avoid jerking, twisting, or straining it, especially at plug connections.

Warranty

Full Two-Year Warranty

Spectrum Brands, Inc. warrants this product against any defects that are due to faulty material or workmanship for a two-year period from the original date of consumer purchase. This warranty does not include damage to the product resulting from accident or misuse.

If the product should become defective within the warranty period, we will repair it or elect to replace it free of charge. Please call 800-736-4648.

SPECTRUM BRANDS, INC. SHALL NOT BE RESPONSIBLE FOR ANY INCIDENTAL, SPECIAL OR CONSEQUENTIAL DAMAGES.

This warranty gives you specific legal rights and you may also have other rights which vary from state to state. Some states do not allow the exclusion or limitation of incidental, special, or consequential damages.

Spectrum Brands, Inc. Money-back Offer

If within 30 days after you have purchased your Remington® branded product, you are not satisfied and would like a refund, return it with the sales slip indicating purchase price and date of purchase to the retailer from whom it was purchased. Spectrum Brands, Inc. will reimburse all retailers who accept the product within 30 days from the date of purchase. If you have any questions concerning the money-back guarantee, please call 800-736-4648.

125 VAC 60 Hz

Questions or comments:

Call 800-736-4648
or visit www.remington-products.com

REMINGTON and PROTECT&SHINE are trademarks of ROVICAL, INC.

©2005 ROVICAL, INC.
06/05 Job# CS27326
Spectrum Brands, Inc.
800-736-4648

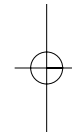
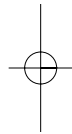
T2207838

MADE IN CHINA

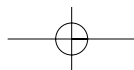


This product is listed by Underwriters Laboratories, Inc. and bears the mark.

11



REMINGTON®



Free Manuals Download Website

<http://myh66.com>

<http://usermanuals.us>

<http://www.somanuals.com>

<http://www.4manuals.cc>

<http://www.manual-lib.com>

<http://www.404manual.com>

<http://www.luxmanual.com>

<http://aubethermostatmanual.com>

Golf course search by state

<http://golfingnear.com>

Email search by domain

<http://emailbydomain.com>

Auto manuals search

<http://auto.somanuals.com>

TV manuals search

<http://tv.somanuals.com>