

REMINGTON®

**SUPER SMOOTH™
1875 Watt Hair Dryer**



Model DS-1000
Please Read
Prior to Use

Congratulations

On the purchase of your new Remington® SuperSmooth™ Dryer. We at Remington wish to thank you for supporting Remington Products Company, L.L.C. with your purchase. As with all Remington products, your SuperSmooth™ Dryer has been manufactured with the utmost care and attention to detail and performance to ensure your complete satisfaction.

Please take a moment to familiarize yourself with the operating instructions prior to use to ensure maximum satisfaction when using your new SuperSmooth™ Dryer. Again, thank you for choosing Remington®.

IMPORTANT SAFEGUARDS

When using electrical appliances, especially when children are present, basic safety precautions should always be followed, including the following.

READ ALL INSTRUCTIONS
BEFORE USING.
DANGER
KEEP AWAY FROM WATER

As with most electrical appliances, electrical parts are electrically live even when the switch is off.

To reduce the risk of electric shock:

1. Always unplug hair dryer immediately after using.
2. Do not use while bathing.

3. Do not place or store appliance where it can fall or be pulled into a tub or sink.
4. Do not place or drop into water or other liquid.
5. If an appliance falls into water, “unplug it” immediately. **Do not reach into the water.**

WARNING

To reduce the risk of burns, electrocution, fire, or injury to persons:

1. An appliance should never be left unattended when plugged in.
2. Close supervision is necessary when this appliance is used by, on, or near children or invalids.
3. Use this appliance only for its intended use as described in this manual. Do not use attachments not recommended by Remington.
4. Never operate this appliance if it has a damaged cord or plug, if it is not working properly, or if it has been dropped, damaged, or dropped into water. Return the appliance to Remington Customer Service for repair or replacement.
5. Keep the cord away from heated surfaces. Do not wrap the cord around the appliance.
6. Never block the air openings of the appliance or place it on a soft surface, such as a bed or couch, where the air openings may be blocked. Keep the air openings free of lint, hair, etc.
7. Never use while sleeping.
8. Never drop or insert any object into an opening on the dryer.
9. Do not use outdoors or operate where aerosol (spray) products are being used or where oxygen is being administered.
10. Do not direct hot air toward eyes or other heat sensitive areas.
11. Attachments may be hot during use. Allow to cool before handling.
12. Do not place appliance on any surface while it is operating.
13. While using the appliance, keep your hair out of it—keep your hair away from the air inlets.
14. Do not use in countries with 220/240 volt electrical systems — use only with 110/120 volt electrical systems.
15. Do not operate with a voltage converter.
16. Connect this appliance to a properly grounded outlet only.
17. Do not use an extension cord with this appliance.
18. Household use only.

IMPORTANT: YOU CANNOT USE THE THERMAL BRUSH AND COMB WHEN THE APPLIANCE IS IN THE DRYER (ANGLED) POSITION. SERIOUS DAMAGE TO PRODUCTS OR ATTACHMENTS MAY OCCUR.

**SAVE THESE
INSTRUCTIONS**

1. This hair dryer is provided with an appliance leakage circuit interrupter (ALCI) safety device built into the plug. This device is designed to make the unit inoperable under some abnormal conditions, such as accidental immersion in water. The ALCI safety device is equipped with a test button so that its operation can be checked.

This unit should be tested before each use to confirm that the safety device is operational.

TO TEST:

After plugging in your hair dryer:

1. Press the reset button on the ALCI device.
2. Press the test button. The reset button will pop out. This verifies that the safety device is operating properly.
3. Press the reset button to reactivate your ALCI safety device.
4. Your hair dryer is now ready for use.

Note: This unit may automatically trip when unplugged. If so, unit must be reset after it is plugged in. After following the above testing procedure, should the indicator device not function properly, return the dryer to Remington Customer Service for examination and repair or replacement.

1. Should the ALCI safety device trip (i.e., reset button pop out) during use, press the reset button. Should the dryer fail to reset, return the dryer to Remington Customer Service for examination and repair or replacement. Never operate this appliance if it has been dropped in water; return it to Remington Customer Service for examination and repair or replacement.
2. The dryer is designed to work on ordinary household current only, 125 volts A.C., 60 Hz. It is not intended for commercial use.
3. This appliance is equipped with an automatic thermal limiter which will cycle off when overheated and come back on when cooled down. If the unit cycles off, unplug the cord for several minutes before restarting.
4. This appliance has a polarized plug (one blade is wider than the other). As a safety feature, this plug will fit in a polarized outlet only one way. If the plug does not fit fully in the outlet, reverse the plug. If it still does not fit, contact a qualified electrician. Do not attempt to defeat this safety feature.



This message about...
Ground Fault Circuit
Interrupters
can save a life!

If you must use your hair dryer in the bathroom, install a GFCI* now!

Your local electrician can help you decide which type is best for you—a portable unit that plugs into the electrical outlet or a permanent unit installed by your electrician. The National Electrical Code now requires GFCI's in bathrooms, garages, and outdoor outlets of all new homes.

Why do you need a GFCI?

Electricity and water don't mix. If your hair dryer falls in water while it's plugged in, the electric shock can kill you... even if the switch is "off." A regular fuse or circuit breaker won't protect you under these circumstances. A GFCI offers you a greater protection.

A GFCI can save your life!

Compared to that, the price is small!

Don't wait... install one now! *GFCI is a sensitive device which reacts immediately to a small electric current leak by stopping the electricity flow.



Product Features

SuperSmooth™ Dryer

1875 Watt Dryer when handle is in locked into the angled position

IMPORTANT: YOU CANNOT USE THE THERMAL BRUSH AND COMB WHEN THE APPLIANCE IS IN THE DRYER (ANGLED) POSITION. SERIOUS DAMAGE TO PRODUCTS OR ATTACHMENTS MAY OCCUR.

1000 Watt Air Styler when handle is locked into the straight position

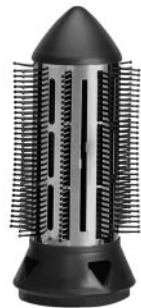
Styling Attachments simply snap on to the end of the barrel – USE ATTACHMENTS ONLY WHEN THE DRYER IS IN THE STRAIGHT POSITION.

- **Non-Stick Teflon® Coated Thermal Brush** Transfers heat creating long lasting styles
- **Comb Detangles** and creates straight, sleek styles

Heat and Speed Settings on one control switch

- Dryer has 2 style settings – high low
- Air Styler has 1 style settings – slow

IMPORTANT: When the dryer is in the Styler (STRAIGHT) position the HIGH heat setting automatically locks and will not operate.



Brush attachment



Comb attachment



Concentrator for straightening and styling – simply snaps on to the end of the barrel

Air Intake Grill cleans easily

Cool Shot locks in style

Dryer has 2 style settings – high low

Air Styler has 1 style settings – low

6 foot cord with hang loop

HOW TO USE

Remove most of the moisture from your hair by blotting hair with a towel (rubbing creates tangles).

With the dryer in angled position, use on the most comfortable heat heating for you, keeping dryer 8 inches from scalp.

When hair is slightly damp, use the air styler (straight position) with either the comb or brush to complete your desired style. The comb creates sleek, smooth styles and the brush is perfect for flipping hair out or curling under. The brush can also be used for straightening really thick, curly hair.

MAINTENANCE INSTRUCTIONS

1. Do not attempt to repair the appliance yourself. Return to Remington Customer Service.
2. Keep all intake openings clear of dust accumulation. See "Cleaning Instructions" below. No other maintenance or lubrication is required.
3. If the cord becomes twisted due to use, periodically straighten. Store appliance and cord where they will not be damaged. Do not wrap cord around dryer.

CLEANING INSTRUCTIONS

1. Your new dryer needs minimum maintenance to ensure the best performance and long life. To clean the air filter, make sure the dryer is turned off, and plug is pulled out of socket.
2. Use a soft bristle brush or damp cloth to remove any particles that are lodged in the screen.

Full Two-Year Warranty

Remington Products Company, L.L.C. warrants this product against any defects that are due to faulty material or workmanship for a two-year period from the original date of consumer purchase. This warranty does not include damage to the product resulting from accident or misuse.

If the product should become defective within the warranty period, we will repair it or elect to replace it free of charge. We will return your product, transportation charges prepaid, provided it is delivered prepaid to: Remington Products Company, L.L.C. 60 Main Street, Bridgeport, CT 06604, Attention: Service Department. Include a letter indicating the reason for the return.

REMINGTON SHALL NOT BE RESPONSIBLE FOR ANY INCIDENTAL, SPECIAL OR CONSEQUENTIAL DAMAGES.

This warranty gives you specific legal rights and you may also have other rights which vary from state to state. Some states do not allow the exclusion or limitation of incidental, special or consequential damages.

REMINGTON MONEY BACK OFFER

If within 90 days after you have purchased your Remington dryer, you are not satisfied and would like a refund, take back the dryer and sales slip indicating purchase price and date of purchase to the retailer from whom the dryer was purchased. Remington will reimburse all retailers who accept this item within 90 days from date of purchase. If you have any questions concerning the money back guarantee, please call 1-800-736-4648.

125 VAC, 60Hz, 1875W



This product is Listed by Underwriters Laboratories, Inc. and bears the mark.



Questions or Comments: Please call 1-800-736-4648



Visit us at www.remington-products.com

REMINGTON PRODUCTS COMPANY, L.L.C.
60 Main Street Bridgeport, CT 06604
MADE IN CHINA

Remington and SuperSmooth are trademarks of Remington Corporation, L.L.C.
Teflon is a registered trademark of E.I. du Pont de Nemours Company and is used under license by Remington.
©2002 R.P.C., L.L.C. 5/02 Job# WPC02-046 Part# 10516

Free Manuals Download Website

<http://myh66.com>

<http://usermanuals.us>

<http://www.somanuals.com>

<http://www.4manuals.cc>

<http://www.manual-lib.com>

<http://www.404manual.com>

<http://www.luxmanual.com>

<http://aubethermostatmanual.com>

Golf course search by state

<http://golfingnear.com>

Email search by domain

<http://emailbydomain.com>

Auto manuals search

<http://auto.somanuals.com>

TV manuals search

<http://tv.somanuals.com>