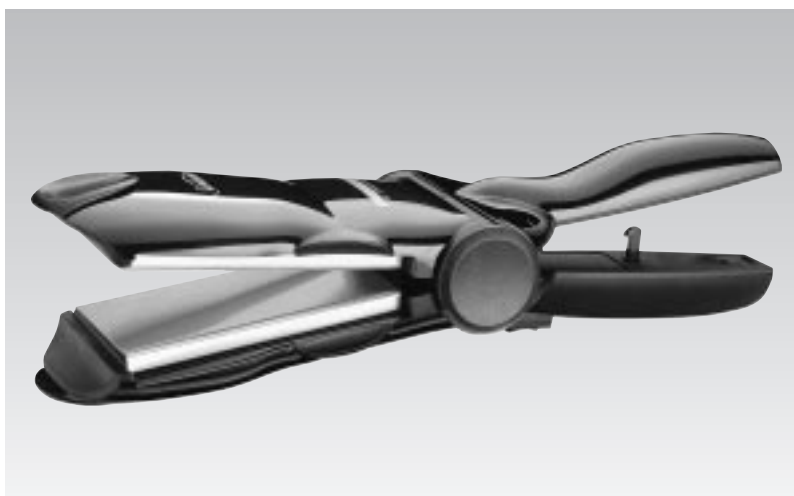


*Sunbeam*

# Salon Finish Professional Hair Straightener

INSTRUCTION BOOKLET.



PLEASE READ THIS BOOK THOROUGHLY AND RETAIN FOR FUTURE REFERENCE.

HS9200

# Sunbeam's Safety Precautions.

## SAFETY PRECAUTIONS FOR YOUR PROFESSIONAL STRAIGHTENER.

- This hair styler must not come into contact with water or any other liquid.
- Always switch off your hair styler at the power outlet and remove the plug when not in use.
- Do not store your hair styler near tubs, basins, baths or other vessels containing water.
- When the hair styler is used in the bathroom, unplug it after use since the proximity of water presents a hazard, even when the unit is switched off.
- Do not touch heating plates when in use as they are extremely hot.
- Do not use this hair styler if hair is treated with flammable products such as hair spray.

## SAFETY PRECAUTIONS FOR ALL ELECTRICAL APPLIANCES

Sunbeam are very safety conscious when designing and manufacturing consumer products, but it is essential that the product user also exercise care when using an electrical appliance. Listed below are precautions which are essential for the safe use of an electrical appliance:

- Read carefully and save all the instructions provided with an appliance.
- Always turn the power off at the power outlet before you remove a plug. Remove by grasping the plug - do not pull on the cord.
- Turn the power off and remove the plug when the appliance is not in use and before cleaning.
- Do not use your appliance with an extension cord unless this cord has been checked and tested by your electricity supplier or qualified technician.
- Always use your appliance from a power outlet of the voltage (A.C. only) marked on the underside of the appliance.
- Close supervision is necessary when your appliance is being used near children or infirm persons.
- Never leave an appliance unattended while in use.
- Young children or infirm persons should be supervised to ensure that they do not play with the appliance.
- Do not use an appliance for any purpose other than its intended use.
- Do not place an appliance on or near a hot gas flame, electric element or in a heated oven. Do not place on top of any other appliance.
- Do not let the power cord of an appliance hang over the edge of a table or bench top or touch any hot surface.
- Do not immerse in water.
- For safety reasons and to avoid maintenance by unskilled persons, some appliances are 'sealed' using tamperproof means as specified by S.A.A. (Standards Association of Australia). Such appliances should always be returned to the nearest Service Centre for adjustment or repair if required.
- Do not operate any electrical appliance with a damaged cord or after the appliance has been dropped or damaged in any manner; if damage is suspected, return the appliance to the nearest Service Centre for examination, repair or adjustment. As a service to Customers, Service Centres will carry out a free check on your appliance to ensure it is electrically safe.
- For additional protection Sunbeam recommend the use of a residual current device (RCD) with a tripping current not exceeding 30mA in the electrical circuit supplying the power outlet in use.

If you have any concerns regarding the performance and use of your appliance, please ring our Toll Free number (Australia only) 1800 025 059. New Zealand - contact the Sunbeam Office in Auckland on 09 912 0747.

## Ensure the above safety precautions are understood.

تأكد من تفهم احتياطات السلامة المذكورة اعلاه

請務必理解上述的安全預防措施。

Assurez-vous que les précautions ci-dessus relatives à la sécurité sont bien comprises

Versichern Sie sich daß die obenstehenden Sicherheitsmaßnahmen Verstanden werden

Βεβαιώστε πως οι παραπάνω προφυλάξεις ασφαλείας γίνονται κατανοητές

Pastikan bahwa tindakan-tindakan keselamatan seperti di atas dimengerti anda

Accertatevi che le suddette norme di sicurezza siano comprese a dovere

上記の注意事項をよくお読みになり、安全を御確認ください

Уверете се дека погоре споменатите мерки на предпазливост се добро разбрани

Asegúrese de que las precauciones de seguridad precedentes sean bien comprendidas

کاری یکنید کہ احتیاط‌های بالا حتماً درک بشوند

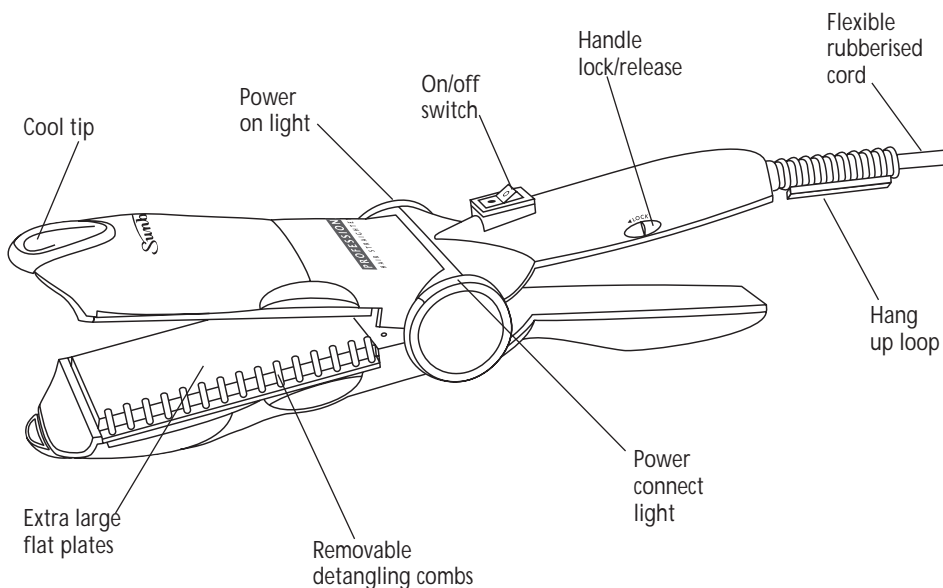
ต้องแน่ใจว่า ข้อควรระวังเรื่องความปลอดภัยข้างต้น เป็นที่เข้าใจกันดี

Yukarda belirtilen güvenlik önlemlerinin anlaşıldığının emin olunuz

Xin kiểm chắc rằng những biện pháp làm an toàn kể trên được hiểu rõ

# Features of your Professional Straightener.

---



## Salon design and performance

The Sunbeam Professional Straightener gives you that sleek, salon finish at home.

## Professional PTC element

Heats up to 210°C in less than 2 minutes and maintains a constant temperature between 180°C and 190°C for fast, sleek straightening.

## Extra large plates

The extra large flat plates allow you to straighten larger sections of hair at any one time, for faster, smoother results.

## Removable detangling combs

Help to keep hair smooth and free of tangles during straightening, or can be removed as desired.

## Locking handle

Ensures smooth, even straightening and convenient, compact storage.

## Power and Heating Indicator Lights

The red light illuminates to indicate that the straightener is connected to the power outlet and the power is turned on. The green light illuminates when the unit is switched on (1) and heating.

# Using your Professional Straightener.

---

## Using Your Professional Straightener

1. Insert the plug into the power outlet and turn the power on. The red light will illuminate to indicate that the straightener is connected to the power outlet and the power is turned on. Switch the on/off switch to on (1). The green light will illuminate to indicate that the unit is switched on and heating.
2. Allow the straightener to heat for 2 minutes before using.
3. Ensure hair is completely **dry**. Brush your hair thoroughly.
4. Separate out a section of hair approximately 4cm in width and smooth it with a comb.
5. For best results, start at the scalp and work to the ends of the hair. Place the separated section of hair between the flat plates and close the handle gently around the hair.
6. Hold the styler in position for 3 to 5 seconds, depending on the type of hair (3 seconds for fine hair and up to 5 seconds for thicker or curlier hair).
7. Once the hair is heated carefully slide the styler along the section of separated hair, making sure that the hair is heated and straightened all the way to the ends.
8. Select another section of hair and repeat the process. Continue until all of the hair has been straightened.
9. Once straightening is complete, switch the unit off (0) and remove the plug from the power outlet. Allow to cool completely before storing.

## Care and Cleaning.

---

After use, switch the on/off switch to the off position (0), remove the plug from the power outlet and allow the styler to cool before storing.

To clean the plates, wipe with a soft cloth moistened with a solution consisting of a small amount of hair shampoo in warm water. Wipe the outside of the styler with a damp cloth, and dry with a soft cloth.

Do not wrap the cord around the styler when not in use. Store in a dry place.

*Sunbeam is a registered trademark. Made in China. Due to minor changes in design or otherwise, the product may differ from the one shown in this leaflet. Approved by the appropriate Electrical Regulatory Authorities. Backed by Sunbeam's 3 Year Replacement Guarantee and National Service Network.*

© Copyright. SUNBEAM CORPORATION LIMITED 2001. (INCORPORATED IN N.S.W.) A.C.N. 000 006 771

*For more information or advice on any Sunbeam products, contact the Sunbeam Consumer Service Line on 1800 025 059 in Australia. In New Zealand - contact the Sunbeam Office in Auckland on 09 912 0747.*

## Free Manuals Download Website

<http://myh66.com>

<http://usermanuals.us>

<http://www.somanuals.com>

<http://www.4manuals.cc>

<http://www.manual-lib.com>

<http://www.404manual.com>

<http://www.luxmanual.com>

<http://aubethermostatmanual.com>

Golf course search by state

<http://golfingnear.com>

Email search by domain

<http://emailbydomain.com>

Auto manuals search

<http://auto.somanuals.com>

TV manuals search

<http://tv.somanuals.com>