

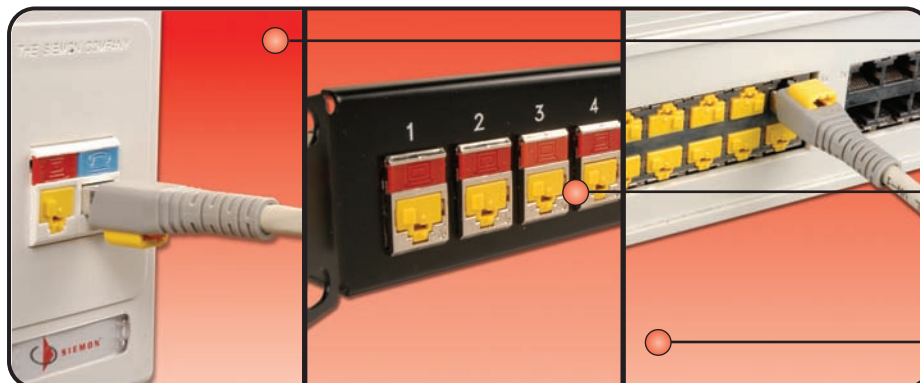
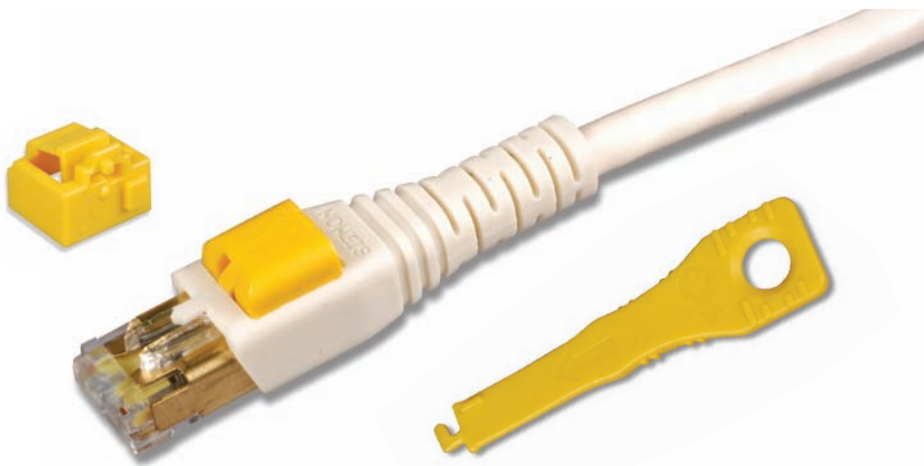
LockIT™ SECURE CONNECTIVITY SYSTEM

The LockIT solution is comprised of two primary elements: the Outlet Lock and the Secure Patch Cord. The Outlet Lock protects an outlet from the insertion of a patch cord or foreign object. The Secure Patch Cord deters unintended or unauthorized disconnection of the cord. Each of these components requires the LockIT universal key for removal, but may be freely inserted into an outlet to secure the connection. All LockIT components are brightly colored in yellow to easily identify secured connectivity.

The LockIT products are compatible with any standards compliant RJ45 outlet. This versatile system can be used in a variety of applications. This flexibility makes LockIT a perfect choice for use in public areas such as schools, retail stores, and waiting areas. LockIT is also an ideal solution to protect mission-critical networks such as data centers, health care environments and government systems.



PATCH CORDS, PLUGS AND CABLE



LockIT can protect work area outlets in public areas from tampering or unwanted access

Patch panel ports may be protected in wiring closets and data centers

LockIT is ideal to secure active equipment ports against unintended or unauthorized connections or disconnections

CONNECTING THE WORLD TO A HIGHER STANDARD

WWW.SIEMON.COM



Outlet Lock

The LockIT™ Outlet Lock fits securely into any standards compliant RJ45 outlet to block access to the port. It locks flush within the outlet opening to provide a clean, attractive appearance without obstructing adjacent ports or protruding beyond the outlet opening. The outlet lock may be safely removed only by using the LockIT universal key.



The outlet lock simply snaps into empty ports with no key required

Insert the universal key into the outlet lock and rotate to unlock

The lock may now be removed and is retained by the key to avoid dropping

Secure Patchcord

The LockIT Secure Patch Cord features a low-profile boot with an integrated lock. That prevents disconnection. The cord can only be removed with the use of the LockIT universal key. The unique plug and boot design incorporates a push-pull action which is based on Siemon's BladePatch® technology. This design provides excellent accessibility in high density environments. The LockIT Secure Patch Cord is offered in 10G 6A™ F/UTP, 10G 6A UTP, and category 6 UTP versions and is fully supported by applicable Siemon System Warranties.



The secure patch cord is easily connected to an available outlet — no need for a key or tool

Insert the key into the lock from the rear to unlock the plug

Pull back on the boot to remove the patch cord from the outlet

APPLICATIONS

The LockIT™ system is a cost-effective way to control physical access to a network. It is easily implemented and highly manageable, making it suitable for a wide range of applications and vertical markets. LockIT is ideal for securing connections in public areas and shared spaces. It also reduces the risk of severing critical connections in data centers, financial services, health care, and other mission critical networks.



Retail

- Prevent tampering in sales floor outlets
- Eliminate accidental disconnection of sales terminals



Transportation

- Protect public terminal connectivity from unauthorized access
- Secure ticketing terminals and self-service kiosk connections



Entertainment/Hospitality

- Block access to public area and guest room outlets
- Deter patch cord theft in guest rooms



Education

- Prevent port damage due to insertion of foreign objects or other vandalism
- Secure classroom computer links and deter cord theft



Data Center

- Reserve/lock out unused ports for future use
- Flag inactive ports
- Prevent accidental disconnection in critical patching fields



Finance

- Add additional layer of security by deterring unauthorized physical connections
- Lock out unused ports
- Lock in-use ports with secure patch cord connections to both outlet and equipment



Health Care

- Inhibit unauthorized guest and patient access to in-room data outlets
- Secure equipment connections in nurse stations, patient reception areas and examination rooms



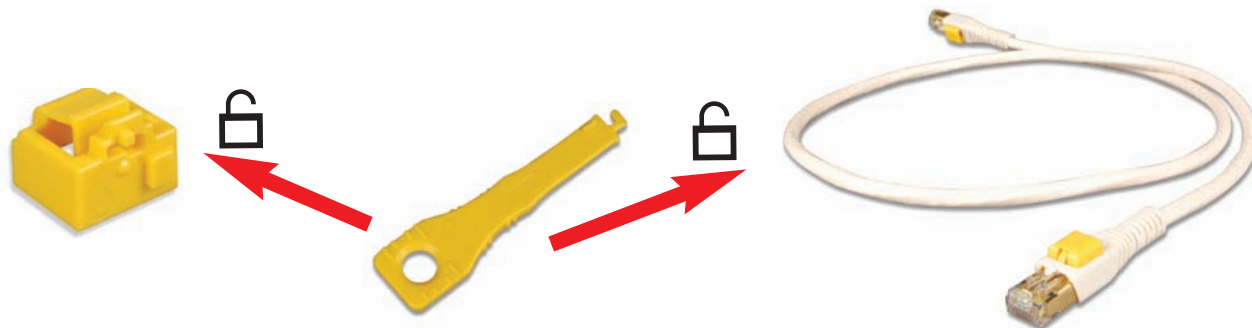
Government

- Identify and protect high security network ports
- Deter critical data breaches by discouraging equipment removal

ORDERING INFORMATION

Universal Key

The LockIT™ Universal Key is used to unlock all LockIT components. The extended length provides the ability to easily unlock the LockIT Outlet or Secure Patch Cord in high density applications. The key is included with the system, and is also available for purchase separately.



LockIT Outlet Lock:

LL-05LockIT Outlet Lock, bag of 10, includes 1 LockIT Universal Key

LockIT Universal Key*:

LKEY-05.....LockIT Universal Key, bag of 10

LockIT Secure Patchcords:

10G 6A F/UTP

LP6A-S(XX)M-(XX)L.....Screened 10G 6A, double-ended, 4-pair, stranded LSOH LockIT secure patch cord, T568A/B, color matching jacket/boot

Use 1st (XX) to specify length:

01 = 1m (3.3 ft.), 1.5 = 1.5m (4.9 ft.), 02 = 2m (6.6 ft.), 03 = 3m (9.8 ft.), 05 = 5m (16.4 ft.)

Use 2nd (XX) to specify jacket/boot color:

01=black, 02=white, 03=red, 04=gray, 05=yellow, 06=blue, 07=green, 09=orange

10G 6A UTP

LP6A-(XX)-(XX).....UTP 10G 6A, double-ended, 4-pair, stranded LockIT secure patch cord, T568A/B, color matching jacket/boot

Use 1st (XX) to specify cord length:

03 = 0.9m (3 ft.), 05 = 1.5m (5 ft.), 07 = 2.1m (7 ft.), 10 = 3.1m (10 ft.), 15 = 4.6m (15 ft.), 20 = 6.1m (20 ft.)

Use 2nd (XX) to specify jacket/boot color:

01 = black, 02 = white, 03 = red, 04 = gray, 05 = yellow, 06 = blue, 07 = green, 09=orange

Category 6

LP6-(XX)-(XX).....Category 6, double-ended, 4-pair, stranded LockIT secure patch cord, T568A/B, color matching jacket/boot

Use 1st (XX) to specify cord length:

03 = 0.9m (3 ft.), 05 = 1.5m (5 ft.), 07 = 2.1m (7 ft.), 10 = 3.1m (10 ft.), 15 = 4.6m (15 ft.), 20 = 6.1m (20 ft.)

Use 2nd (XX) to specify jacket/boot color:

01 = black, 02 = white, 03 = red, 04 = gray, 05 = yellow, 06 = blue, 07=green, 09=orange

*Note: One key is included in each master carton of secure patchcords (20 or less).

Because we continuously improve our products, Siemon reserves the right to change specifications and availability without prior notice.

LockIT™ and BladePatch® are trademarks of Siemon

The Americas

Watertown, CT USA

Phone (1) 860 945 4200 US

Phone (1) 888 425 6165 Canada

Europe/Middle East/Africa

Surrey, England

Phone (44) 0 1932 571771

Asia/Pacific

Shanghai, P.R. China

Phone (86) 21 6390 6778

Central & South America

Bagota, Columbia

Phone (571) 317 2121

WWW.SIEMON.COM

ISO 9001
CERTIFIED

ISO 14001
CERTIFIED



Free Manuals Download Website

<http://myh66.com>

<http://usermanuals.us>

<http://www.somanuals.com>

<http://www.4manuals.cc>

<http://www.manual-lib.com>

<http://www.404manual.com>

<http://www.luxmanual.com>

<http://aubethermostatmanual.com>

Golf course search by state

<http://golfingnear.com>

Email search by domain

<http://emailbydomain.com>

Auto manuals search

<http://auto.somanuals.com>

TV manuals search

<http://tv.somanuals.com>