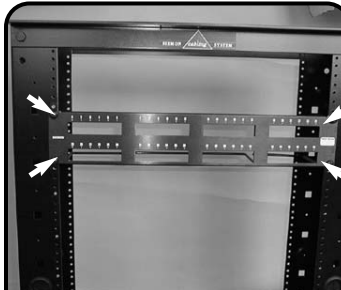
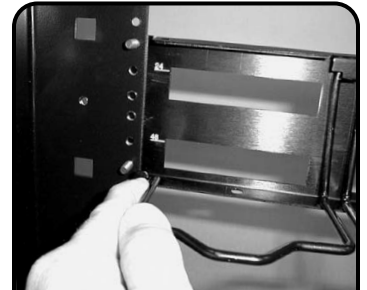


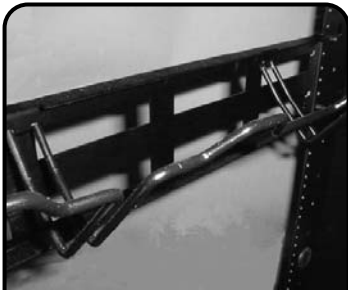
MAX® Patch Panel Instructions



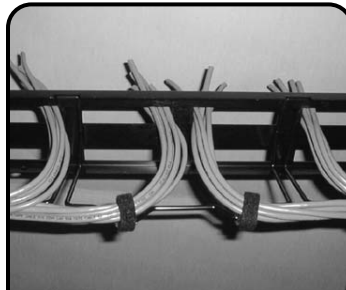
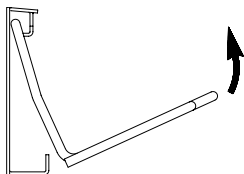
1 Using the #12-24 machine screws and washers provided, mount the patch panel to the desired position on an 19" relay rack or equivalent.



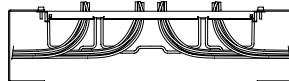
2 The MAX Patch Panel comes with rear cable manager pre-installed. In applications where the rear cable manager is not used, it can be removed by un-hooking the outside legs...



3 ...and rotating the cable manager outward.



4 With rear cable manager in place, cut cables to length for termination (approximately 100-130mm (4-5 inches) of cable from rear management bar).

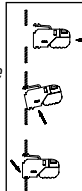


Top View

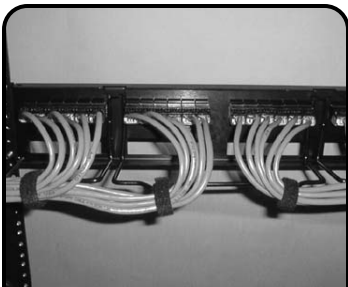


5 Terminate MAX modules and install into patch panel according to the instructions that accompanied the MAX modules.

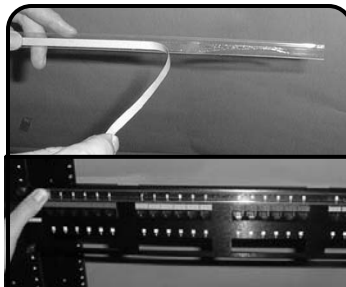
Note: Flat MAX modules are recommended for patch panels and angled MAX modules are recommended for the work area.



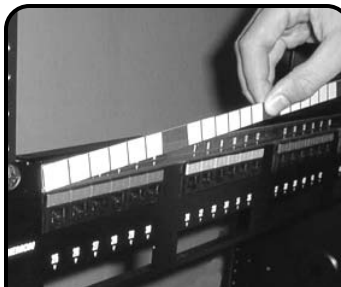
6 Install color coded icons (as shown above) or hinged doors (as illustrated) provided with modules into area above MAX modules to secure modules into panel. (See MAX module instructions for additional details.)



7 After MAX modules are terminated and installed in patch panel, dress cables on rear manager with cable ties provided or Siemon VCM-series cable managers (available separately, see Ordering Information).



8 Install optional label holder by removing paper from adhesive back and adhering to front of patch panel just above rows of MAX modules.



9 Insert paper label into label holder by separating the plastic label holder and inserting paper label between layers of the plastic holder.



10 When using fiber optic MAX modules, an optional fiber management tray is available separately (see Ordering Information). See instructions included with fiber management tray for proper installation.

Note: The rear cable management bar must be removed prior to installation of fiber management tray.

MAX Patch Panel Instructions

To assist safe installations, comply with the following:

- A. Use caution when installing or modifying telecommunications circuits.
- B. Never touch uninsulated wire terminals unless the circuit has been disconnected.
- C. Never install this device in a wet location.
- D. Never install wiring during a lightning storm.

Siemon — Australia

Sydney, Australia
Tel: (61) 2 9452 2666

Siemon — Canada

Markham, Ontario
Tel: (1) 905 940 9223

Siemon — China

Beijing, P.R. China
Tel: (86) 10 6559 8860

Siemon — France

Paris, France
Tel: (33) 1 46 46 11 85

Siemon — Germany

Frankfurt, Germany
Tel: (49) (0) 69 97168 184

Siemon — Italy

Milano, Italy
Tel: (39) 02 64 672 209

Siemon — Latin America

Coral Gables, Florida USA
Tel: (1) 305 446 9150

**Latin American Sales
Manufacturer's Reps**

Castroville, Texas USA
Tel: (1) 830 538 6375

Siemon — Southeast Asia

Singapore
Tel: (65) 345 9119

Siemon — UK

Woking, England
Tel: (44) (0) 1483 480040

Siemon — USA

Watertown, Connecticut
Tel: (1) 866-548-5814



www.siemon.com

Free Manuals Download Website

<http://myh66.com>

<http://usermanuals.us>

<http://www.somanuals.com>

<http://www.4manuals.cc>

<http://www.manual-lib.com>

<http://www.404manual.com>

<http://www.luxmanual.com>

<http://aubethermostatmanual.com>

Golf course search by state

<http://golfingnear.com>

Email search by domain

<http://emailbydomain.com>

Auto manuals search

<http://auto.somanuals.com>

TV manuals search

<http://tv.somanuals.com>