



User Guide

Mini NAS Adapter (NAS25HDU2)

www.addonics.com

v5.1.11

Technical Support

If you need any assistance to get your unit functioning properly, please have your product information ready and contact Addonics Technical Support at:

Hours: 8:30 am - 6:00 pm PST

Phone: 408-453-6212

Email: <http://www.addonics.com/support/query/>

Download from [Www.Somanuals.com](http://www.Somanuals.com). All Manuals Search And Download.

For more detailed information on setting up the mini NAS, refer to the User Manual located on the CD that came with the device.

Follow the instructions to help you connect, setup, and configure it.

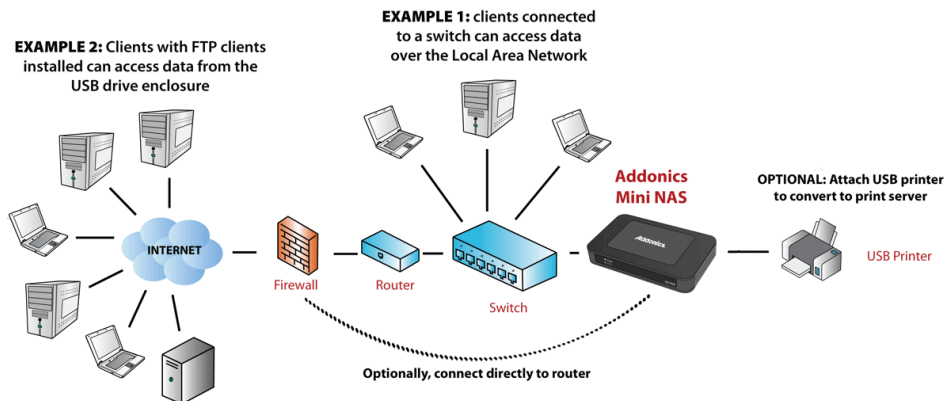
Note: Any 2.5" SATA/SSD drive that you connect to the mini NAS will initially be required to be formatted. This means, if you are connecting a 2.5" SATA/SSD drive with data on it, the hard drive will be formatted erasing all the information. It is recommended that a backup of this drive be made.

Network Environment

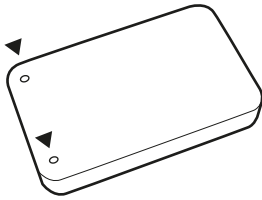
There are 3 different setup conditions you can choose:

- A. Setup mini NAS as a DHCP Client:**
If the mini NAS is connected to a LAN network with an active DHCP server, it will obtain an IP address from DHCP server automatically.
- B. Setup mini NAS as DHCP Server:**
If your LAN network does not have an active DHCP server, the mini NAS will immediately act as DHCP server and assign itself an IP address for installation.
- C. Setup mini NAS in Static IP environment:**
You first need to configure the IP address for mini NAS to operate in the static IP environment. For Configuring details, please refer to "LAN Config" setup page.

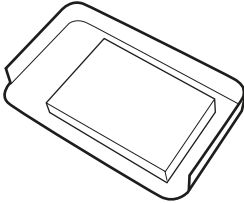
Illustration of a Mini NAS connected over the network



I. Mini NAS Hardware Installation



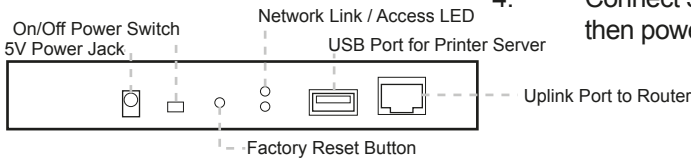
1. To open the mini NAS, remove the 2 screws located at the bottom part of the enclosure.



2. Insert the SATA drive into the SATA connector and secure the drive using the screws provided.

3. Connect LAN cable to uplink port to LAN switch and/or router.

4. Connect 5V power adapter then power up the mini NAS.



Mini NAS connected directly to a computer's NIC card

If you connect the mini NAS to a computer directly, it will act as a DHCP server, assigning itself an IP address automatically and will also assign an IP address to the computer's network card. This configuration will not enable you to see the drive on the network.

Mini NAS connected to a Router or Switch

When the mini NAS is connected to a LAN network with an active DHCP server, it will obtain an IP address from DHCP server automatically. Or if your LAN network does not have an active DHCP server, mini NAS will immediately act as DHCP server and assign itself an IP address for installation.

II. Search mini NAS using SDisk Utility

1. Browse the CD enclosed in the product package. Copy and paste "SDisk Utility" in to your computer then double click the icon to start search.

Note: "SDisk utility" was written with JAVA script, please make sure your computer has installed JAVA before, if not please install the JAVA JRE from the CD drive.



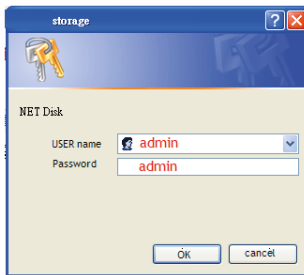
SDisk.jar
Executable Jar File
12 KB

2. When mini NAS has been found, click “Connect” to enter web GUI utility.



Open mini NAS web GUI by using web browser.

1. Open web browser and type default host name “storage” in the search bar.
2. Default login is “admin” for both User name and password. Click “OK” to enter configurations.



Identification

You can change and modify your host, group name and password from this page. Click “Apply” to save the setting.

Host name: This is used to identify your device on the network. If you prefer a different name, type in the new name and click “Apply” to save setting.

Group Name: This should be the same as your workgroup. In general, the default “WORKGROUP” will be OK. But if your workstation belongs to different workgroup, type in the correct group name to modify.

For Window OS, right click on “My computer” and choose “Properties”, go to the computer name tab to see your current workgroup.

If using a Mac OS system, to join a Windows workgroup, open the directory access utility (under Applications-> utilities). Select SMB and click configure to modify the settings (administrator access required to access this option.)

Note: We strongly suggest you to change the password as soon as you logged in, to prevent unauthorized access.

LAN Configuration

By default, "LAN Config" is set to "Automatic IP". This will allow the mini NAS to obtain its IP address automatically. If you prefer setting it manually, select the static IP option, enter your own value and click "Apply" to confirm the new setting.

The screenshot shows the Addonics Mini NAS web interface. The top left features the Addonics Technologies logo and a row of flags representing various countries. A navigation menu on the left includes: Status, Identification, Time Setting, LAN Config (highlighted with a red circle), Disk Utility, Maintenance, Samba Server, FTP Server, Media Server, Print Server, and BitTorrent. The main content area is titled "LAN Config" and contains the following settings:

LAN Config		Apply
<input checked="" type="radio"/> Automatic IP	<input type="radio"/> Static IP as below	
IP Address	<input type="text" value="192.168.1.101"/>	
Subnet Mask	<input type="text" value="255.255.255.0"/>	
Gateway	<input type="text" value="192.168.1.1"/>	
Primary DNS	<input type="text" value="192.168.1.1"/>	
Secondary DNS	<input type="text" value="0.0.0.0"/>	

Below the LAN Config section is the "DHCP Config" section:

DHCP Config		Apply
DHCP Server	Disable <input type="radio"/> Enable <input type="radio"/> <input checked="" type="radio"/> Disable	

At the bottom is the "MAC Address" section:

MAC Address	
MAC Address	00:B3:F6:00:1C:03

Disk Utility

In this page, you can manage hard disk settings of the USB storage device.

Format: For first time installation, you need to format hard disk into FAT32 file system. Formatting the drive will erase all data on the hard drive.

Warning: For hard drives with data on it, create a backup before proceeding to format the hard drive!

Tip: You can transfer back the backup data to the NAS Public folder for sharing via the network or USB connection of the USB Storage device.

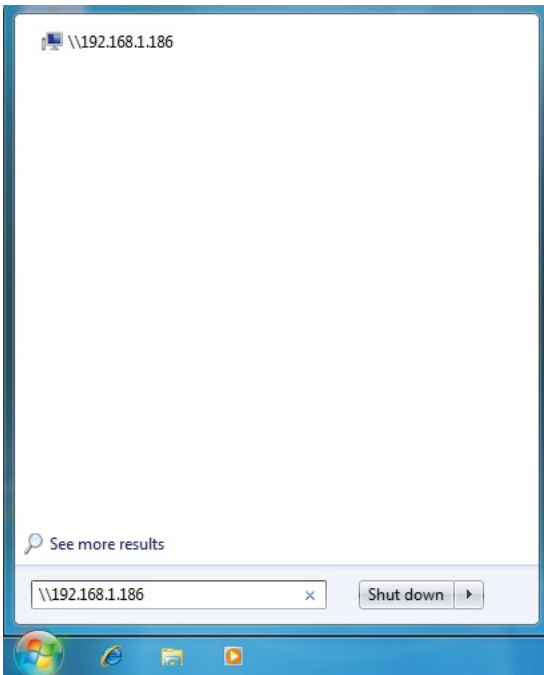
Sleep Time: This is to select hard disk sleeping mode.

Scan Disk: After the scan, it will show file content information and health status for the hard disk.

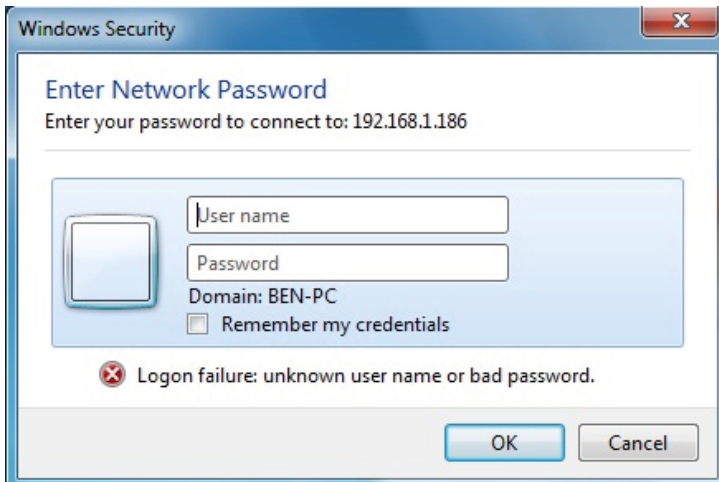
To access Samba PUBLIC folder of mini NAS in Windows

Click on the Windows icon located on the bottom left corner of the screen, on the "Search programs and files" \ followed by the IP address.

Eg:\192.168.1.121 and press Enter key to continue.

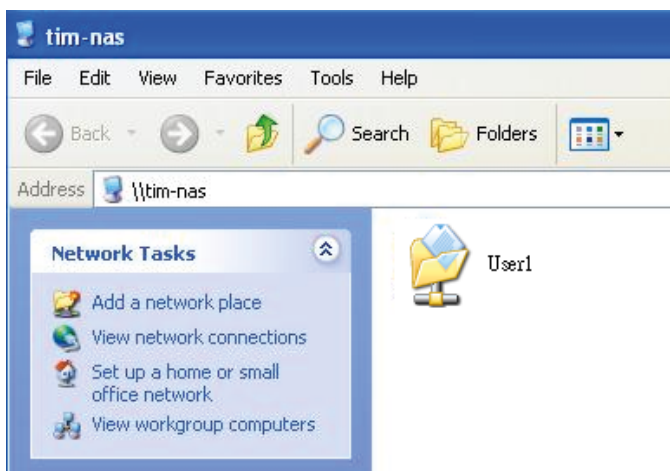


Type "Guest" as username. Leave password empty. Click on OK. This will direct you to the Public folder on the NAS drive.



Now you have set up the folder that you wish to share on your NAS . This folder can be access from other computer on your local network.

Now you have set up the folder that you wish to share on your NAS . This folder can be access from other computer on your local network.



To list the NAS drive in Network Places

Go to Network Places in Windows XP, under Network Tasks, click on the “Set up a home or small office network”. Follow the wizard and once completed, reboot your system.

For Vista and Windows 7, enable file sharing when accessing the NAS over the network.

To access Samba PUBLIC folder of mini NAS in Ubuntu 8.04

First, using the console get the prerequisites for the samba file system:

```
$ sudo aptitude install samba smbfs
```

```
$ mkdir /mnt/NAS
```

```
$ sudo mount.cifs //NAS__IP__address/Public /mnt/NAS -o username=Guest
```

To access Samba PUBLIC folder of mini NAS in Mac OS X

1. Start at the "Go" drop down menu at the top of your screen, then click "Connect to server".
2. Type into the "Server Address" field 'smb://' followed by the IP address of the mini NAS you want to connect.
3. Click the "Connect" button in the bottom right corner of the window.
4. Enter in a username and password. Click the "OK" button in the bottom right hand corner of the window to finish.

Note: The workgroup name needs to be the workgroup the PC belongs to. If you don't know the workgroup that the PC belongs to you can find out by right clicking on the "My Computer" desktop icon on the PC, selecting "Properties" and then selecting the "Computer Name" tab. The workgroup name is about half way down the window.

5. Select the "share" you are after. This simply refers to a particular group of shared files. Click "OK".

CONTACT US

www.addonics.com

Phone: 408-573-8580

Fax: 408-573-8588

Email: <http://www.addonics.com/sales/query/>

Free Manuals Download Website

<http://myh66.com>

<http://usermanuals.us>

<http://www.somanuals.com>

<http://www.4manuals.cc>

<http://www.manual-lib.com>

<http://www.404manual.com>

<http://www.luxmanual.com>

<http://aubethermostatmanual.com>

Golf course search by state

<http://golfingnear.com>

Email search by domain

<http://emailbydomain.com>

Auto manuals search

<http://auto.somanuals.com>

TV manuals search

<http://tv.somanuals.com>