



2.5" USB 2.0 Enclosure Box

Model # AEN-U25W

User's Manual

Ver. 2.0

Table of Contents

1. Introduction.....	3
1.1 Package Contents	3
1.2 Features	3
2. Hard Drive Installation	4
3. Driver Installation for Windows 98SE	8
4. Installation Verification	11
4.1 Windows 98SE.....	11
4.2 Windows ME/2000/XP	12
4.3 Mac OS 10.x	13
5. Hard Drive Usage	14
5.1 Removing the Enclosure Box Safely	14
6. Note on USB Cable.....	15
7. Specifications	16
Technical Support	17

1. Introduction

Thank you for purchasing this 2.5" USB 2.0 Enclosure Box. The Enclosure Box provides an easy way to add removable disk storage space to your computer. The Hi-Speed USB 2.0 interface ensures fast and reliable connection between the external drive and the computer. With the Hot Swap feature, you can connect and disconnect the Enclosure Box without having to turn off your computer.

1.1 Package Contents

Before you begin the installation, please check the contents of your package. The package should include the following items:

- 2.5" USB 2.0 Enclosure Box
- USB 2.0 Cable
- Screws (2)
- Screwdriver
- Driver & Manual CD
- Quick Installation Guide

If any item is damaged or missing, please contact your local dealer immediately. Also, keep the box and packaging materials in case you need to ship the unit in the future.

1.2 Features

- Compatible with IDE/ATA hard drive
- Compliant with USB 2.0 interface
- Compliant with ATA/ATAPI-6 specification Rev 1.0 (PIO mode 0~4, DMA mode 0~2, UDMA mode 0~5)
- Supports USB bus-powered mode
- Supports 8/16-bit standard PIO mode interface
- Supports 16-bit multi-word DMA and Ultra DMA mode interface (Ultra 33/66/100)
- 64/512 bytes Data Payload for full/high speed Bulk Endpoint
- Supports Power Down mode and USB suspend indicator
- Supports Wake-up ability
- Supports plug-and-play, hot-swap

2. Hard Drive Installation

This section provides instructions on how to install a hard drive to the Enclosure Box.

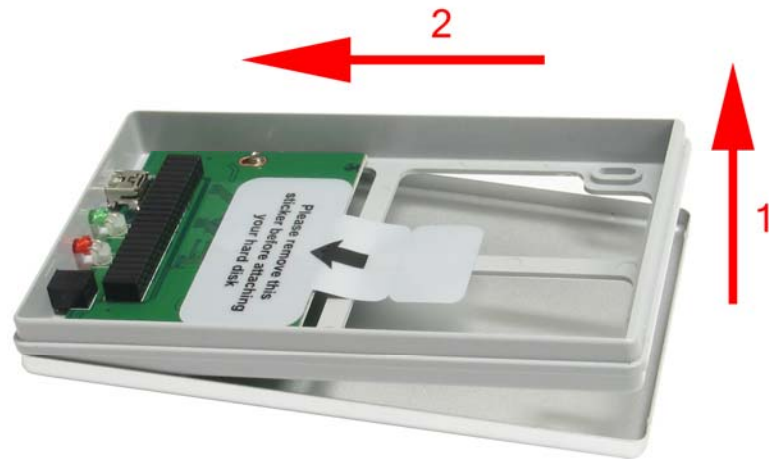
Step 1 Use the provided screwdriver to remove the four screws on the Enclosure Box.



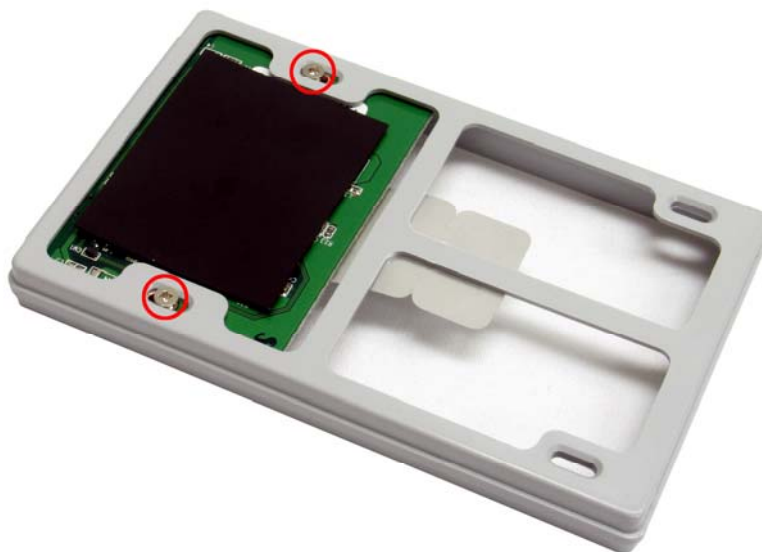
Step 2 Slightly lift the upper cover and slide it forward to unhook the latches.



Step 3 Remove the bottom cover in the same manner. If you find it hard to lift the plastic holder, press it slightly inward.



Step 4 Unscrew the two screws that hold the circuit board and remove it from the plastic holder. Remove the sticker that is on the circuit board as well.



Caution: Be sure to remove the circuit board from the plastic holder before attaching the hard drive; otherwise, the hard drive's IDE pins may be damaged.

Step 5 Attach a 2.5" hard drive to the circuit board's IDE connector with the label of the hard drive facing up. Make sure the IDE pins are fully inserted.



Step 6 Replace the circuit board and the hard drive back to the plastic holder. Verify that the connectors and LED indicators are properly aligned with the openings of the holder.



Step 7 Turn the plastic holder over. Use the provided screws and the screws removed in Step 4 to secure the hard drive onto the holder.



Step 8 Replace the bottom cover to the holder and then replace the upper cover. Be sure to hook the latches when replacing the covers.



Step 9 Fasten the four screws removed in Step 1.

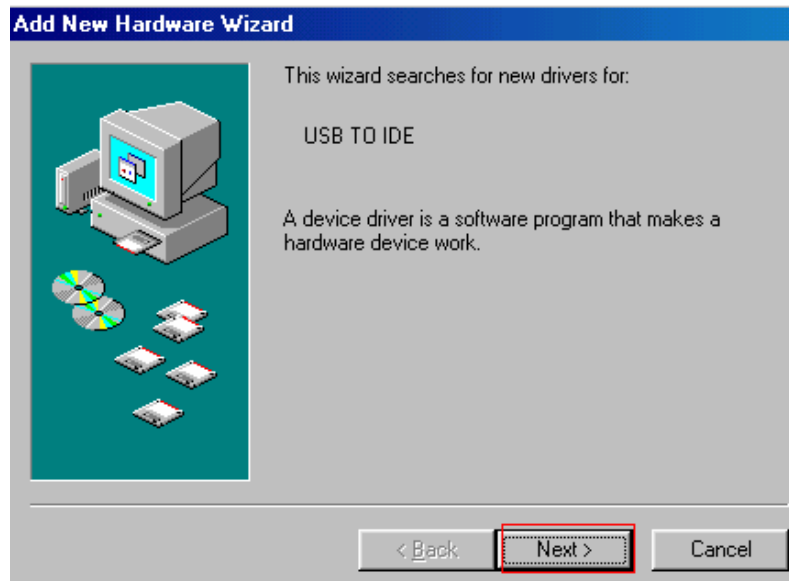
Congratulations! The hard drive installation is complete. You can connect the Enclosure Box to a computer through the USB cable.

3. Driver Installation for Windows 98SE

This Enclosure Box supports Plug-and-Play for Windows ME, 2000, XP, and Mac OS. If you are using Windows 98SE, please refer to the following steps for installing the driver.

Step 1 Connect the Enclosure Box to the computer and insert the provided Driver CD to the CD-ROM drive.

Step 2 Click **Next** when the **Add New Hardware Wizard** appears.



Step 3 Select **Search for the best driver for your device (Recommended)** and click **Next**.



Step 4 Select the **Specify a location** check box and click **Browse** to your CD-ROM drive and open the **Driver/Win98SE** folder. Click **Next**.



Step 5 Click **Next** to install the driver.



Step 6 Click **Finish** to complete the driver installation.

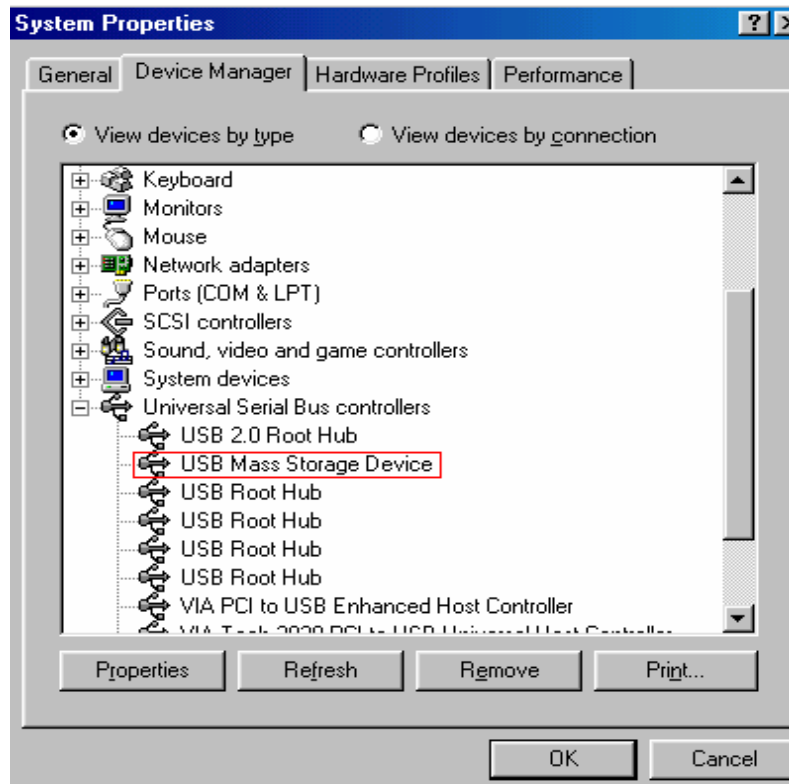


4. Installation Verification

To verify your installation, please follow the steps below.

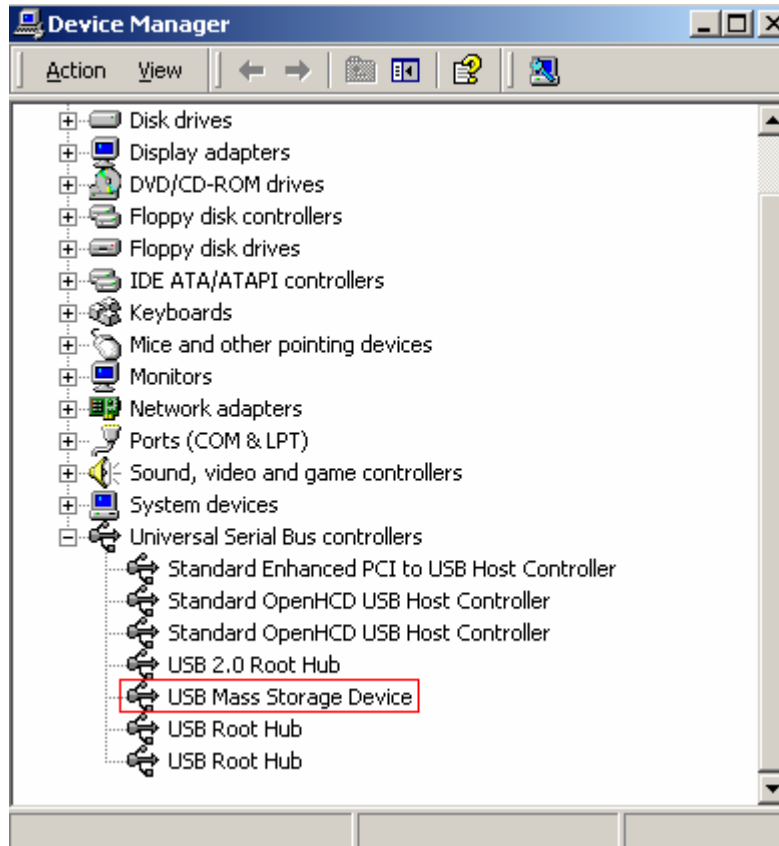
4.1 Windows 98SE

Go to **Control Panel > System > Device Manager** and look for **USB Mass Storage Device** under **Universal Serial Bus controllers**. If it is listed, you have successfully installed the Enclosure Box.



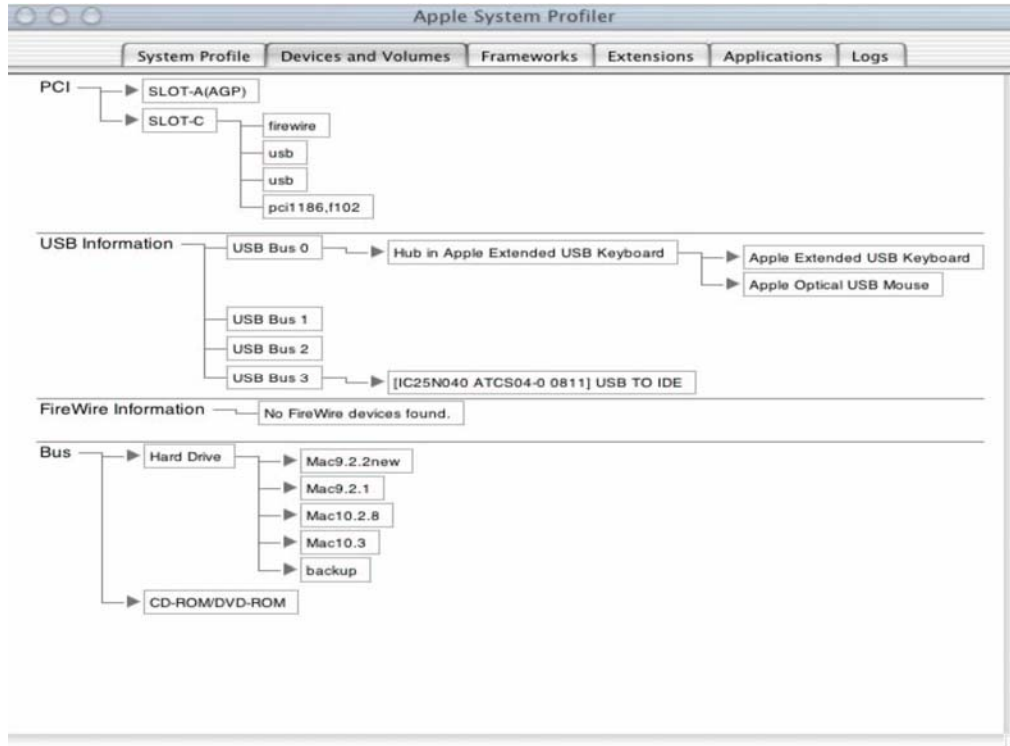
4.2 Windows ME/2000/XP

Go to **Control Panel > System > Device Manager** and look for **USB Mass Storage Device** under **Universal Serial Bus controllers**. If it is listed, you have successfully installed the Enclosure Box.



4.3 Mac OS 10.x

Go to **Apple System Profiler > Devices and Volumes**. If you see the Enclosure Box listed under **USB Information**, you have successfully installed the Enclosure Box.



5. Hard Drive Usage

Now you are ready to use the attached hard drive as an external storage device. A brand new hard drive must be formatted and partitioned first. You can use Windows Disk Management utility in Windows XP/2000, Mac built-in partition utility, or other disk management software as required to perform disk-related tasks. Please refer to your software documentation for instructions.

You can read and write files to and from the hard drive as you would with an ordinary hard drive.

5.1 Removing the Enclosure Box Safely

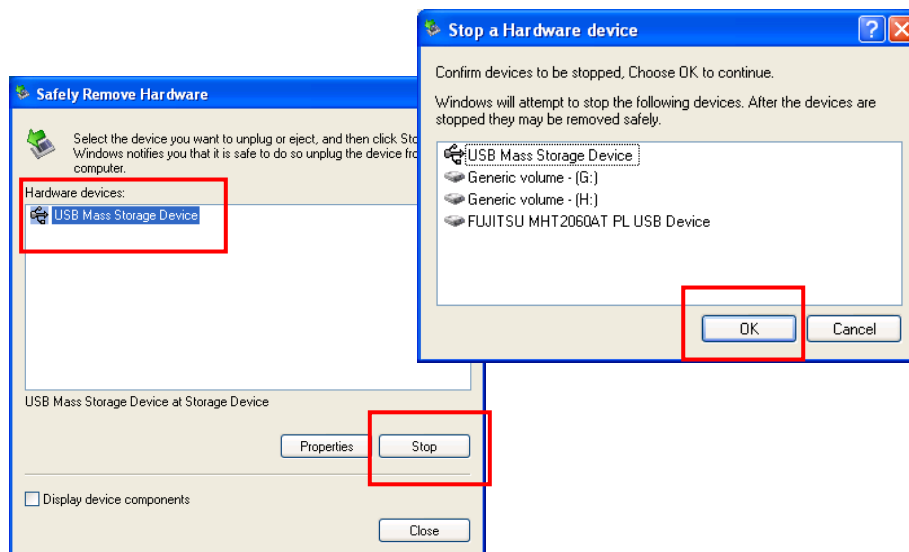
Before unplugging the Enclosure Box from your computer or powering it off, please take the following steps to safely remove the device in order to prevent any data loss.

Under Windows

Step 1 In the System Tray, right-click the unplug/eject icon and select **Unplug or eject hardware** or **Safely Remove Hardware**.



Step 2 Select the device you want to unplug, then click **Stop** and **OK**.



Step 3 When Windows notifies you that it is safe to do so, unplug the Enclosure Box from your computer.



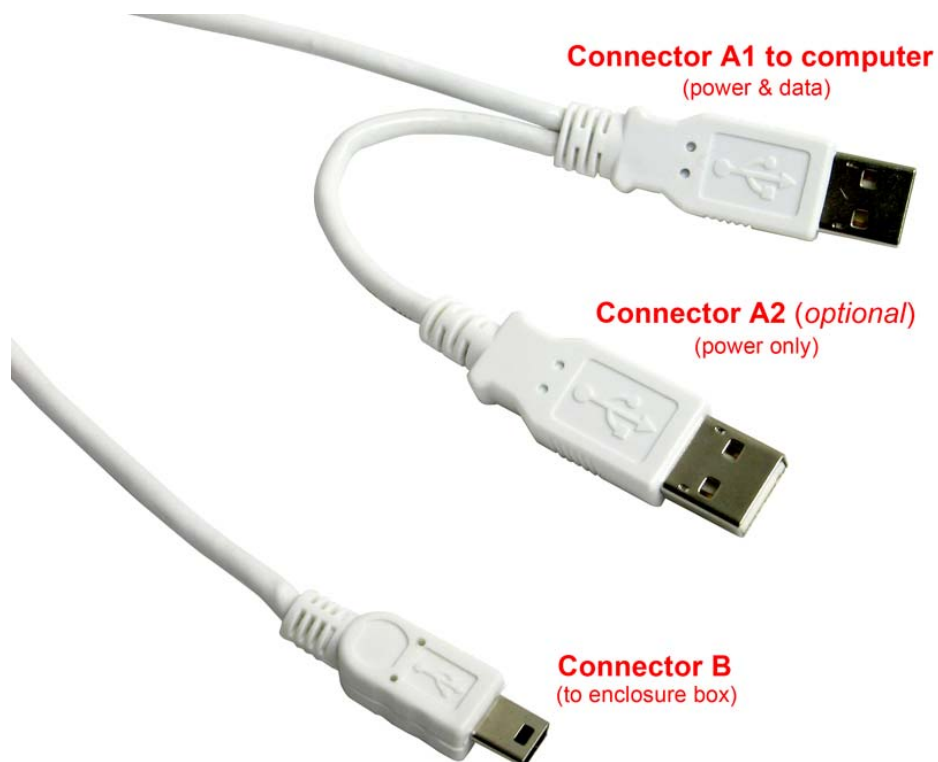
Under Mac OS

Drag the corresponding USB disk icon that represents the hard drive to the trash can. When prompted, click **OK** and unplug the Enclosure Box from your computer.



6. Note on USB Cable

The supplied USB cable has two Type A Connectors labeled **A1** and **A2** and a Mini Type B Connector labeled **B**. Plug connector **B** to the Enclosure Box and connector **A1** to your computer's USB port. The optional connector **A2** is only needed when the hard drive in the Enclosure Box requires additional power.



7. Specifications

Standards

- USB2.0

HDD Support

- 2.5" IDE HDD

Ports

- 1 Mini USB 2.0 Type B receptacle
- 1 Power port

Power Mode

- Bus-powered (USB)
- Self-powered (optional adapter, 5V/2.5A)

LED

- 1 for HDD R/W (Green)
- 1 for Power (Red)

Material

- Aluminum

System Requirement

- Pentium-233MHZ or above
- 64 MB RAM
- One available USB 2.0 Port
- Windows 98SE/ME/2000/XP and MAC OS 9.0 or above

Environment

- Operating Temp: 0 to 40°C
- Storage Temp: -5 to 60°C
-

Dimension

- 123 x 76 x 13mm (L x W x H)

Weight

- 70g

Safety Approval

- FCC and CE

Warranty

- 1-Year Limited Warranty

Technical Support

E-mail: support@airlink101.com

Toll Free: 1-888-746-3238

Web Site: www.airlink101.com

* Actual data throughput will vary. Network conditions and environmental factors lower actual data throughput rate. Specifications are subject to change without notice.

Copyright ©2006 AirLink101™ All rights reserved. AirLink101, the stylized AirLink101 logo, specific product designations, and all other words and logos that are identified as trademarks and/or service marks are, unless noted otherwise, the trademarks and service marks of AirLink101. All other product or service names are the property of their respective holders. AirLink101 products are protected under numerous U.S. and foreign patents and pending applications, mask work rights, and copyrights.

Free Manuals Download Website

<http://myh66.com>

<http://usermanuals.us>

<http://www.somanuals.com>

<http://www.4manuals.cc>

<http://www.manual-lib.com>

<http://www.404manual.com>

<http://www.luxmanual.com>

<http://aubethermostatmanual.com>

Golf course search by state

<http://golfingnear.com>

Email search by domain

<http://emailbydomain.com>

Auto manuals search

<http://auto.somanuals.com>

TV manuals search

<http://tv.somanuals.com>