



1-Port USB 2.0 Print Server

Model # APSUSB201

Quick Installation Guide

Ver. 2A

Section 1

Connecting the Print Server

Warning: Only a USB printer may be connected to the USB port of the Print Server. Connecting any other USB device to the Print Server may damage the Print Server.

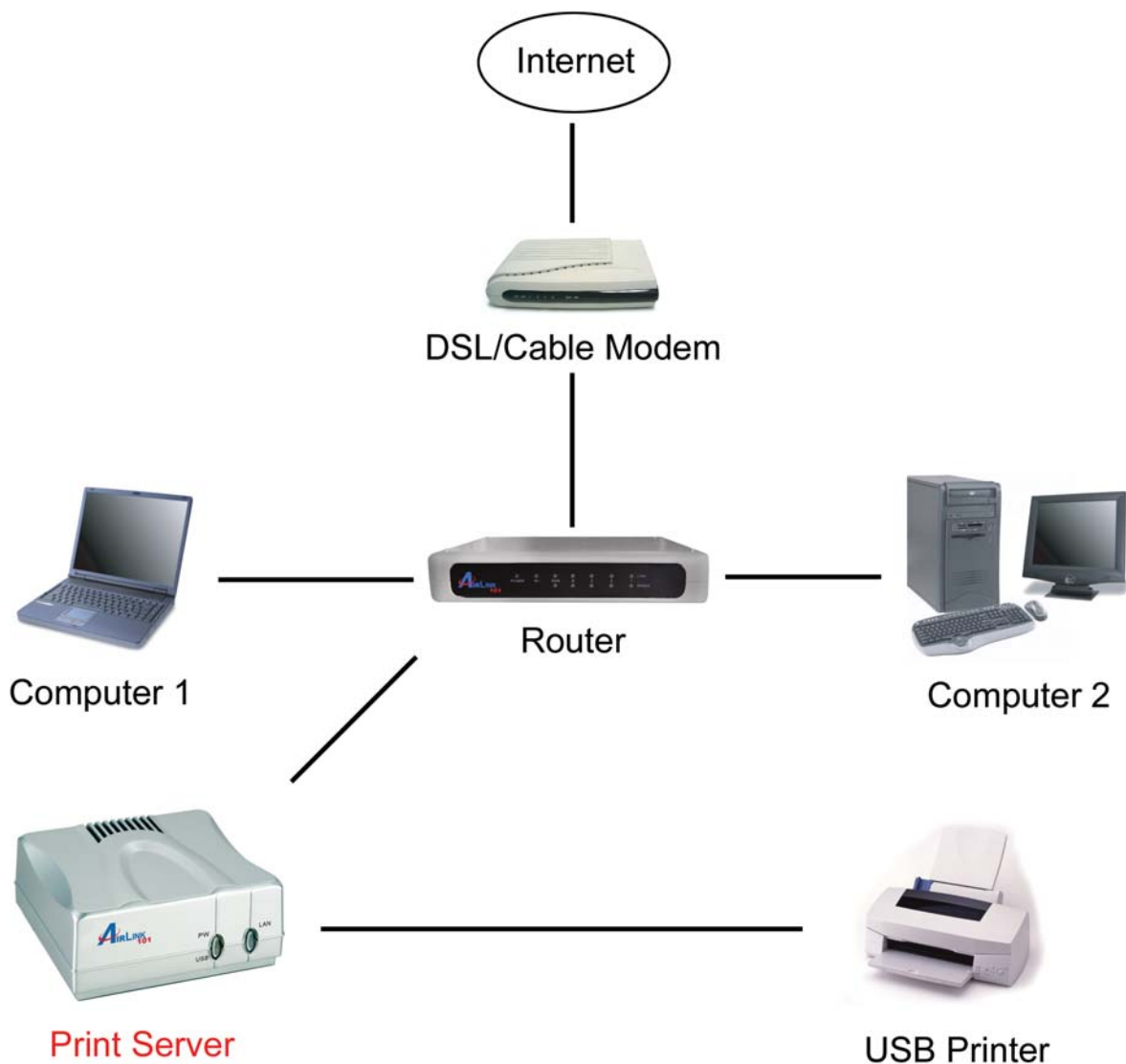
Note: Do not plug the power cord to the Print Server until you have reached **Step 4** of this section.

Step 1 Connect one end of the Ethernet cable to the RJ-45 port of the Print Server and attach the other end of the cable to a router.

Step 2 Make sure the printer is powered **OFF**, then connect one end of the USB cable to the USB port of the Print Server and attach the other end of the cable to the USB port of the printer.

Step 3 Power **ON** the printer.

Step 4 Plug one end of the power cord into the Print Server and the other end into an electrical outlet.



Section 2

Installing PS Utility

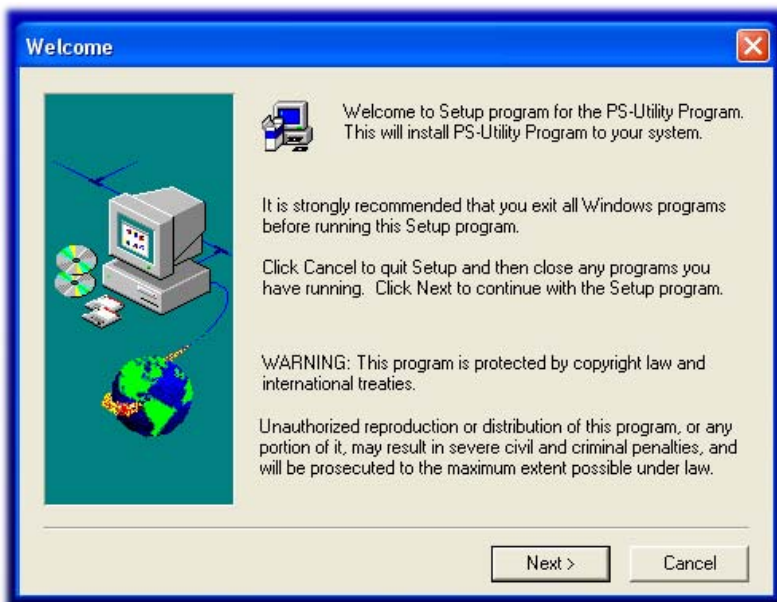
Step 1 Insert the provided CD and wait for the setup menu to appear.

Step 2 Click on **PS Utility**.



Note: If the setup menu does not appear automatically after you have inserted the CD, go to **Start, Run,** type **D:\autorun.exe** (where **D** is the letter of your CD drive) and click **OK**.

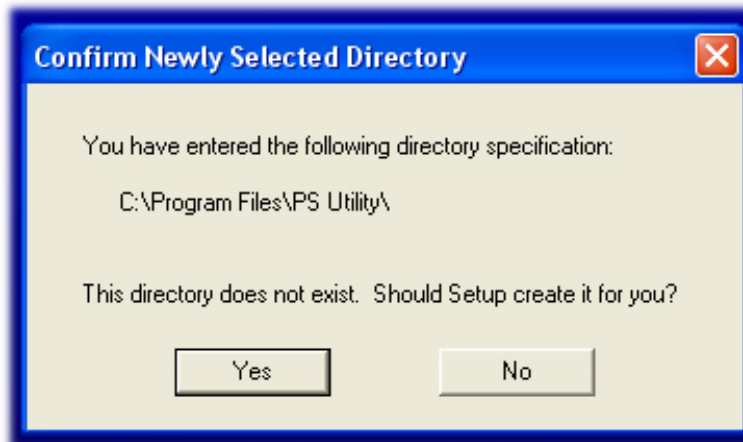
Step 3 Click **Next**.



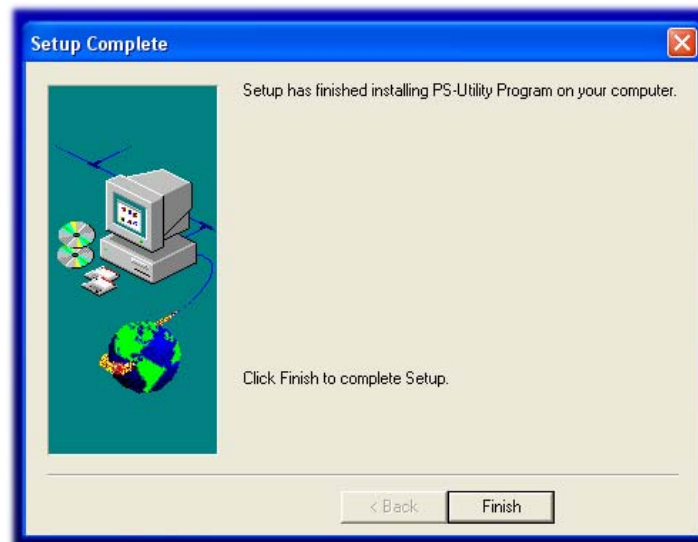
Step 4 Click **Next**.



Step 5 Click **Yes**.



Step 6 Click **Finish**.



Section 3

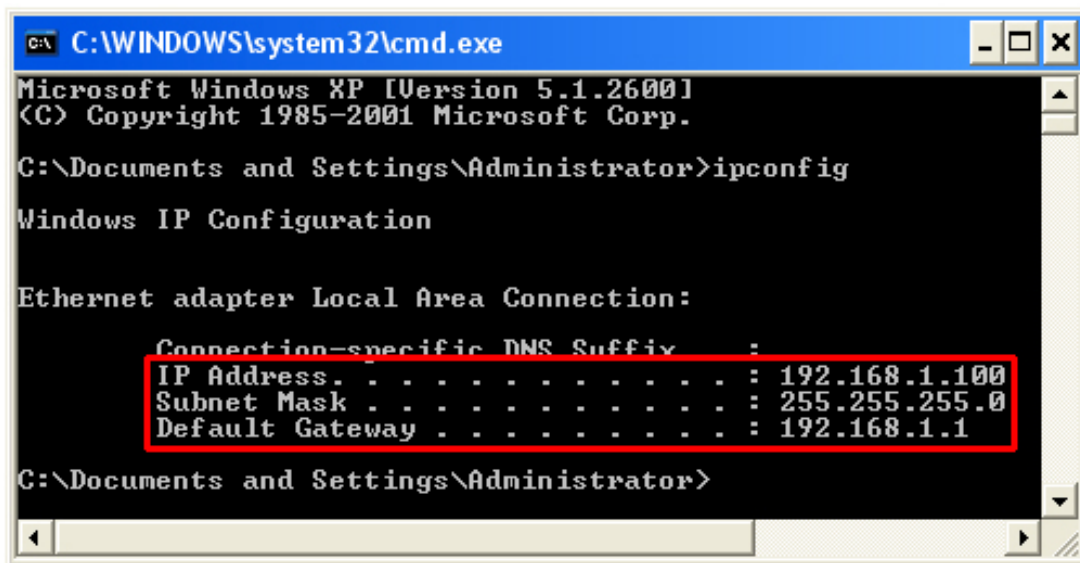
Configuring Network Setting

Before configuring the Print Server's network setting, please take note of your computer's TCP/IP setting.

Step 1 Click on **Start**, **Run**, and type **command** (for Windows 95/98/ME) or **cmd** (for Windows 2000/XP) and click **OK**.

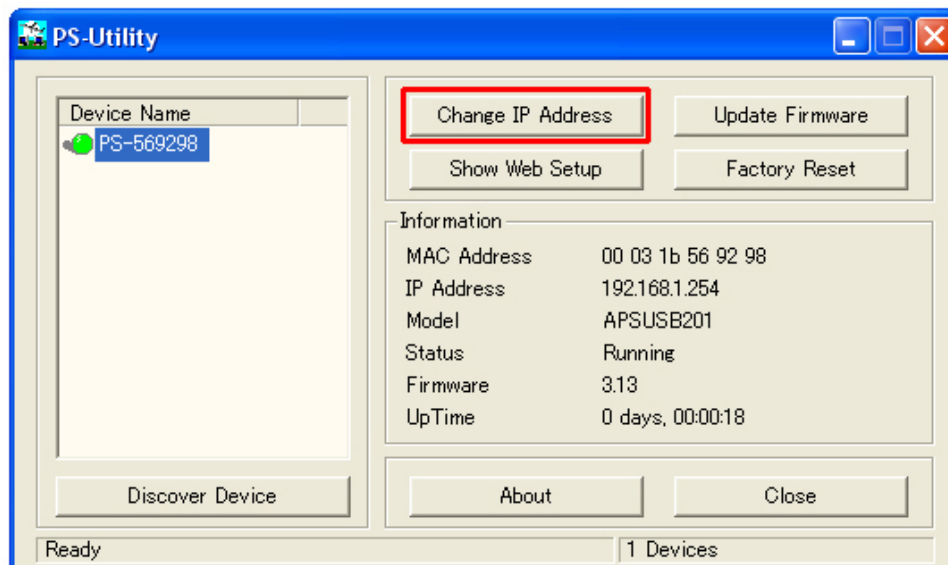
Step 2 At the command prompt, type **ipconfig** and press **Enter**.

Step 3 Write down the information for the **IP Address**, **Subnet Mask**, and **Default Gateway**. You will need these information later.



Step 4 Run the PS Utility by going to **Start**, **(All) Programs**, **PS Utility**, **PS Utility v2.00**.

Step 5 Make sure the Print Server is listed under the **Device Name** and click on **Change IP Address**.



Step 6 In the **IP Address** field, enter a valid IP address, subnet mask, and default gateway that matches your local area network.

For example: If your computer's **IP Address** is **192.168.1.100**, enter the same three numbers: **192.168.1** in the corresponding fields.

```
C:\WINDOWS\system32\cmd.exe
Microsoft Windows XP [Version 5.1.2600]
(C) Copyright 1985-2001 Microsoft Corp.

C:\Documents and Settings\Administrator>ipconfig

Windows IP Configuration

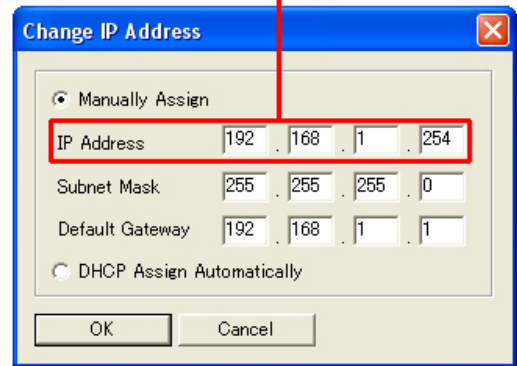
Ethernet adapter Local Area Connection:

    Connection-specific DNS Suffix . :
    IP Address . . . . . : 192.168.1.100
    Subnet mask . . . . . : 255.255.255.0
    Default Gateway . . . . . : 192.168.1.1

C:\Documents and Settings\Administrator>
```

IP Address of your computer

IP Address of the Print Server



Note: You can leave the last IP Address number **254** as is unless another network device (i.e. the **Default Gateway**) is already using that number. If another network device is already using **254**, then change it to another number that is currently not in use (preferably **200 - 253**).

For the **Subnet Mask** and **Default Gateway** fields, enter the same number as the TCP/IP setting of your computer.

```
C:\WINDOWS\system32\cmd.exe
Microsoft Windows XP [Version 5.1.2600]
(C) Copyright 1985-2001 Microsoft Corp.

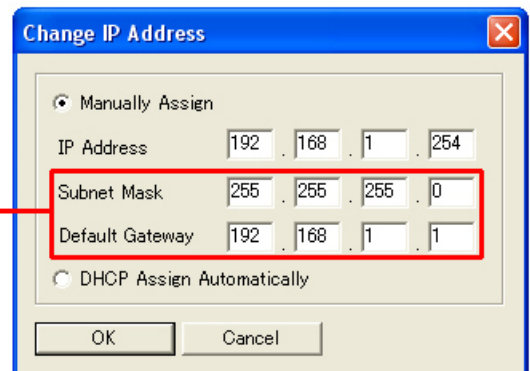
C:\Documents and Settings\Administrator>ipconfig

Windows IP Configuration

Ethernet adapter Local Area Connection:

    Connection-specific DNS Suffix . :
    IP Address . . . . . : 192.168.1.100
    Subnet Mask . . . . . : 255.255.255.0
    Default Gateway . . . . . : 192.168.1.1

C:\Documents and Settings\Administrator>
```



Step 7 Click **OK**.

Step 8 Close the PS Utility program.

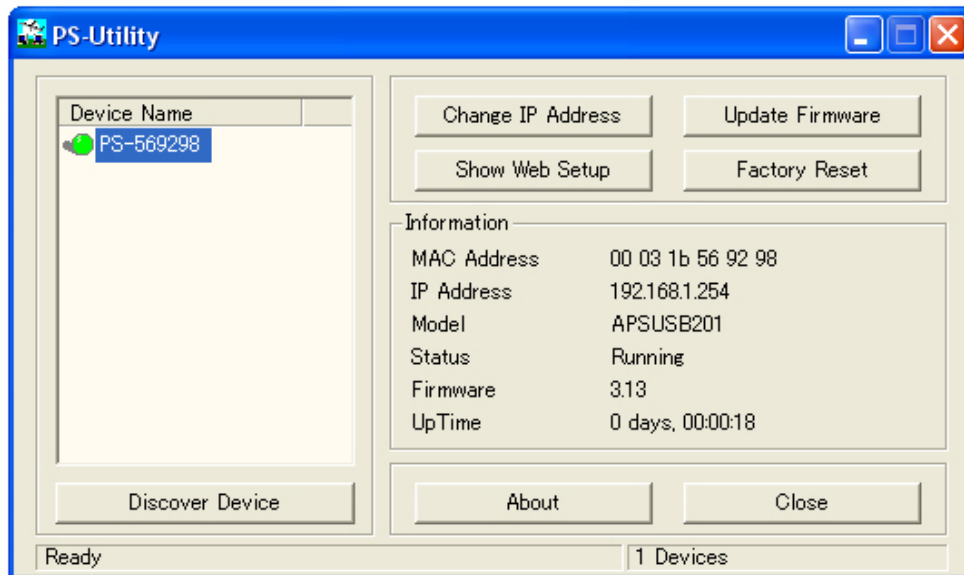
Section 4

Verifying Network Connection

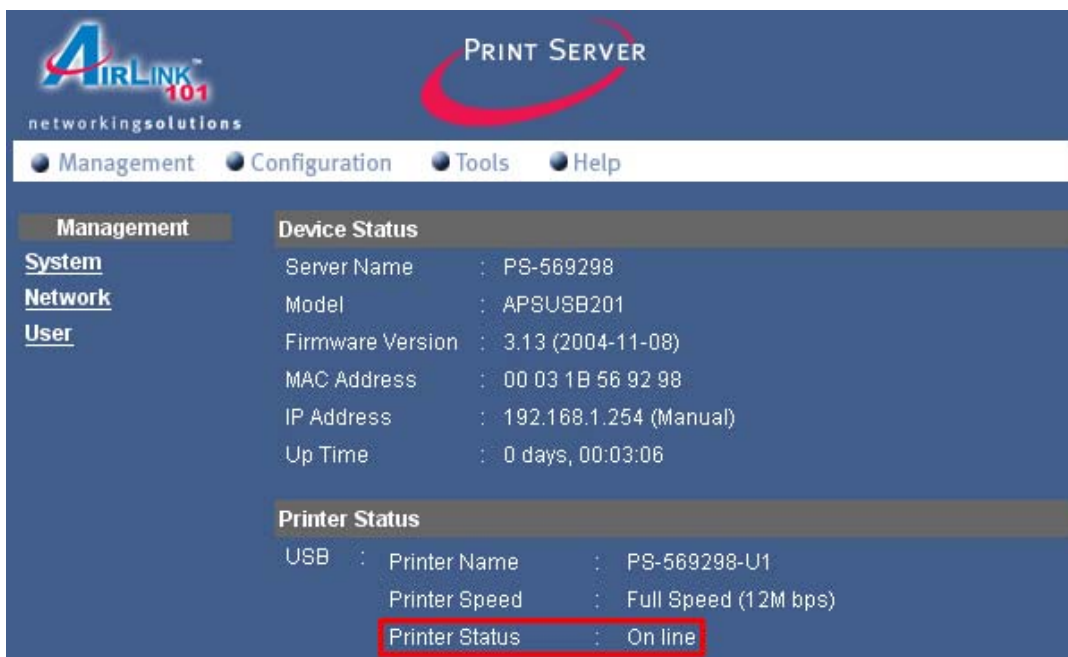
Step 1 Run the PS Utility by going to **Start, (All) Programs, PS Utility, PS Utility v2.00.**

Step 2 Make sure the Print Server is detected under the **Device Name.**

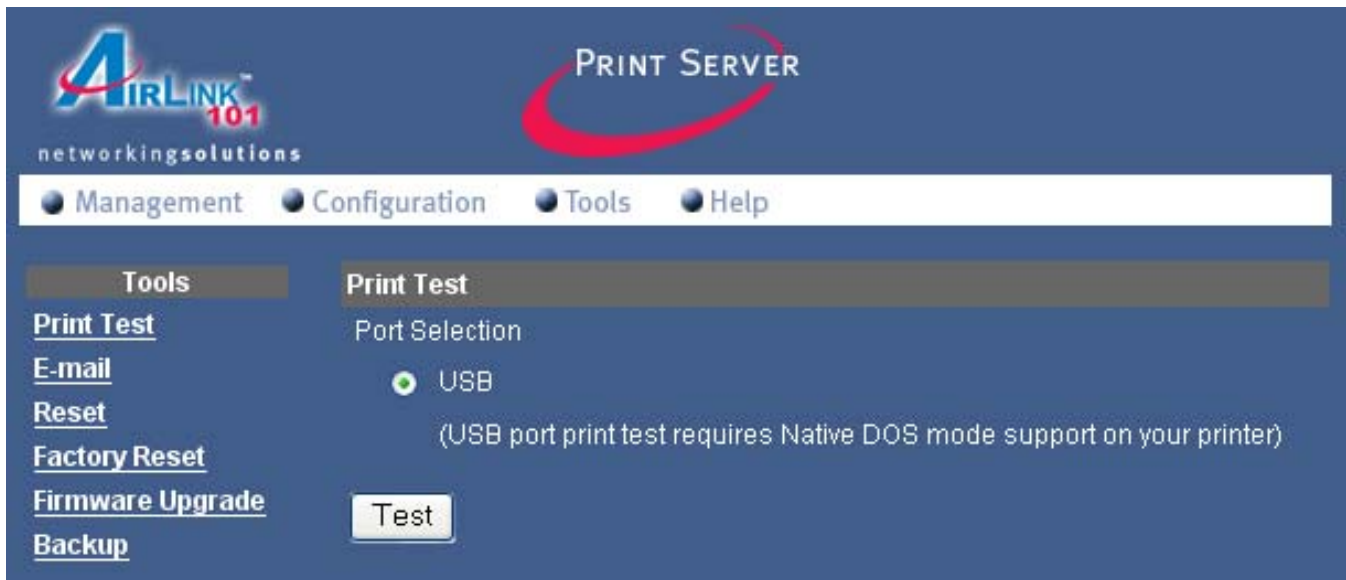
Step 3 Click on **Show Web Setup** to display the Print Server's **Web Configuration Utility.**



Step 4 Make sure the **Printer Status** displays **On line.**



Step 5 Click on the **Tools** link and select the port your printer is connected to and click the **Test** button. The Print Server will perform a low-level print test, bypassing the operating system layer.



Note: Your printer should print out a test page. If not, verify that the printer is powered on and all cables are securely connected and try again. If the printer still fails to print a test page, please check the printer compatibility list on our web site at www.airlink101.com for a list of compatible printers. If your printer is not on the list, it may not be compatible with the Print Server.

Step 6 Once the printer successfully prints out a test page, you may close the web browser and proceed to the next section.

Section 5

Running PS Wizard

Warning: Make sure you have installed the printer driver locally on every computer that will use the print server in your network before running the PS Wizard. Otherwise, the PS Wizard will not run properly. Be sure to run the PS Wizard on all the computers that will use the print server in your network.

Step 1 Insert the provided CD and wait for the setup menu to appear.

Step 2 Click on **PS Wizard**.

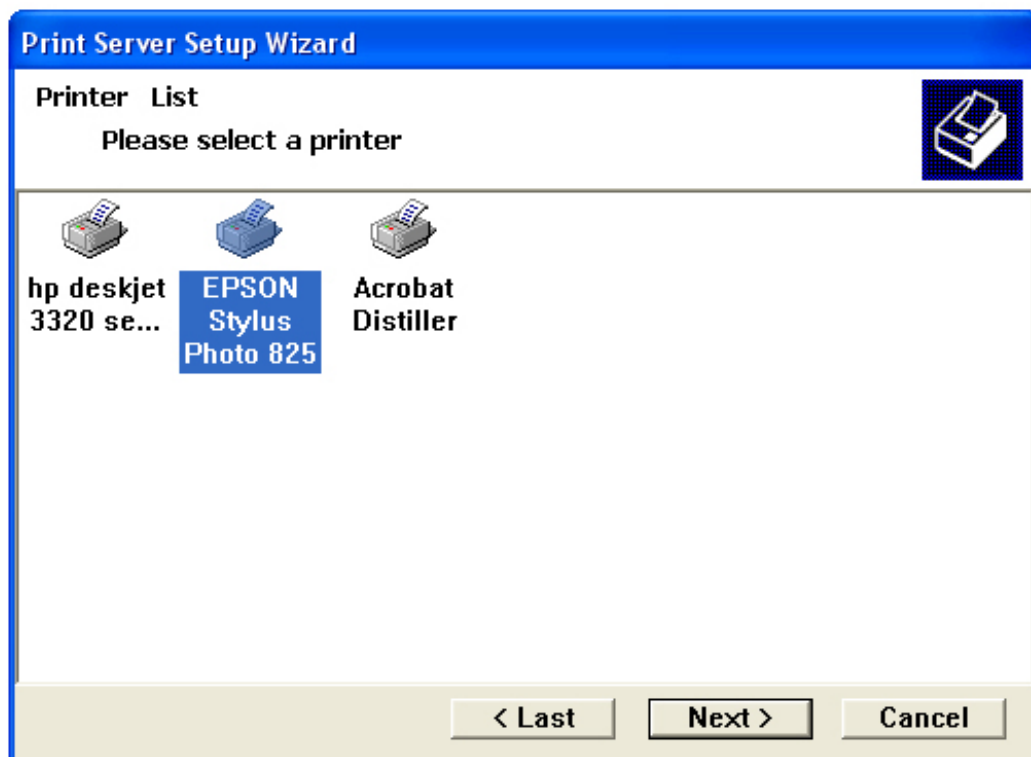


Note: If the setup menu does not appear automatically after you have inserted the CD, go to **Start, Run,** type **D:\autorun.exe** (where **D** is the letter of your CD drive) and click **OK**.

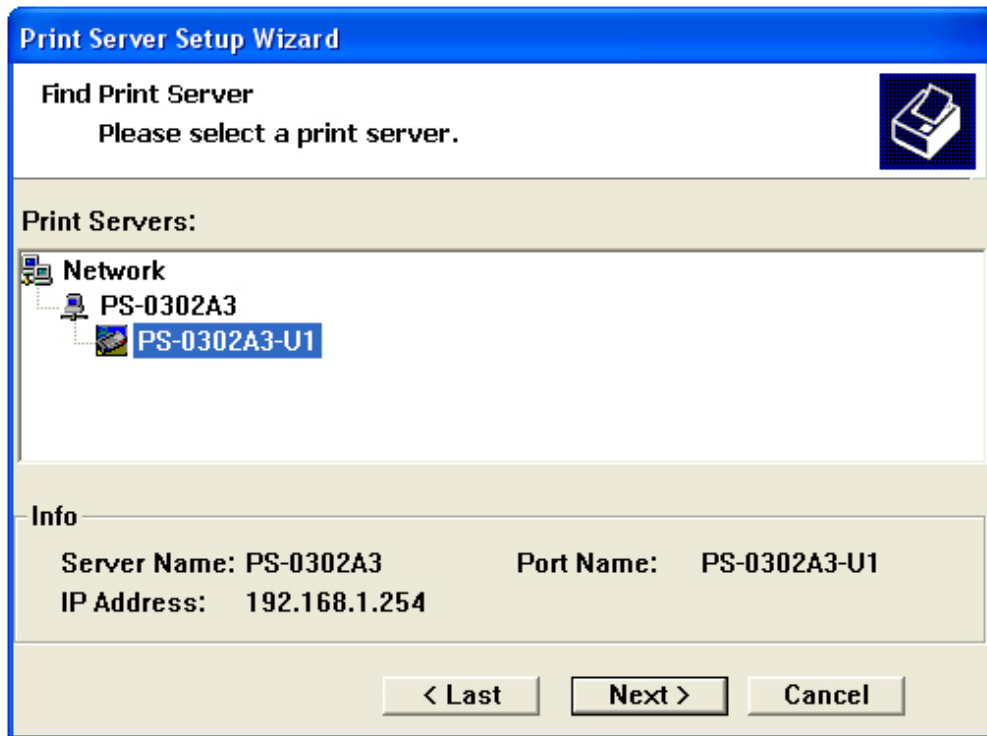
Step 3 Click **Next**.



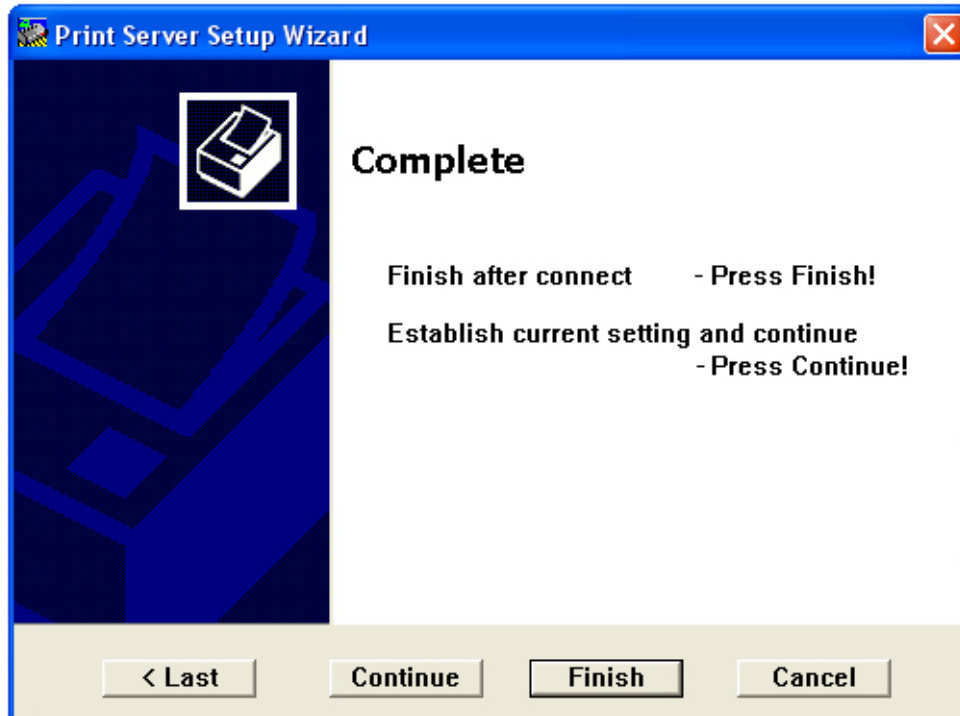
Step 4 Select the printer that is connected to the print server and click **Next**.



Step 5 Double-click on the **Print Server Name**, select the **Printer Port Name**, and click **Next**.



Step 6 Click **Finish** and **OK**. (For Windows 95/98/ME, you'll need to reboot the computer).



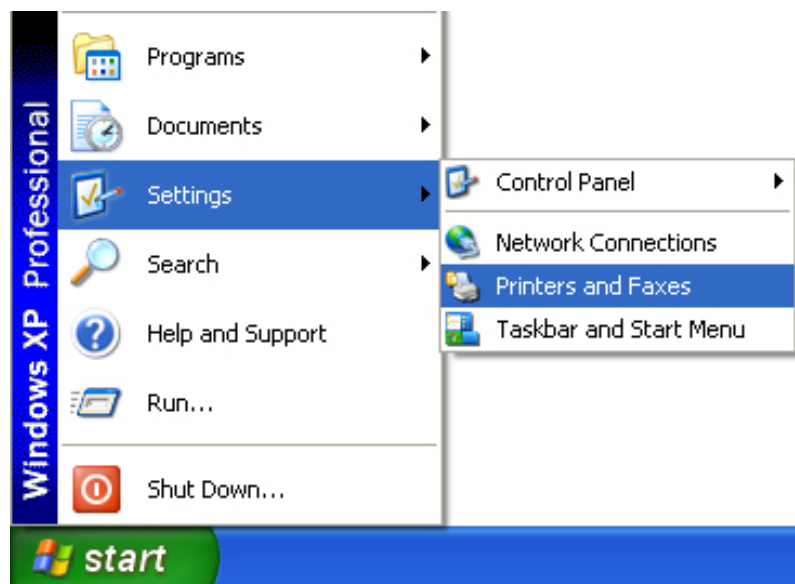
Step 7 Run the **PS Wizard** on all the computers in your network that will use the print server.

Section 6

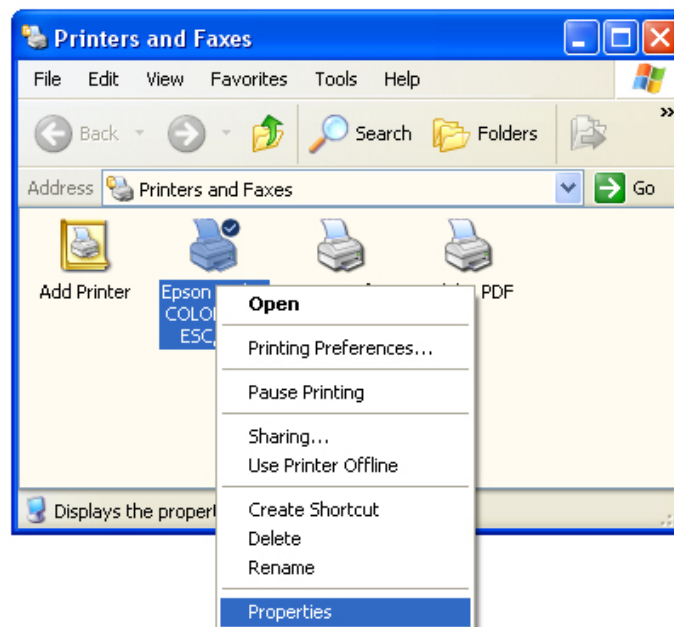
Performing Operating System Print Test

The final step in setting up the Print Server is to perform an operating system print test. Please note that the instructions below are for Windows XP, but the steps are similar for all the other Windows operating systems.

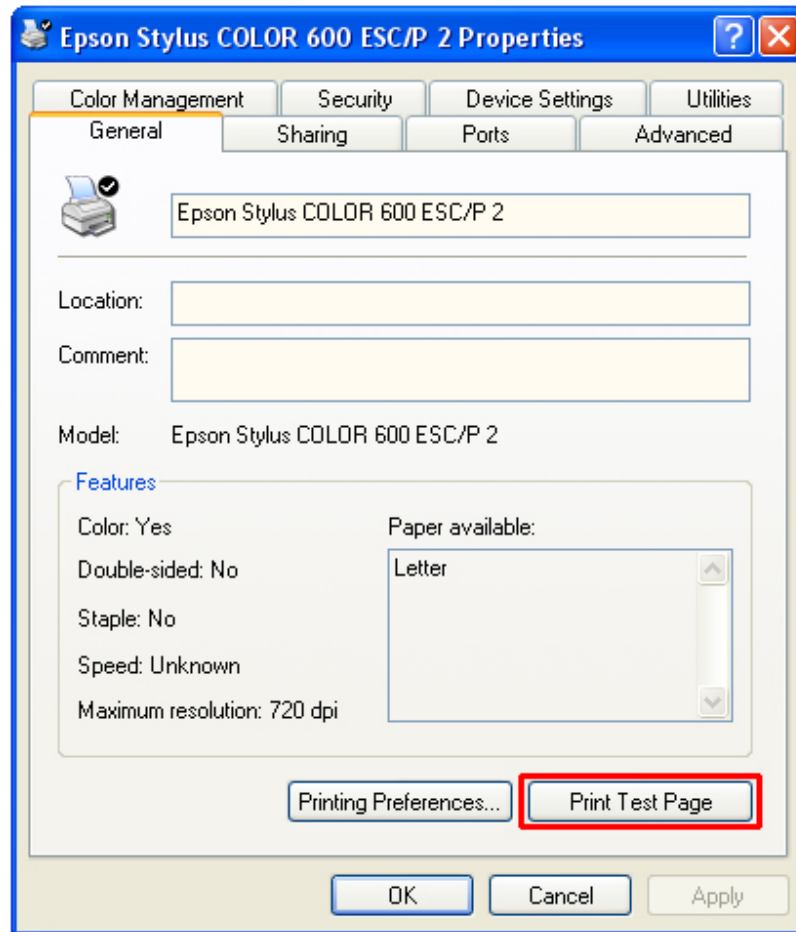
Step 1 Click on **Start, Settings, Printers and Faxes.**



Step 2 Right-click on the printer that is connected to the Print Server and select **Properties.**



Step 3 Click on the **Print Test Page** button. Windows should print out a test page.



You have successfully configured the Print Server for printing.

For more information on how to use the Web Configuration Utility or setup for Mac OS, please refer to the User's Manual in the provided CD.

Section 7

Technical Support

E-mail: support@airlink101.com

Toll Free: 1-888-746-3238

Web Site: www.airlink101.com

Copyright © 2004 AirLink101. All rights reserved. AirLink101, the stylized AirLink101 logo, specific product designations, and all other words and logos that are identified as trademarks and/or service marks are, unless noted otherwise, the trademarks and service marks of AirLink101. All other product or service names are the property of their respective holders. AirLink101 products are protected under numerous U.S. and foreign patents and pending applications, mask work rights, and copyrights.

Free Manuals Download Website

<http://myh66.com>

<http://usermanuals.us>

<http://www.somanuals.com>

<http://www.4manuals.cc>

<http://www.manual-lib.com>

<http://www.404manual.com>

<http://www.luxmanual.com>

<http://aubethermostatmanual.com>

Golf course search by state

<http://golfingnear.com>

Email search by domain

<http://emailbydomain.com>

Auto manuals search

<http://auto.somanuals.com>

TV manuals search

<http://tv.somanuals.com>