



Quick Installation Guide

Wireless N 300 Green Router

Model # AR686W



Ver. 1A

Package Contents

Before you begin the installation, please check the items in the package:

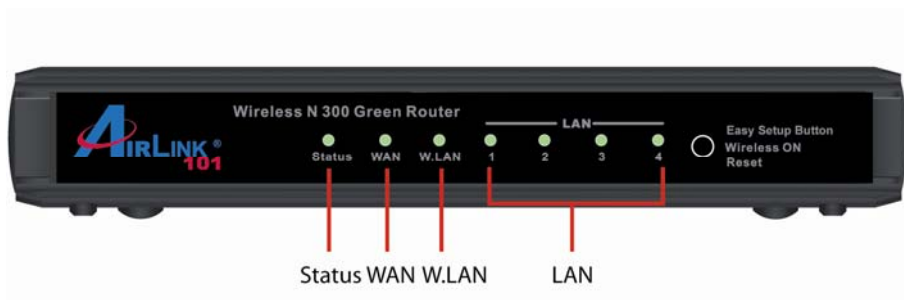
- Wireless N 300 Green Router with 2 un-detachable Antennas
- Power Adapter
- Setup CD
- Quick Installation Guide
- Ethernet Cable

Section 1

This Quick Installation Guide only provides basic instructions. For detailed information on using this product, please refer to the User's Manual on the supplied CD.

Hardware Introduction

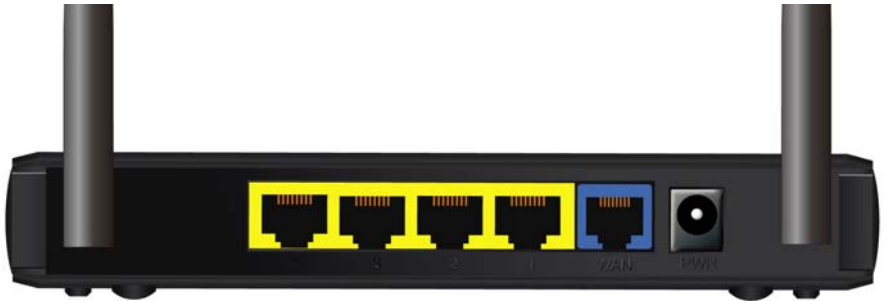
A. Front Panel



LEDs	Status	Description
Status	Blinking (Green)	Device status is working properly
WAN	On (Green)	Network device is connected
	Blinking	Data access
	Off	Not connected
LAN 1~4	On (Green)	Network device is connected
	Blinking	Data access
	Off	Not connected
Wireless LAN	On (Green)	Wireless feature is enabled
	Blinking Slowly	Data access
	Blinking Rapidly	Device is in WPS™ PBC mode
	Off	Wireless feature is disabled

Button	Description
Easy Setup Button (WPS compatible)	When Wireless is ON, press this button and release it immediately to start security synchronization function (WPS compatible).
Wireless On	Press this button and hold it for about 1 sec. to turn on/off router's wireless radio.
Reset	Press this button and hold for 4 seconds to restore factory default settings.

B. Back Panel



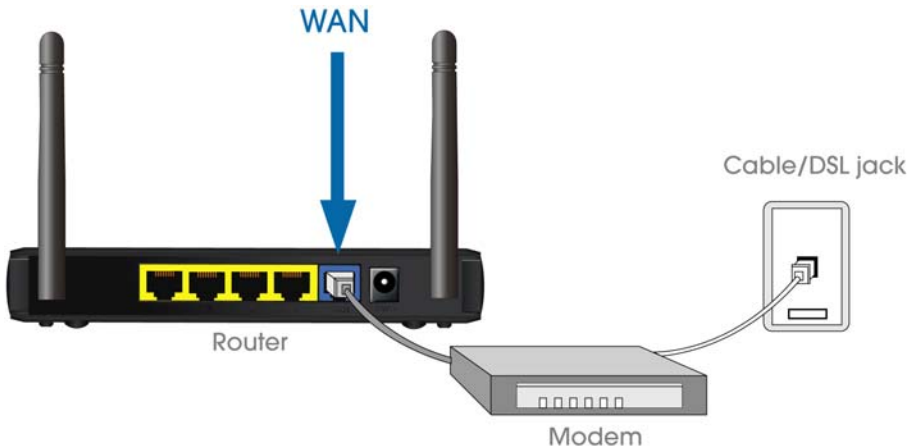
Item Name	Description
Antennas	These antennas are un-detachable 1.8dBi dipole antennas.
1 - 4	Local Area Network (LAN) ports 1 to 4.
WAN	Wide Area Network (WAN / Internet) port.
PWR	Power connector, connects to A/C power adapter.

Section 2

Configuring the Router

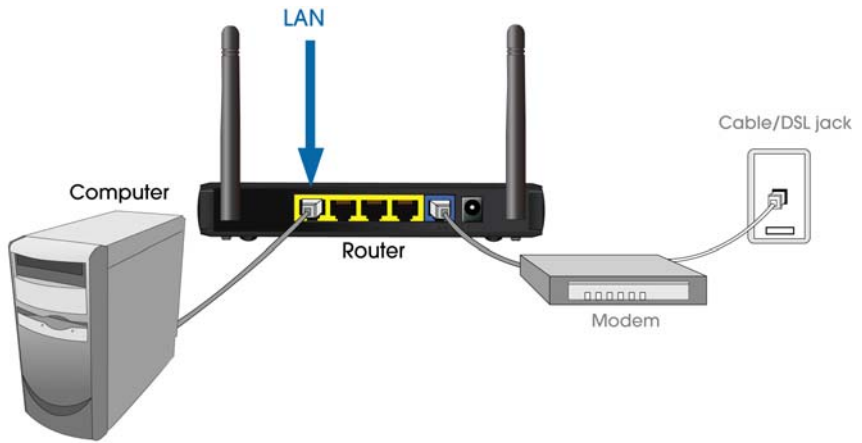
Note: Prior to connecting the router, be sure to power off your computer, DSL/Cable modem, and the router.

Step 1 Connect one end of a network cable to the **WAN** port of the router and connect the other end of the cable to the DSL/Cable modem.

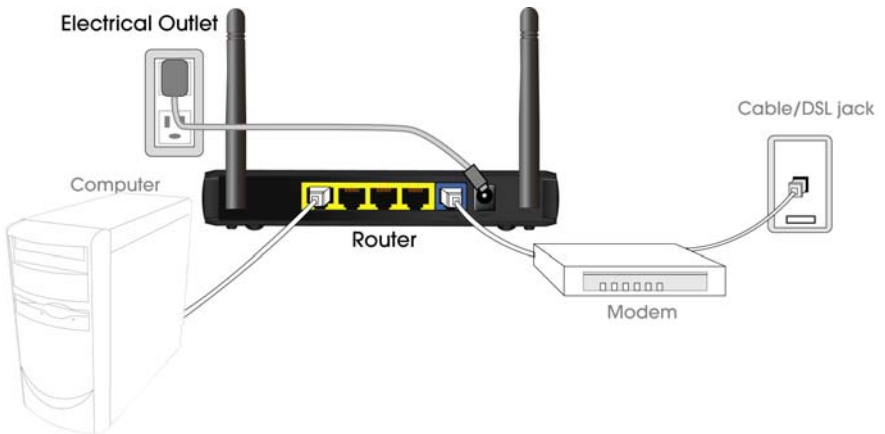


Step 2 Power on the modem.

Step 3 With another network cable, connect one end of the cable to your computer's **Ethernet** port and connect the other end to one of the **LAN** ports of the router, as shown in the following figure. (After setup finishes, you can remove the network cable between the computer and router if you want to use wireless connection.)



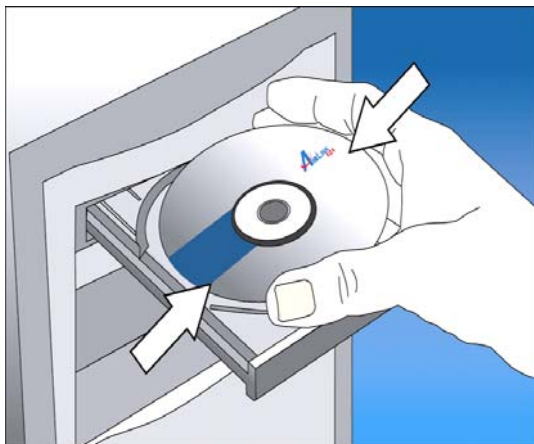
Step 4 Plug the power adapter to the router and connect it to an electrical outlet.



Step 5 Power on your computer.

Step 6 Check LEDs of the router: make sure **Status**, **WAN**, **W.LAN**, and the **LAN** port that the computer is connected to are ON. If one or more LEDs are not on, please refer to Section 4 Troubleshooting.

Step 7 Insert the Setup CD into CD-ROM drive.

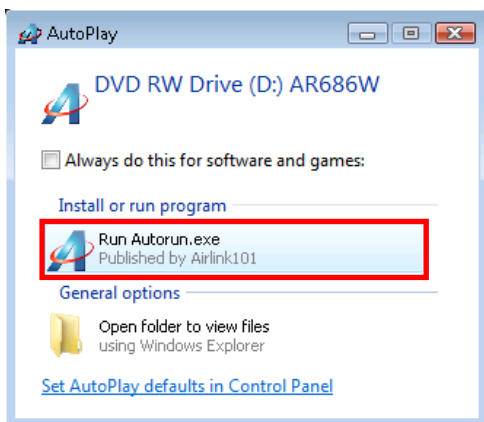


Step 8 When the autorun menu pops up, click EZ Setup Wizard.

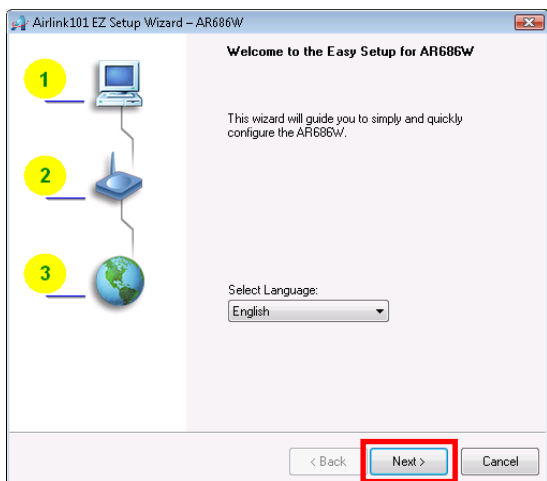


*Note: If the autorun menu does not show up on the screen, please go to **Computer** → **CDROM drive** → **Wizard** folder, and execute “**EZWizard.exe**”.*

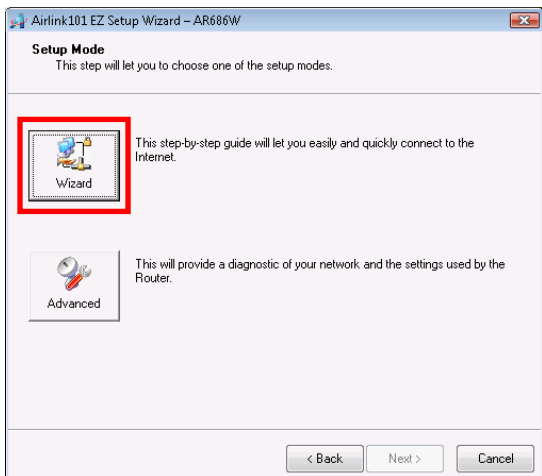
Windows 7 and Vista users: an AutoPlay window pops up on screen, please make sure you give permission to run the setup program by clicking **Autorun.exe**.



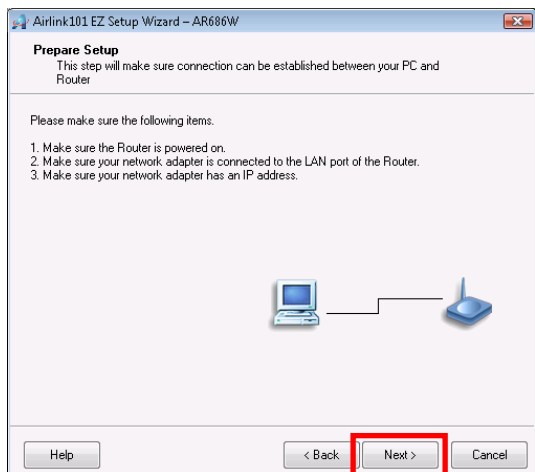
Step 9 Select your language and click **Next**.



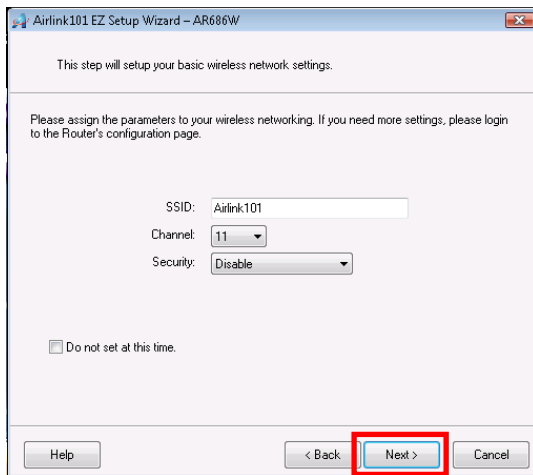
Step 10 Click on **Wizard**.



Step 11 Please make sure your computer is connected to the one of the four LAN ports of the router, and your modem is connected to the WAN port of the router. Click **Next** to configure the basic wireless settings



Step 12 The default wireless encryption setting is disabled. It is suggested to select **WPA2-PSK** for best wireless security.



Airlink101 EZ Setup Wizard – AR686W

This step will setup your basic wireless network settings.

Please assign the parameters to your wireless networking. If you need more settings, please login to the Router's configuration page.

SSID: Airlink101

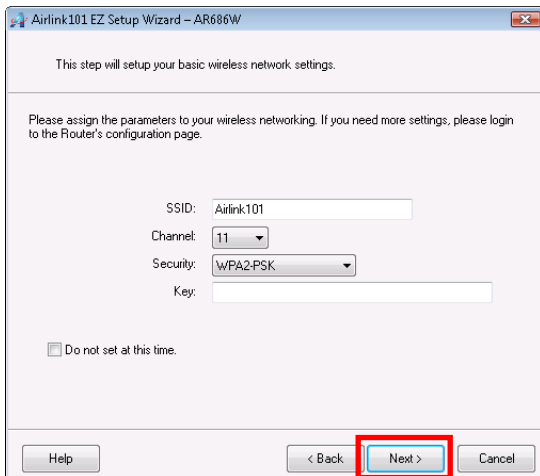
Channel: 11

Security: Disable

Do not set at this time.

Help < Back **Next >** Cancel

Step 13 Configure the SSID (wireless network name, i.e. Airlink101), Channel, Security and Key. It is suggested to select **WPA2-PSK** for best wireless security. Enter 8~63 characters into Key box, then click **Next**.



Airlink101 EZ Setup Wizard – AR686W

This step will setup your basic wireless network settings.

Please assign the parameters to your wireless networking. If you need more settings, please login to the Router's configuration page.

SSID: Airlink101

Channel: 11

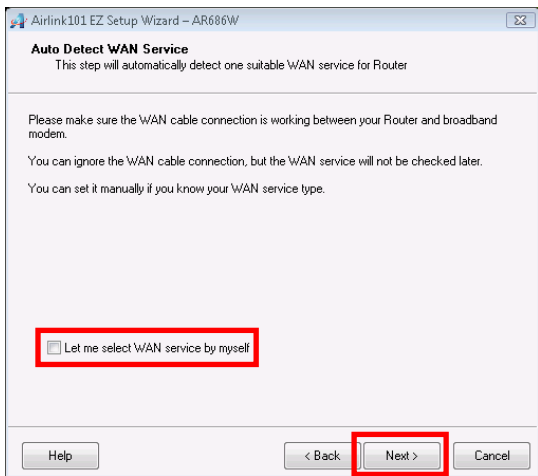
Security: WPA2-PSK

Key:

Do not set at this time.

Help < Back **Next >** Cancel

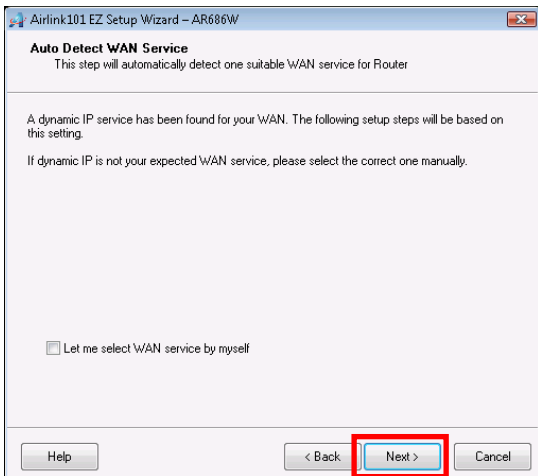
Step 14 Click **Next** and the wizard will detect your WAN settings, or you can select your WAN type manually by checking “Let me select WAN service by myself”.



Step 15 Enter the settings based on your WAN service type.

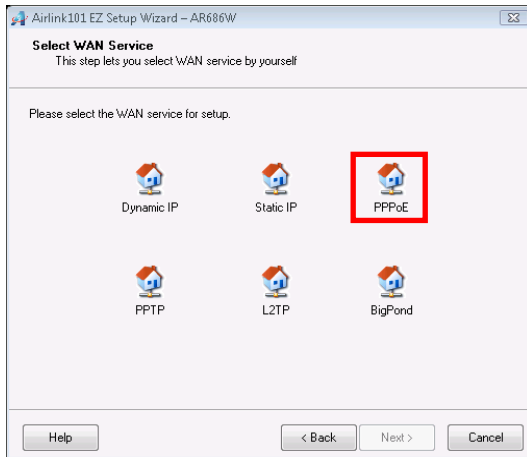
Cable (Dynamic IP)

If you are using cable Internet service, your WAN type is “Dynamic IP”. You do not need to configure anything here, and then click **Next** to continue.

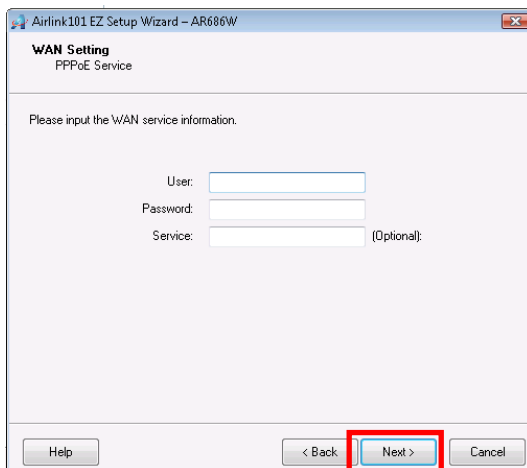


DSL (PPPoE or Dynamic IP)

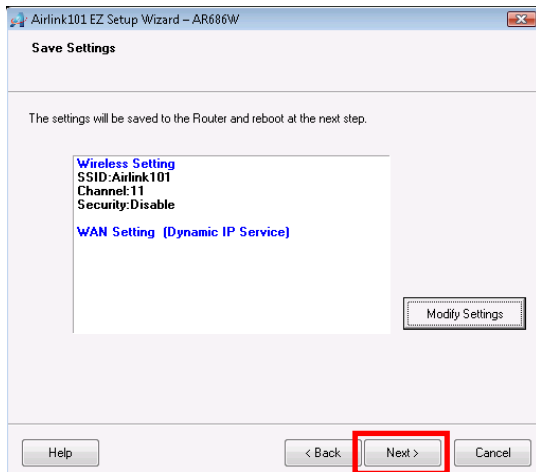
For DSL users, your WAN type is either PPPoE or Dynamic IP. You can try both types and determine which one works for you.



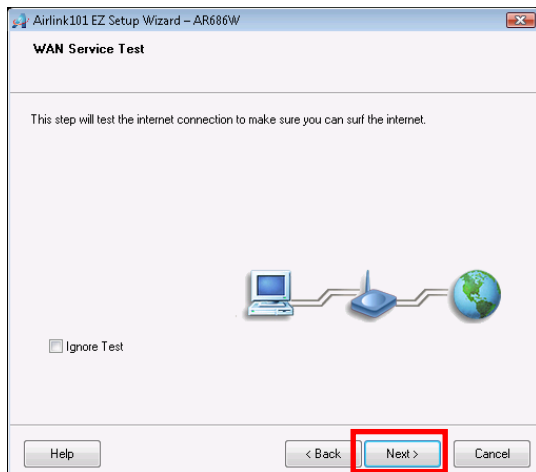
For PPPoE settings, please enter the username and password provided by your ISP (Internet Service Provider). **Note:** Depending on the settings provided by your ISP, you may need to include the domain name with your username. **Example: username@sbcglobal.net**



Step 16 Verify the settings you have configured. Click **Next** to save the settings and reboot the router. This will take about 30 seconds.

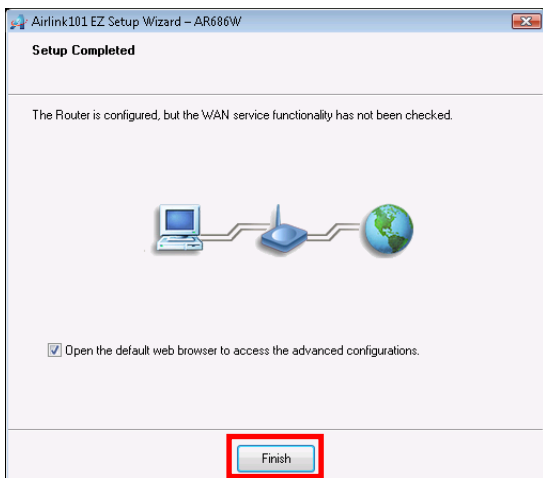


Step 17 Click **Next** to test the Internet Connection, or you can ignore the test, just open the Internet browser and verify if you are connected to the Internet.



If you cannot connect to the Internet, please go to **Section 4, Troubleshooting**.

Step 18 After the WAN service test completed, click **Finish**. The wizard will open the web configuration page for the router automatically unless you uncheck the checkbox below “Open the default web browser to access the advanced configuration”.



You will see the status of the router on the web configuration page brought up by the web browser. Valid numbers should be assigned to IP Address, Subnet Mask and Gateway, instead of all 0's.

System Status

[HELP]

Item	WAN Status	Sidenote
Remaining Lease Time	00:59:07	<input type="button" value="Renew"/>
IP Address	192.168.1.72	<input type="button" value="Release"/>
Subnet Mask	255.255.255.0	
Gateway	192.168.1.1	
Domain Name Server	192.168.1.1, 206.13.28.12	
MAC Address	00-50-18-21-D6-C7	<input type="button" value="Edit"/>

Wireless Status

Item	WLAN Status	Sidenote
Wireless mode	Enable	
SSID	Airlink101	
Channel	11	
Security	None	
MAC Address	00-50-18-21-D6-C8	<input type="button" value="Edit"/>

Statistics Information

Statistics of WAN	Inbound	Outbound
Octets	53972	1188
Unicast Packets	8	5
Non-unicast Packets	213	5

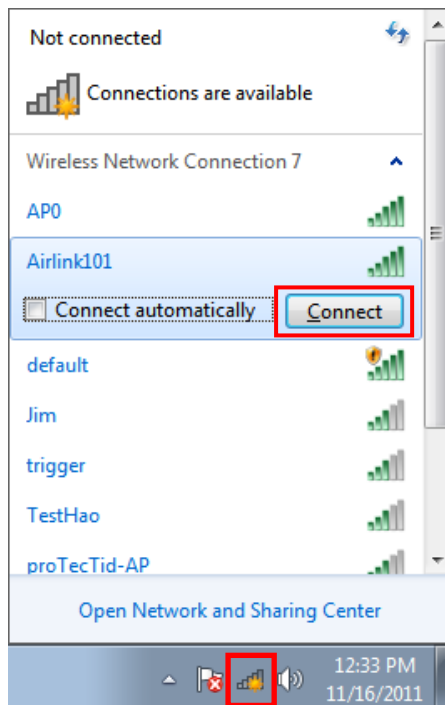
Congratulations! Your router is configured successfully.

Section 3

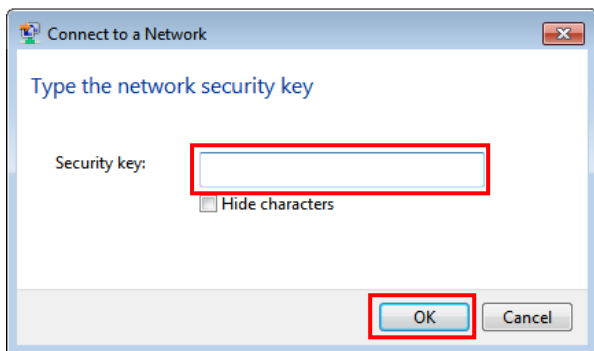
Connect to the Router Wirelessly

You must configure your wireless computer in order to establish a wireless connection to the router. In this section, you can find the instructions of how to connect to the router wirelessly with your **Windows 7** computer. You can also refer to the manual of your wireless adapter on how to connect to the router.

Step 1 Click on the wireless icon in the system tray on your desktop. A list of available network will pop up. Select the one you want to connect to and click **Connect**.



Step 2 Enter the key you configured in **Step 13** if you have enabled the wireless security, then click **OK**. The wireless connection should be now established.



Section 4

Troubleshooting

A. Diagnosing problems from LED indicators:

1. If the WAN LED is off, but Status LED is on, please check if the modem is powered on, and the network cable from the modem is plugged into the WAN port of the router.
2. If the Wireless LED is off, but Status LED is on, the wireless function might be turned off. Please press the **Wireless On** button on the front panel to turn on the wireless function.
3. If the LAN LED is off, but Status LED is on, please make sure:
 - I. The network cable plugged into the Ethernet port of your computer is connected to one of the LAN ports (1~4) of the router.
 - II. The Ethernet adapter's indicator on your computer is on, otherwise it may be disabled. Please enable the Ethernet adapter on your computer.

B. If you cannot connect to the Internet, please try the solutions below:

1. Make sure you can connect to the Internet with the Cable/DSL modem directly plugged into your computer.
2. If you are using DSL (PPPoE) Internet service, please verify with your ISP that the username and password you entered into the router are correct.
3. If you are using Cable Internet service, please do the following steps:
 - Step 1** Power off the Cable/DSL modem, router, and computer and wait for **1 minute**.
 - Step 2** Turn on the Cable/DSL modem and wait for the lights on the modem to settle down.
 - Step 3** Turn on the router and wait for the lights on the router to settle down.

Step 4 Turn on the computer.

C. Your wireless adapter is not connected to the Router:

1. Please make sure your wireless adapter is connected the Router with the correct security key you configured at **Step 13**.
2. Please make sure your wireless adapter supports the security mode (WPA2-PSK/AES) you configured for the Router at **Step 13**. If your wireless adapter does not support WPA2-PSK; you can change the Security to WEP, and configure a 10-digit HEX key (0~9, a~f).

Section 5

Technical Support

E-mail: support@airlink101.com

Toll Free: 1-888-746-3238

Website: www.airlink101.com

*Theoretical maximum wireless signal rate derived from IEEE standard 802.11 specifications. Actual data throughput will vary. Network conditions and environmental factors, including volume of network traffic, building materials and construction, mix of wireless products used, radio frequency interference (e.g., cordless telephones and microwaves) as well as network overhead lower actual data throughput rate. Compatibility with 802.11n devices from other manufacturers is not guaranteed. Specifications are subject to change without notice. Photo of product may not reflect actual content. All products and trademarks are the property of their respective owners. Copyright© 2011 Airlink101®

**Wi-Fi® is a registered trademark and WPS™ is a trademark of the Wi-Fi alliance®

Free Manuals Download Website

<http://myh66.com>

<http://usermanuals.us>

<http://www.somanuals.com>

<http://www.4manuals.cc>

<http://www.manual-lib.com>

<http://www.404manual.com>

<http://www.luxmanual.com>

<http://aubethermostatmanual.com>

Golf course search by state

<http://golfingnear.com>

Email search by domain

<http://emailbydomain.com>

Auto manuals search

<http://auto.somanuals.com>

TV manuals search

<http://tv.somanuals.com>