



Quick Installation Guide

SkyIPCam747W **Wireless Night Vision Pan & Tilt Network Camera**

Model # AICN747W



Ver. 1A

Package Contents:

- Wireless Night Vision Pan & Tilt Network Camera
- Antenna
- Wall Mount Kit
- GPIO Connector
- Power Adapter
- Ethernet Cable (Cat.5)
- Utility CD
- Quick Installation Guide

Section 1

This Quick Installation Guide only provides basic instructions. For detailed information on using this product, please refer to the User's Manual on the supplied CD.

Getting Started

Step 1 Connect one end of the Ethernet cable to the IP Camera and connect the other end to one of the LAN ports on your router or switch.

Step 2 Power on the IP Camera by connecting one end of supplied power adapter to the power jack of the Camera and connecting the other end to the electrical outlet.

Step 3 Verify that the yellow light (Power) is solid and the green light (Link) is blinking.

Section 2

Installing the SkyIPCam Utility

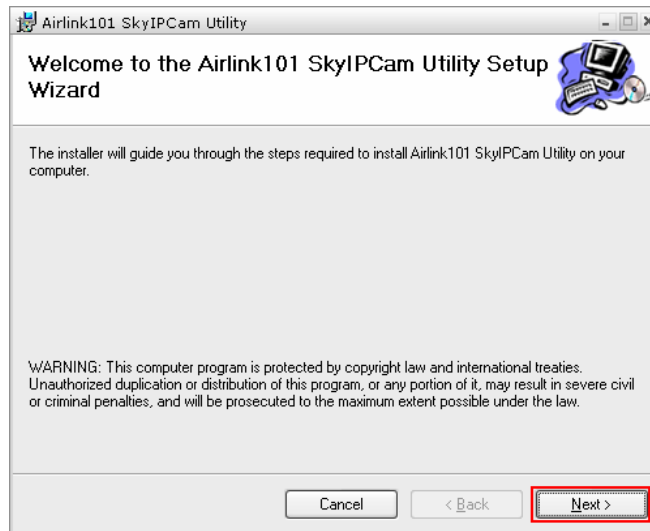
Step 1 Insert the provided CD and wait for the auto-run screen to appear.

Step 2 Click on **Install SkyIPCam Utility**.

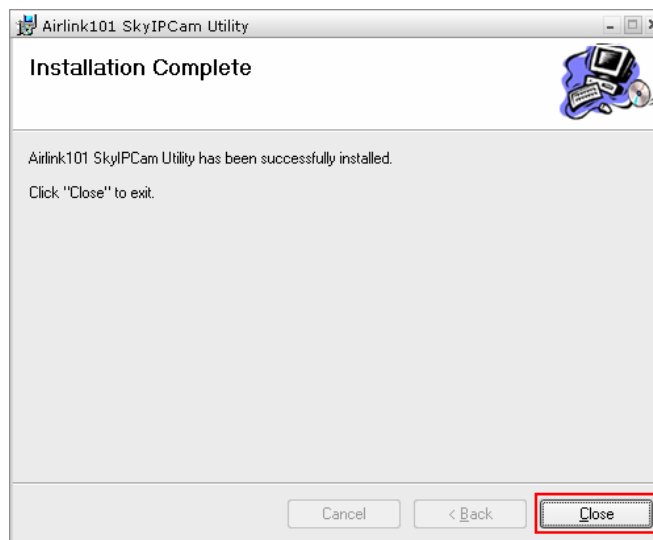


Note: If the auto-run screen does not appear automatically, go to **Start, Run,** type: **D:\Utility\Setup.exe** (where **D** is the letter of your CD drive) and click **OK**.

Step 3 Keep clicking **Next** on the following screens.



Step 4 Click **Close** to complete the installation.



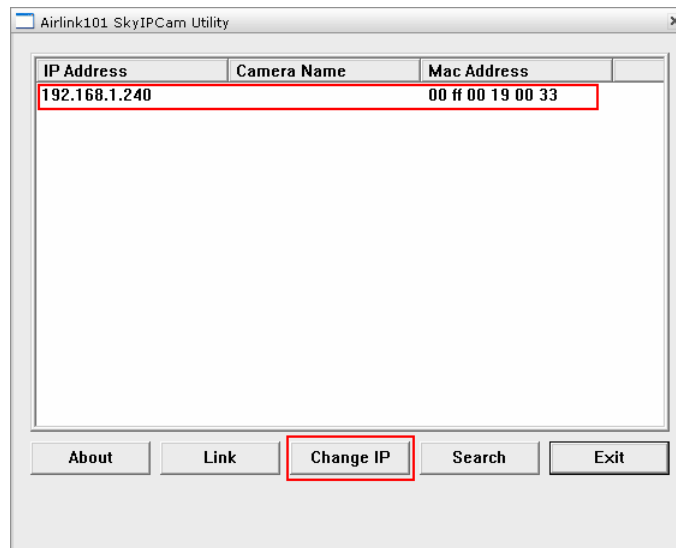
Section 3

Using the SkyIPCam Utility

Step 1 Go to **Start > (All) Programs > AirLink101 > AirLink101 SkyIPCam Utility**



Step 2 Select the IP Camera you want to configure from the list and click on the **Change IP** button.



Note: If the Camera's IP address does not show up in the window, make sure the camera is properly connected to the same network as your computer is, and then click on the **Search** button.

Step 3 You may simply accept the suggested **Static IP**, or you can manually change the last 3-digit number of the IP Address, in case that the suggested one has already been used by another device in the same network. Another option is that if your router's DHCP server is enabled, you can select **DCHP**, so the router will automatically assign a dynamic IP address to your camera.

Enter **“admin”** for both **ID** and **password**, and click **Change**.

Change IP Address

Static IP

IP Address: 192 . 168 . 1 . 240

Submask: 255 . 255 . 255 . 0

Default gateway: 192 . 168 . 1 . 1

DHCP

Administrator ID & Password

ID:

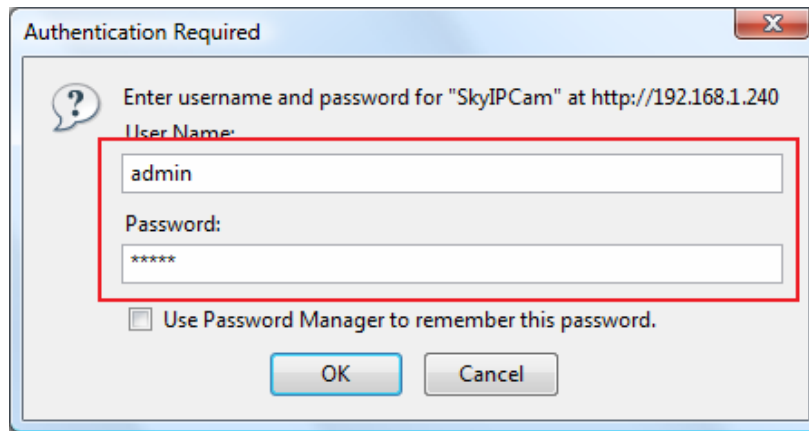
Password:

Step 4 Once the utility has saved changes, it will return to the original screen. Select your camera from the list and click **Link**.

Airlink101 SkyIPCam Utility

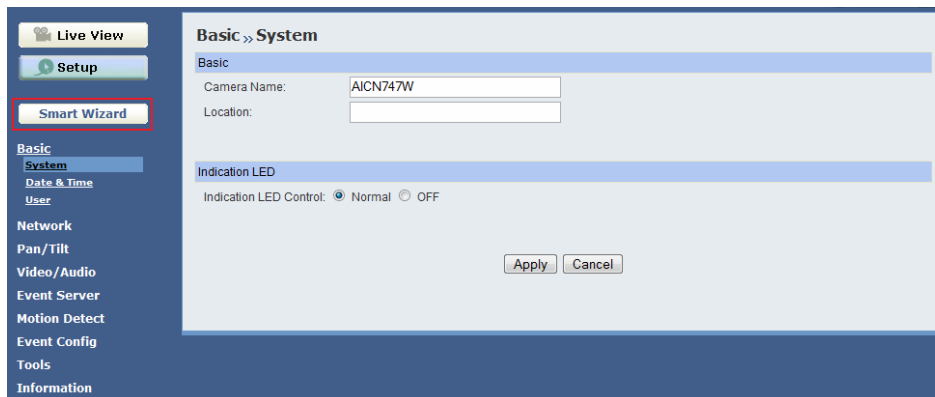
IP Address	Camera Name	Mac Address
192.168.1.240		00 ff 00 19 00 33

Step 5 When you are prompted for the username and password, enter “admin” for both **User name** and **Password**, and click **OK**.



The image shows a dialog box titled "Authentication Required" with a close button (X) in the top right corner. The main text reads: "Enter username and password for 'SkyIPCam' at http://192.168.1.240". Below this, there are two input fields: "User Name:" containing the text "admin" and "Password:" containing six asterisks "*****". A red rectangular box highlights both input fields. Below the password field is a checkbox labeled "Use Password Manager to remember this password." which is currently unchecked. At the bottom of the dialog are two buttons: "OK" and "Cancel".

Step 6 The camera viewing window will appear. Click on **Setup**, and then click on **Smart Wizard**.



The image shows a web-based configuration interface for a camera. On the left is a vertical navigation menu with buttons for "Live View", "Setup", and "Smart Wizard" (the last one is highlighted with a red box). Below these are several menu items: "Basic", "System", "Date & Time", "User", "Network", "Pan/Tilt", "Video/Audio", "Event Server", "Motion Detect", "Event Config", "Tools", and "Information". The main content area is titled "Basic >> System" and contains two sections: "Basic" with fields for "Camera Name:" (containing "AICN747W") and "Location:" (empty), and "Indication LED" with a radio button control for "Indication LED Control:" (with "Normal" selected and "OFF" unselected). At the bottom right of the main area are "Apply" and "Cancel" buttons.

Step 7 You may change the default **Camera Name** and enter a name for the **Location** if you like. Then enter **“admin”** for both **Admin Password** and **Confirm Password**. Click **Next**.

Welcome to the Smart Wizard. This wizard will help you quickly set up the Network Camera to run on your network.

Camera Setting

Camera Name: Enter a descriptive name for the camera. For example, camera 1.

Location: Enter a descriptive name for the location used by the camera. For example, meeting room 1.

Admin Password/Confirm Password: Enter the administrator password twice to set and confirm the password to access the camera's Configuration Utility.

Camera Name: AICN747W

Location:

Admin Password:

Confirm Password:

Next > Cancel

Step 8 You can change the camera's IP settings in the below window. If you have done this in Step 3, click **Next** and go to the next step.

IP Setting

DHCP: Select this option when your network uses the DHCP server. When the camera starts up, it will be assigned an IP address from the DHCP server automatically.

Static IP: Select this option to assign the IP address for the camera directly.

- IP Address: For example, enter the default setting 192.168.1.240
- Subnet Mask: For example, enter the default setting 255.255.255.0
- Default Gateway: For example, enter the default setting 192.168.1.1
- Primary/Secondary DNS: Enter the DNS that are provided by your ISP.

PPPoE: Select this option when you use a direct connection via the ADSL modem. You should have a PPPoE account from your Internet service provider. Enter the user name and password in the following boxes. Please note that once the camera get an IP address from the ISP as starting up, it automatically sends a notification email to you. Therefore, when you select PPPoE as your connecting type, you have to set up the email configuration in next step.

DHCP

Static IP

IP: 192 . 168 . 1 . 240

Subnet Mask: 255 . 255 . 255 . 0

Default Gateway: 192 . 168 . 1 . 1

Primary DNS: 192 . 168 . 1 . 1

Secondary DNS:

PPPoE

User Name:

Password:

< Prev Next > Cancel

Step 9 If you would like to set up email alerts that you can receive in the future, enter your email information here. You can get this information from your internet service provider. You can also set this up at a later time. Click **Next**.

Email Setting

SMTP Server Address: Enter the mail server address. For example, mymail.com.

Sender Email Address: Enter the email address of the user who will send the email. For example, John@mymail.com.

Authentication Mode: If the mail server needs to login, please select SMTP.

Sender User Name: Enter the user name to login the mail server.

Sender Password: Enter the password to login the mail server.

Receiver #1 Email Address: Enter the first email address of the user who will receive the email.

Receiver #2 Email Address: Enter the second email address of the user who will receive the email.

SMTP Server Address:

Sender Email Address:

Authentication Mode: None SMTP

Sender User Name:

Sender Password:

Receiver #1 Email Address:

Receiver #2 Email Address:

< Prev **Next >** Cancel

Step 10 Enter the wireless information according to your wireless router's (or access point's) setting if you would like to connect the camera wirelessly to the network. You can log in to the router's (or AP's) web configuration pages to get the SSID and encryption details. Click **Next**.

Wireless Networking

Network ID(SSID): default

Wireless Mode: Infrastructure Ad-Hoc

Channel: 6

Authentication: Open

Encryption: None WEP

Format: ASCII HEX

Key Length: 64 bits 128 bits

WEP Key 1

WEP Key 2

WEP Key 3

WEP Key 4

< Prev **Next >** Cancel

Step 11 Confirm your settings at the last window. If everything is correct, click **Apply** and the configuration is completed.

Confirm Settings																																							
<p>Please confirm the configuration you have set up. When you confirm the settings, click Apply to finish the wizard and reboot the camera. Otherwise, click prev to go back to the previous step(s) and change the settings; or click Cancel to end the wizard and discard the changes.</p> <p>Please note that the camera's IP Address will be updated if you changed the IP setting. This may cause the camera to lose the image screen. If this happens, use the supplied IP Finder software application to locate the camera's IP Address. Then, connect to the camera to resume the image screen.</p>	<h3>Confirm Settings</h3> <table><tr><td>Camera Name:</td><td>AICN747W</td></tr><tr><td>Location:</td><td></td></tr><tr><td>IP Mode:</td><td>Static</td></tr><tr><td>IP Address:</td><td>192.168.1.240</td></tr><tr><td>Subnet Mask:</td><td>255.255.255.0</td></tr><tr><td>Default Gateway:</td><td>192.168.1.1</td></tr><tr><td>Primary DNS:</td><td>192.168.1.1</td></tr><tr><td>Secondary DNS:</td><td></td></tr><tr><td>SMTP Server Address:</td><td></td></tr><tr><td>Sender Email Address:</td><td></td></tr><tr><td>Authentication Mode:</td><td>None</td></tr><tr><td>Sender User Name:</td><td></td></tr><tr><td>Receiver #1 Email Address:</td><td></td></tr><tr><td>Receiver #2 Email Address:</td><td></td></tr><tr><td>ESSID:</td><td>default</td></tr><tr><td>Connection:</td><td>Infrastructure</td></tr><tr><td>Channel:</td><td>6</td></tr><tr><td>Authentication:</td><td>Open</td></tr><tr><td>Encryption :</td><td>None</td></tr></table> <p>< Prev Apply Cancel</p>	Camera Name:	AICN747W	Location:		IP Mode:	Static	IP Address:	192.168.1.240	Subnet Mask:	255.255.255.0	Default Gateway:	192.168.1.1	Primary DNS:	192.168.1.1	Secondary DNS:		SMTP Server Address:		Sender Email Address:		Authentication Mode:	None	Sender User Name:		Receiver #1 Email Address:		Receiver #2 Email Address:		ESSID:	default	Connection:	Infrastructure	Channel:	6	Authentication:	Open	Encryption :	None
Camera Name:	AICN747W																																						
Location:																																							
IP Mode:	Static																																						
IP Address:	192.168.1.240																																						
Subnet Mask:	255.255.255.0																																						
Default Gateway:	192.168.1.1																																						
Primary DNS:	192.168.1.1																																						
Secondary DNS:																																							
SMTP Server Address:																																							
Sender Email Address:																																							
Authentication Mode:	None																																						
Sender User Name:																																							
Receiver #1 Email Address:																																							
Receiver #2 Email Address:																																							
ESSID:	default																																						
Connection:	Infrastructure																																						
Channel:	6																																						
Authentication:	Open																																						
Encryption :	None																																						

Now, unplug the RJ-45 Cable from the camera, and you may access the camera wirelessly.

Section 4

Viewing Images

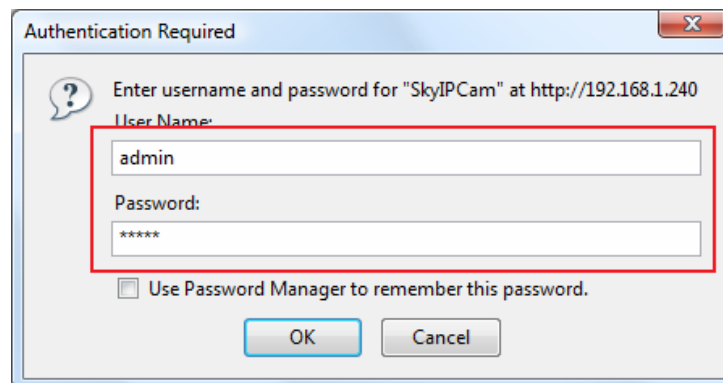
Method 1 --- Access from "Web Browser"

Step 1 If you know the IP address of your network camera, you may open the Web Browser on your computer.

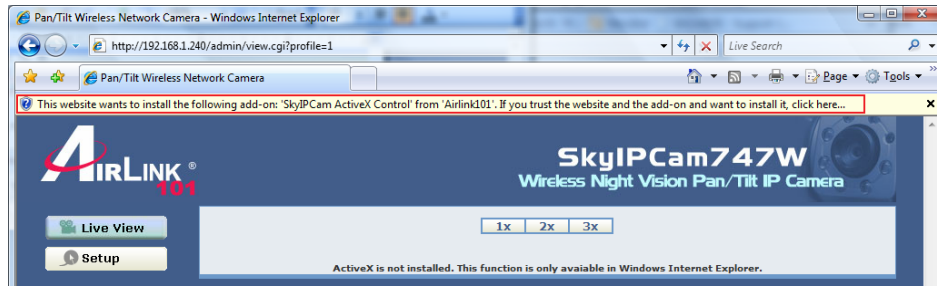
Step 2 Type the IP address of your camera (the default IP is 192.168.1.240) in the Address bar, and then press [Enter].



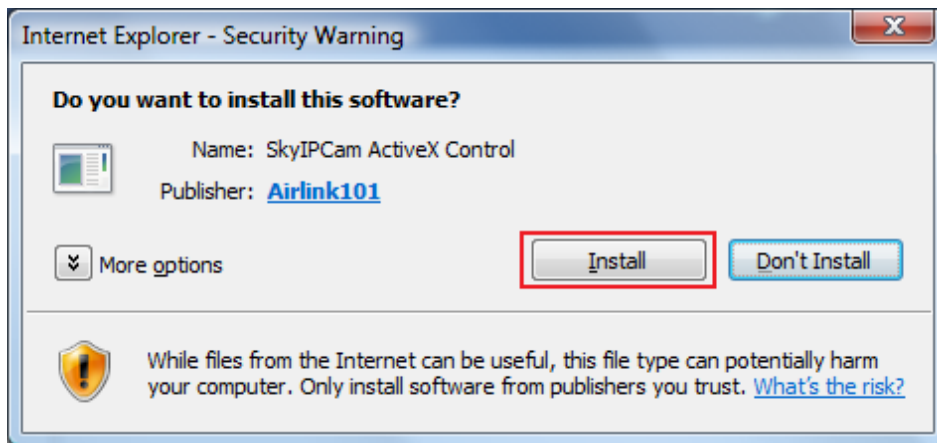
Step 3 Enter "admin" for both the **User name** and **Password**, and click **OK**.



Step 4 If it is the first time for your computer to access the Web based viewing page, you may be prompted to install the software of ActiveX Control. Click on the bar on top of the screen and click on **Install ActiveX Control**.



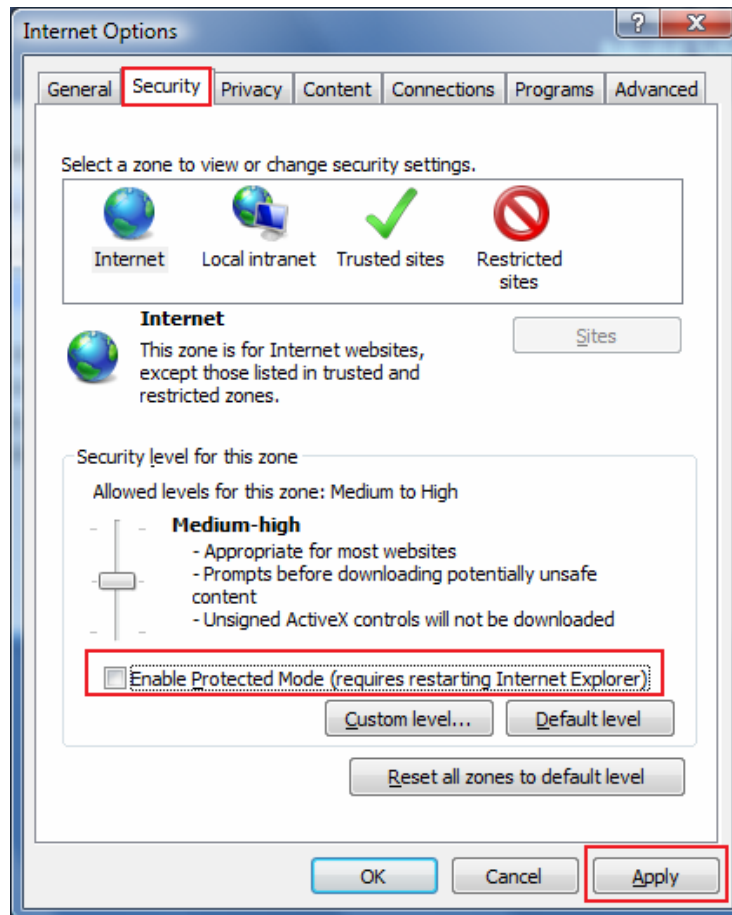
Step 5 Click on **Install**, and then you may be able to view images.



Step 6 To get a clear view of images, you can simply rotate the camera's lens clockwise or counter-clockwise to adjust the focus.



Note: If you are not able to find the pictures or video clips saved by “Snapshot” or “Manual Record” under **Windows Vista**, you may also need to disable Internet Explorer’s Protected Mode: Open **Internet Explorer** and click **Tools**. Then click **Internet Options**. Select the **Security** tab, uncheck the box for protected mode, and click **Apply**. Restart Internet Explorer.

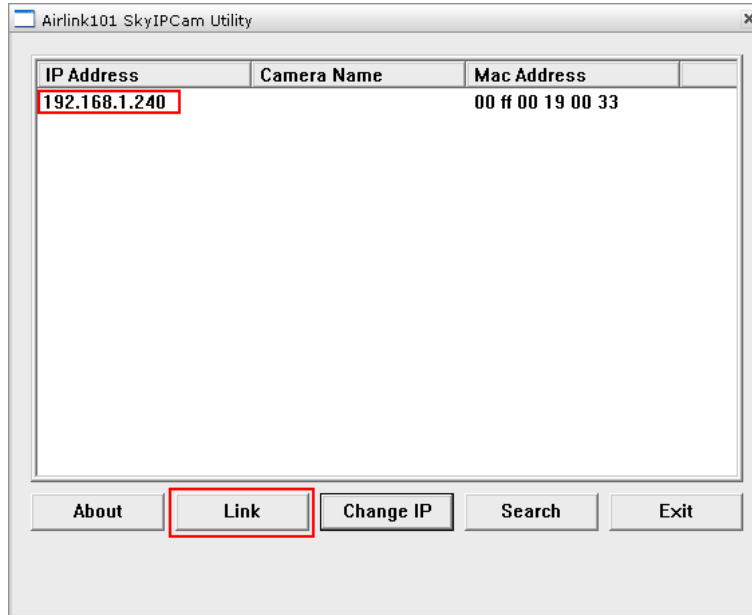


Method 2 --- Access from "SkyIPCam Utility"

Step 1 Go to **Start > (All) Programs > AirLink101 > AirLink101 SkyIPCam Utility**, and open the Airlink101 SkyIPCam Utility.



Step 2 Select your camera from the list and click **Link**



Step 3 Follow Step 3 to Step 6 mentioned in Method 1.

Technical Support

E-mail: support@airlink101.com

Toll Free: 1-888-746-3238

Website: www.airlink101.com

*Theoretical maximum wireless signal rate based on IEEE standard 802.11g specifications. Actual data throughput will vary. Network conditions and environmental factors, including volume of network traffic, building materials and construction, mix of wireless products used, radio frequency interference (e.g., cordless telephones and microwaves) as well as network overhead lower actual data throughput rate. Specifications are subject to change without notice. All products and trademarks are the property of their respective owners. Copyright ©2008 AirLink101®

Free Manuals Download Website

<http://myh66.com>

<http://usermanuals.us>

<http://www.somanuals.com>

<http://www.4manuals.cc>

<http://www.manual-lib.com>

<http://www.404manual.com>

<http://www.luxmanual.com>

<http://aubethermostatmanual.com>

Golf course search by state

<http://golfingnear.com>

Email search by domain

<http://emailbydomain.com>

Auto manuals search

<http://auto.somanuals.com>

TV manuals search

<http://tv.somanuals.com>