



Handles must be ordered separately.

GENERAL DESCRIPTION:

Cast brass valve body on 8 inch centers. Amarilis 1/4 turn washerless ceramic disc valve cartridges - reversible for use with either lever or round handles. 1/2" female NPT inlets/outlets. Easy clean 4-1/2" diameter "Rain" showerhead with 2.5gpm/9.5L/min. flow restrictor. Cast brass shower arm. Brass tub spout. Third handle provides positive diverting action between showerhead and tub spout.

PRODUCT FEATURES:

Brass Construction: Durable. Ideal for prolonged contact with water. Provides the finest surface for application of finishes.

Ceramic Disc Valve Cartridges: Assures a lifetime of drip-free performance.

Increased rough-in: 42mm to 86mm (1-5/8 to 3-3/8).

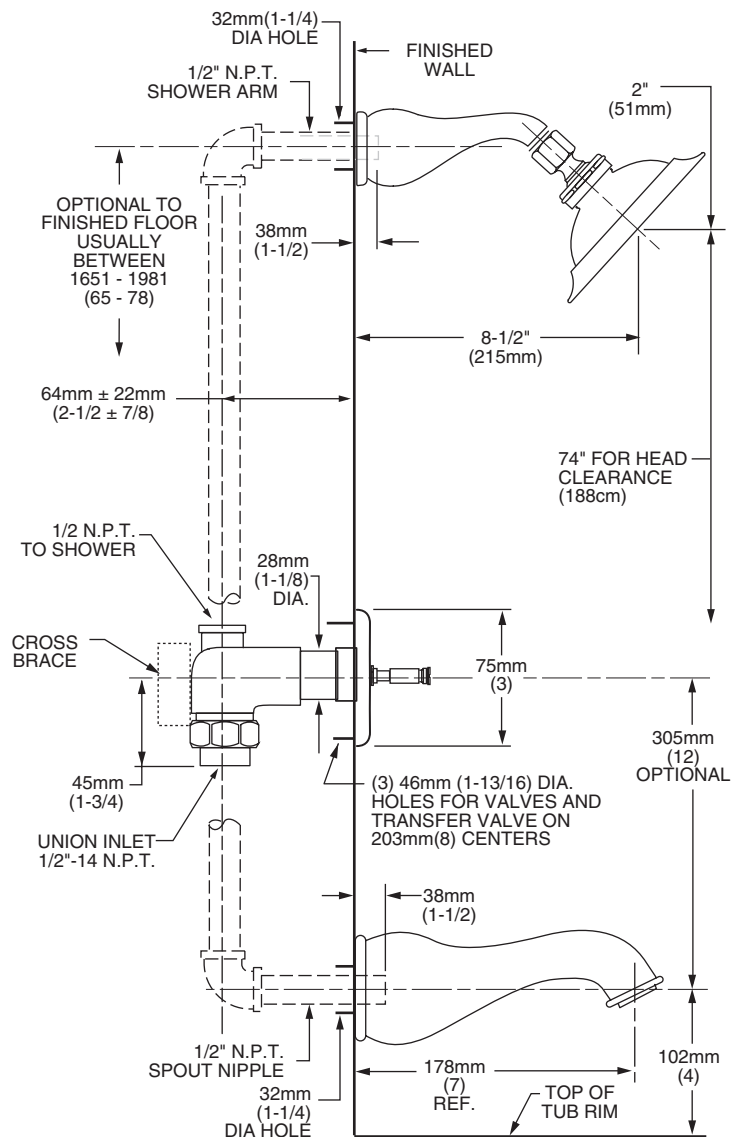
Exclusive Fixation Plate Design: Provides water-tight seal around valves, even against pliable, uneven walls. Wall escutcheon snaps easily into place.

Wide Selection of Styles and Configurations: Full range of interchangeable handle styles.

MODEL NUMBER:

- 3630.000 Bath/Shower Fitting
I.P.S. spout. Less handles.

Handles must be ordered separately.



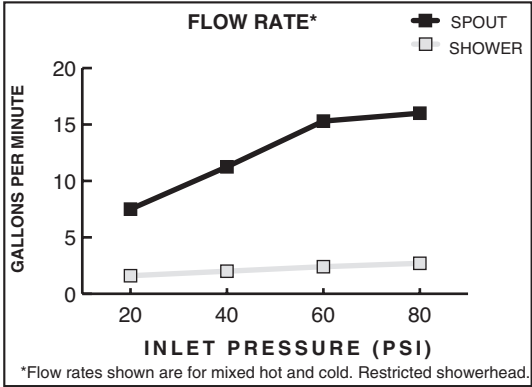
SUGGESTED SPECIFICATION:

Three handle bath/shower fitting shall feature cast brass construction. Shall also feature 1/4 turn washerless ceramic disc valve cartridges that are reversible for use with round or lever handles. Fitting shall be American Standard Model # 3630.000.____ and handle kit # 0000.____.

CODES AND STANDARDS

These products meet or exceed the following codes and standards:

**ASME A112.18.1
CSA B 125**



Product Number	Description	Finish Options*
		Polished Chrome
		002
3630.000	Bath/Shower. I.P.S. spout. Less handles.	

Handles must be ordered separately.

To order **Less Handles** - Specify: 4 digit style number followed by three zeros and 3 digit finish number.
Example 3630.000.002 = Bath/Shower Fitting in Polished Chrome finish.

The above fittings will accept the following Amaris-Series handles.

453	443	463	433	553	543	573	903 913	863

Meets the American Disabilities Act Guidelines and **ANSI A117.1** Requirements for the physically challenged.

***EverClean™ Finish:**

- Offered on Polished Chrome (002) finish.
- One wipe effortlessly removes spots.
- Eliminates the need for cleaners and scrubbing.

Free Manuals Download Website

<http://myh66.com>

<http://usermanuals.us>

<http://www.somanuals.com>

<http://www.4manuals.cc>

<http://www.manual-lib.com>

<http://www.404manual.com>

<http://www.luxmanual.com>

<http://aubethermostatmanual.com>

Golf course search by state

<http://golfingnear.com>

Email search by domain

<http://emailbydomain.com>

Auto manuals search

<http://auto.somanuals.com>

TV manuals search

<http://tv.somanuals.com>