



GigaX1024P

24 Ports 10/100 Mbps + 2 Gigabit Smart Switch

GigaX1024

24 Ports 10/100 Mbps Unmanaged Switch

Quick Installation Guide

Copyright © 2004 ASUSTeK COMPUTER INC. All Rights Reserved.

Introduction

GigaX1024P rack mountable switch provides non-blocking, wire-speed performance and easy management to meet your intensive network demands. It features auto-sensing, and auto MDI/MDIX Ethernet ports for simple connectivity and enhance your network performance with flow control and QoS ability.

Features

- 24 10/100 Mbps RJ-45 ports
- 2 10/100/1000 Mbps RJ-45 ports (GigaX1024P only)
- 8.8 Gbps switch capacity
- 6.6 Mbps forwarding rate for GigaX1024P and 3.6 Mbps forwarding rate for GigaX1024
- Plug and play with your networks – auto MDI/MDIX, and auto-sensing for speed and duplex mode on all ports
- Fan-less design provides quiet operation
- Place on a flat surface, or mounts on a rack
- Flow control (802.3x in full-duplex mode) schemes to support zero loss under temporary network congestion
- Head of Line (HOL) blocking preventions
- Recognize 802.1p/TOS/DS to meet QoS requirements
- 8K MAC address learning and aging for concurrent connections to 8K nodes
- Up to 200Mbps for fast Ethernet ports and 2000Gbps for Gigabit ports in full-duplex mode
- Easy to read LEDs providing quick overview of link status, speed, duplex mode and collision on all ports
- Lightly management through ASUS CNM software (GigaX1024P only)
- Tx/Rx bandwidth management for each port (GigaX1024P only)
- 32 port-based VLAN groups (GigaX1024P only)
- Up to 8 manual trunk groups, support 802.3ad (GigaX1024P only)
- Port management and status monitoring (GigaX1024P only)
- Broadcast storm filtering (GigaX1024P only)
- IGMP v1, v2 snooping (GigaX1024P only)

Package contents

Before installing the switch, check your package for the following items:

- Switch (GigaX1024P or GigaX1024)
- AC power cable
- This installation guide
- Mounting kit (2 brackets and 6 screws)
- CD-ROM including CNM software (GigaX1024P only)



NOTE. Contact your local reseller if any of the items are damaged or missing.

Technical specifications

Physical Dimensions

43.5mm (H) X 444 mm (W) X 200mm (D)

Environmental Ranges

Operating temperature	-10°C to 50°C (14°F to 122°F)
Storage temperature	-40°C to 70°C (-40°F to 158°F)
Operating humidity	0 to 90%
Storage humidity	0 to 90%
Operating altitude	up to 15,000 ft (4,500m)
Storage altitude	up to 40,000 ft (12,000m)

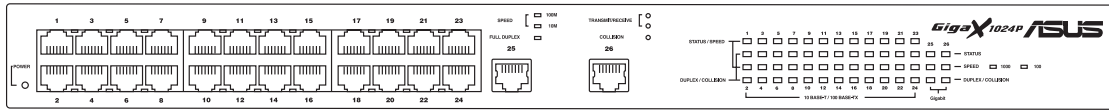
Power

Input	100V to 240V AC/50-60Hz
Power Consumption	12 Watts

Certification

FCC Class A, CE, CCC

Front panel



Label/LED	Color	Indication
1 – 24		Identifies the 10/100 port number.
STATUS / SPEED	Green / Amber	Green: 100Mbps Amber: 10Mbps Blinking: Receiving or transmitting data packets Off: There is a problem with the link.
DUPLEX / COLLISION	Amber	On: Switch is operating in full-duplex mode. Blinking: Switch is operating in half-duplex mode and collisions are occurring. Off: Switch is operating in half-duplex mode and no collisions are detected.
25 – 26 (GigaX 1024P only)		Identifies the 10/100/1000 port number.
STATUS	Green	On: The link is good Blinking: Receiving or transmitting data packets Off: There is a problem with the link.
SPEED	Green / Amber	Green: 1000Mbps Amber: 100Mbps Off: 10Mbps
DUPLEX / COLLISION	Amber	On: Switch is operating in full-duplex mode. Blinking: Switch is operating in half-duplex mode and collisions are occurring. Off: Switch is operating in half-duplex mode and no collisions are detected.

Rear panel



Power connector

Placement options

Placing the switch on a flat surface

You may place the GigaX1024P/GigaX1024 on any flat surface. Make sure the location meets operating environment specifications.



NOTE. The length of the UTP Category 5 cable length should not exceed 100 meters (328 feet).

Mounting the switch on a rack

Each side of the switch has 3 screw holes and two post holes for the mounting bracket.

To mount the switch on a rack:

1. Locate three screw holes on both sides of the switch.
2. Align the mounting brackets with the switch screw holes.
3. Secure the mounting brackets with three screws on both sides of the switch.
4. Place the switch in a 19-inch rack, then secure it with two rack mount screws.



NOTE. The rack mount screws should have come with your server rack and are not supplied by ASUS.

Connecting network devices

Follow these instructions to connect network devices to the switch.

The port on the switch can be used to uplink to another switch, hub, bridge or repeater as an uplink port. Either crossover or straight-through can be detected and adjust for the cable by the switch.



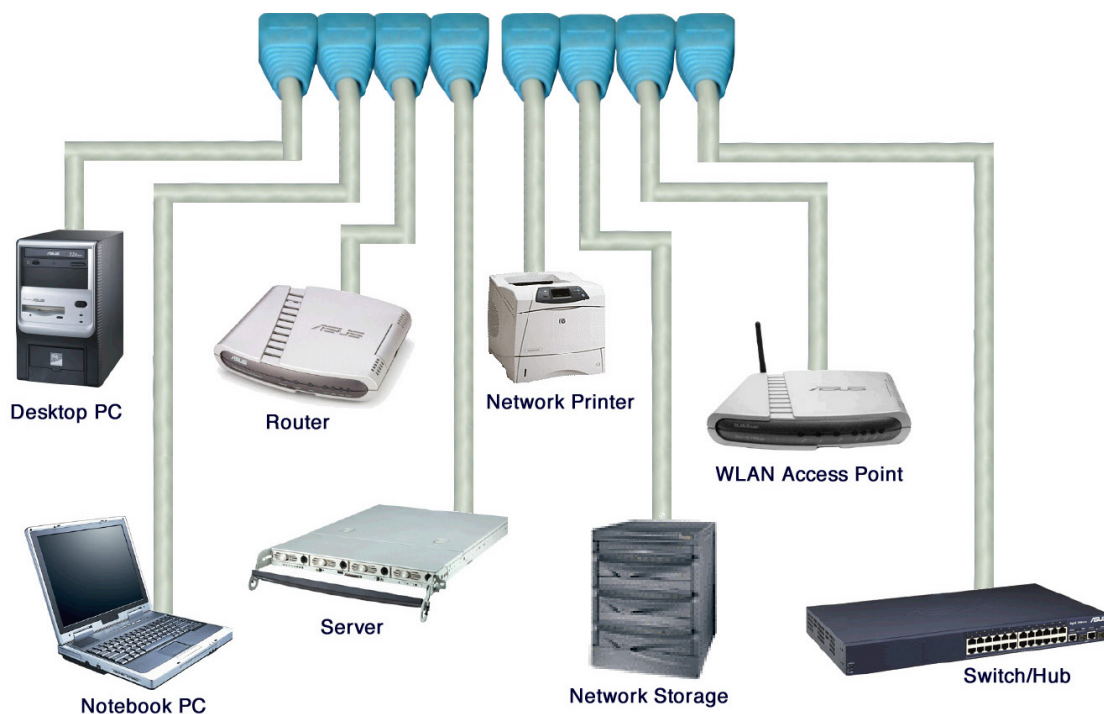
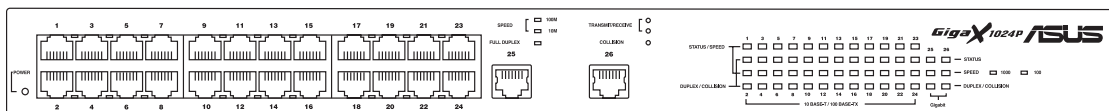
NOTE: Use Category 5 Ethernet straight-through cables to ensure proper connections between the switch and other network devices.



NOTE: You may use the switch Ethernet ports as an uplink to another switch, hub, bridge or repeater. The switch is capable of detecting and adjusting either crossover or straight-through cables.

1. Connect one end of the Ethernet cable to an Ethernet port on the switch. Connect the other end to the Ethernet port of the network device. Repeat this step to connect additional network devices.

Switch Connection Example



2. Plug one end of the power cable to the power connector on the switch rear panel, then plug the other end to an electrical outlet.
3. The Power LED and LED indicators for active Ethernet ports light up to indicate that the device is on and in use. Refer to the front panel Label/LED table for LED indications.
4. For GigaX1024P only, you can install ASUS CNM in any Windows OS and use CNM to manage the switch. For CNM details, please refer to CNM manual in the CD-ROM. You also can download the CNM software and manual from the ASUS website.

Troubleshooting

This troubleshooting guide provides answers to some common problems which you may encounter while installing and/or using the ASUS GigaX1024 switch. These problems requires simple troubleshooting that you can perform by yourself. Contact the ASUS Technical Support if you encounter problems not mentioned in this section.

Problem	Action
<p>The POWER LED does not light up.</p>	<p>Check if the power cable is properly connected to the switch and to an electrical outlet with a correct voltage output.</p>
<p>The STATUS/SPEED LED does not light up even after an Ethernet cable is connected.</p>	<ul style="list-style-type: none"> • Check if the Ethernet cable is properly connected to the switch and to the network device. • Make sure that the switch and your network device are powered on. • Check if the Ethernet cable is sufficient to your network requirements. Make sure you use Category 5 cables. 10Mbit/sec cables may work with lower quality cables.
<p>The COLLISION/DUPLEX LED keeps blinking.</p>	<p>Collisions are occurring and are reducing the network performance. To solve this problem:</p> <ul style="list-style-type: none"> • Try replacing your UTP Category 5 cable with a new one. • Check the cable length. The cable length between the switch and the network device must not exceed 100m (328 feet). <p>NOTE. Some old network devices may experience this problem.</p>

Glossary

10BASE-T	10 Mbps Ethernet over twisted pair cable (Category 3).
100BASE-T	100 Mbps Ethernet over twisted pair cable (Category 5)
1000BASE-T	1000 Mbps Ethernet over twisted pair cable (Category 5)
Auto MDI/MDIX	Allows network connections using either straight through or crossover cables.
Ethernet	The most commonly installed computer network technology, usually using twisted pair wiring. Ethernet data rates are 10 Mbps, 100 Mbps and 1000 Mbps.
Mbps	Abbreviation for Megabits per second, or one million bits per second. Network data rates are often expressed in Mbps.
Network	A group of computers that are connected together, allowing them to communicate with each other and share resources, such as files. A network can be small, such as a <i>LAN</i> , or very large, such as the <i>Internet</i> .

Free Manuals Download Website

<http://myh66.com>

<http://usermanuals.us>

<http://www.somanuals.com>

<http://www.4manuals.cc>

<http://www.manual-lib.com>

<http://www.404manual.com>

<http://www.luxmanual.com>

<http://aubethermostatmanual.com>

Golf course search by state

<http://golfingnear.com>

Email search by domain

<http://emailbydomain.com>

Auto manuals search

<http://auto.somanuals.com>

TV manuals search

<http://tv.somanuals.com>