

# IMPORTANT SAFETY INSTRUCTIONS

When using electrical appliances, especially when children are present, basic safety precautions should always be followed, including the following:

## READ ALL INSTRUCTIONS BEFORE USING KEEP AWAY FROM WATER

**DANGER** – Any appliance is electrically live even when the switch is off. To reduce the risk of death by electric shock:

1. Always unplug appliance immediately after using.
2. Do not use while bathing or in a shower.
3. Do not place or store appliance where it can fall or be pulled into a tub or sink.
4. Do not place in, or drop into water or other liquid.
5. If an appliance falls into water, unplug it immediately. **Do not reach into the water.**

**WARNING** – To reduce the risk of burns, electrocution, fire, or injury to persons:

**1. This appliance should never be left unattended when plugged in. Do not pull, twist, or wrap line cord around appliance, even during storage.**

**2. This appliance should not be used by, on, or near children or people with certain disabilities. Unsupervised use could result in fire or personal injury.**

**3. Use this appliance only for its intended use as described in this manual. Do not use attachments not recommended by the manufacturer.**

**4. Never operate this appliance if it has a damaged cord or plug, if it is not working properly, if it has been dropped or damaged, or dropped into water. Return the appliance to an authorized service center for examination and repair.**

5. Keep the cord away from heated surfaces.
6. Never place the appliance on a soft surface, such as a bed or couch, where the air openings may be blocked. Keep the air openings free of lint, hair, and the line. Unplug before storing.
7. Never use while sleeping.
8. Never drop or insert any object into any opening or hose.
9. Do not use outdoors or operate where aerosol (spray) products are being used or where oxygen is being administered.
10. Do not use an extension cord with this appliance.
11. This curling iron and clip are hot when in use. Do not let eyes or bare skin touch heated surface. Use handles or knobs.

**12. Do not place the heated iron directly on any surface or on the appliance power cord while it is hot or plugged in. Use the stand provided.**

**13. Do not touch hot surfaces of the appliance. Use handle or knobs.**

# SAVE THESE INSTRUCTIONS OPERATING INSTRUCTIONS

This appliance is intended for household use. Use on Alternating Current (60 Hertz) only. Standard appliances are designed to operate at 120 volts AC.

This appliance has a polarized plug (one blade is wider than the other). As a safety feature, this plug will fit in a polarized outlet only one way. If the plug does not fit fully in the outlet, reverse the plug. If it still does not fit, contact a qualified electrician. Do not attempt to defeat this safety feature.

## GETTING STARTED

The iron's multi attachment feature is designed to provide you with styling versatility for all hair textures. Your special styles combo unit includes a 1/2" and 5/8" ceramic dual barrel attachment, a 3/4" ceramic curling iron, and ceramic convertible straightener/crimper plates – all of these different styling options in one tool.



Silky Ringlets

## CURLING BASICS

1. Plug the curling iron cord into any household outlet (120V). Turn the unit on. The LED will be red when the unit is on. Never leave your curling iron on and unattended.

2. Section dry hair evenly, and comb each section before curling. Pressing the curl release, place curling iron midway up the hair section, then spread hair evenly between spoon and barrel. Release automatic curl release to hold hair in place. Gently slide curling iron down to hair ends. To avoid crimped ends, make sure they are securely wound under the spoon in the direction of the desired curl.

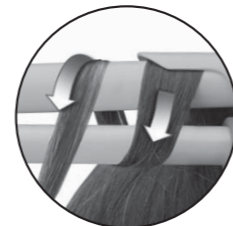
3. Wind the hair up as far as you want it curled, being careful not to let the iron touch the scalp. Hold in place for 8-12 seconds, depending on the texture and length of your hair. For tighter, bouncier curls, roll less hair. For looser, free flowing curls, roll more hair.

4. To remove curling iron, unwind the hair and press the automatic curl release. To set the curl, do not comb or brush hair until it cools.

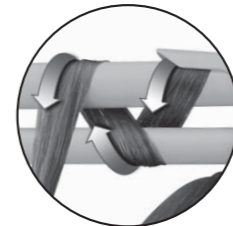
## USING THE DUAL BARREL ATTACHMENT

This unique combination of heated barrels allows you to create beautiful oval and ribbon ringlets.

**FOR OVAL CURLS**, place smooth hair strand on spoon clip and roll over both barrels. Hold in place for 8-12 seconds.



Oval Curl



Ribbon Curl

**TO CREATE RIBBON RINGLETS**, take smooth strand of hair and weave through barrels simulating a figure eight. Use caution as barrels are very hot.

## HOW TO CHANGE STYLING HEADS:

*Changing styling heads is easy.*

1. Make sure appliance is unplugged and cool before changing attachments.

2. Slide down locking switch at top of handle to release attachments.

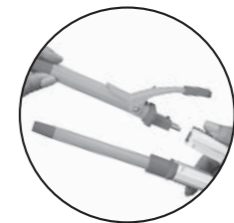
**Caution:** For use with dual barrel styling tool, make sure the 5/8" barrel with the spoon clip is inserted into the upper handle (the one with colorful graphics) and locked into place. Lock the 1/2" barrel into the lower housing. If this attachment is not locked into the lower handle, the unit will not operate properly.

3. Hold attachments by cool tips to remove.

4. To attach the convertible straightening/crimping plates to the power handle, simply insert plates into the handle and push to lock into place.

5. To convert from straight plates to crimper plates, or vice versa, hold the iron tightly closed. Push the rectangular button that protrudes from the base of the plate to convert the plates.

6. To remove plates, slide the locking switches down and pull plates out of power handle.

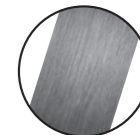


## TO STRAIGHTEN HAIR

To straighten hair, use straightener styling plates. Start with a hair section that is 2" wide and no more than 1/2" thick. Open the handle and place a hair section between the two hot plates close to your scalp. Trap hair between plates by firmly squeezing the handles together. While maintaining the tension, slowly pull the unit down along the hair section toward end of hair. At the end of the hair section, release the pressure on the handle and allow the hair section to slide out. Continue this process on additional sections of hair until you achieve the hair style you desire.

For extra styling, turn the straightening iron under when nearing the end of the hair section. This will give a nice flip to your hair.

Some experience is necessary when first using this straightening iron. After a few uses, you will learn the ideal way to straighten and style your hair easily.

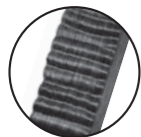


Straight Styles

### TO CRIMP HAIR

To create fun, trendy crimp styles slide the switch to use the crimper side. Start with a hair section that is 2" wide and no more than 1/2" thick. Open the barrel and place a hair section between the two hot plates close to your scalp. Trap hair between plates by firmly squeezing the handles together. While maintaining the tension, slowly pull the unit down along the hair section toward end of hair. At the end of the hair section, release the pressure on the handle and allow the hair section to slide out. Continue this process on additional sections of hair until you achieve the hair style you desire.

Some experience is necessary when first using this crimping iron. After a few uses, you will learn the ideal way to crimp and style your hair easily.



Trendy Crimp Styles

### TO WAVE HAIR

For flowing waves, separate a wider section of hair than you normally do for curling, and roll it as you usually do. For best results, hair should be at least 6-8" long.

### FOR TOUSLED HAIR

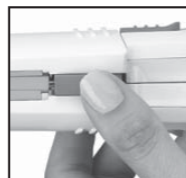
Create soft, tousled waves by curling each hair section in a random direction. Then, turn head upside down, shake, and gently scrunch hair with fingers. Bring head back to position and repeat for fullest volume.

### WIDE WAVES

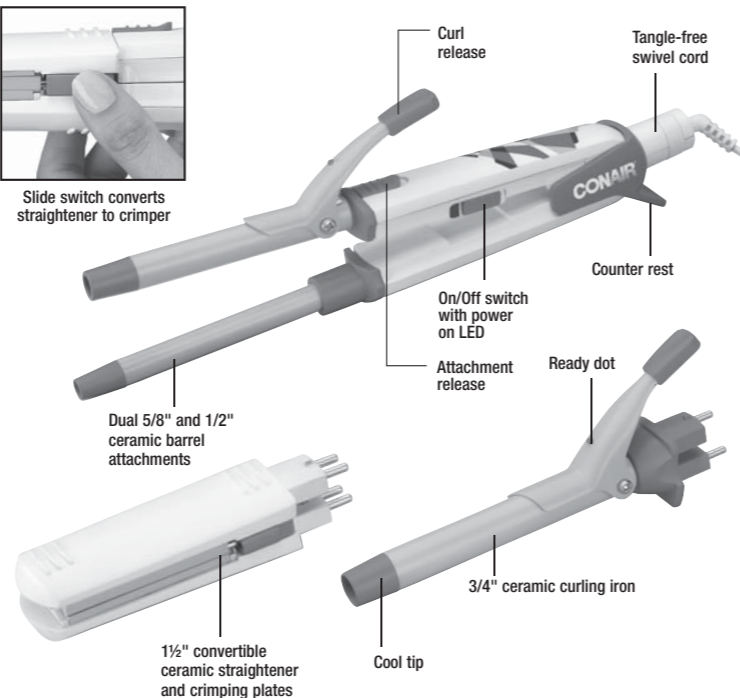
Pick up a section of hair and place the curling iron under it close to the scalp, making half a turn downward. Remove the curling iron. Working with the same hair section, start where you left off and place the curling iron on top of the hair, curling it up half a turn. Proceed down the same hair section, alternating the curl upward and downward. Repeat procedure with remaining sections of hair. For best results, hair should be about 6-8" long.



Soft Waves



Slide switch converts straightener to crimper



**WARNING:** The iron's barrel will get very hot within a few seconds and should not be placed in contact with the skin after the curling iron is turned on.

## USER MAINTENANCE

### CAUTION

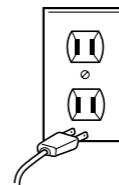
NEVER allow the power supply cord to be pulled or twisted. Never wrap the cord around the curling iron. Damage will occur at the high flex point of entry into the curling iron, causing it to rupture and short. Inspect the cord frequently for damage. Stop use immediately if damage is visible or if unit stops or operates intermittently.

### STORAGE

When not in use, your appliance should be disconnected, allowed to cool and stored in a safe, dry location out of reach of children. Do not jerk or strain cord at plug connections. Do not wrap the line cord around the appliance. Allow the cord to hang or lie loose and straight at the point of entry into the appliance.

**WARNING:**  
IF YOU THINK  
THE POWER IS OFF  
WHEN THE SWITCH  
IS OFF,  
YOU'RE WRONG.

KEEP AWAY FROM WATER



Everyone knows that electricity and water are a dangerous combination. But did you know that an electric appliance is still electrically live even if the switch is off? If the plug is in, the power is on. So when you are not using your appliances, keep them unplugged.

**ALWAYS UNPLUG  
SMALL APPLIANCES**

### LIMITED ONE YEAR WARRANTY

Conair will repair or replace, at our option, your appliance free of charge for 12 months from the date of purchase if the appliance is defective in workmanship or materials.

To obtain service under this warranty, return the defective product to the service center listed below, together with your sales slip and \$5.00 for postage and handling. California residents need only provide proof of purchase and should call 1-800-3-CONAIR for shipping instructions. In the absence of a receipt, the warranty period shall be 12 months from the date of manufacture.

**ANY IMPLIED WARRANTIES, OBLIGATIONS, OR LIABILITIES, INCLUDING BUT NOT LIMITED TO THE IMPLIED WARRANTY OF MERCHANTABILITY AND FITNESS FOR A PARTICULAR PURPOSE, SHALL BE LIMITED IN DURATION TO THE 12 MONTH DURATION OF THIS WARRANTY.** Some states do not allow limitations on how long an implied warranty lasts, so the above limitations may not apply to you.

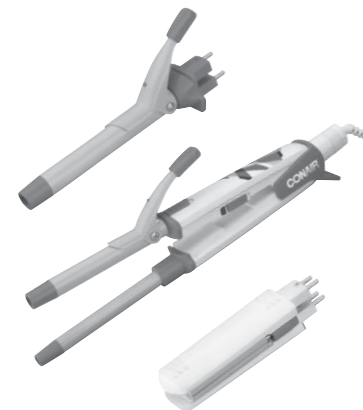
**IN NO EVENT SHALL CONAIR BE LIABLE FOR ANY SPECIAL, INCIDENTAL, OR CONSEQUENTIAL DAMAGES FOR BREACH OF THIS OR ANY OTHER WARRANTY, EXPRESS OR IMPLIED, WHATSOEVER.** Some states do not allow the exclusion or limitation of special, incidental, or consequential damages, so the above limitation may not apply to you. This warranty gives you specific legal rights, and you may also have other rights which vary from state to state.

**SERVICE CENTER**  
CONAIR CORPORATION  
Service Department  
7475 N. Glen Harbor Blvd.  
Glendale, AZ 85307

©2007 CONAIR CORPORATION  
www.conair.com  
07NP042 Patent Pending

IB-7594

**CONAIR**  
ProStyles™



### Instruction & Styling Guide

For your safety & continued enjoyment of this product, always read the instruction book carefully before using.

**Straighten, Wave, Crimp, & Curl**

Model CB603CS

## Free Manuals Download Website

<http://myh66.com>

<http://usermanuals.us>

<http://www.somanuals.com>

<http://www.4manuals.cc>

<http://www.manual-lib.com>

<http://www.404manual.com>

<http://www.luxmanual.com>

<http://aubethermostatmanual.com>

Golf course search by state

<http://golfingnear.com>

Email search by domain

<http://emailbydomain.com>

Auto manuals search

<http://auto.somanuals.com>

TV manuals search

<http://tv.somanuals.com>