



Coway

Coway Air Purifier AP-1008BH/CH

- This product is for domestic use only. It cannot be used in an overseas country where the power voltage is different.
- Warranty card is included in this user's manual.
- Read and save these instructions



FEATURES

1. A3™ medium filter

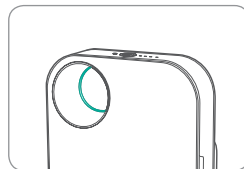
A3™ medium filter exhibits an effective antimicrobial activity for removing the medium dust and the gases. A3™ medium filter can be cleaned by using the vacuum cleaner and it keeps the antimicrobial activity after the cleaning.

* A3™ : Anti-bacterial , Anti-order, Anti-dust



2. Pollution level indicator/ mood lamp

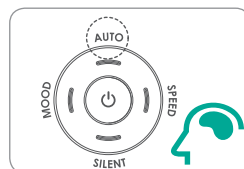
It has the function showing in the pollution level indicator by sensing the pollution of the indoor air automatically and added up to the interior-wise function.



3. Power saving mode

AS the fan is automatically turned on/off according to the pollution level of the surrounding area, it helps the electricity saving for continuous operation of the product.

* Available only in auto mode operation



4. Slim design

The slim design makes the product fit well in any place in harmony with the surroundings.



DEAR CUSTOMERS

Thank you for using the **coway air purifier**.

Please read the user's manual to use and maintain the product correctly.

If you encounter a problem while using the product, you may easily solve the problem by referring to the user's manual. As this manual contains the product warranty card, please keep it in a safe place.

CONTENTS

For Information

SAFETY INFORMATION	03
- Electricity Safety	03
- Installation Safety	04
- Operation Safety	05
PARTS NAME	07
AIR PURIFIED PROCESS	08

How to Use

PREPARATIONS	09
- How to Install Filter	09
OPERATION/INDICATION PART	10
HOW TO USE	13
ADJUST PARTICLE SENSOR	15

Maintenance

CLEANING METHOD	16
- Product	16
- Filter	17
FILTER REPLACEMENT	18

Others

TROUBLESHOOTING.....	19
SPECIFICATION	20
WARRANTY CARD	21

- Please keep the User's Manual where it can be readily reached or found. -

SAFETY INFORMATION

The following information is for user safety that should be observed.

It is to ensure user safety and prevent property damage.

Please read the precautions carefully and use the product correctly.



Danger

If not observed, serious physical injury or property damage may occur as a result.



Warning

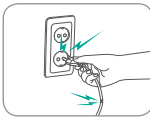
If not observed, serious physical injury or property damage may occur as a result.



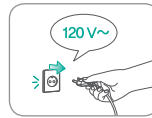
Caution

If not observed, minor physical injury or property damage may occur as a result.

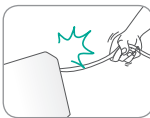
| Electricity Safety |



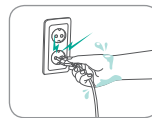
⚠ Do not use a damaged power plug or loose electric outlet.
Otherwise electric shock or fire may occur as a result.



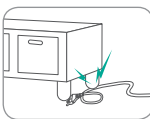
⚠ Make sure to connect the power plug to a dedicated electric outlet for 120 V~ 60 Hz.
Otherwise electric shock or fire may occur as a result.



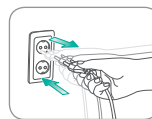
⚠ Do not move the product by pulling the power cord.
Otherwise electric shock or fire may occur as a result.



⚠ Do not handle the power plug with a wet hand.
Otherwise electric shock or fire may occur as a result.



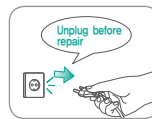
⚠ Do not forcibly bend the power cord or run it under a heavy object to prevent it from being damaged or deformed.
Otherwise electric shock or fire may occur as a result.



⚠ Do not plug in and plug out the power plug repeatedly.
Otherwise electric shock or fire may occur as a result.



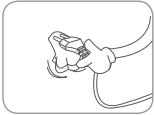
⚠ If the electric outlet is wet, carefully unplug the product and let the electric outlet completely dry before subsequent use.
Otherwise electric shock or fire may occur as a result.



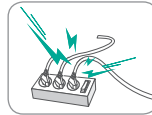
⚠ Unplug the product before repair, inspection, or parts replacement.
Otherwise electric shock or fire may occur as a result.



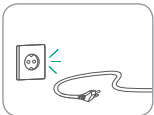
Danger Warning Caution



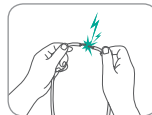
! Remove any dust or water from the power plug.
Otherwise electric shock or fire may occur as a result.



! Do not plug into an electric outlet or power strip that is being used by several other appliances. Use an electric outlet dedicated to the product.
Otherwise fire may occur as a result.



! Unplug the product if it is not to be used for a long time.
Otherwise electric shock or fire may occur as a result.

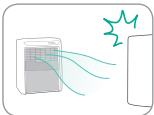


! Do not attempt to repair or modify the power cord.
Otherwise electric shock or fire may occur as a result.



! If the power cord is damaged, do not replace the cord yourself. Call coway service center to have it replaced.
Otherwise electric shock or fire may occur as a result.

Installation Safety



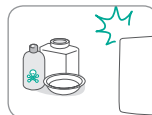
! Do not install the air purifier near a heating device.
Otherwise fire may occur as a result.



! Do not place the product on top of an electrical appliance such as a heater or tv.
Otherwise fire, electrical shock, or malfunction may occur as a result.



! Do not install the product in areas where moisture, dust or water (rainwater) is present.
Otherwise electric shock or fire may occur as a result.



! Do not use the product in areas where flammable gases or combustible materials are used or stored.
Otherwise electric shock or fire may occur as a result.

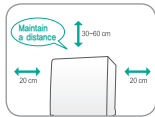


! Do not install the product on a sloped floor.
Otherwise injury to the user or damage to the product may occur as a result.



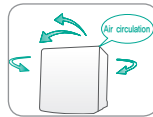
! Do not exert excessive force or shock on the product.
Otherwise the product may break as a result.

SAFETY INFORMATION

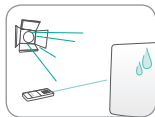


- ⚠ When the product is in use, maintain a distance of at least 20 cm from walls or adjacent objects and 30 cm - 60 cm above the product.

Otherwise walls, ceilings, or surrounding objects may be contaminated.

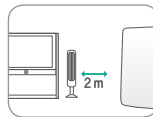


- ⚠ Install the product where no obstacles around the product block the circulation of air.



- ⚠ Use the air purifier away from lighting devices or direct sunlight.

Otherwise operation of the remote control may be interrupted.



- ⚠ Install the air purifier at least 2 m away from electronic products such as tv.

Otherwise radio interference may occur as a result.



- ⚠ Do not use the product in areas where it will be subjected to heavy smoke, odors, or oil.

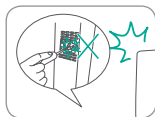
Otherwise product performance may deteriorate as a result.



- ⚠ Do not use the air purifier in a location exposed to direct sunlight.

Otherwise deformation or discoloration may occur as a result.

Operation Safety



- ⚠ Do not stick sharp objects such as a screw driver into the pollution sensor unit.

Otherwise electric shock may occur as a result.



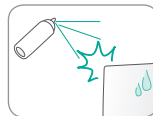
- ⚠ If the air purifier produces a strange noise, burning smell, or smoke, immediately remove the power plug from the electric outlet and call our service center.

Otherwise electric shock or fire may occur as a result.



- ⚠ Never put the product in water.

Otherwise electric shock may occur as a result.



- ⚠ Do not spray any flammable materials such as insecticides or fragrances to the air inlet.

Otherwise fire may occur or product performance may deteriorate as a result.



- ⚠ Do not disassemble, repair, or modify the product.

Otherwise electric shock or product damage may occur as a result.



- ⚠ Do not place on top of the product any containers with water, medicine, food, any metallic objects, or any flammable material.

If they get inside the product, electric shock, fire, or product damage may occur as a result.



- ⚠** Unplug the product before you clean it.
Otherwise electric shock or fire may occur as a result.



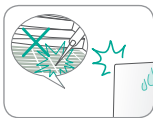
- ⚠** Do not clean the product by applying water directly to the product or using benzene or thinner.
Otherwise electric shock or fire may occur as a result.



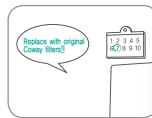
- ⚠** Do not stick fingers or foreign objects into the air inlet or outlet.
Otherwise physical injury or product malfunction may occur as a result.



- ⚠** Do not let children hang on to the product or climb on it.
Otherwise physical injury or product malfunction may occur as a result.



- ⚠** When removing the front cover, exercise caution not to have part of your body or other objects stuck in the upper part of the product.
Otherwise physical injury or product malfunction may occur as a result.



- ⚠** Replace filters with new ones according to filter replacement cycles.
Otherwise product performance may deteriorate as a result.



- ⚠** Clean the pre-filter with water regularly and dry completely before use.



- ⚠** Do not push or lean against this product, as it may topple over the product.
Otherwise physical injury or product malfunction may occur as a result.



- ⚠** Never let children insert their hands into the hole.
If they fall down with the product, an injury may occur.

- ⚠** This appliance has a polarized plug (one blade is wider than the other). To reduce the risk of electric shock, this plug is intended to fit in a polarized outlet only one way. If the plug does not fit fully in the outlet, reverse the plug. If it still does not fit, contact a qualified electrician. Do not attempt to defeat this safety feature.

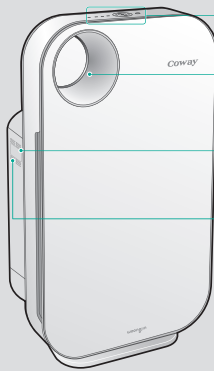
- ⚠** Do not operate any fan with a damaged cord or plug. Discard fan or return to an authorized service facility for examination and/or repair.

- ⚠** Do not run cord under carpeting. Do not cover cord with throw rugs, runners, or similar coverings. Arrange cord away from traffic area and where it will not be tripped over.

PARTS NAME

Front

< AP-1008BH/CH >



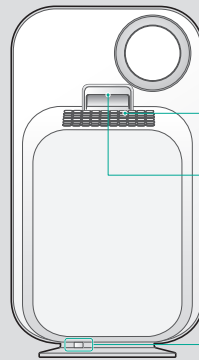
Display part/
operation part

Pollution level
indicator/
mood lamp

Pollution
sensor unit

Filter replacement
reset button

Rear



Air outlet

Handle

Power cord

Others



User's manual

AIR PURIFIED PROCESS

■ Pre-filter

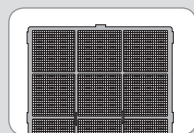
Treated with antibacterial materials, the pre-filter removes relatively large dust, mold, human hair, pet hair, and others.

■ A3™ medium filter

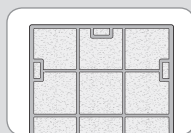
A3™ medium filter removes the medium dust and the gases, and it prevents the HEPA filter. A3™ medium filter is antimicrobial and can be cleaned by using the vacuum cleaner, and the A3™ medium filter keeps its antimicrobial activity after the cleaning.

■ HEPA filter

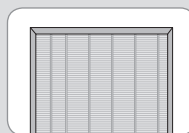
The high-performance composite HEPA filter effectively removes fine dust and cigarette smoke while the antibacterial and anti-mold functions of organic antibacterial materials eliminate germs and mold.



1. Pre-filter



2. A3™ medium filter

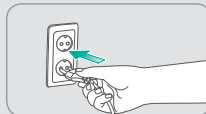


3. HEPA filter

PREPARATIONS

| Please Check Before Use! |

- ⚠** The product is for 120 V~ 60 Hz only.
Make sure to connect the power plug to a grounded electric outlet (120 V~ 60 Hz) dedicated to the product.



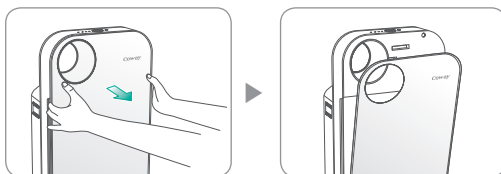
How to install filter



- Make sure to remove each filter's plastic packing before installing filters.
 - The product is for household use. Use the product indoors only.
 - When the product is not in use, remove the power plug from the electric outlet.
 - When installing filters, check that the front side of filters is in the correct direction.
- ▶ Order of filters : Pre-filter → A3™ medium filter → HEPA filter

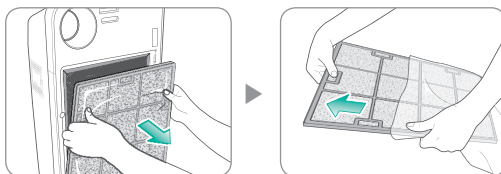
1. Open the front cover.

Open the front cover by pulling the upper part of it.



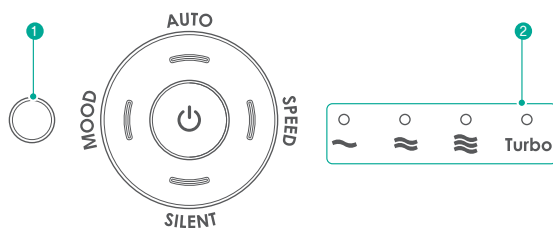
2. Take out filters and remove the plastic packing.

Remove the plastic packing of the filters except the pre-filter and then install filters according to the order of filters.



OPERATION / INDICATION PART

| Indication Part |



1 Light sensor

It is a sensor that detects light.



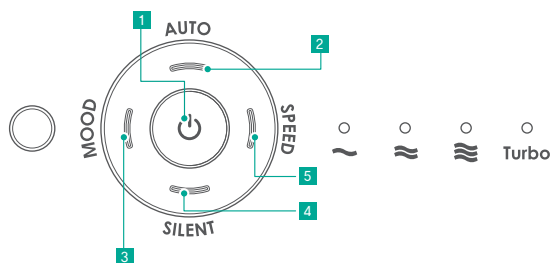
2 Speed indicator

By using the speed button, it is possible to select the airflow speed in 4 steps (Step 1 → Step 2 → Step 3 → Turbo)

* When the product is in sleep mode and power saving mode, the airflow speed indicators are not turned on.

OPERATION / INDICATION PART

| Operation Part |



1 Power button and its indicator

Use it to turn the product on/off. When the power is on, the indicator is turned on.

* To turn off the power, press and hold the power button for approximately 1 second.



2 Auto mode button and its indicator

Use it to select the automatic operation mode. When the auto mode is selected, the indicator is turned on.



3 Mood button and its indicator

Use it to turn mood lamp on/off .
When mood lamp is turned on, the indicator is turned on.



4 Silent mode button and its indicator

Use it to select the silent operation mode.
When the silent mode is selected, the indicator is turned on.

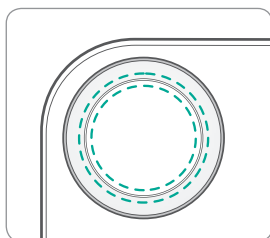






5 Speed button and its indicator

Use it to select the desired airflow speed.

* Pressing the speed button in auto, or silent mode makes the product immediately switch to manual mode.

It displays the current cleanliness (pollution) level of the room.



 Clean:Blue  Lightly polluted: Light purple  Polluted: Dark purple  Highly polluted : Red

* The cleanliness (pollution) level of the room is determined by the color at the end of the penetrating hole.

HOW TO USE

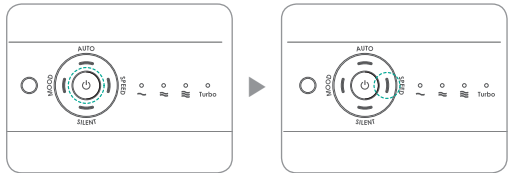


Tips

- Before operating the product, connect the power plug to a dedicated electric outlet.
- Once the power is turned on, you will see the previously used operation mode, already set for you to use.

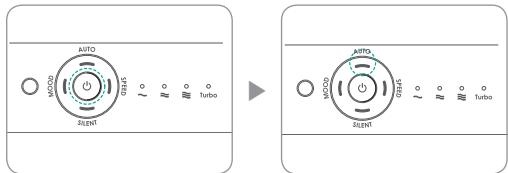
■ To operate the manual mode

Press the power button and then select the speed of the wind by pressing the speed button.



■ To select the auto mode

Press the power button and then select the auto mode button.



► Auto mode

Auto operating mode sets the wind speeds (step 1, 2, or 3) depending on the air pollution states that are detected by the pollution sensor.

When the pollution levels stay in step 1 for approximately 10 minutes, the product switches to power saving mode.

In the power saving mode, the fan is turned off to minimize the power consumption and all displays except the power and auto indicators are turned off.

When the pollution level increases to level 2 or higher, the power saving mode is turned off.

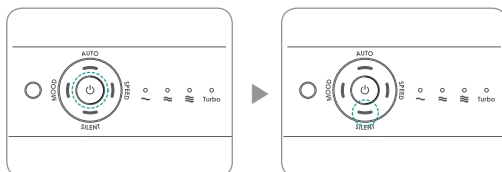
When the power saving mode continues for 30 minutes, the product temporarily switches from the power saving mode to step 1 to blend the surrounding air.

	Pollution level 1	Pollution level 2	Pollution level 3 or higher	Power saving mode
SPEED	Step 1	Step 2	Step 3	Fan off

■ To operate the silent mode

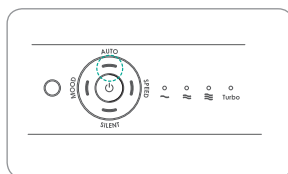
Press the power button and then the silent button.

In silent mode, the airflow speed is lowered below step 1 (lower rpm), making the environment quiet and pleasant.



■ To operate the sleep mode(available only in auto mode operation)

If the surroundings are dark for 3 minutes or longer in auto mode operation, the product automatically switches to sleep mode, lowering the airflow speed, noise, and electricity consumption. If the surroundings become bright again for 5 minutes or longer, the unit resumes normal operation. In sleep mode, all displays except the power indicator are turned off.

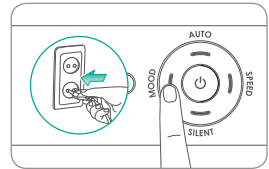


ADJUST PARTICLE SENSOR

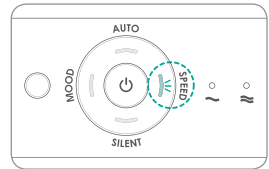
| How to Adjust the Sensitivity of the Pollution Sensor |

When the product is shipped out, the pollution sensor is set to standard sensitivity. If the pollution level stays at the highest level after 2 hours of operation or stays at the lowest level for more than 1 hour when the air does not seem clean, users can adjust the sensitivity of the pollution sensor as follows.

1. With the mood mode button pressed down, insert the power plug in the electric outlet.

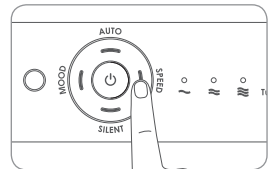


2. With a tone ringing twice, the current sensitivity indicator of the sensor blinks.

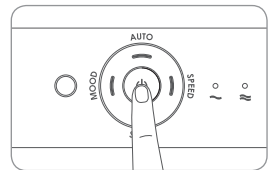


3. Adjust the sensitivity by pressing the speed button. The sensitivity of the sensor is displayed by ablinking airflow speed indicator.

Sensitive	Standard	Insensitive
Speed step 1	Speed step 2	Speed step 3



4. After adjustment, the sensitivity of the pollution sensor is set when the power button is pressed to turn the product off or automatically set when 20 seconds have passed in the setting mode.



CLEANING METHOD

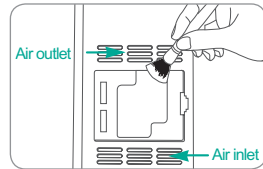
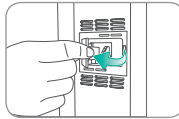


Tips

- Always unplug the air purifier before cleaning the product.
- Do not use detergents that contain organic solvents (solvent, thinner, etc), bleach, chlorine, or abrasives.
- Do not put the air purifier in water or spray water directly on it.

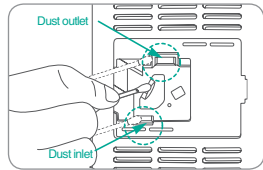
■ Cleaning the pollution sensor (every 2 months)

1. Open the pollution sensor cover on the right-hand side of the product. Clean the air inlet and outlet vent and then the pollution sensor with a soft brush or vacuum cleaner.



2. Wet a cotton swab lightly and clean the lens, dust inlet, and dust outlet. Clean them with a dry cotton swab to remove remaining moisture.

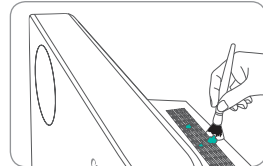
- * Without regular cleaning, the performance of the pollution sensor deteriorates.
 - * The cleaning cycle differs depending on the operation environment.
- When using the product in a dusty environment, clean the sensor more often.



■ Cleaning the air inlet and outlet (every 2 months)

Clean the air inlet and outlet with a soft brush.

- * Exercise caution not to have dust fall inside the air purifier.



■ Cleaning the front cover

Separate the front cover from the product and remove the dust attached to the surface with a soft dry brush or cloth.

- * Use lightly wet cloth if the contamination is serious but do not use abrasives.



■ Cleaning the product body (every 2 ~ 4 weeks)

Use dry, soft cloth to clean the product.

- * Use lightly wet cloth if the contamination is serious but do not use abrasives.



CLEANING METHOD

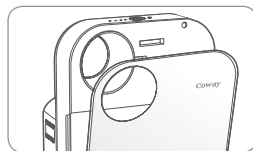
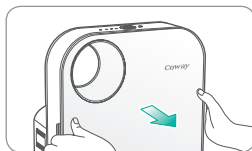


Tips

- Always unplug the product before cleaning the filter.
- The pre-filter is reusable by removing dust or cleaning it with water.
- If the pre-filter is not cleaned for a long time, the product performance may deteriorate.
- The HPEA filter are not reusable with cleaning. Never clean them with water.

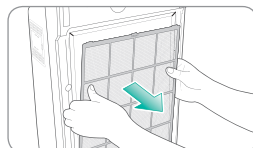
■ Cleaning the pre-filter (every 2 ~ 4 weeks)

1. Open the front cover by pulling out the end part above the air inlet.

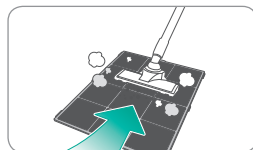


2. Take out the pre-filter by pulling out on the handles.

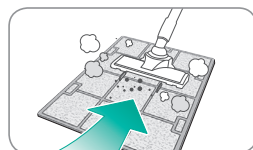
* To prevent dust from falling off, remove the filter carefully without exerting a shock.



3. Clean the pre-filter with a vacuum cleaner or with water depending on the level of contamination.

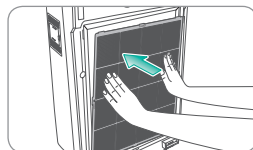


4. Clean the A3™ medium filter with a vacuum cleaner (every 4 months).



5. Install the pre-filter after removing the moisture completely. Fit the front cover back to the product.

* When refitting the pre-filter to the product, fit it in the hook correctly.



FILTER REPLACEMENT

■ How to replace filters

- Check that the 'front' sides of filters are in the correct direction.
- To maintain optimal performance of the product, use original coway filters.
- Always unplug the air purifier before replacing filters.

■ Filter cleaning and replacement cycles

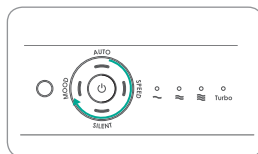
Filter	cycles	method
Pre-filter	Every 2~4 weeks	Cleaning
A3™ medium filter	Every 4 months	Cleaning
	Every 30 months	Replacement
HEPA filter	Every 30 months	Replacement

* Each service life is based on 24-hour use in Speed step 1.

* The recommended filter replacement cycles may differ depending on the operating environment.

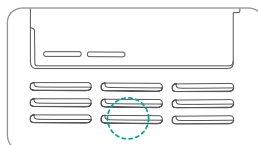
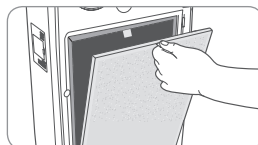
■ Filter replacement indicator

1. Button indicator is turned on one by one clockwise when the filter needs to be replaced.
2. Airflow LED indicates a filter that needs to be replaced.
Step 1 LED : HEPA
Step 2 LED : A3™ medium
3. When the filter replacement indicator is displayed, the pollution level indicator is turned off.
4. The filter replacement indicator is displayed for 5 minutes in every half an hour.
5. After replacing filter, push the Reset button one time.
6. When you have replaced a filter before the filter replacement cycle is reached, press and hold the RESET button for 1 second(forcible reset). The forcible reset initializes all the filter replacement cycle counters.



■ Replacing filters

1. When replacing filter, check that the front side is In the correct direction.
2. With the power is on, press the reset button with a sharp tool.



TROUBLESHOOTING

The air purifier may operate abnormally not because of the product malfunction but because of minor causes or the fact that the user is not familiar with the product use. In such a case, problems can be solved easily even without the help from the service center just by checking the following. If the problem still persists after you check the following, contact the service center.

Symptom	Check	Measures to take
No air is blowing.	· Is the power cord connected?	Connect the power cord to an electric outlet for 120 V~ 60 Hz.
	· Is the display part all turned off?	Press the power button and then select the desired function.
	· Isn't the power gone out?	Use the air purifier after the power comes back on.
	· Is the auto mode indicator turned on?	When the pollution level 1 lasts continuously for 10 minutes, the product switches to power saving mode, turning off the fan automatically.
The airflow speed does not change.	· Isn't it in manual or silent mode?	Set the desired operating mode.
	· Isn't the room dark?	When in sleep mode, the airflow speed is fixed to the minimum level.
The airflow speed is significantly weaker than before.	· Isn't the filter cleaning or replacement time passed?	Check the filter cleaning and replacement cycles and then clean/replace the filter(s) if necessary.
A bad smell comes out of the air outlet.	· Isn't the filter cleaning or replacement time passed?	Check the filter cleaning and replacement cycles and then clean/replace the filter(s) if necessary.
The color of the pollution level indicator always stays the same.	· Isn't there dust on the pollution sensor's lens?	Clean the lens of the pollution sensor.
	· Does the pollution level keep indicating a high level?	Adjust the sensitivity of the pollution sensor to Insensitive or Standard.
	· Does the pollution level keep indicating a low level?	Adjust the sensitivity of the pollution sensor to sensitive or standard.
The pollution level indicator blinks.	· Request service or ask our service center.	
When other functional problems are detected	· Check the symptoms, unplug the product, and then request service or ask service center.	

SPECIFICATION

Product specification	Air Purifier	
Model	AP-1008BH	AP-1008CH
Rated voltage	120 V~ 60 Hz	
Phase	1	
Power consumption	47 W	
Product insulation grade	Grade 2 device□	
Dust collection mode	Mechanical dust collection method (HEPA filter)	
Safety feature	Power is shut down when the front cover is opened.	
Installation place	Indoor use	
Maximum volume of air	5.8 m ³ /min	
Size	354 mm(Width) × 194 mm(Depth) × 645 mm(Height)	
Weight	7.3 kg	6.8 kg

- The specifications are subject to minor changes to improve the product performance.

**WARRANTY CARD OR WARRANTY LETTER
ONE YEAR LIMITED WARRANTY
AIR PURIFIER AP-1008BH/CH ("PRODUCT")**

Model:

Serial Number:

Customer Name:

("OWNER")

Date of Purchase:

What This Warranty Covers:

Commencing with the date of purchase of the Product and continuing for a period of one year, if manufacturing defects in the Product cause the Product to not operate properly for its intended use, then subject to the exclusions, conditions, and limitations contained herein, COWAY at its sole option will repair or replace the Product.

Decisions as to the extent of repair or replacement required will be made solely by COWAY.

The remedy under this Warranty is available only for that portion of the Product exhibiting defects at the time of the warranty claim. The replacement Product as well as any remaining original Product will be warranted only for the original one year warranty period. This limited warranty applies only to Product used for an application specified by COWAY for the Product and applied in strict accordance with COWAY published specifications in effect at the time of application. IF PRODUCT IS USED FOR OTHER THAN ITS INTENDED PURPOSE, IT IS SOLD AS IS AND WITHOUT ANY EXPRESS OR IMPLIED WARRANTIES, INCLUDING OF MERCHANTABILITY OR FITNESS FOR A PARTICULAR PURPOSE.

What This Warranty Does Not Cover:

This Warranty warrants that the Product will be free from manufacturing defects which affect the ability of the Product to operate for its intended use; it is not a warranty that the Product will never require repairs or to undertake responsibilities, liabilities or obligations other than those specifically identified in the preceding section.

COWAY is not responsible or liable for personal injury or property damage of any kind, even if arising from a breach of this Warranty.

Limitations and Exclusions:

TO THE EXTENT PERMITTED BY APPLICABLE LAW, COWAY DISCLAIMS ANY OTHER WARRANTY EXPRESS OR IMPLIED, THAN THAT PROVIDED FOR HEREIN. THIS WARRANTY IS IN LIEU OF AND EXCLUDES ALL OTHER WARRANTIES, GUARANTEES, CONDITIONS AND REPRESENTATIONS, EXPRESS OR IMPLIED, ORAL OR WRITTEN, STATUTORY OR OTHERWISE, INCLUDING BUT NOT LIMITED TO ANY IMPLIED CONDITIONS OR WARRANTIES AS TO THE MERCHANTABILITY OR FITNESS FOR A PARTICULAR PURPOSE OF THE COWAY PRODUCT. SOME STATES DO NOT ALLOW LIMITATIONS ON HOW LONG AN IMPLIED WARRANTY LASTS, SO THE ABOVE LIMITATION MAY NOT APPLY TO YOU. COWAY DOES NOT AUTHORIZE ANY PERSON INCLUDING ITS REPRESENTATIVES, TO MAKE ANY REPRESENTATION OR TO OFFER ANY WARRANTY, CONDITION OR GUARANTY IN RESPECT OF THE PRODUCT OTHER THAN THIS WARRANTY. THIS LIMITED WARRANTY SHALL BE THE OWNER'S SOLE AND EXCLUSIVE REMEDY AGAINST COWAY AND COWAY SHALL NOT BE LIABLE FOR ANY CONSEQUENTIAL, EXEMPLARY, SPECIAL, INCIDENTAL OR OTHER DAMAGES INCLUDING, BUT NOT LIMITED TO, LOSS OF PROFITS, AND LOSS OF USE. INCIDENTAL, CONSEQUENTIAL AND EXEMPLARY DAMAGES SHALL NOT BE RECOVERABLE EVEN IF THE REMEDIES OR THE ACTIONS PROVIDED FOR IN THIS WARRANTY FAIL OF THEIR ESSENTIAL PURPOSE. SOME STATES DO NOT ALLOW THE EXCLUSION OR LIMITATION OF INCIDENTAL OR CONSEQUENTIAL DAMAGES, SO THE ABOVE LIMITATION OR EXCLUSION MAY NOT APPLY TO YOU. COWAY SHALL NOT BE LIABLE FOR ANY DAMAGES WHICH ARE BASED UPON NEGLIGENCE, BREACH OF WARRANTY, STRICT LIABILITY OR ANY OTHER LEGAL THEORY OF LIABILITY OTHER THAN THE EXCLUSIVE LIABILITY SET FORTH IN THIS WARRANTY.

Limitations on Implied Warranties:

Any implied warranty of merchantability or fitness for a particular purpose or use, shall be limited to the duration of the foregoing express written warranty.

Conditions of Warranty:

COWAY's continuing liability under this Warranty is conditioned upon the following:

- a) The defect or damage is not caused by or is the result of: abnormal use or conditions; improper storage, unauthorized modifications or repair; misuse, neglect, accident, alteration, improper installation or other acts that are not the fault of Coway or the manufacturer of the product or that are not covered by the manufacturer's warranty;
- b) The Product has not been altered, modified or repaired without prior written approval of COWAY;
- c) The OWNER has notified COWAY in writing of any failure of the Product covered by this Warranty within thirty (30) days following such failure;
- d) There has been no misuse, abuse or negligence with respect to the Product on the part of the OWNER.

Waiver:

COWAY's failure at any time to enforce or rely upon any of the terms or conditions stated herein shall not be construed to be a waiver of its rights hereunder.

Obtaining Warranty Service and OWNER'S Duties:

If the Product fails to operate for its intended purpose, then notify COWAY or its Representative Agency, within 48 hours or within the next business day after discovery of any defect in the Product. The OWNER must give written notice to COWAY no later than thirty (30) days after a defect is discovered or should by reasonable diligence have been discovered. Claims under this Warranty will require proof of purchase by the OWNER.

USA

Add : WOONGJIN COWAY USA, INC.
695 SOUTH VERMONT, STE. 110(SOUTH TOWER) LOS ANGELES, CA 90005, USA
Call Center : (213) 386-9900 / (213) 480-1600
FAX : (213) 386-3990



Free Manuals Download Website

<http://myh66.com>

<http://usermanuals.us>

<http://www.somanuals.com>

<http://www.4manuals.cc>

<http://www.manual-lib.com>

<http://www.404manual.com>

<http://www.luxmanual.com>

<http://aubethermostatmanual.com>

Golf course search by state

<http://golfingnear.com>

Email search by domain

<http://emailbydomain.com>

Auto manuals search

<http://auto.somanuals.com>

TV manuals search

<http://tv.somanuals.com>