

AIR CLEANER

AP-1503CHE / User's Manual

Do not fail to read this user's manual before you use this air cleaner and keep it within ready reach.



- This product can not be used if the voltage is different from that mentioned in the rating plate.
- The Letter of Guarantee is enclosed here with this Coway product realizing "Quality is the Priority".

DEAR COWAY'S CUSTOMERS

First of all, we would like to thank you very much for purchasing this air cleaner. This product is superior to the ones in the past in function and we believe that it will provide you with clean and healthy air. We would like to recommend you to read this User's Manual carefully for proper operation and maintenance and keep this manual well together with the warranty. This user's manual could help to solve your problem.



Read this Manual

Inside this manual you will find many helpful hints on maintaining your air cleaner properly. Just a little preventive care on your part can save you a great deal of time and money over the life of your system.



Review the Section on Troubleshooting Tips

You'll find many answers to common problems here. If you review this chart of Troubleshooting Tips first, you may not need to call for service at all.



If You Need Service

If you do need service, you can relax knowing help is only a phone call away.

Safety Information

Electricity Safety	02
Installation & Use Safety	04

Operating Instructions

Features of Air Cleaner	07
Names of Each Part	09
Indication Part	10
Names of Internal Filters	11
Operation Part	13
Pre - operation Instructions	14
How to Use	15
Cleaning Method	18
Filter Replacement	22

Troubleshooting Tips

Before Asking A/S	24
-------------------------	----

Customer Service

Warranty Information	26
----------------------------	----

IMPORTANT SAFETY INFORMATION

Read All Instructions Before Using.

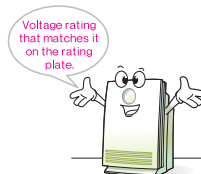
WARNING

For your safety, the information in this manual must be followed to minimize the risk of property damage or personal injury.

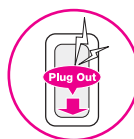


Electricity Safety

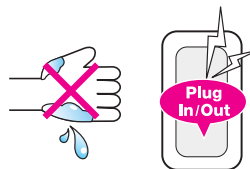
- To avoid fire or shock hazard, plug the air cleaner directly into a electrical outlet. And be sure the unit is in a room to protect it from the moisture.



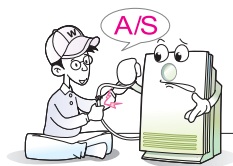
- Always unplug the air cleaner before moving it, replacing the filter, cleaning it or whenever the air cleaner is not in use.



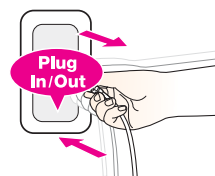
- Do not plug in or unplug the power cord with wet hands or get the plug wet to avoid electric shock.



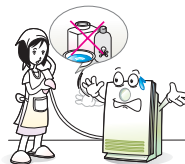
- Never operate the air cleaner if it has a damaged cord or plug, if it is not working properly, or if it has been damaged. Have the unit serviced by a qualified man.



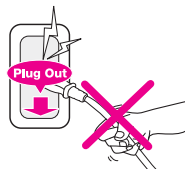
- Do not repeatedly plug in or unplug the power cord.



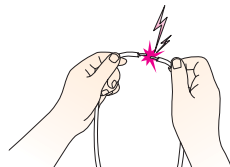
- Periodically remove dust from the power plug with a dry cloth. Dust lay on the unit can cause bad insulation and a fire may occur due to it.



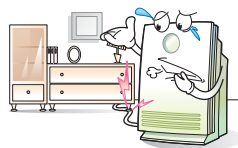
- When unplugging the power cord, never pull the cord to plug out. Please carry the unit by using a handle in the back of it.



- Do not use to connect or transform an electric wire without permission.



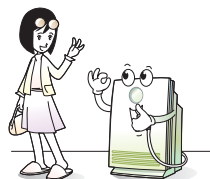
- Be sure the power cord not to be bend by force and do not put a heavy object on it to avoid any electric leakage or damage.



- Don't plug in a number of electrical goods in an outlet at the same time. Just use the outlet for only the air cleaner.



- Please plug out, if you are not use the unit for long time.



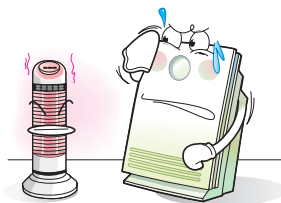


Installation & Use Safety

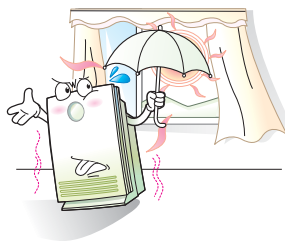
- Never splash the air cleaner with water to avoid the risk of electric shock.



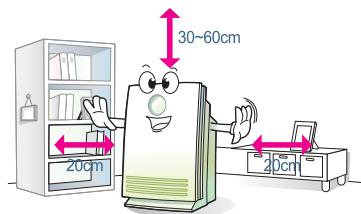
- To avoid fire hazard, never put the cord under rugs and near heat resistors, radiator, stoves, or heaters.



- Keep the air cleaner out of direct sunlight. The sun's heat may distort non-metallic parts and may damage the electric components.



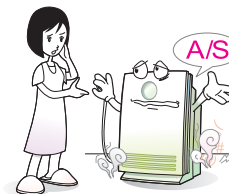
- It should be installed more than 20cm away from walls or objects, and more than 30 ~ 60cm low from the ceiling. If it is too close to walls or objects, it could cause contamination in the surroundings.



- Do not install the air cleaner on the inclined place and let it fall or impact. It may cause a breakdown by an electric shock.



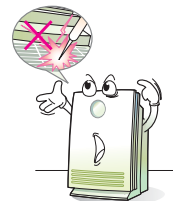
- Please have the unit serviced by the A/S center if it makes smoke or a noise.



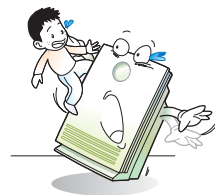
- Do not put glasses, metals, others on the unit.



- Do not block the filter cover, the ventilation inlet or outlet with a paper or a cloth. It may cause the lower performance of the product, or the fire.



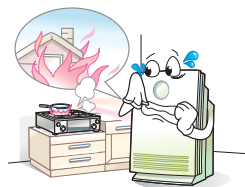
- Do not let kids climb and hang on the air cleaner.



- Do not put acute objects such as a gimlet in sensors of the unit.



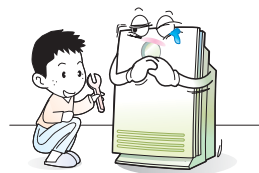
- Never use and put the flammable gas or inflammable materials near the air cleaner.



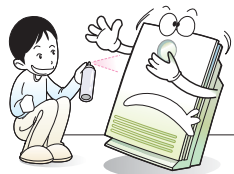
- Never soak the unit in the water.



- Do not modify, disassemble, or repair this appliance by yourself.



- Do not wipe this appliance with benzene or paint thinner. Do not use aerosol sprays near this appliance.



FEATURES OF AIR CLEANER

AIR CLEANER AP-1503CHE

1. Powerful Air Cleaner

The filter system is optimized to remove quickly pollutants. The unit contains the HEPA filter made of Nano Silver and Catechins which can be helpful for removal of bacteria, minute particles.



2. Advanced Deodorizing Ability

The deodorizing ability is improved by using AC deodorizing filter and RBD plasma antibacterial catalysis system which can eliminate not only harmful gases such as volatile organic compounds(VOCs), Ammonia, Aldehyde, but food and cigarette odors and so on.



3. Rhythm Cleaning System by Turbo Fan

Turbo fan increases the air flow rate and treats indoor pollutants very quickly by rhythm cleaning system.



4. Automatic Operation by Particle Sensor, Odor Sensor

It allows you to check the status of indoor pollution through a particle sensor on a real-time bases. Besides, it minimizes electric consumption by automatically adjusting fan speed according to the indoor pollution degree.



5. Silent Operation at Night (Sleep Mode)

It is designed to be automatically switched to the silent operation by sensing light to provide a quiet and pleasant environment at the dark.



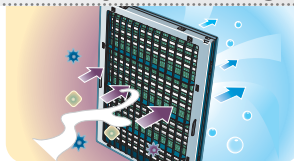
6. Safety Design for Customers

The operation of the air cleaner stops by safety switch when the front cover is opened. The ventilation inlet and outlet are designed for the sake of safety to prevent the risk of accidents.



7. RBD Plasma System &Antibacterial Catalysis Filtering

We complexly applies RBD Plasma system and antibacterial catalysis filter which can remove harmful gas, and the floating bacteria. You can save the maintenance cost because a regular cleaning can extend the average life span of the filter, besides.



※ RBD Plasma Catalysis System generates plasma which is the 4th condition of materials. RBD plasma system is made of the special silicon barrier for the stable electrical discharge, and gives full play to the genius in the removal of the bacteria mold.

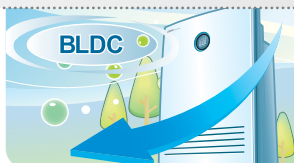
8. Natural Cluster Negative Ions

This air cleaner can materialize a plenty of cluster negative ions which can make the inside air more clean by eliminating the activated oxygen and the static electricity.



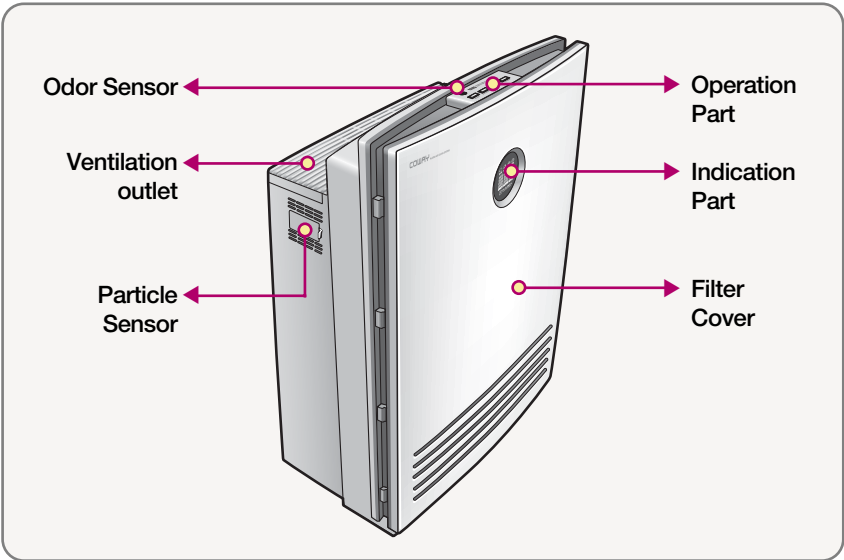
9. Minimum of Expenses

You can cut down your expenses by using BLDC Motor.

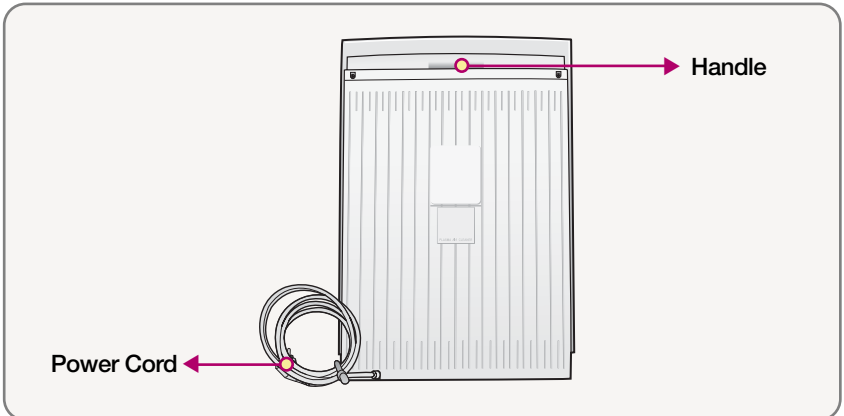


NAMES OF EACH PART

Side



Rear



INDICATION PART



A M

Indicator of Auto/Manual

It indicates whether the unit is operating on automatic mode or manual mode. Operating mode is selected with the 'Auto/Manual' button.



Sleep

Indicator of Sleep Mode

It indicates the unit is operating on sleep mode, and this mode is available on automatic mode.



Cluster

Indicator of Cluster Negative Ions

It indicates the discharges of cluster negative ions with the clean air together.



Speed

Indicator of Air Speed

You can see the condition of the air flow because the revolution speed automatically changes according to the air flow.

Air Flow

Indicator of Air Flow Rate

The unit operates automatically according to the indoor pollution degree on an automatic mode. You can select the mode among the rate from 1 to 4 step, turbo, and rhythm cleaning mode with the 'Air Flow' button on a manual mode.

Rhythm

Rhythm Cleaning Indicator

It is the mode to efficiently get rid of pollutants. The change of the air flow can be efficiently controlled by rhythmical operation of the unit.

Dust

Indicator of Pollution Degree

It is the mode to remove pollutants from the inside air according to the rhythmical operation. It efficiently controls the change of air flow.

Odor

Indicator of Odor

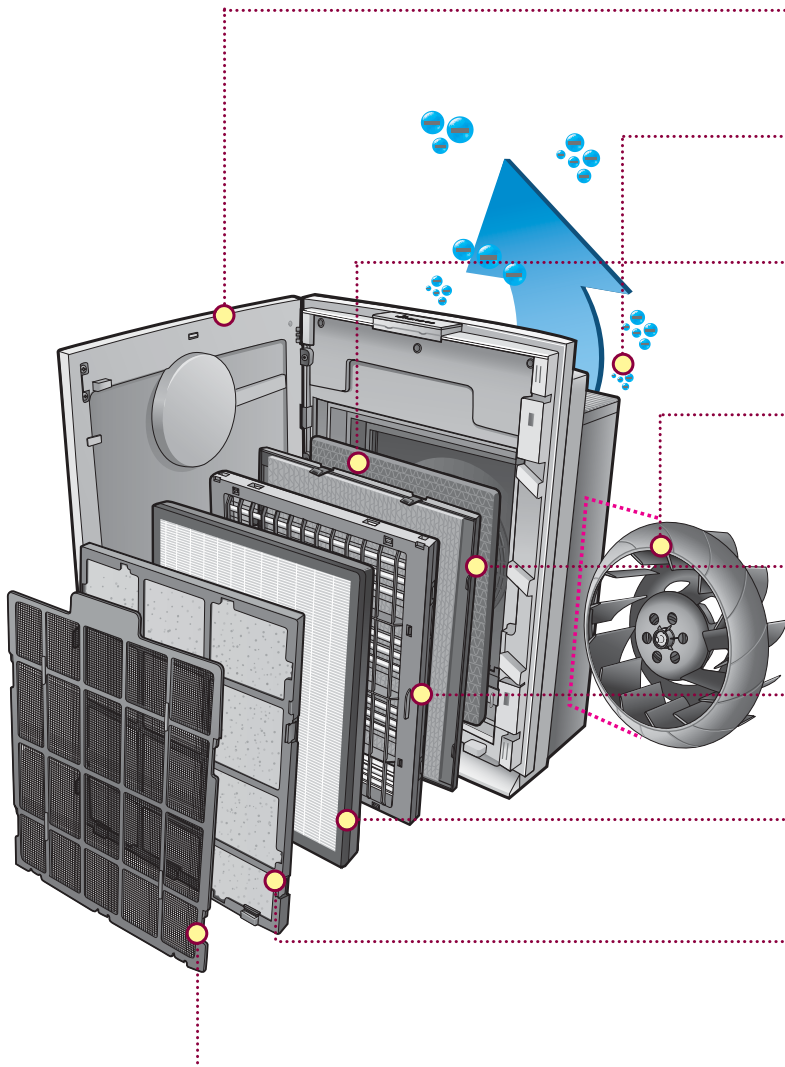
It indicates the degree of the indoor odor pollution.



Indicator of Plasma

When you push 'Plasma' button, it indicates the working of 'Plasma'.

NAMES OF INTERNAL FILTERS



● Filter Cover

It makes filters safe in front of them. The purification ability can be well because the filter cover is designed able to inhale the air from 5 different ways.

● Natural Cluster Negative Ions

It removes the activated oxygen, the static electricity from the inside air and helps to promote health by discharge of the cluster negative ions.

● AC Deodorizing Filter

It is complexly treated by the light catalysis and the inorganic absorbent, so it can control the harmful gas, the bad smell, Formaldehyde which is the cause of Sick House Syndrome.

● Antibacterial Turbo Fan

It generates the pertinent inhalation ability and air flow to the floor space, so it can bring not only the efficient control of pollution but also the prevention of noise.

● Antibacterial Catalysis Filter

The filter is handled by the inorganic absorbent, the light catalysis that is useful to get rid of Formaldehyde such as bad smells, germs, harmful gas.

● RBD Plasma Filter

It is the unique plasma system which can be very useful in not only the minimum of ozone generation but also the removal of the germ and mold.

● HEPA Filter

The HEPA(High Efficiency Particulate Air) filter is used to filter cigarette fumes, bacteria, and minute dust.

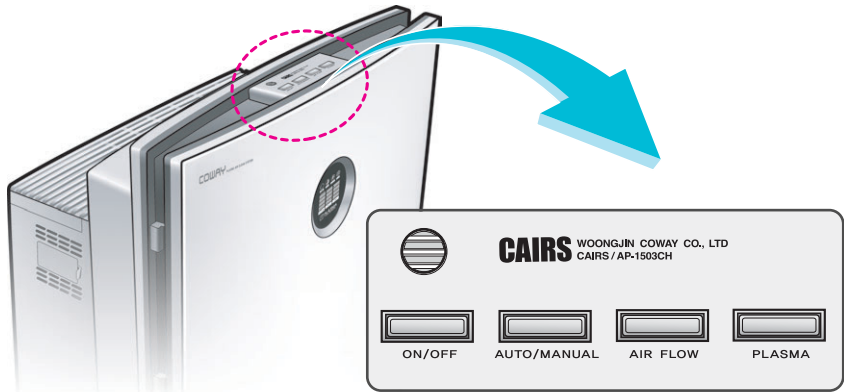
● Medium Filter

It is made of special antibacterial medium to filter large substances, mold and bacteria bigger than $1\mu\text{m}$, and to hold on the ability of the HEPA filter.

● Pre-Filter

It is made of antibacterial material and filters comparatively large dust, hairs, pet dander, mold, and etc.

OPERATION PART



ON/OFF

It is used to turn on and off the unit.

Auto/Manual

The unit starts to work on the automatic mode by pushing '**Auto/Manual**' button and the air flow rate is automatically adjusted through particle & odor sensor depending on the indoor pollution degree. You can choose the manual mode by pushing the button during the auto mode, control the airflow which you want by '**Air Flow**' button.

AIR FLOW

You can select the rate of air flow as you push this button.
(Step1→Step2→Step4→Turbo→Rhythm cleaning. Please use the 'Turbo' operation when the air is highly polluted.

Plasma

When the unit is in 'RBD plasma' mode, it can remove the odor, the germ from the air by pushing '**Plasma**' button.

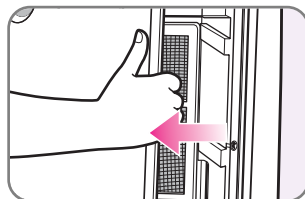
PRE-OPERATING INSTRUCTIONS



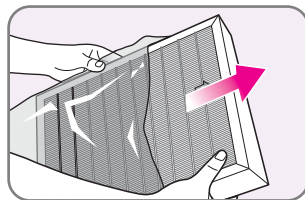
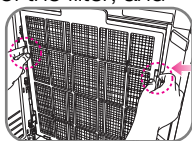
WARNING

Install filters on the unit after removing their packing sheet

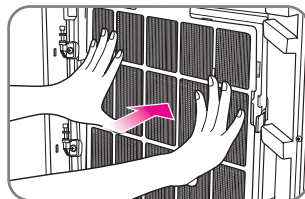
- Step1** Open the filter cover by pulling the right side of the cover.



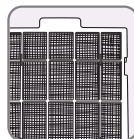
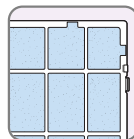
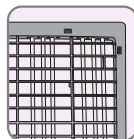
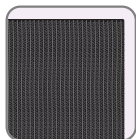
- Step2** Please take out the filter by pushing the both hooks of the filter, and remove its packing sheet.



- Step3** Please install filters according to the following order. AC deodorizing filter→antibacterial catalysis filter→RBD plasma filter→HEPA filter→medium filter→pre filter(Check the insert direction of filters and make the both hooks fixed into the unit.)

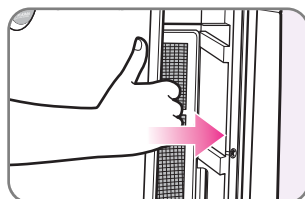


The Insert Direction



1 AC Deodorizing filter 2 Antibacterial Catalysis filter 3 RBD Plasma filter 4 HEPA filter 5 Medium filter 6 Pre filter

- Step4** Please close the filter cover.

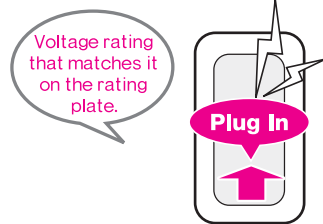


HOW TO USE

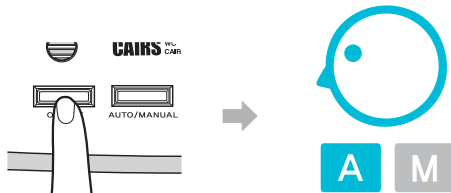
In case of manual mode

Select manual mode with the "Auto/Manual" button after turning on the unit.

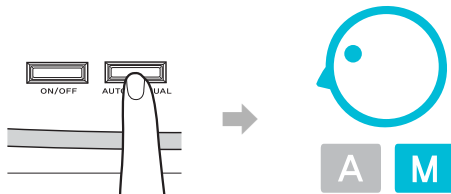
- Plug the power cord to the voltage rating that matches on the rating plate.



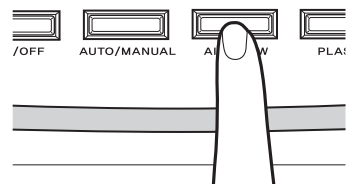
- It operates on automatic mode by pushing the 'ON/OFF' button.



- Push the 'Auto/Manual' button.
(The 'Manual' light is on.)



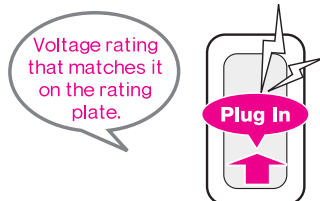
- Set up the air flow rate by pushing the 'Air Flow' button.



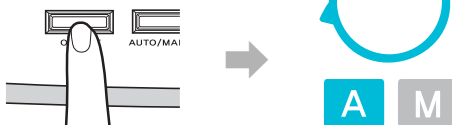
In case of automatic mode

The "Auto" light is lighting in the indication part after turning on the unit.

- Plug the power cord to the voltage rating that matches on the rating plate.



- If you push the 'ON/OFF' button, the unit operates on automatic mode according to the indoor pollution degree. (The 'Auto' light is on in the indication part at first.)

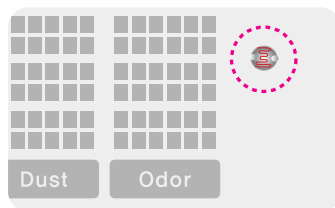


The silent operation at night

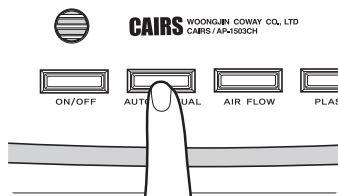
This function can only operate on automatic mode.

※ If the pollution of 1step is lasting over 10 minutes, the air flow is lowered to 50% of 1 step.

- It is a function set to be automatically transferred to the sleep mode (Air flow rate keeps at the ultra low fan speed.) through a sensor detecting the luminosity of light around the unit.



- If you select a manual mode or the light density is strong, sleep mode is automatically set off.

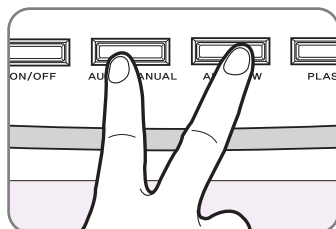


HOW TO USE

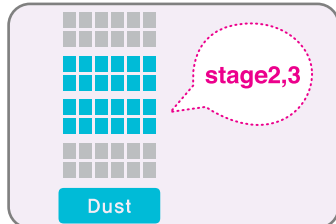
How to adjust the pollution sensitivity

※ The unit is set at a standard sensitivity. In case that pollution degree is maintained at the highest or the lowest level for over 2 hours after the unit starts to work, please adjust the sensitivity of sensor as the following the way below.

Step1 Push both the 'Auto/Manual' and 'Air Flow' just over 2 seconds.

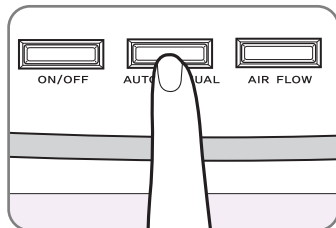
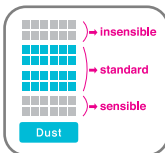


Step2 The "Pollution" light is out, and the light stick of indication is on as in the drawing.

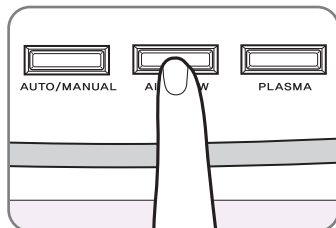


Step3 You can adjust the sensitivity by pushing 'Auto/Manual' button.

stage1:sensible
stage2,3:standard
stage4:insensible



Step4 You can confirm the sensitivity, which you did, by pushing the 'Air Flow' button.

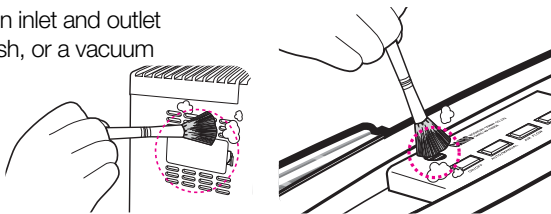


CLEANING METHOD

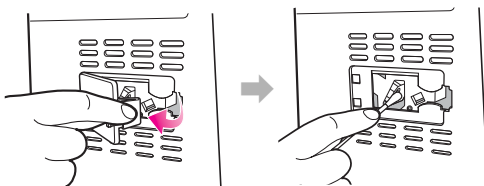
- ⚠ WARNING**
Unplug power plug before cleaning.

Cleaning a Particle Sensor & Odor Sensor (Every 2 months)

- Please clean the ventilation inlet and outlet of sensors with a soft brush, or a vacuum cleaner.

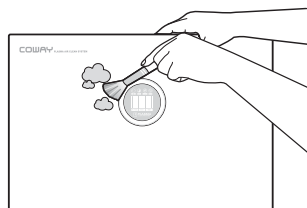


- Please wipe the lens with a cotton swab soaked with water and get rid of moisture by using dry one.



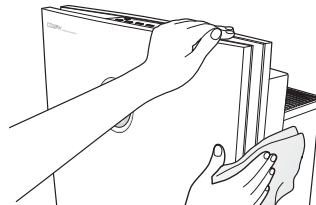
Filter Cover Cleaning

- Please remove the dust clung to surface with a soft brush. Clean the unit with a wet cloth, if the unit is severely contaminated. (Do not use an abradant.)



Body Cleaning

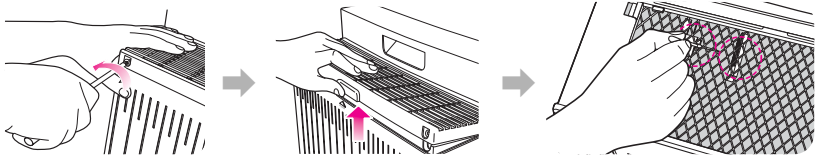
- Please wipe it with a soft and dry cloth. In case that it is severely contaminated, wipe it with a little bit wet cloth. (Do not use an abradant.)



CLEANING METHOD

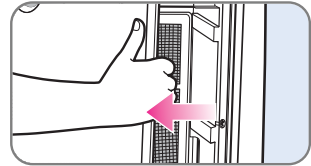
Cluster Ion Electrode Part Cleaning(Every 2months)

- Please get rid of dirties on the charged body and the electric discharge pin of the cluster with soft brush of cotton swab ion after opening a ventilation grill with a screw driver.

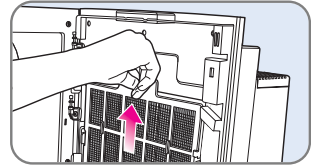


Pre-Filter Cleaning(Every 2~4 Weeks)

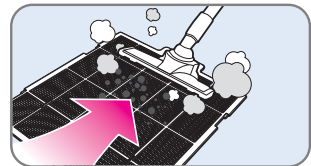
- Please open the filter cover by pulling forward the right side.



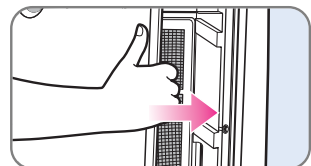
- Please pull the pre-filter up as in the drawing.



- Please remove dust with a vacuum cleaner or water.



- Please install the filter to make the both hooks fixed into the unit, and then close the filter cover after complete dry of the filter.





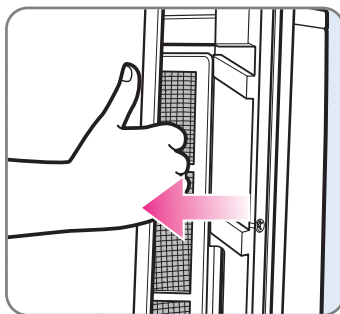
WARNING

Unplug power plug before cleaning.

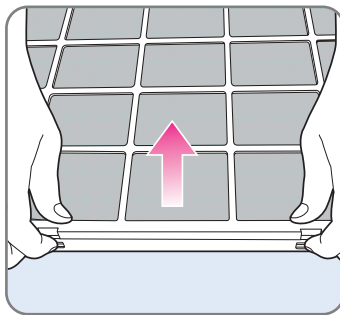
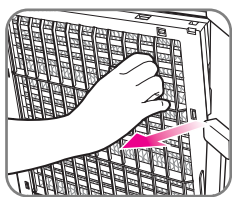
Install the RBD Plasma filter and the Antibacterial Catalysis filter in the unit after complete dry.

RBD Plasma Antibacterial Catalysis Filter

- Please open the filter cover by pulling the right side of the cover.

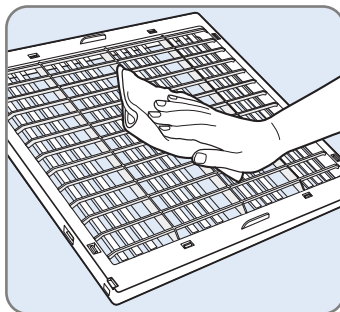


- Please take out the plasma antibacterial catalysis filter, and then divide the filter into two pieces by pushing both hooks of the filter.



- When you clean the RBD plasma filter, please wipe the tungsten wire, the dirties on the electrode with a wet cloth and then make it dry with a dry cloth.

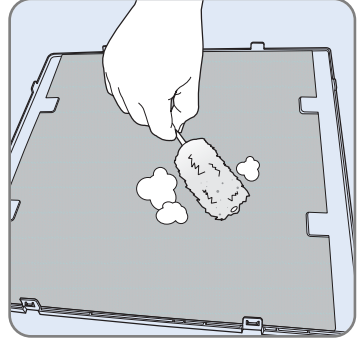
- ※ Never splash the water in the unit or soak it in water.
- ※ Be careful about the down of the tungsten wire.
- ※ Please completely dry, in case that the water gets into the inside of the filter. (If the inside is taken by water, please use after dry over 12 hours.)



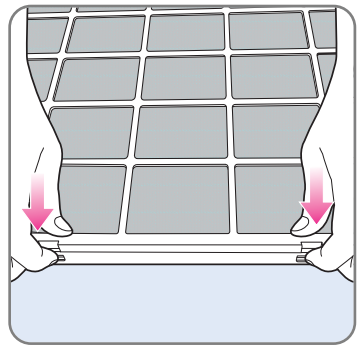
CLEANING METHOD

- Please clean the antibacterial filter with the brush or the vacuum cleaner after the division from the RBD Plasma filter.

- ※ Be careful of damage to the filter.
- ※ Even though the filter may get damaged such as a transformation and minor breaks, there is no problem for use.

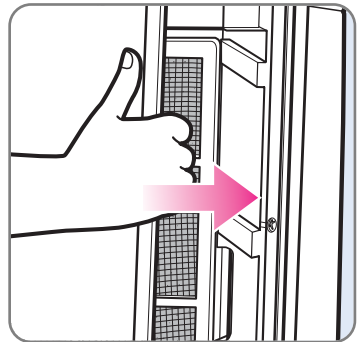


- Please put the antibacterial catalysis filter together with RBD plasma filter.



- Please close the filter cover after putting the filter in the unit.

- ※ Please check the Installing Direction of RBD plasma filter.



FILTER REPLACEMENT

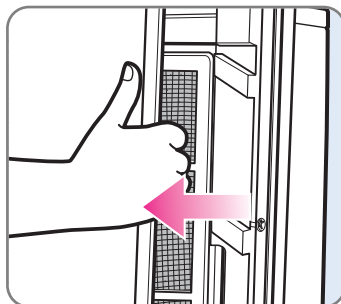
WARNING

Unplug power plug before filter replacement.

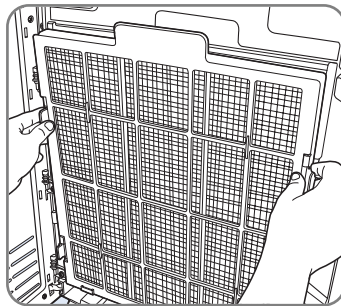
WARNING

The period time of filter replacement should be different according to the surrounding pollution degree of pollution, time of using.

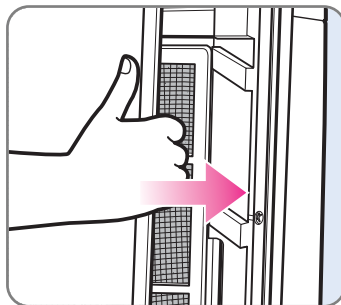
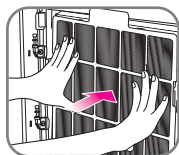
- Step1** Open the filter cover by pulling the right side of the cover.



- Step2** Separate filter that you want to replace from the filter case.



- Step3** Please put the filters in the unit with the opposite direction, and then close the cover after filter replacement.



FILTER REPLACEMENT

Estimated Time of Filter Replacement and Cleaning

Item	Period Time	Method
● Pre-filter	Every 2~4 weeks	Cleaning
● Medium filter	Every 2months	Replacement
● HEPA filter	Every year	Replacement
● RBD Plasma filter	Every 2months	Cleaning
● Antibacterial Catalysis filter	Every 6months Every 2 years	Cleaning Replacement
● AC Deodorizing filter	Every 2 years	Replacement

※ The period time of filter of replacement is based on the use of 24hours a day at step 1 mode. And it could be different according to the surroundings.




BEFORE ASKING A/S

Check the followings before requesting for A/S.

It can not operate properly because of trivial problems or a lack of user's experience even if it is not out of order. In those cases, please check the followings carefully to solve problems. Please call A/S center if you have any problems except the followings.

Troubles	Points to be checked	Troubleshooting
No air comes out	Is the plug inserted?	Plug the power cord to the voltage rating that matches on the rating plate.
	Are the indication lights off?	Turn the power on and select the function which you want.
	Is the electric power off?	Operate it after the power is on.
The air flow rate does not change.	Is the 'Auto/Manual' light of the indication part on?	In the automatic mode, the air flow rate could not selected by hand-operating.
	Is the room dark?	In the sleep mode, you can not operate an air flow rate.
The output of the airflow is considerably weakened.	Is the time of the pre-filter cleaning passed?	Clean the filters or replace them after checking the period for replacement.

BEFORE ASKING A/S

Troubles	Points to be checked	Troubleshooting
The degree of pollution does not change.	Is there dust around the particle sensor lens?	Remove the dust. (Refer to Page 18)
	Is the degree of pollution indicated to the high for a long time?	Adjust the sensitivity of particle sensor to the low. (Refer to Page 18)
	Is the degree of pollution indicated to the low for a long time?	Adjust the sensitivity of particle sensor to the high. (Refer to Page 18)
There is a bad smell in a ventilation outlet.	Has the period of filter replacement and cleaning passed?	Clean filters or replace them.
 is twinkling	Is the RBD Plasma filter systematically put in the unit? Is the tungsten wire down?	Install the RBD Plasma filter on the unit after checking its formation. Please request for A/S.
Is the particle sensor or the odor sensor is twinkling	Please request for A/S	
In case other functional defects occur.	After checking problems, pull out the electric plug and request for A/S.	

WARRANTY INFORMATION




Product Guarantee

- Parts and components shall be replaced free of charge within the guarantee period if the defects occur due to manufacturing defects in normal operation.
- Contact us in case of breakdown.
- In the following cases, repair work shall be charged even within the guarantee period.
 - ▶ Breakdown caused by careless operation or unreasonable repair and renovation.
 - ▶ Breakdown caused by nonperformance of the instructions specified in the manual.
- Even after the expiration of guarantee period, it is possible to apply for charged repair.
- Present this Letter of Guarantee whenever repair is needed.
- This Letter of Guarantee is valid only in domestic where you buy this product.
- Keep this Guarantee carefully as it is not re-issued.

Product Name	Coway Air Cleaner	Guarantee Period
Model	AP-1503CHE	
Serial No.		
Date of Purchase		
Guarantee Period	From	To
Customer's Address		
Customer's Name	Tel.	

Please contact our customer's service center in case you are not satisfied with our A/S service.

- Nationwide A/S Call :
- Customer counselling Center Call: _____ Fax : _____

 In case any other filters or parts which are not genuine products of Coway are used, Coway is not responsible for any problems related to air quality.

Coway Co., Ltd
658 Yoogoo-Ri, Yoogoo-Eub, Gongju-Si, Choongnam Province, Korea

Free Manuals Download Website

<http://myh66.com>

<http://usermanuals.us>

<http://www.somanuals.com>

<http://www.4manuals.cc>

<http://www.manual-lib.com>

<http://www.404manual.com>

<http://www.luxmanual.com>

<http://aubethermostatmanual.com>

Golf course search by state

<http://golfingnear.com>

Email search by domain

<http://emailbydomain.com>

Auto manuals search

<http://auto.somanuals.com>

TV manuals search

<http://tv.somanuals.com>