

# Coway

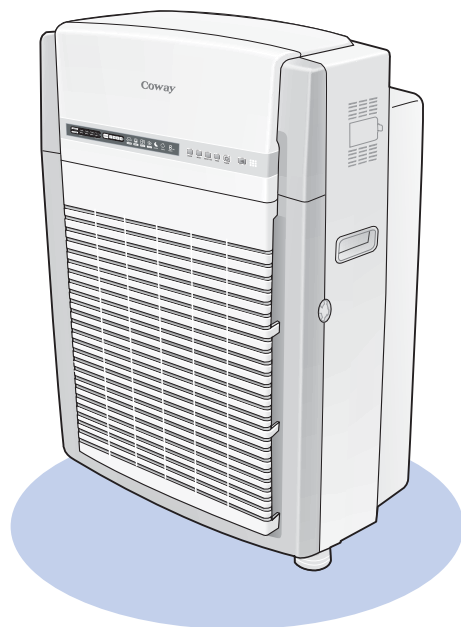
## Air Purifier AP-2505CH User's Manual

Do not fail to read this user's manual before you use this air purifier and keep it within ready reach.

Looks Good 

Easy 

Smart 



## Dear customers of Coway

Thank you for using Coway Air Purifier. For accurate use and maintenance of the product, please thoroughly read and keep this users' manual, which will provide you with various assistances. Please refer to the contents of this users' manual if the product does not function properly or if you have any questions in relations to the use of this product. Also, please note that we are not responsible for any accidents caused by not following the contents of this users' manual.



## Table of Contents

### 1. Caution for Safety

Power .....	03
Installation .....	04
During Use .....	05

### 2. How to Use

Advantages of Air Purifier .....	07
Product Parts .....	09
Display Panel .....	11
Control Panel .....	12
Internal Filters .....	13
Preparation to Use .....	15
How to Use .....	17
Cleaning .....	21
Filter Replacement .....	24
Air and Health .....	26

### 3. Self Diagnosis

Before Requesting for After Sale Service .....	28
--	----

### 4. Customer Service

Product Specifications .....	29
Warranty .....	30

## Caution for Safety

The following contents are for you to keep safety and to prevent damages on properties in using of product. Please read carefully and make sure to use the product properly.



### Danger

If the instructions are not properly observed, it may cause death or serious damages.



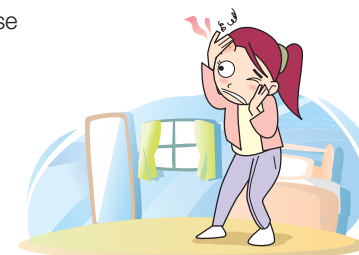
### Warning

If the instructions are not properly observed, it may cause significant injury to human body or physical damages.



### Caution

If the instructions are not properly observed, it may cause slight injury to human body or physical damages.



# Caution for Safety

The following contents are for you to keep safety and to prevent damages on properties in using of product. Please read carefully and make sure to use the product properly.

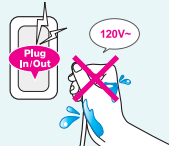
## Power



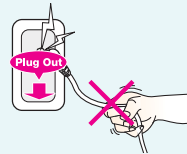
Danger

This product uses 120V~ only. Do not pull or insert power cord from or to power outlet with wet hand.

There is a danger of electric shock or fire.



Do not forcefully pull out power cord. There is a danger of electric shock and fire.



Do not continuously insert and pull power cord. ※When power plug is damaged, replace it by the manufacturer, sales agency or properly qualified technician before using product.

There is a danger of electric shock and fire.



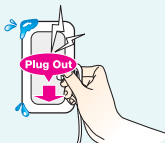
If power cord is damaged, do not attempt at replacing yourself. Contact our service center to replace the damaged power cord.

There is a danger of electric shock and fire.



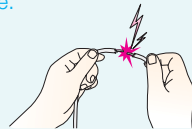
If the power was in contact with water, pull out power cord and completely dry it before using product.

There is a danger of electric shock and fire.



Do not connect or process power line at your own will.

There is a danger of electric shock and fire.



Do not insert power cords of a number of electronic products into a single power outlet. Make sure to use individual power outlet.

There is a danger of fire.



Pull out power cord when repairing and inspecting product or replacing parts.

There is a danger of electric shock.



Danger

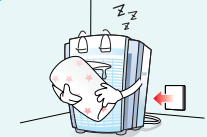
Do not forcefully bend power cord or place heavy objects to cause damage or disfiguration.

It may cause electric shock and breakdown of product.



When not using product for a long time, leave the power cord unplugged.

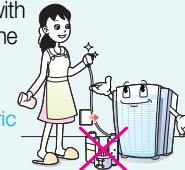
There is a danger of fire.



Wipe off any dust or moisture on the contact part between power plug and pin.

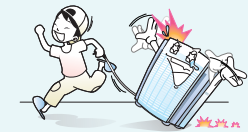
※Do not wipe with benzene, gasoline or petroleum.

There is a danger of electric shock and fire.



When moving product, lift it by holding the handles at the side or move it by using wheels at the bottom.

There is a danger of electric shock and fire.



Clean product after unplugging power cord.

It may cause electric shock and fire.

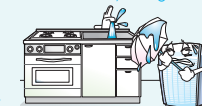


Warning

## Installation

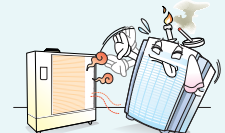
Do not install product in areas where moisture, water spatter (rainwater) and steam is generated.

It may cause electric shock, danger of fire and deterioration of product performance.



Do not install product in places near a heating device or do not place a lit candle or lit cigarette, etc. on top of product.

There is a danger of fire.





# Caution for Safety

The following contents are for you to keep safety and to prevent damages on properties in using of product. Please read carefully and make sure to use the product properly.

## Installation



Caution

Do not use product under direct sunlight.

It may cause discoloration or fading of product.



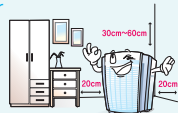
When the product is used in a restaurant where odor, smog, and oil are easily generated while cooking, wash the oil-mist filter frequently.

When it does not clean the oil-mist filter, It may deteriorate the product performance as well as lead contamination of the filters.



Install product with a gap of at least 20cm to the side and 30cm ~ 60cm to the top.

It may pollute wall surfaces and objects near the ceiling.



Do not install product on a slanted surface. Do not forcefully exert impact or weight on product.

It may cause injury to human body or damage to product.



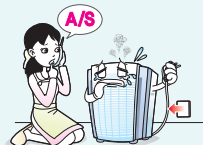
**During Use** ※ When using product in a closed space for a long time, it may cause drying of the surrounding air.



Danger

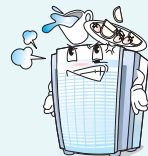
When strange noise, burning odor or smoke is detected from product, unplug power cord and contact service center immediately.

There is a danger of fire.



Do not place a container holding water, chemicals, food items, small metal items or heavy items on top of product.

When foreign substances are flown into the inside of product, it causes a danger of electric shock, fire and injury to human body.



Danger

Do not insert sharp metal objects of chopstick, etc. into suction hole or blowhole. Also, do not block suction hole or blowhole with paper or cloth, etc.

There is a danger of electric shock, fire and injury to human body.



Prevent children from hanging on or climbing product.

There is a danger of injury to human body.



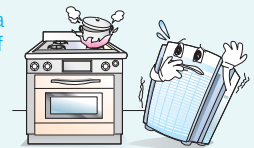
Do not insert sharp objects of awl, etc. into pollution detection sensor.

It may cause electric shock and breakdown of product.



Do not use or store combustible gas or inflammable substances, etc. near product.

There is a danger of fire.



Warning

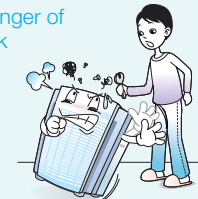
Do not submerge product in water.

There is a danger of electric shock and fire.



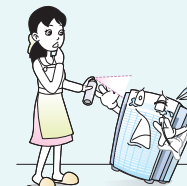
Do not open, repair or modify product at your own will.

There is a danger of electric shock and damage to product.



Do not spray inflammable substances of insecticide or aromatics into suction hole.

It may cause fire or deterioration of product performance.



Do not use the product in factories or industries where oil is frequently consumed.

It may cause fire or deterioration of product performance.



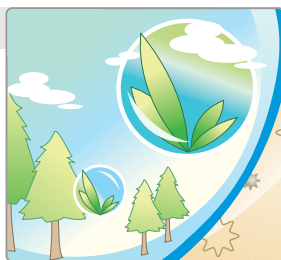


# Advantages of Air Purifier

## AP-2505CH Air Purifier

### 1 Outstanding Air Purification Function

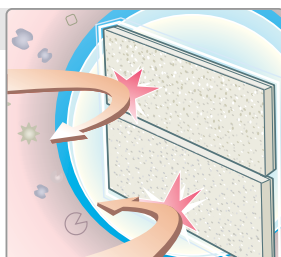
With powerful purification system to quickly eliminate fine dust particles floating in air, the high-quality HEPA filter and SMD OPTION filter of reinforced anti-bacterial function safely protect you from dust and bad odor.



### 2 SMD OPTION Filter system

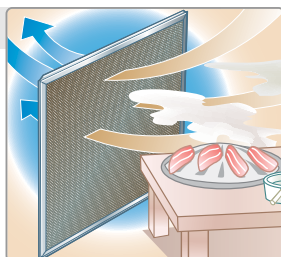
It adopts the customized filter system that customers can select a filter they want among the four types, anti-legionella, anti-flu, double-deodorizing and antifungal.

※ Anti-flu filter would be installed originally when manufactured. (Subject to change another customized filter without prenotification.)



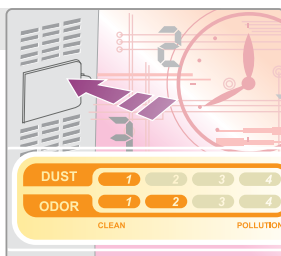
### 3 Oil Mist Filter Effect

With the adopted oil-mist filter in AP-2505CH, it removes any contaminating substance effectively in a restaurant that generates odor, smog, oily material frequently.



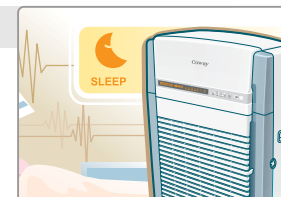
### 4 4-level Automatic Operation with Dual Pollution Detection Sensor

With dust pollution sensor and odor pollution sensor, the pollution status is detected on the real-time basis. When automatic operation mode is selected, airflow is automatically controlled in accordance with pollution level in the surrounding environment. Thus, power consumption is minimized.



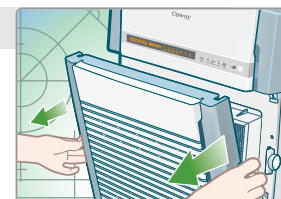
### 5 Sleep Mode Operation

Detecting light during nighttime, operation mode is automatically converted to sleep mode. So, quite and pleasant environment is maintained during sleep. (Operation selection function)



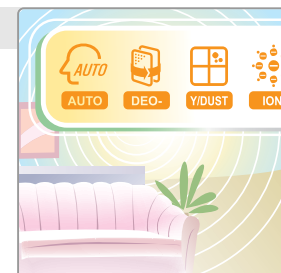
### 6 Customer-centered Safe Design

In order to secure safety of our customers, door switch automatically stops all operations when the front door is opened. Also, the safely designed suction hole and blowhole prevent the danger of accident.



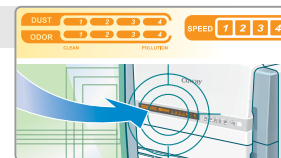
### 7 A Variety of Operation Modes

The specialized functions such as the sandy dust mode that removes dust rapidly, the deodorizing mode that reinforce the function to remove bad odor, the automatic mode that detects the level of dust and contamination simultaneously to automatically operate the system, and the high-speed mode that maintains the clean state quickly to satisfy the need of our customers.



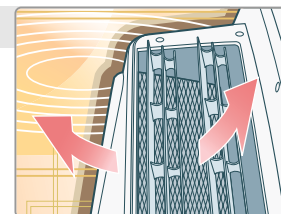
### 8 Pollution Level and Operation Indication Function

A large-sized LED display window enables users to easily check operation status and changes in the level of indoor air pollution.



### 9 Circulation Function

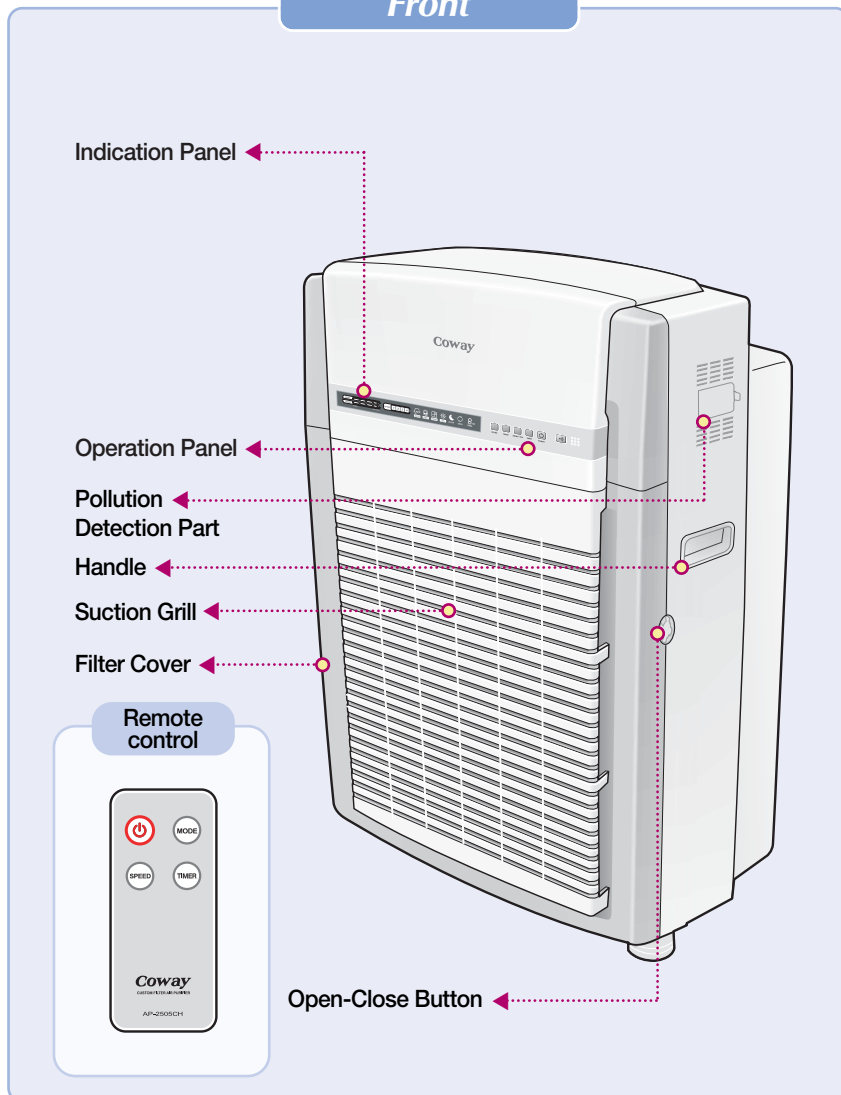
When product is not in operation, blowhole is closed to prevent dust and other foreign substances from flowing inside. Blowhole is opened only when product is operation to prevent danger of accident. Also, airflow can be controlled in forward/ backward direction.



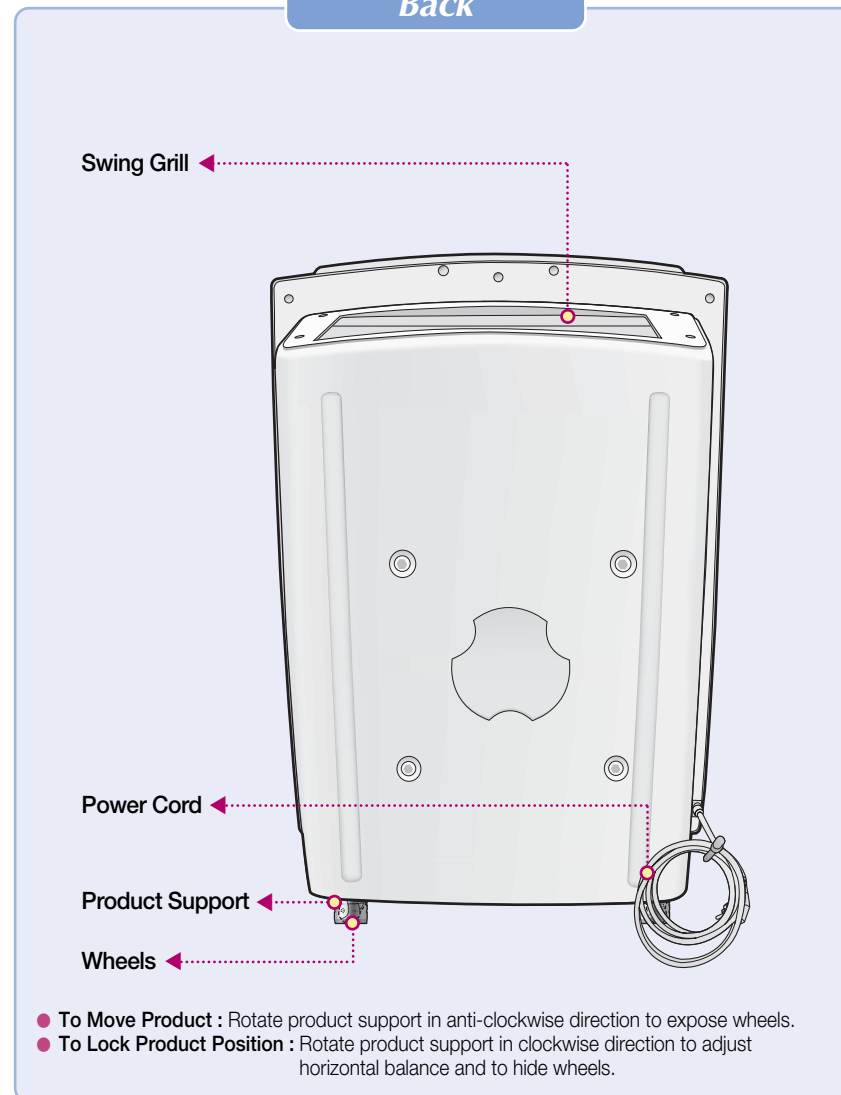


# Product Parts

Front



Back





# Display Panel

**Pollution Level Indication Lamp**  
It displays indoor pollution level measured by dual pollution detection center on real-time basis.

**Fan Speed Indication Lamp**  
It display fan speed in 1~4 levels. In automatic operation mode (including yellow dust mode and deodorization mode), fan speed is automatically controlled in accordance with indoor pollution level. In manual mode, fan speed can be selected by pressing speed selection button.

**Mode Indication Lamp**  
It indicates the current operation mode. Operation mode can be selected by using various mode buttons.

**Sleep Mode Indication Lamp**  
This lamp indicates the sleep mode operation of air purifier during nighttime. Sleep mode can be selected with switch setting.

**Anion Indication Lamp**  
Anion indication lamp is turned on together with the operation of air purifier. It indicates the discharge of anion together with purified air.

**Overall Circulation Indication Lamp**  
Evenly providing pure air to the indoor space, this function rapidly reduces pollution level. This function can be selected with circulation/anion button.

**Operation Preset Indication Lamp**  
When operation preset button is pressed, operation preset indication lamp is automatically lighted and operation time can be prearranged per each hour from 1 to 8 hours. When air purifier begins operating, the operation preset indication lamp indicates reduction of the preset operation time by 1 hour.

# Control Panel

**SPEED Selection Button**  
Pressing airflow selection button, airflow is controlled in 4 levels in the order of level 1 → level 2 → level 3 → level 4.

**Light Detection Sensor (CDS)**  
When light detection sensor (CDS) detects light in the surrounding area, the operation mode is automatically converted to nighttime noise-controlled operation mode.

**Mode Selection Button**  
Mode selection button is used when making mode selections. Pressing power button, product is operated in automatic mode. Also, in accordance with the pollution level detection by dual pollution detection sensor, the airflow is automatically controlled. Pressing mode button, selection is made out of the three modes in the order of automatic → deodorizing → yellow dust. (When in automatic mode, airflow selection cannot be made.)

**TIMER Button**  
Pressing operation preset button, product run can be prearranged per each hour from 1 to 8 hours.

**SWING / ION Button**  
Pressing circulation/anion button, airflow is changed as the swing grill at the back of the product rotates in forward/backward movement. Also, when pressed for 2 or more seconds, the circulation/anion button either selects or clears the anion function.

**Power Button**  
Start/stop of air purifier can be selected.



# Internal Filters

## ● Filter Cover

Sophisticatedly designed with low resistance against air inflow, filter cover protects filters from the front side.

## ● Oil-Mist Filter

The Oil Mist filter is good for removing large size dust, hair of animals, ashes of cigarette as well as small particles of oil.

## ● SMD(Special Medium & Deodorizing) OPTION Filter

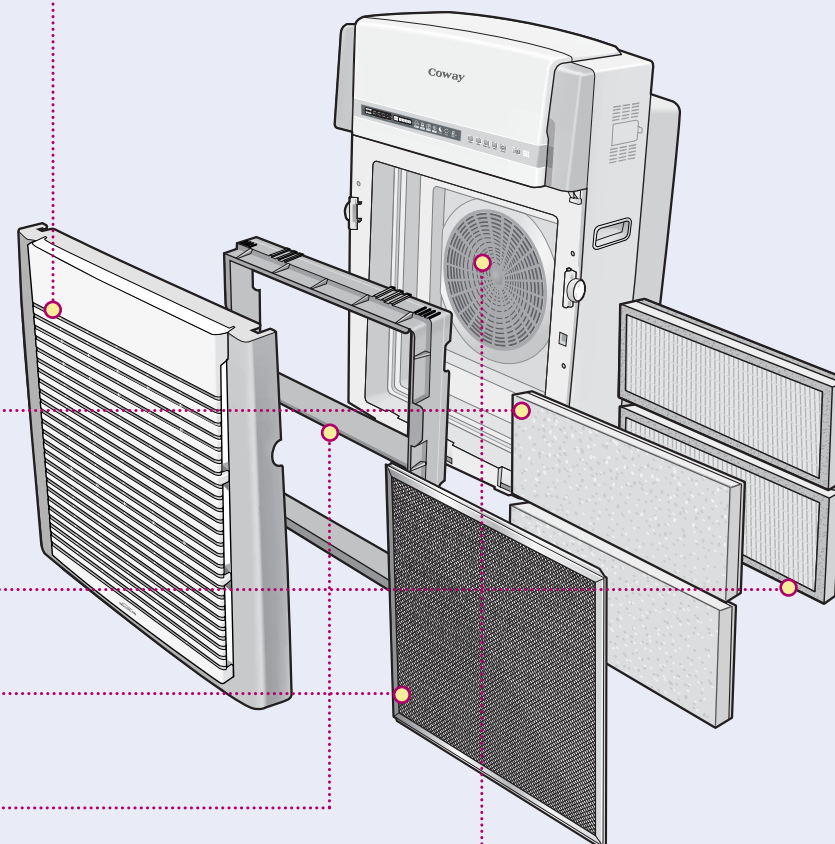
A customer can select a filter from the 4 different kinds of filter (Anti-legionella, anti-flu, double-deodorizing and antifungal) depending on her/his need. The antifungal filter inactivates germs and mold to filter those out. The double-deodorizing filter has an additional filter that specialized in deodorizing and is effective to a place with unpleasant odor. The anti-legionella filter inactivates Legionnaires and allergen substances and filters them out. And the anti-flu filter removes the cold virus (H1) and allergen substances.

## ● HEPA Filter

Using of high-quality HEPA (high efficiency particulate air) filter produces outstanding function to eliminate fine dust particles. Also, with the composite anti-bacterial and anti-mold effects of nano silver and catechins remove cigarette smoke, virus, germs and fine dust particles.

## ● Filter Case

## ● Suction Hole



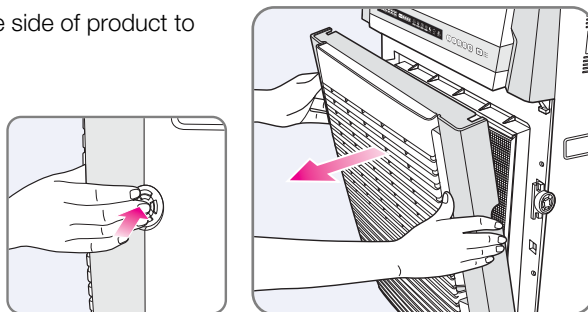




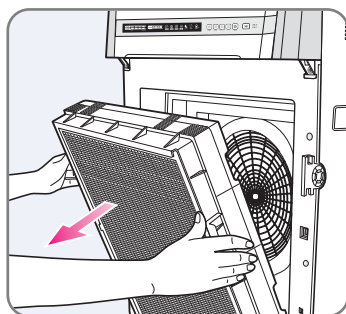
## Preparation to Use

**!** All filters with an exception of oil mist filter(SMD OPTION filter, HEPA filter) are wrapped in plastic. Remove plastic before installation to product.

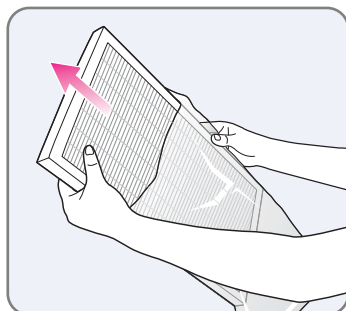
- 1 Press button on the side of product to open filter cover.



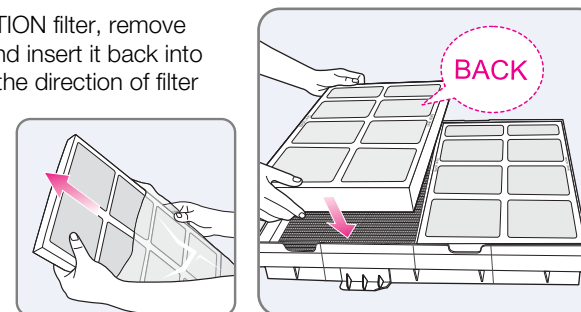
- 2 Pull out filter case and remove it.



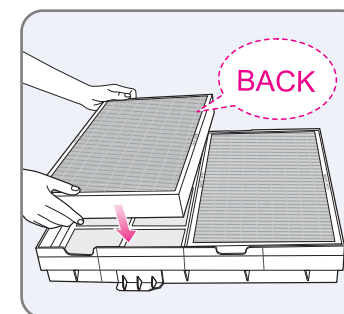
- 3 Take out HEPA filter and remove plastic wrapping.



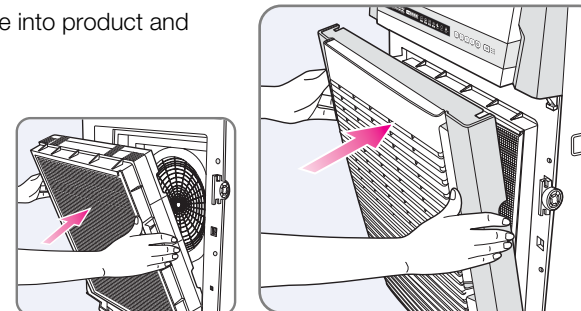
- 4 Take out SMD OPTION filter, remove plastic wrapping and insert it back into filter case. (Check the direction of filter insertion.)



- 5 Push in HEPA filter in the direction or arrow to install it into filter case. (Check the direction of filter insertion.)



- 6 Assemble filter case into product and close filter cover.





# How to Use

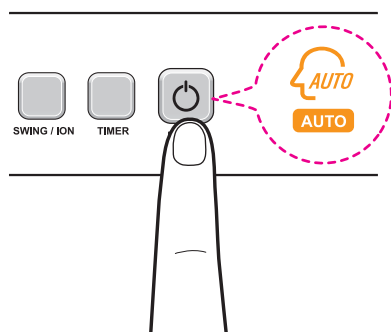
## Automatic Operation-

Press power switch to display AUTO' on display panel.

- Plug power cord into power outlet.  
This product is for 120V~ only.



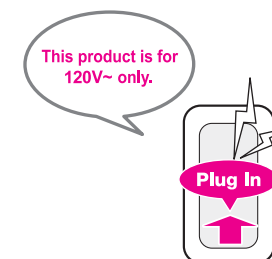
- Turning on power switch, product is operated in automatic mode in accordance with the level of indoor pollution.  
'AUTO' is displayed in display panel.



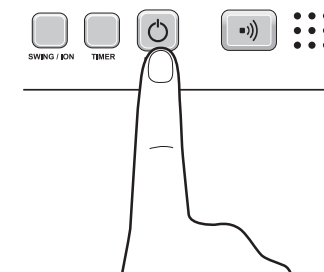
## Manual Operation-

Press power switch and select manual operation mode with airflow selection switch.

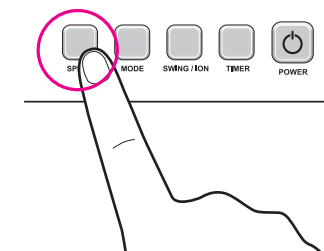
- Plug power cord into power outlet.  
This product is for 120V~ only.



- Turning on power switch, product is operated in automatic mode.



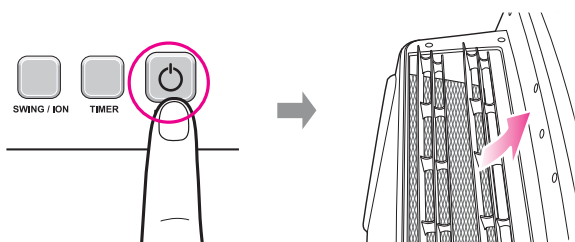
- Press airflow selection button.



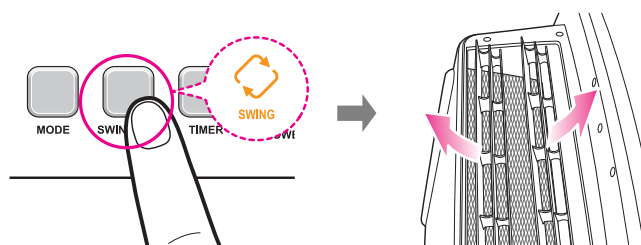
# How to Use

## Circulation

- 1 Turn on the power and select the desired operation mode.



- 2 Lightly press circulation button. Swing grill moves in forward/ backward direction to control the level of airflow. To lock the position of swing grill, lightly press circulation button once again.

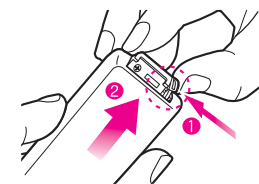


# How to Use

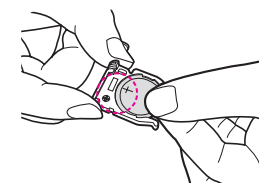


## Preparing remote control and how to use

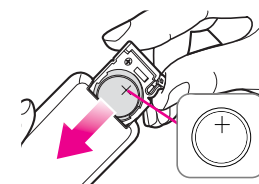
- 1 Push batteries container hook on the bottom at the back side of the remote control in 1 direction and at the same time pull out the batteries container in 2 direction.



- 2 Insert enclosed batteries in its appropriate positions at the container according to it's + positions at the hook.  
Make sure + directions of the batteries are checked.



- 3 Thrust in batteries container with batteries into the remote control inlet until you hear the clicking sound.



※ Use the same procedure above when switching batteries.

### ▶ While using the remote control

- If the remote control doesn't work, check batteries lifespan.
- If necessary, switch batteries of CR2025.
- If you don't use the remote control for a long time, be careful to pull out the battery from it.
- The lifespan of remote control depends on the usage frequency.

### ▶ How to use remote control.

- If you use the remote control, place it toward the receiving part of a product.
- The obstacles between the product and remote control may prevent the remote control from working.
- Do not apply force to the remote control.
- Do not place the remote control in a wet place or under the direct sunlight or near heaters.



# Cleaning



**In sleep mode operation, if indoor purification (pollution level 1) continues on for more than the specified time period (app. 1 hour), motor is automatically stopped to minimize power consumption.**

## What Is Sleep Mode Operation? (Available only automatic mode and yellow dust mode)

- Using CDS sensor to detect brightness in the surrounding area operation mode is automatically converted to nighttime noise-controlled mode (airflow level 1).



- Sleep mode operation is automatically cleared when manual mode is selected or brightness of the surrounding area increases.



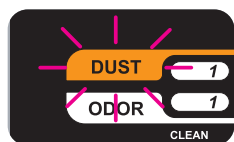
## Particle Sensor

*(Upon product shipment, particle sensors are adjusted to normal level. When the level of pollution remains at its height even after running the air purifier for more than 2 hours in highly polluted conditions or when it maintains lowest level for more than an hour even in highly polluted conditions, use the following methods to adjust the sensor before use.)*

- Press both select "SWING/ION" and "SPEED" buttons at the same time for 2~3 seconds while the unit is in operations.



- The "DUST" indicator at the front of the product flickers.



- Press "SPEED" button and adjust to desired sensor mode. Sensor level will be displayed on the dust pollution display panel.

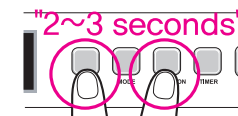
Sensitive	Average	Insensitive
level 1	level 2,3	level 4



**Always make sure to unplug power cord prior to filter cleaning.**

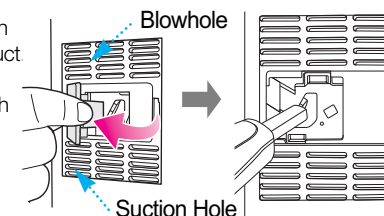
- Select desired sensor level and press select "SWING/ION" and "SPEED" buttons at the same time for 2~3 seconds. The display panel will then resume normal operations and sensor level will be displayed accordingly

When no buttons are selected for 10 seconds, the corresponding value will automatically be given.



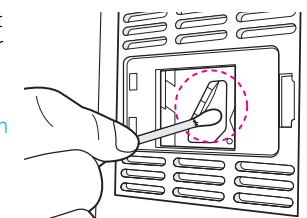
## Cleaning of Dust Pollution Detection Sensor (To be cleaned once every 2 months)

- First of all, open the cover of the contamination detecting sensor on the right side of the product. Clean the air inlet, outlet, and around the dust contamination detecting sensor with soft brush or vacuum cleaner.



- Second of all, clean the lens, dust inlet, and the dust outlet with wet cotton swab, and then remove water with dry one.

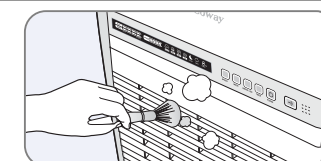
If it is not cleaned periodically, it can be a major cause of the performance deterioration of the dust contamination detecting sensor. The cleaning period is subjective to the air cleaner using environment, thus, clean it more frequently if the cleaner is used in a dusty area.



## Cleaning of Filter Cover

- Remove dust from surface with vacuum cleaner or soft brush, etc.

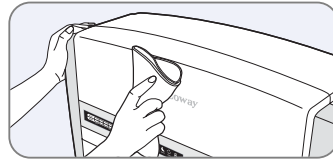
In case of severe pollution, wash filter cover with clean water and completely dry it before use.



# Cleaning

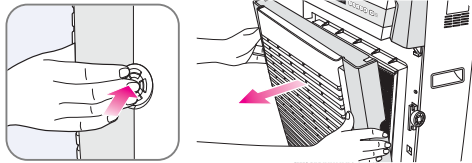
## Cleaning the Main Body of Product

- Wipe with soft and dry cloth.  
*In case of severe pollution, wipe with slightly wet cloth. (Do not use abrasives.)*

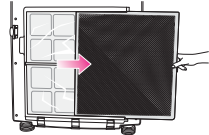


## Cleaning of Oil Mist Filter (To be cleaned once every 2 ~ 4 weeks)

- Press button on the side of product.  
Pull filter cover forward to open it.

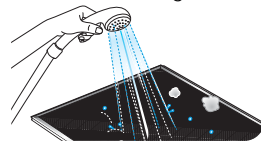


- Take the oil mist filter pulling it to the right.



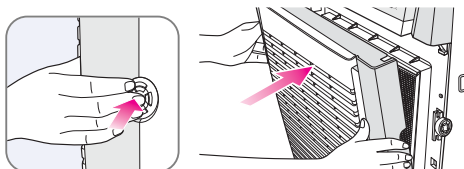
- When there is large size dust or usual dust on the oil mist filter, clean it with water from a shower tap. But if it is seriously contaminated or oily, soak the filter in the detergent dissolved water for 30 minutes and then rinse it with water (You may spray detergent dissolved water to get rid of oil on the filter and then rinse it later).

*Be aware of the sharp edges and do not give too much pressure on the filter. It may be a major cause for malformation of the filter.*



- Completely dry the oil mist filter and assemble it in the reverse order.  
Put the filter cover in its hinge and push it backward pressing the buttons on the sides.

*The remainder of water may be a major cause of unpleasant odor on the filter.*



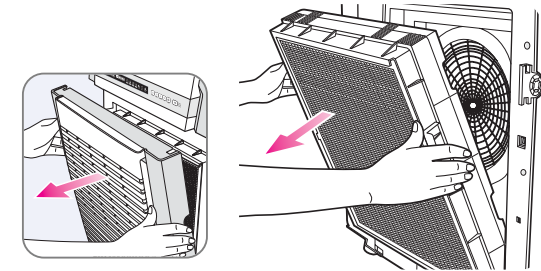
# Filter Replacement



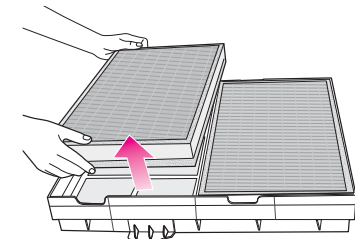
- ⚠ *Always make sure to unplug power cord prior to filter replacement.*
- ⚠ *The time of filter replacement may differ according to pollution level and the period of use.*

## How to Replace Filter

- 1 Open filter cover and remove filter case.



- 2 Take out filter to be replaced from filter case.



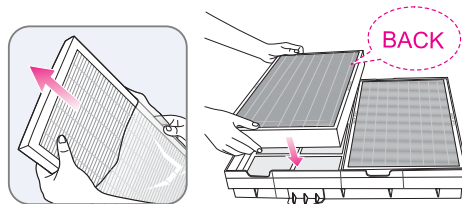


# Filter Replacement

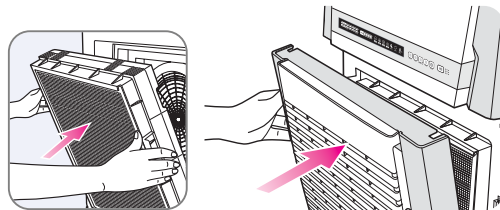
## How to Replace Filter

- 3 SMD OPTION Filter & HEPA Filter: Remove plastic wrapping of new filter and insert the new filter into place. (Check the direction of filter insertion and the order of assembly.)

Order of Filter Assembly:  
 Oil Mist Filter →  
 SMD OPTION Filter →  
 HEPA Filter



- 4 Push filter case inwards and assemble filter cover.



## Time of Filter Cleaning and Replacement

Filter	Cycle	Clean/Replacement
Dust Pollution Detection Sensor	Once every 2 months	Cleaning
Oil Mist Filter	Once every 2-4 weeks	Cleaning and washing
SMD OPTION Filter	Once every 6 months	Replacing
HEPA Filter	Once every 12 months	Replacing

※ Based on use at airflow level 1 for 24 hours per day.

## Pollution of Indoor Air More Serious than Outdoor Pollution



The pollution of indoor air was found to be more serious than that of the outdoor. 'Green Seoul 21' published by Green Seoul Citizens' Committee of Seoul Metropolitan City extensively highlighted the issues of indoor pollution, thus pointed out that the status of indoor air pollution was becoming serious as it exceeded the level of outdoor pollution. From March to June 1999, a study was carried out on the quality of air in indoor spaces of Seoul and Busan. The study showed that the concentration of fine dust in tunnels, underground lanes and platforms, etc. was higher than those of other indoor environments. The level of fine dust in these regions was also found to exceed the indoor air quality standard of 150mg/m<sup>3</sup> specified by the Ministry of Environment. In addition, indoor pollution in wintertime was found to exceed that of summertime by 25 times at the highest.

According to a research carried out on the level of volatile organic compounds (VOCs) in both indoor and outdoor spaces of 10 residential houses and 4 offices located in Seoul, the concentration of toluene and ethylene, etc. was found to be higher in the indoor spaces than in the outdoor spaces by as much as 2.4 times. In case of newly constructed buildings, the pollution level was found to be up to 4 times higher than that of other buildings. Cigarette smoke is also being pointed out as a factor to cause indoor pollution. In addition to carbon monoxide generated as a result of the incomplete combustion of cigarette, cigarette smoke contains approximately 200 types of toxic substances including fine dust particles, etc. and approximately 4000 types of chemicals. Thus, the research warns people of the ill effect of cigarette smoke to be exerted even on non-smokers in the indoor space. With the increase in high-rising apartment buildings, closed-type residential spaces and using of compound chemical substances in furniture and architectural construction, the problem of indoor pollution is becoming more serious than that of the outdoor space. In order to minimize indoor pollution, special caution is required to maintain pleasant indoor environment, such as to frequently ventilate and clean the indoor space as well as to refrain from smoking in the closed space, etc.

### Air and Health

Yellow dust refers to the phenomenon of dust and soil from the yellow earth region in the valley of the Yellow River and desert region of China and Mongolia floating in the wind and falling down to the ground to cause visibility impairment mainly during springtime, the dry season.

When yellow dust phenomenon occurs, it causes clouding of visibility and change of sky into yellowish brown color, thus results in deterioration of visibility and building up of fine yellow dust particles on human body and objects. Yellow dust, when generated in desert region, mainly consists of quartz (silicon) and, when generated in yellow earth region, largely made up of aluminum contents. However, in the recent times, the wind containing yellow dust passes through the upper air of industrial zone in China, thus delivers pollutants of heavy metals or sulfurous acid gas. As such, yellow dust is causing serious environmental pollution in the recent days.

#### Damages of Yellow Dust

Yellow dust phenomenon blocks out and diffuses sunlight to impair visibility. Thus, it blocks the pores of agricultural crops or broad-leaved trees, causing impediment in their growth.

Therefore, frequent occurrence of yellow dust phenomenon can lead to serious damage to agricultural crops or forest, etc.

In addition, it may cause problems in precision machinery, such as semiconductors and aircrafts, etc, thus result in significant damages to them. The ill effects of yellow dust on human body include bronchitis and asthma, etc. by penetrating deep into the respiratory organ and conjunctivitis and xerophthalmia, etc. by getting in contact with eyes. However, as yellow dust contains a large quantity of alkaline contents, it neutralizes acidic pollutants even after it falls down to the ground. Therefore, it also has the positive effect to assist in prevention of acidifying rainwater on the inland area.








## Before Requesting for After Sale Service



### Please check the followings before requesting for after sale service.

Even if product is not out of order, air purifier may not operate properly due to insignificant causes or user's unfamiliarity with handling the product. In such cases, check for the following symptoms and corrective measures to solve simple troubles without the help of our service center. If the problem is not solved after checking the followings, please contact our service center.

Symptom	Please Check	Measures to Take
Wind is not coming out. 	<ul style="list-style-type: none"> <li>Is power cord plugged?</li> <li>Is display panel turned off?</li> <li>Check for the status of power failure?</li> <li>Is filter cover closed?</li> <li>Is the position of swing grill correct?</li> </ul>	Plug power cord into 120V~ power outlet. Turn power switch on and select switch for desired function. Operate product after power is back on. Properly close filter cover. Turn off power and turn it on again before use.
Airflow does not change. 	<ul style="list-style-type: none"> <li>Is mode indication lamp turned on?</li> <li>Is the room dark?</li> </ul>	Airflow selection cannot be made unless in manual operation mode. (Status normal) Airflow selection cannot be made during sleep mode operation. (Status normal)
Strength of wind has significantly weakened. 	<ul style="list-style-type: none"> <li>Has the time for filter cleaning or replacement passed?</li> </ul>	Replace or clean filter.
Pollution level does not change. 	<ul style="list-style-type: none"> <li>Is there dust built up in the lens of dust pollution detection sensor?</li> <li>Is the pollution level continuously displayed high?</li> <li>Is the pollution level continuously displayed low?</li> </ul>	Remove dust. (Refer to page 25.) Adjust sensitivity of dust pollution detection sensor to low. (Refer to page 24.) Adjust sensitivity of dust pollution detection sensor to high. (Refer to page 24.)
Other performance-related defects 	<ul style="list-style-type: none"> <li>After checking symptoms, unplug power cord and make inquiries or request for after sale service.</li> </ul>	

# Warranty & Product Specifications



Fill out the  
guarantee and  
keep it with  
users' manual.

To be filled by customer		
Product name	Coway Air Purifier	Guarantee Period
Model name	AP-2505CH	1 years
Series No.		
Date of purchase		
Period of warranty		Until
Address of customer		
Name of customer	TEL.	MOBILE.
Product specifications		
Rated voltage	120V~ 60Hz	
Power consumption	170W	
Dust collection method	HEPA filter method	
Room Area	Room Area Served 668 sq.ft	
CADR(Clean Air Delivery Rate)	DUST CADR 422	
	Tobacco Smoke CADR 431	
	Pollen CADR 499	
Product size	24.4(W) X 16.1(D) X 35(H)inch	
Weight	50.7 lb	

※ Aight variation in specifications may apply for improvement of product performance.

**Coway**

## Product Guarantee


- Parts and components shall be replaced free of charge within the guarantee period if the defects occur due to manufacturing defects in normal operation.
- Contact us in case of breakdown.
- In the following cases, repair work shall be charged even within the guarantee period.
  - ▶ Breakdown caused by careless operation or unreasonable repair and renovation.
  - ▶ Breakdown caused by nonperformance of the instructions specified in the manual.
- Even after the expiration of guarantee period, it is possible to apply for charged repair.
- Present this Letter of Guarantee whenever repair is needed.
- This letter of guarantee is valid in the country where the product is purchased, and for one year from the date of purchase.
- Keep this Guarantee carefully as it is not re-issued.

If you did not receive proper after sale service, please contact our customer service center.

● Nationwide A/S Call : 1-800-888-112

● Customer counselling Center Call : 1-800-888-112 Fax :

※ This number is only used in Malaysia territory.

 We are not responsible for any problems caused due to using of filters and parts not authorized by Coway.

Coway Co., Ltd  
658, Yugu-Ri, Yugu-Eub, Gongju-Si, Choongchungnam-Do, Korea  
Tel : 82-41-850-7879 Fax : 82-41-841-7816  
www.coway.com

## Free Manuals Download Website

<http://myh66.com>

<http://usermanuals.us>

<http://www.somanuals.com>

<http://www.4manuals.cc>

<http://www.manual-lib.com>

<http://www.404manual.com>

<http://www.luxmanual.com>

<http://aubethermostatmanual.com>

Golf course search by state

<http://golfingnear.com>

Email search by domain

<http://emailbydomain.com>

Auto manuals search

<http://auto.somanuals.com>

TV manuals search

<http://tv.somanuals.com>