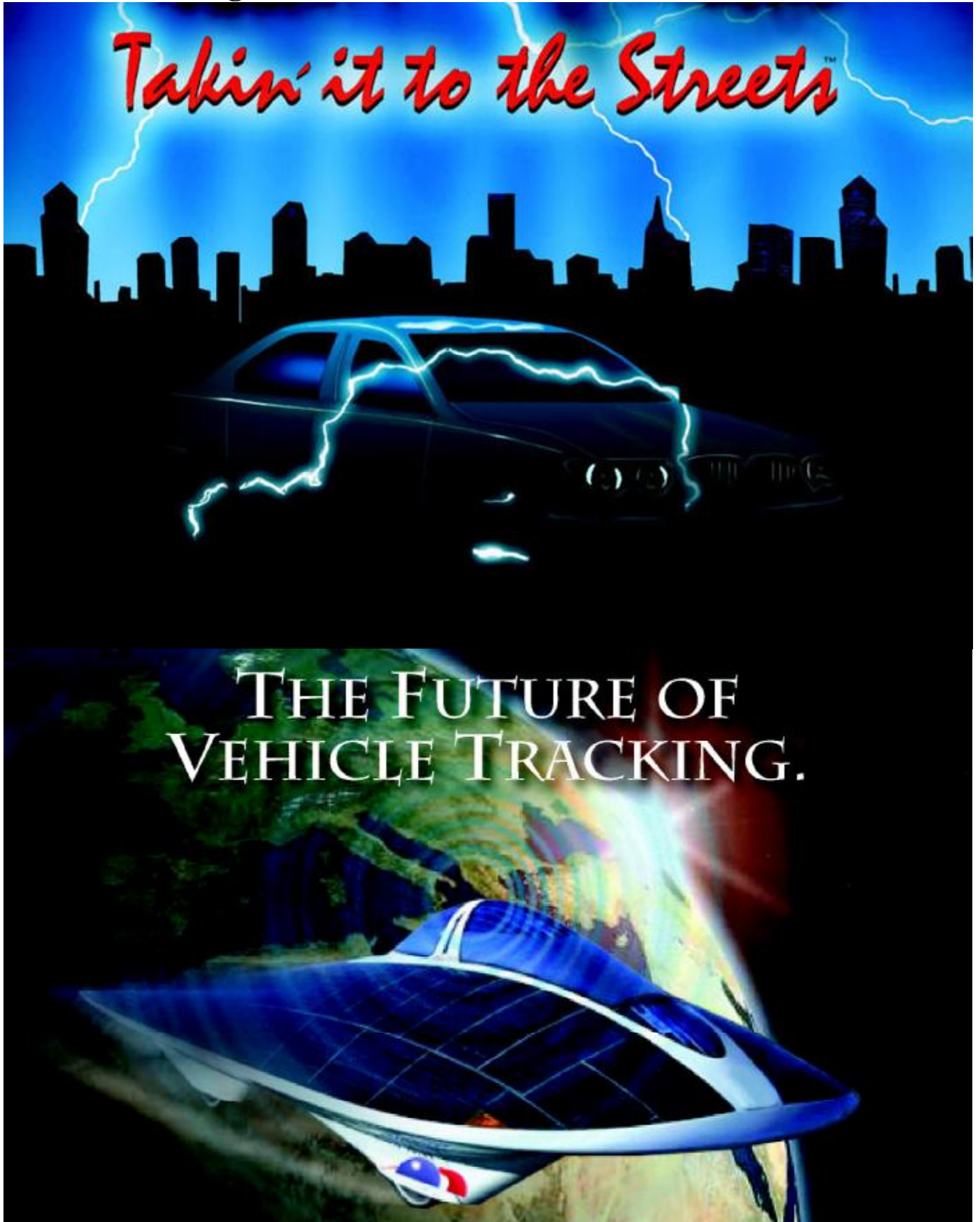


# CRIME STOPPER

TN-4011 Getting Started Manual



# Table of Contents

<b>Login Page</b> .....	<b>3</b>
<b>Getting Started</b> .....	<b>4</b>
<b>Locate Vehicles on Map</b> .....	<b>5</b>
Adding a Bread Crumb Trail .....	7
Sorting by Vehicles .....	9
Sorting by Drivers.....	9
Find a Vehicle / Driver .....	9
<b>Map Control Tool Box</b> .....	<b>10</b>
Navigating the MAP Control Panel.....	10
Virtual Earth Controls.....	10
VIRTUAL EARTH Street View .....	10
VIRTUAL EARTH Aerial View .....	11
VIRTUAL EARTH Hybrid View .....	12
VIRTUAL EARTH Birds Eye View.....	12
GOOGLE Earth Controls .....	13
GOOGLE Earth Street .....	13
GOOGLE Earth Aerial.....	13

## Login Page



<http://gps.crimestoppertraknet.com/>

*Your Username*

*Your Password*

*Remember me on this computer.*

**Enter your username and password. Username and Password is given once the contract has been signed and faxed back to Traknet™, a Division of Crimestopper Security Products, Inc. Fax:805.581.9500**

**You can select “remember me on this computer” only if it is a secured computer. Do not use this check box on any public computer.**

## Getting Started

Before you click away, get familiar with the ICONS.



**Map Control Tool Box:** Zoom In and Out, Birds Eye View, GOOGLE and Virtual Earth Views. See Traffic and or Weather information. Use this function after selecting a vehicle or vehicles.



**Locate Vehicles on Map:** This is the option to select any or all your vehicles. Click on bread crumb trail to see the last 30 minutes of history for your vehicle or vehicles. Click on route lines to see the direction of your vehicle or vehicles.



**Manage Landmarks/Address:** You can add a new Landmark, edit an existing Landmark or delete a Landmark with this button. You can also find the closest vehicle to this Landmark, provided you have selected a vehicle or vehicles.



**Fleet Status Report:** Check you entire fleet as to last location, mileage driven, current speed and Ignition Off duration.



**Generate Reports:** Over 20 reports to choose from. Can select one vehicle or multiple vehicle's depending on what report is generated.



**Search for Business:** Select this report to find a business, restaurant, fuel depot or any listed business. Search by business name or nearby city / state.



**View Vehicles History:** You can view a vehicle or all vehicles history, up to 60 days.



## Locate Vehicles on Map

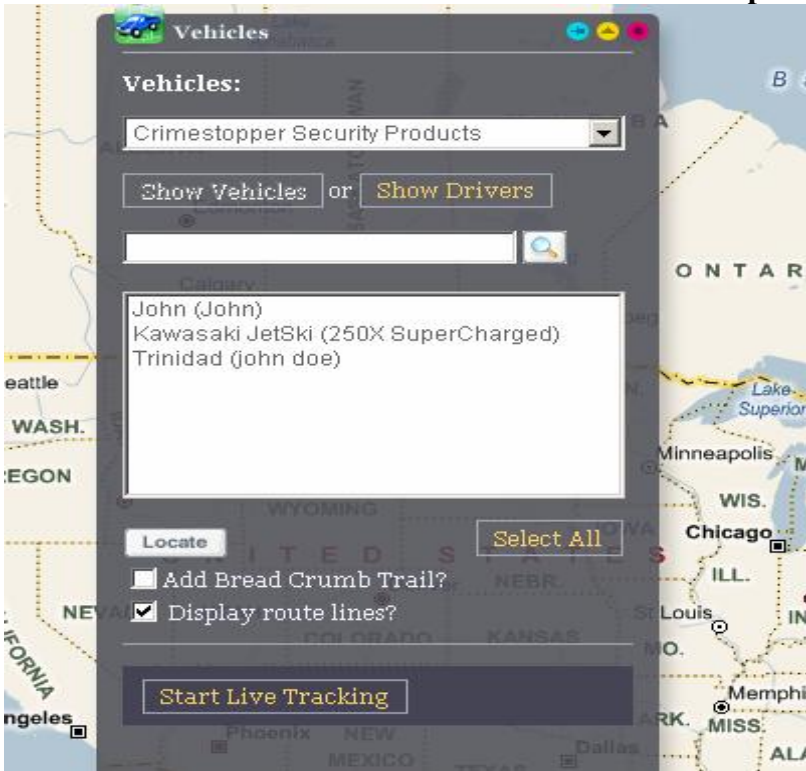
After logging in, the USA map will appear.



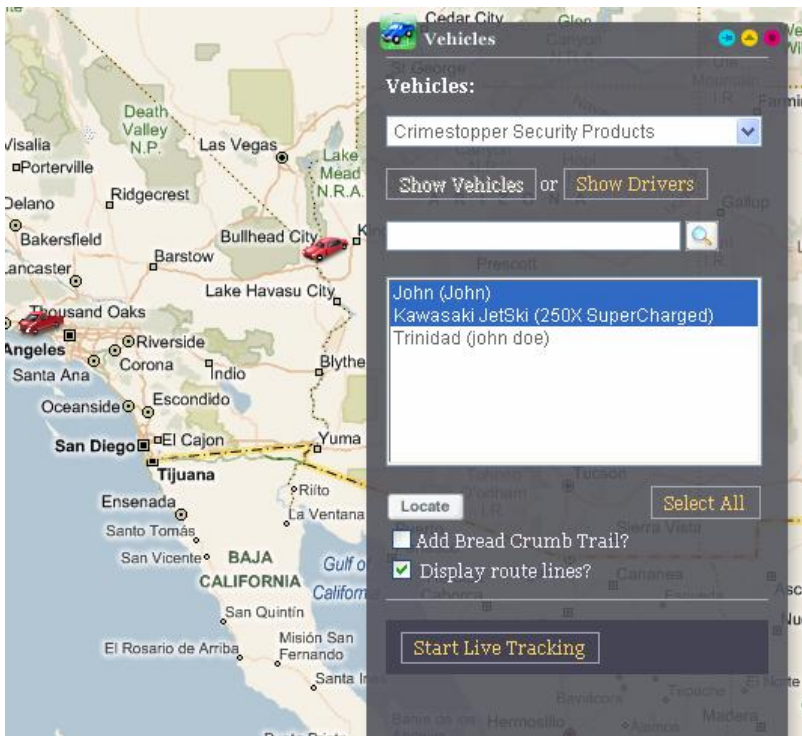
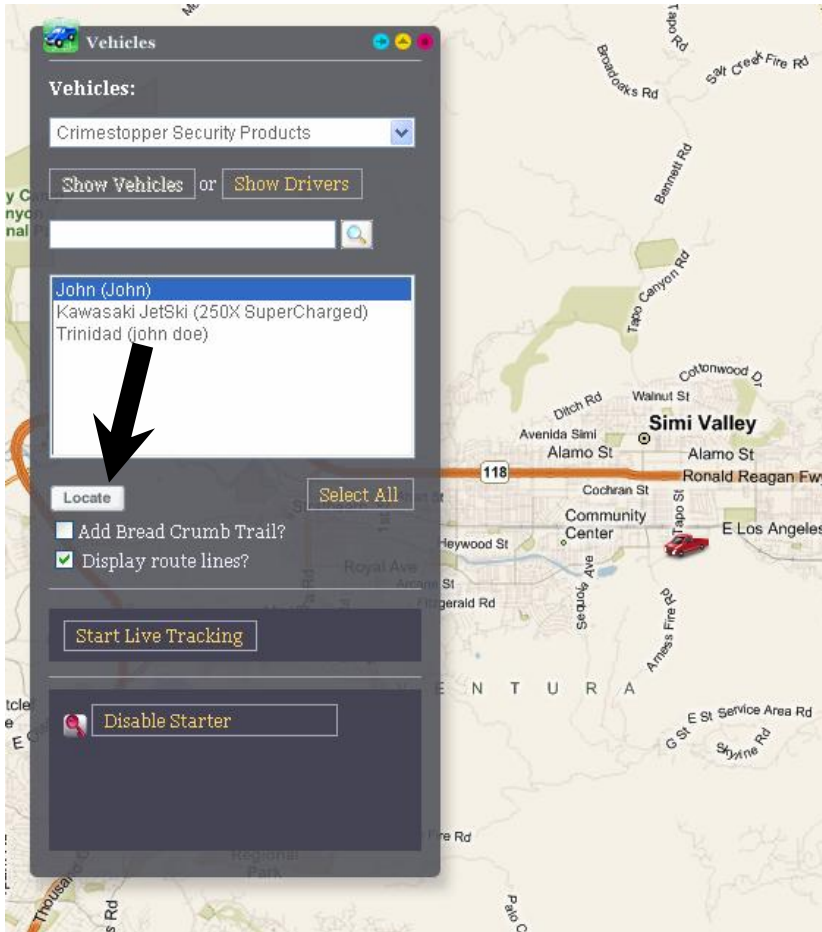
Click on this Icon to display your vehicle or vehicles.



Select a vehicle or vehicles to show locations on the map.

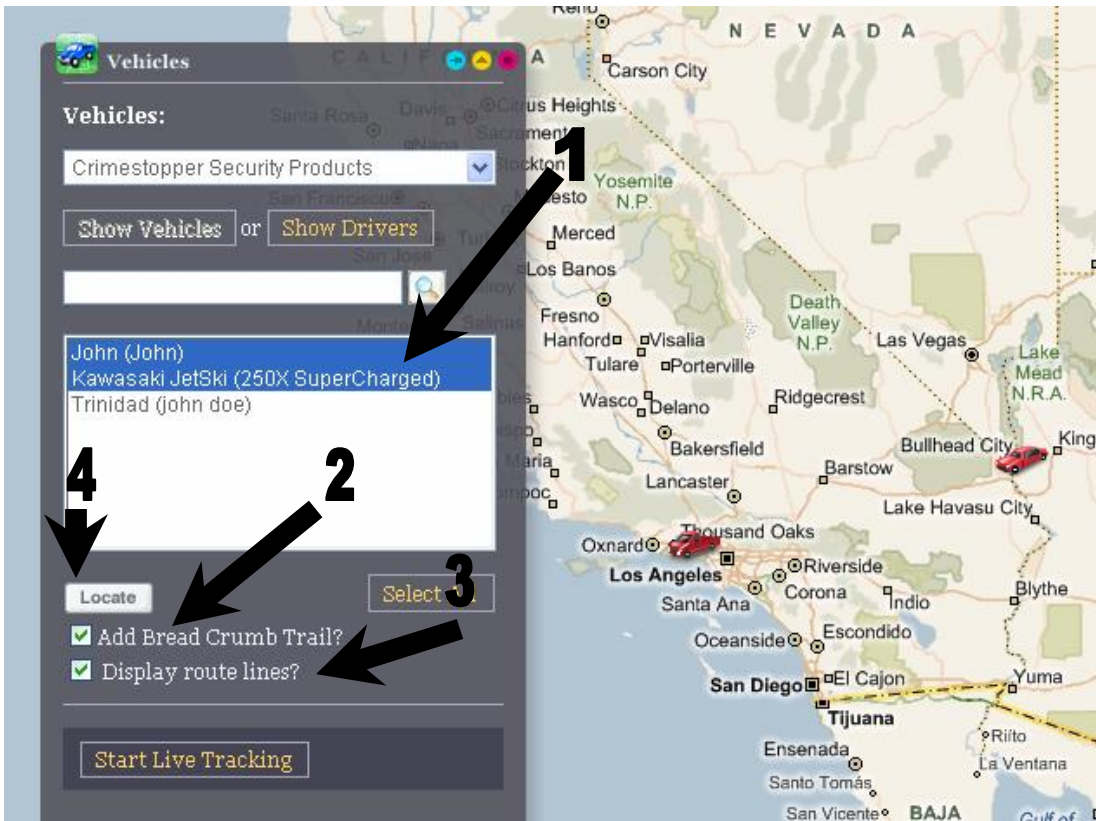


When you click the locate tab, your vehicle or vehicles will appear on the map.

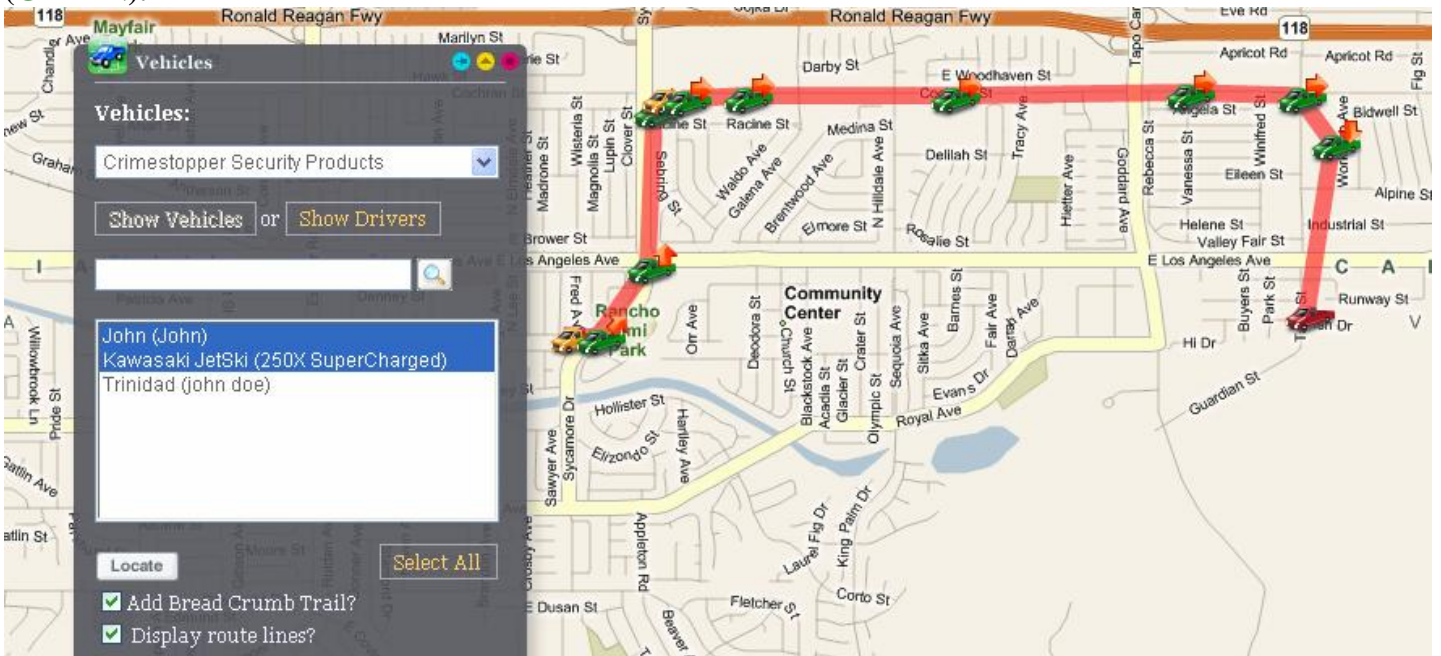


## Adding a Bread Crumb Trail

1. Select your vehicle or vehicles. 2. Check mark "Add Bread Crumb Trail". 3. Check mark Display route lines. 4. Click locate.



This will show you the last 30 minutes your vehicle or vehicles have traveled along with speed, heading, time and address. Ignition status is displayed with time off (RED), time idle (YELLOW) or time running (GREEN).



To view statistics, click on any of the vehicles. The selected vehicle will show you the Drivers Name, User Time, Fleet Time, Current Speed, Odometer, Lat Long, Heading and Street Address.

**John (9) - M (00:01:58)**

**John**

**Driver:** John  
**User Time:** 8/22/2008 1:08:52 PM (GMT-7)  
**Fleet Time:** 8/22/2008 1:08:52 PM (GMT-7 DST)  
**Speed:** 44.7653007507324  
**Odometer:** 39033  
**Position:** 34.2789 -118.7275  
**Heading:** E(90deg)

**Address:** 3548 Cochran St  
**City:** Simi Valley  
**State (ZIP):** CA (93063)

**Zoom to:**  
 street | city | region

**Save as:**  
 New Waypoint  
 New Landmark/Geofence

**John (3) - M (00:01:00)**

**John**

**Driver:** John  
**User Time:** 8/22/2008 1:02:02 PM (GMT-7)  
**Fleet Time:** 8/22/2008 1:02:02 PM (GMT-7 DST)  
**Speed:** 13.5791902542114  
**Odometer:** 39031  
**Position:** 34.2715 -118.7437  
**Heading:** N(2deg)

**Address:** 1988 Sycamore Dr  
**City:** Simi Valley  
**State (ZIP):** CA (93065)

**Zoom to:**  
 street | city | region

**Save as:**  
 New Waypoint  
 New Landmark/Geofence



## Sorting by Vehicles

Select this box to sort by vehicles.



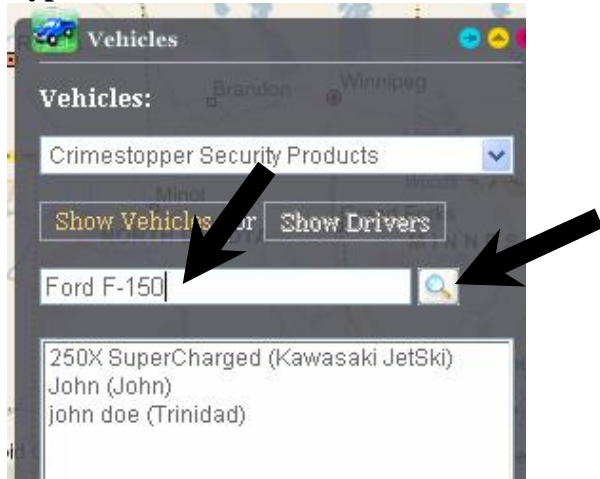
## Sorting by Drivers

Select this box to sort by drivers.



## Find a Vehicle / Driver

Type a vehicle name or driver then click on the search button.



## Map Control Tool Box

This function will allow you to view the map in GOOGLE Earth or Virtual Earth Views. You can select Street Level, Aerial, Hybrid or Birds Eye view using Virtual Earth, or use GOOGLE Earth to select Street Level or Aerial views only. Both GOOGLE Earth and Virtual Earth will allow you to select Traffic and Weather conditions where provided.

If you have a scroll wheel on your mouse, you can zoom in or out with ease. Roll the scroll wheel up to Zoom in or roll it back to zoom out. Left click and hold the mouse will allow you to move the map in any direction with your mouse. You can Cruise around your neighborhood, venture into another state or go to another country.

If you do not have a scroll wheel, you can use the control pad to zoom in or out, go left, right, up or down.

## Navigating the MAP Control Panel

Click the MAP Control Panel. 

### Virtual Earth Controls

#### *VIRTUAL EARTH Street View*

Virtual Earth Street Level view is shown as default. You will see your vehicle on the map.



## ***VIRTUAL EARTH Aerial View***

**Click Aerial. This will display an Aerial view .7 miles above the Earth.**



**Use Zoom In, Zoom Out or your mouse wheel to go in closer or farther out.**



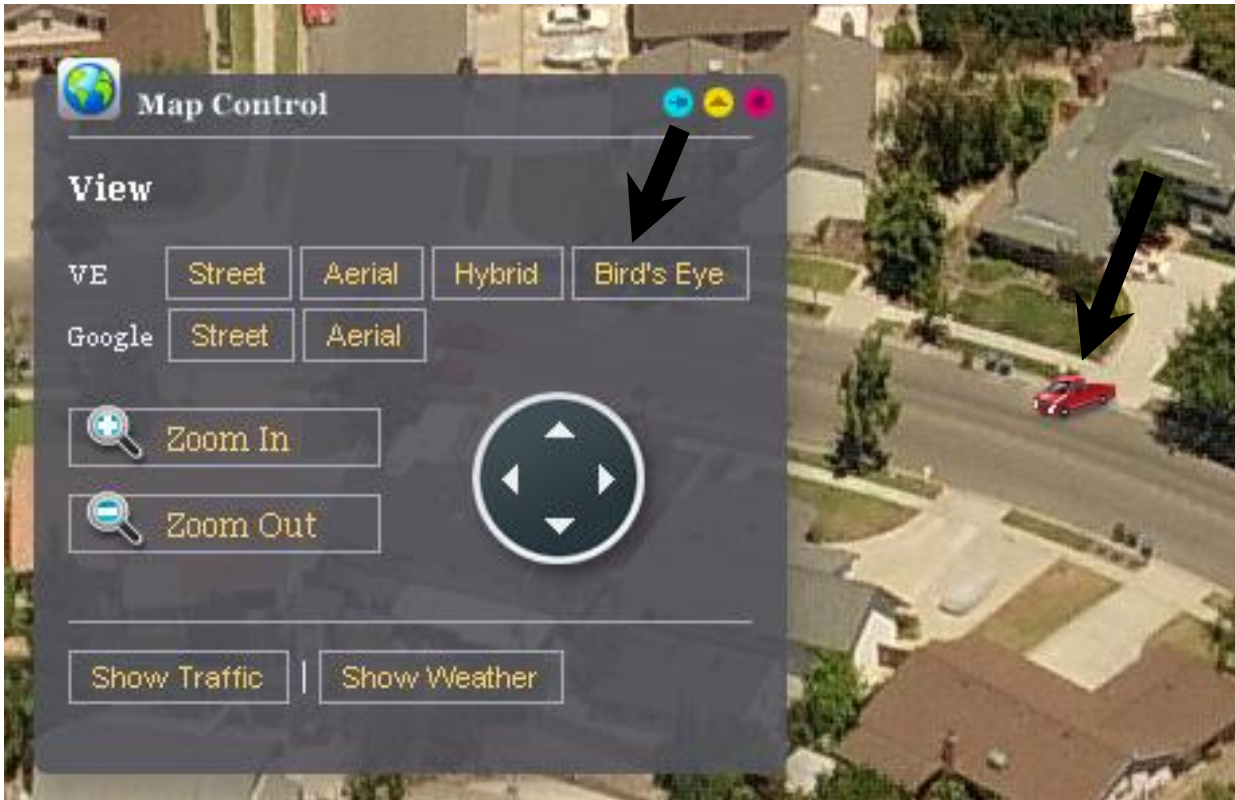
## *VIRTUAL EARTH Hybrid View*

Click Hybrid. This will show an Aerial view along with Street Names.



## *VIRTUAL EARTH Birds Eye View*

Click Bird's Eye view and see as close as 25 yards (some views are restricted such as Military Base's, Airports or Sensitive areas).



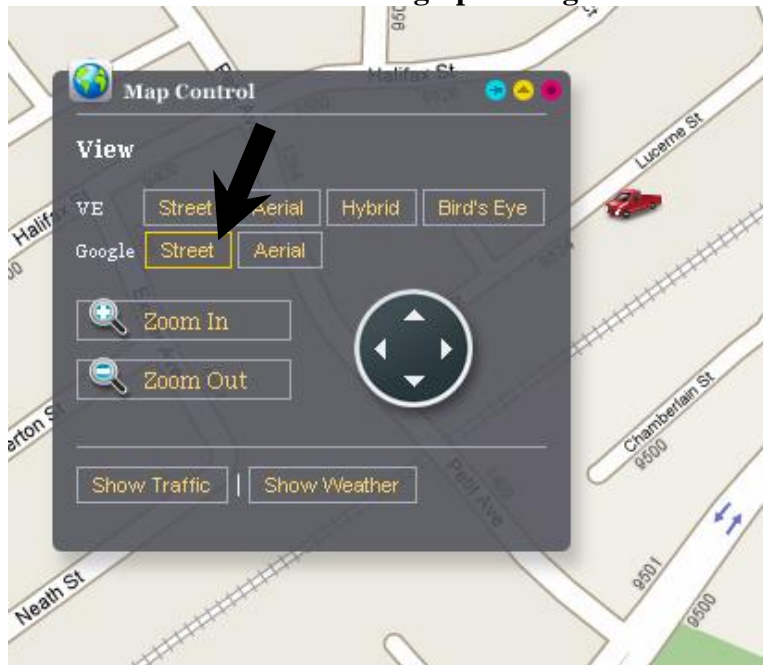
## GOOGLE Earth Controls



Click Map Control Panel.

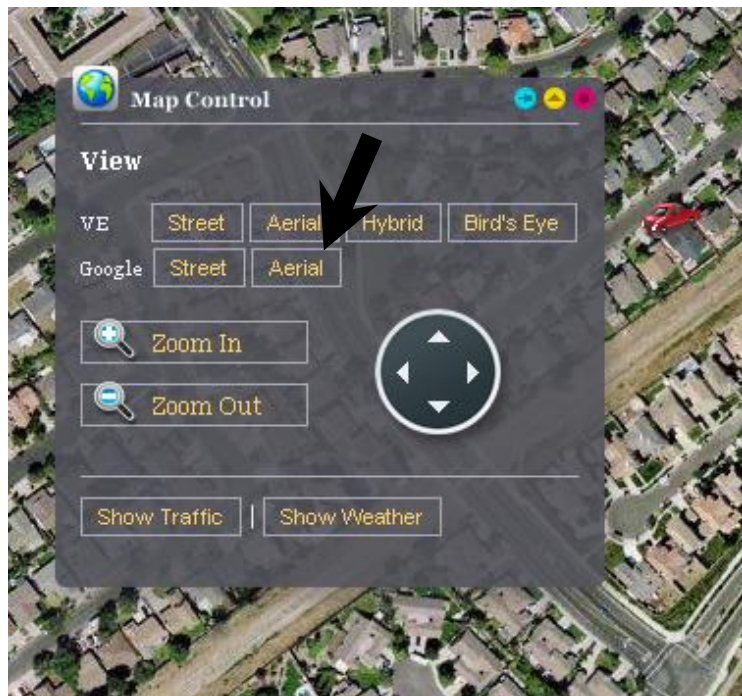
## GOOGLE Earth Street

Click on Street. This will bring up a Google Street View of your vehicle



## GOOGLE Earth Aerial

Click on Aerial. This will bring up a Google Aerial View of your vehicle



**Tech Support:** [support@crimestoppertraknet.com](mailto:support@crimestoppertraknet.com)

**Toll Free:** 800.998.6880

**Fax:** 805.581.9500

## Free Manuals Download Website

<http://myh66.com>

<http://usermanuals.us>

<http://www.somanuals.com>

<http://www.4manuals.cc>

<http://www.manual-lib.com>

<http://www.404manual.com>

<http://www.luxmanual.com>

<http://aubethermostatmanual.com>

Golf course search by state

<http://golfingnear.com>

Email search by domain

<http://emailbydomain.com>

Auto manuals search

<http://auto.somanuals.com>

TV manuals search

<http://tv.somanuals.com>