



OPERATING INSTRUCTIONS RS900ER/RS901 *SERIES II*

INTRODUCTION

CONGRATULATIONS on your choice of a *CoolStart™ Remote Engine Starter by Crimestopper Security Products Inc.* This system is the most advanced and reliable Remote Start system available on the market today.

This booklet contains the information necessary for using & maintaining your remote start system. If any questions arise, contact your installation dealer or Crimestopper Security Products Inc. at (800) 998-6880.

IMPORTANT INFORMATION-MODEL RS901

When RS901 remote starter is activated by an ALARM SYSTEM REMOTE CHANNEL OUTPUT, or a FACTORY KEYLESS ENTRY SYSTEM the following features may not be available depending on the type of input used to trigger the Remote Start:

- **INFINITY RUN MODE**

This device complies with FCC Rules part 15. Operation is subject to the following two conditions: 1) This device may not cause interference, and (2) this device must accept any interference that may be received, including interference that may cause undesired operation. The manufacturer is not responsible for any radio or TV interference caused by unauthorized modification to this equipment. Such modification could void the user's authority to operate the equipment.

OPERATION CAUTIONS AND WARNINGS

CRIMESTOPPER SECURITY PRODUCTS, INC. and its **VENDOR** shall not be liable for any accident resulting from the use of this equipment. This system is designed to be professionally installed into a car or vehicle in which all items, such as parking brake and all associated components, door switches, transmission shift linkage, throttle linkage, and all engine safety features, are in perfect working condition.

IT IS ABSOLUTELY THE OWNER'S SOLE RESPONSIBILITY TO:

a) Understand the operation of this system and its safety features. b) Check for proper operation of these safety features prior to accepting delivery of the vehicle from the installation facility. c) Check and maintain the condition of the vehicle and all items relative to the proper operation of this system and its safety features. d) Always leave the doors and windows closed and locked to protect against accident and theft.

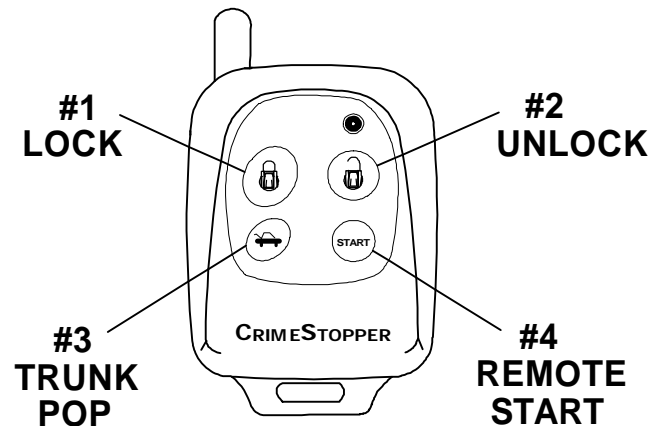
DO NOT remote start the vehicle in a closed garage. Make sure that the garage door is open or there is adequate ventilation. Failure to observe this rule could result in **injury or death** from poisonous Carbon Monoxide fumes.

DO NOT install the Remote Engine Starting System on MANUAL TRANSMISSION vehicles or vehicles which can not be protected by locking doors and closing windows. Such vehicles are, but not limited to: motorcycles, convertibles, and any open air vehicle. These vehicles can be easily entered and put in gear, thus creating a hazardous condition.

IT IS ABSOLUTELY THE OWNERS SOLE RESPONSIBILITY to make certain the vehicle **PARKING BRAKE** is properly adjusted and will hold the vehicle securely in all parking conditions, and to periodically check and maintain proper adjustment.

OPERATING THE REMOTE TRANSMITTER

The transmitter supplied with this system has Four (4) buttons / channels. The button configuration is Factory-set and unchangeable:



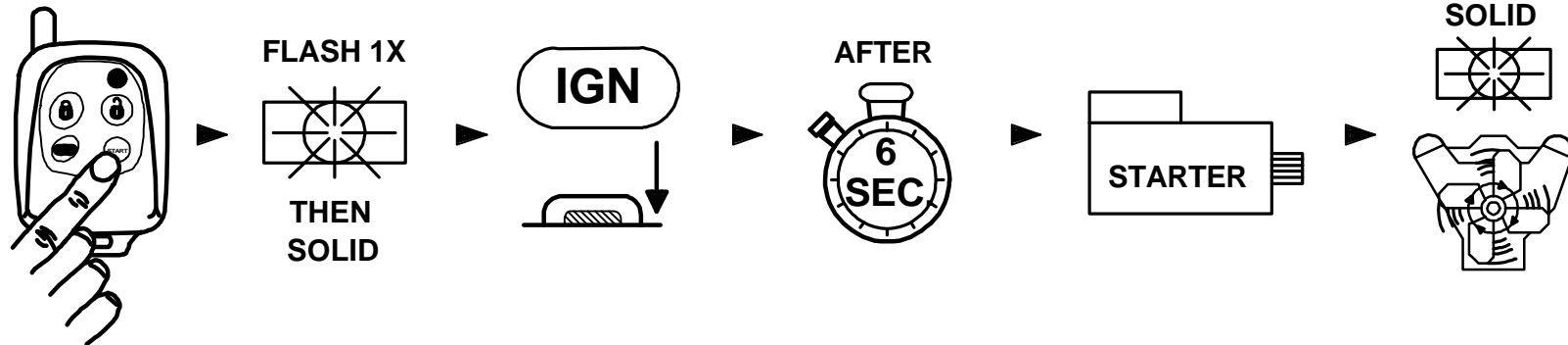
REMOTE ENGINE CONTROL

The system has three remote modes of controlling the engine:

- Remote starting the engine , Turning off a remote started engine, and Idle Down/Infinity Run modes

REMOTE ENGINE STARTING - SUCCESSFUL START:

- 1) Press Remote Start button.
- 2) Parking lights flash once, then turn on solid, Ignition/Acc On.
- 3) After 6 seconds Starter Motor engages, Parking lights and Acc circuits turn off while cranking.
- 4) Engine Starts and Runs. Parking Lights and Acc turn back on, Doors Lock.
- 5) Engine will remain running for programmed run time until reset with Brake pedal or turned off with remote transmitter.



REMOTE ENGINE STARTING - UNSUCCESSFUL START:

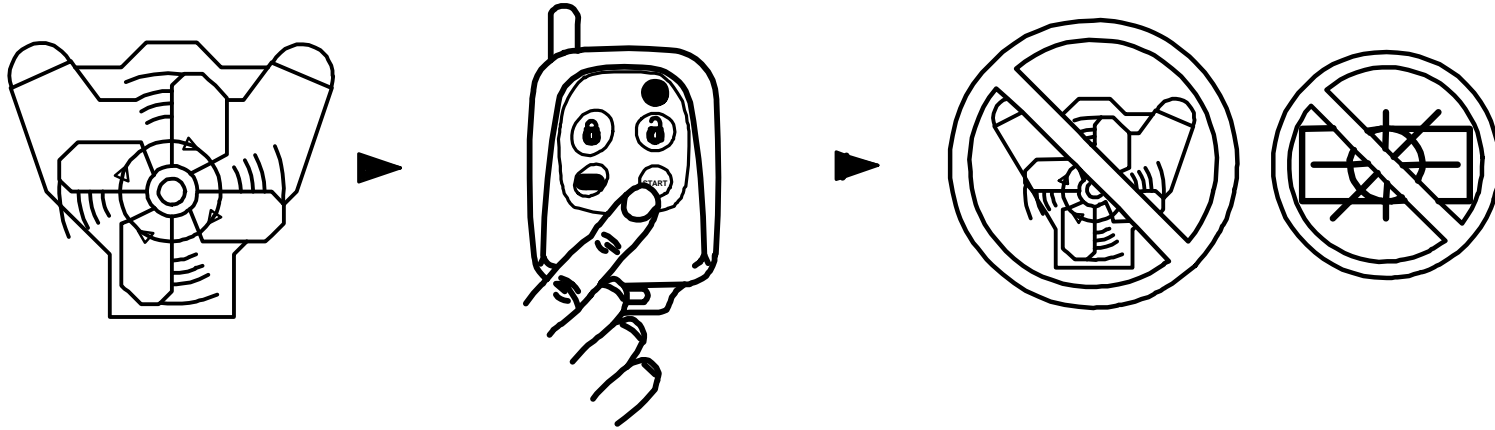
In the event that the engine does not start on the first attempt, the system shuts down for a few seconds, then attempts to restart the engine a 2nd and 3rd time. For hard starting engines, the unit will allow a starter crank time of up to 13 seconds maximum. This should provide ample cranking time for difficult starts, but is limited to 13 seconds to help prevent damage to the starter from over cranking in the case of a malfunctioning unit.

- 1) If engine starts on 2nd or 3rd attempt, see steps 4 & 5 above of "Successful Start".
- 2) If Third attempt fails to start engine, the system will turn off and doors will remain locked. *NO FURTHER ATTEMPTS WILL BE MADE AUTOMATICALLY*

TURNING OFF A REMOTE STARTED ENGINE:

- 1) Engine is running in Remote Start (Parking lights ON).
- 2) Press Remote Start button.
- 3) Engine turns & parking lights OFF, Doors remain locked or will re-lock/re-arm if applicable.

TURNING OFF A REMOTE STARTED ENGINE:



IDLE DOWN MODE

This mode allows the unit to take over operation of the parked vehicle while the ignition key is removed and you exit the vehicle. The vehicle is put into a remote running condition before you exit and it will remain running for the programmed run time or until you come back.

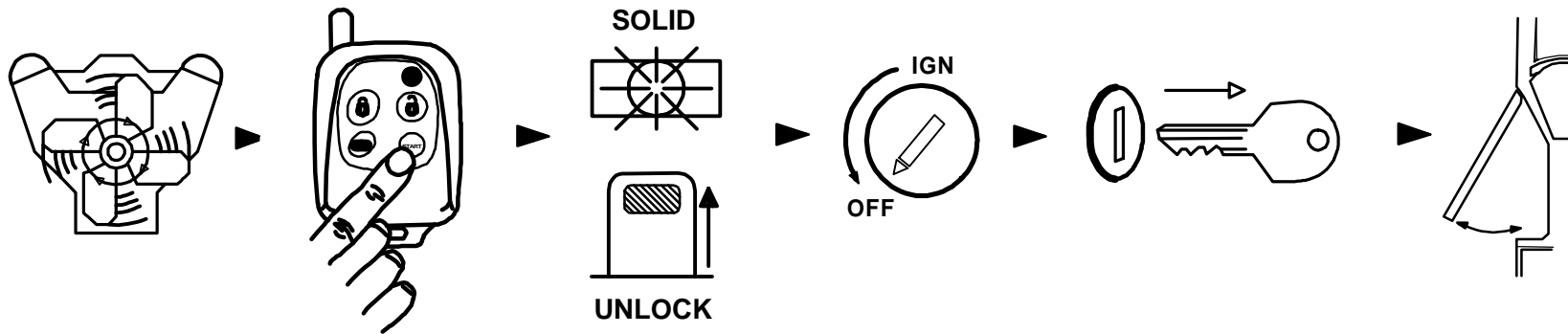
Examples:

- ***You pull up to a convenience store for a quick stop, "Idle Down" mode keeps engine running when you exit the vehicle, (with keys in hand) remote lock doors or arm alarm. When you return, unlock or disarm alarm, turn ignition ON and drive away.***
- ***On some Turbocharged vehicles it is recommended that the driver leave the car at idle for a short time before turning the car off to allow the turbo to cool down.***

IDLE DOWN MODE - EXITING THE VEHICLE:

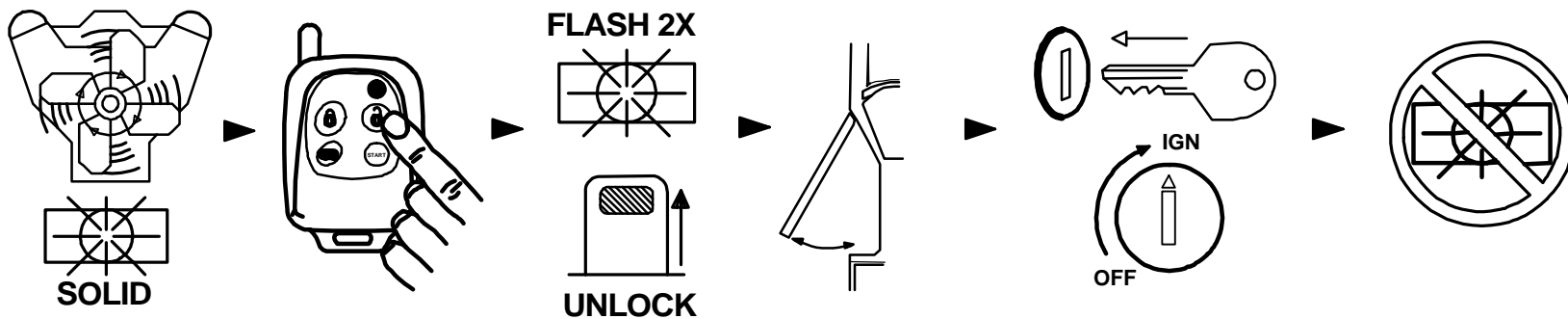
- 1) With engine running, press Remote Start button for at least one second or activate Green remote start input wire with a host alarm's Auxiliary output (RS901)
- 2) Parking Lights will turn ON.
- 3) Doors will unlock, or if brake pedal is being depressed doors will unlock when it is released.
- 4) Turn Ignition switch OFF. Engine will remain running.
- 5) Exit vehicle then remote lock doors if desired.
- 6) Engine will remain running for programmed run time.

IDLE DOWN MODE - EXITING THE VEHICLE:



ENTERING A VEHICLE DURING "IDLE-DOWN" or "INFINITY RUN" MODES:

- 1) With engine running in "IDLE DOWN" (parking lights ON), unlock door or (Remote unlock or disarm alarm if applicable)
- 2) Enter vehicle and be careful not to step on brake pedal! (Remote Start Reset)
- 3) Turn Ignition to ON/RUN position, then depress brake pedal to reset the Remote Starter. Parking lights will turn off. Then drive away.

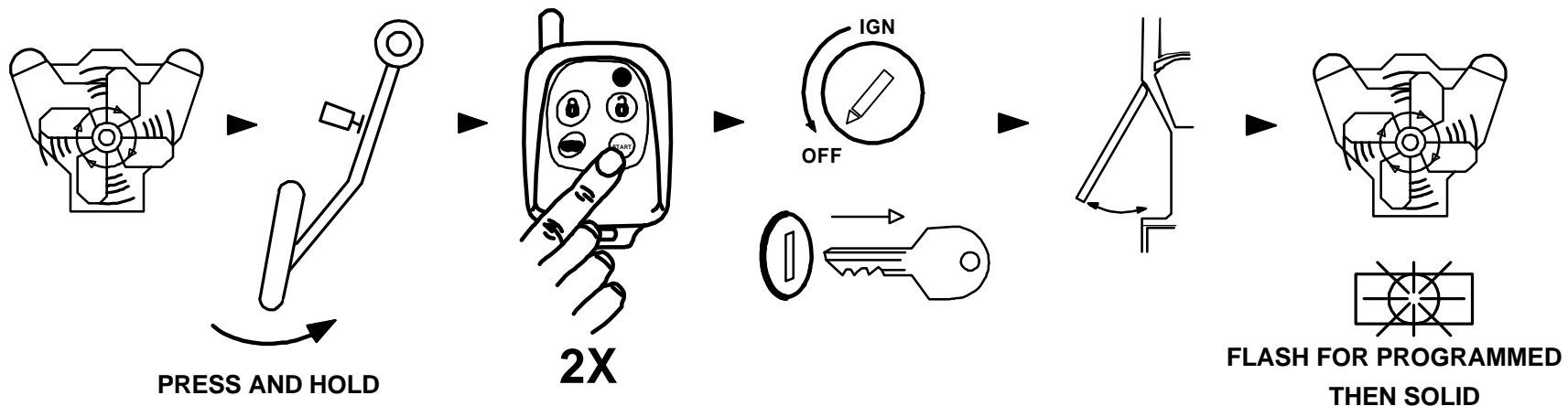


INFINITY RUN MODE

This mode can only be engaged when "Idle Down" is being engaged. It allows the vehicle engine to remain running *INDEFINITELY* after the programmed run time elapses. This mode is especially desirable for protecting police, emergency, or work vehicles that need to be left running unattended. This mode will allow the vehicle to be left running and unattended *without* the ignition key in the switch preventing the vehicle from being stolen.

INFINITY RUN MODE – EXITING THE VEHICLE:

- 1) With engine running, press and hold the brake pedal down, then press the Start button on the transmitter two times within 4 seconds or activate Green input wire 2x's within 4 seconds (RS901).
- 2) Parking Lights will start flashing, and doors will unlock.
- 3) Turn Ignition switch OFF. Engine will remain running. The vehicle's parking lights will flash for the programmed run time of 12, 24, or 36, or 48 minutes and then switch to solid while motor runs indefinitely or until fuel supply runs out.
- 4) Exit vehicle (Arm alarm or remote lock doors if desired).
- 5) Engine will remain running indefinitely or until reset. See *Turning OFF a Remote Started Engine OR Entering a vehicle during "idle down"*



CONVENIENCE AND SAFETY FEATURES

KEYLESS ENTRY (POWER DOOR LOCK CONTROL)

This system enables you to remotely lock and unlock the vehicle's doors (if equipped with power locks) through the transmitter for safety and convenience. This feature may require extra labor and/or parts to install.

REMOTE LOCK / UNLOCK:

- 1) Press the Lock or Unlock transmitter button as you leave or come near the vehicle.
- 2) Parking lights will flash twice for unlock and once for lock. If vehicle is remote started, engine will remain running and lights will flash but return to solid indicating engine is still being controlled by the remote starter.

NOTES: *Doors lock automatically when vehicle is Remote Started. Starter Disable/Anti-grind is enabled/disabled*

only with lock/unlock buttons. If an anti-grind/starter kill relay is installed on a vehicle without power door locks, the lock and unlock buttons on the remote control still have to be utilized to operate the Anti-grind/starter kill.

REMOTE TRUNK RELEASE:

This feature, if installed, will remotely release a factory electronic trunk through the transmitter. This feature may require extra labor and/or parts to install

1) To operate, press (#3) trunk release button for at least one second to remotely open trunk.

VALET MODE/ STARTER KILL OVERRIDE

The keyless entry will still function normally while in valet mode. In the event of a lost or broken transmitter, the Starter Disable/Anti-grind must be overridden in order to start the vehicle with the key.

1) With the key in the ON position, press and hold Program/Valet switch for 6 seconds. LED will turn on solid if installed and the system is now in valet. Perform this procedure again to get out of Valet mode.

HOOD OPEN SAFETY SWITCH

Prevents the engine being Remote Started when hood is open and will abort a remote start if running. Eliminates risk of injury to someone working under the hood of the vehicle. If a Remote Start is requested with the hood open, the lights will flash twice, Ignition will not turn on, and the unit will not attempt a start.

BRAKE PEDAL RESET CIRCUITRY

Prevents starting or shuts off a remote started vehicle when this circuit is active or activated. Prevents unauthorized tampering. This circuit shuts the system down immediately when brake pedal is pressed if key is not in ignition and turned to the run position.

OEM ALARM INTERFACE

This feature is designed to Arm, Re-arm, or Disarm factory equipped security systems in conjunction with remote start and keyless entry (if needed). This feature will maintain the original integrity and security of your vehicle's factory equipped systems before, during, or after an aborted remote start.

ANTI-GRIND / STARTER DISABLE

Prevents User from accidentally grinding the starter if the Ignition key is turned too far to the start position while engine is already running from the remote starter. Starter circuit is automatically disabled when doors are locked using remote as an added security feature.

SERVICING / JUMP STARTING

Be sure to put your CoolStart™ in Valet mode before having your vehicle serviced. If you have an alarm system to control your CoolStart™ (RS901), be sure to have it in valet as well. As an alternative, the Main Alarm / Remote Starter Power Fuse(s) may need to be removed before service. This will help prevent service personnel from

accidentally remote starting the vehicle.

!! WARNING !!: Remove main power fuse before jump starting or charging a dead or low vehicle battery

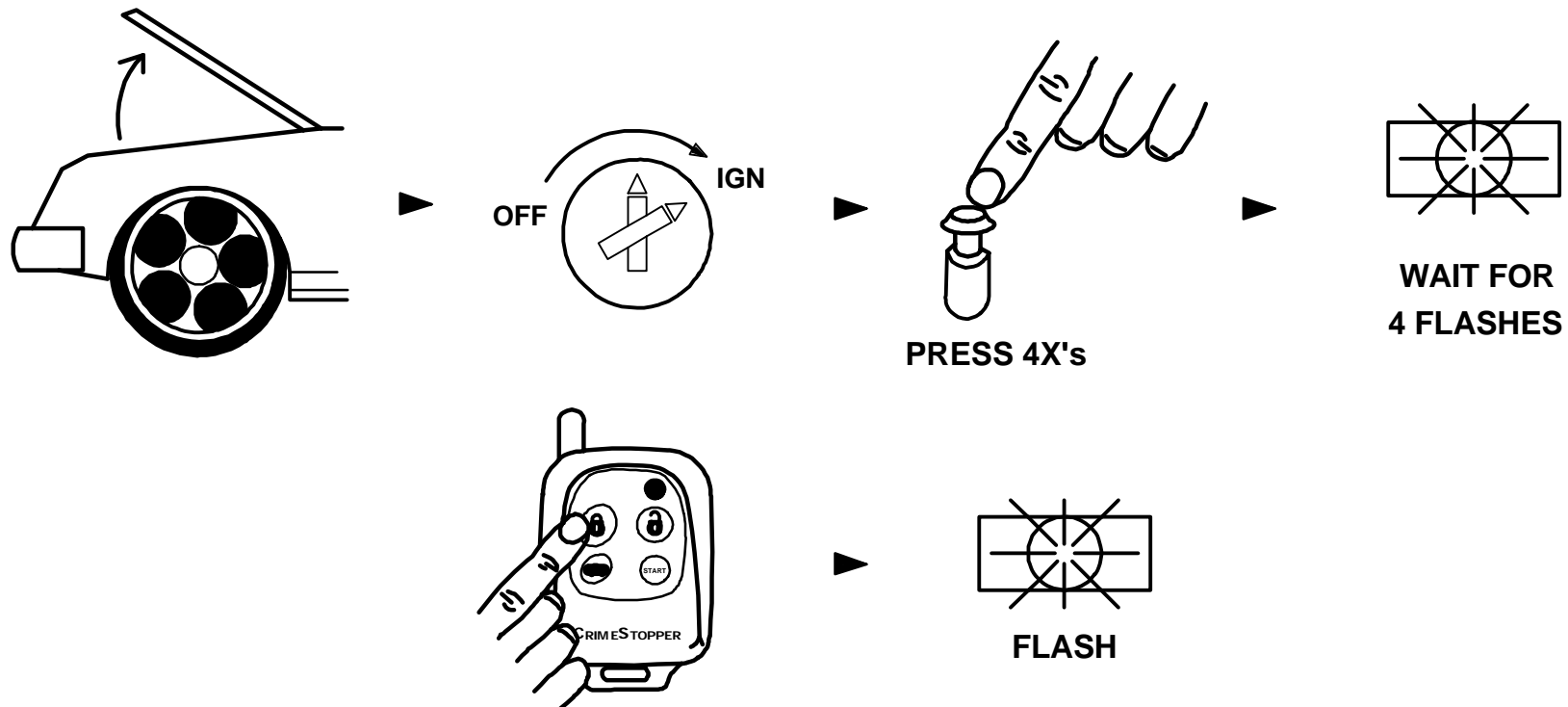
TRANSMITTER PROGRAMMING

TRANSMITTER PROGRAMMING:

Note: All transmitter codes must be learned at time of programming!! The RS900 allows storage of up to 4 different transmitter codes.

1. Open Hood.
2. Turn key to the ON position. (Doors will lock if Autolock is programmed)
3. Press Programming button 4 times, then after a few seconds the unit flash the parking lights 4 times.
4. Press button #1 of the transmitter to be coded. You should get light flashes with each code learned. If all 4 code locations are learned, the unit will automatically exit code learning mode, otherwise turn key off and close hood.

TRANSMITTER PROGRAMMING:



Free Manuals Download Website

<http://myh66.com>

<http://usermanuals.us>

<http://www.somanuals.com>

<http://www.4manuals.cc>

<http://www.manual-lib.com>

<http://www.404manual.com>

<http://www.luxmanual.com>

<http://aubethermostatmanual.com>

Golf course search by state

<http://golfingnear.com>

Email search by domain

<http://emailbydomain.com>

Auto manuals search

<http://auto.somanuals.com>

TV manuals search

<http://tv.somanuals.com>