





De'Longhi Appliances  
via Seitz, 47  
31100 Treviso Italia

5713216831/06.11

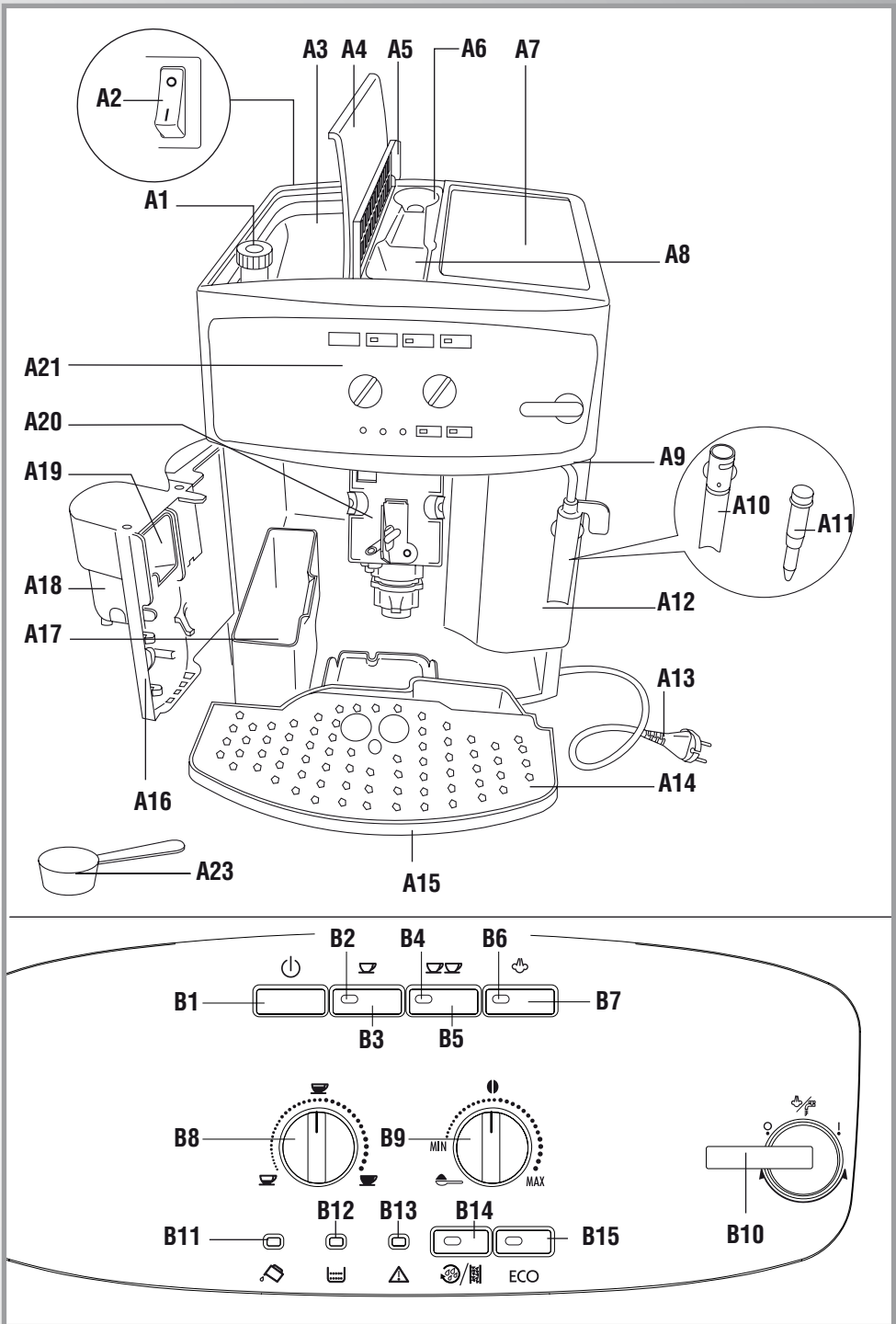
# BEAN TO CUP ESPRESSO AND CAPPUCCINO MACHINE

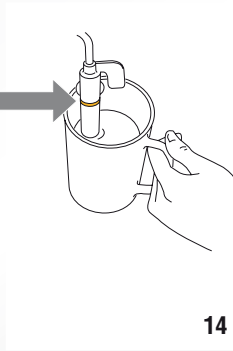
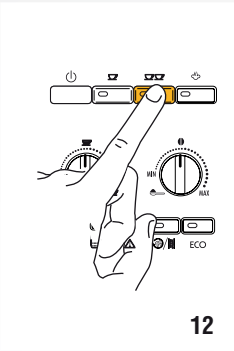
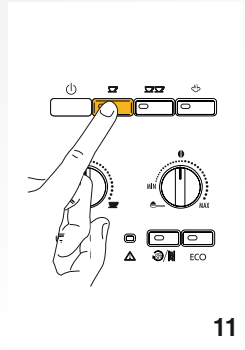
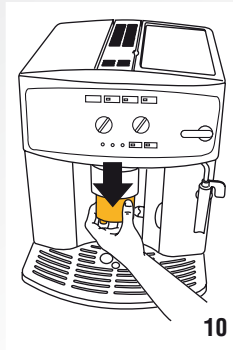
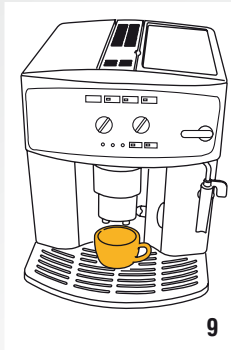
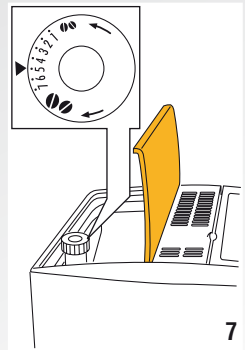
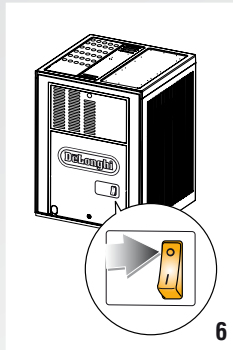
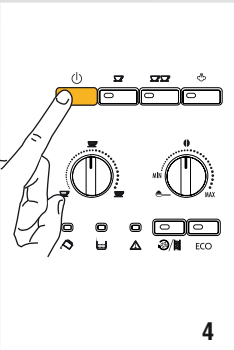
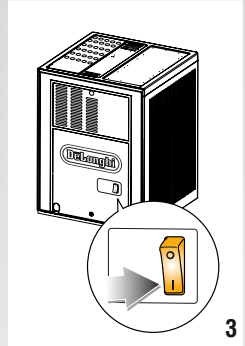
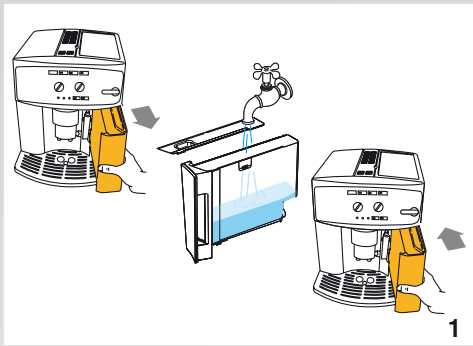
Instructions for use

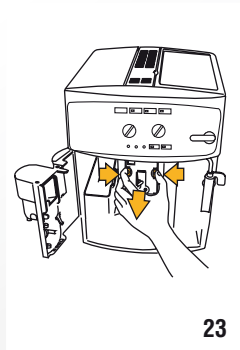
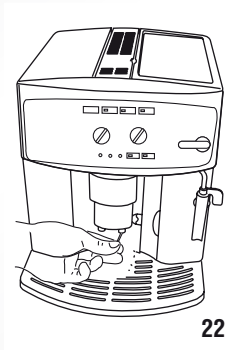
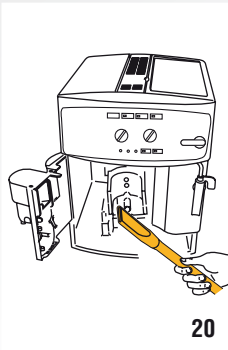
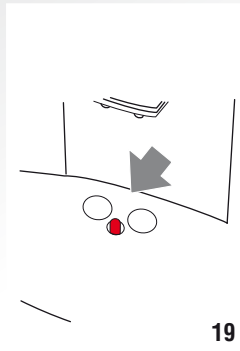
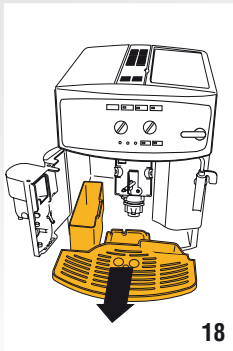
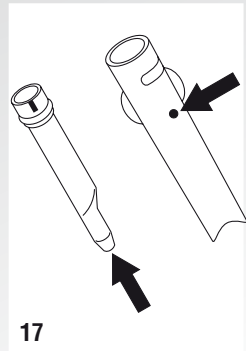
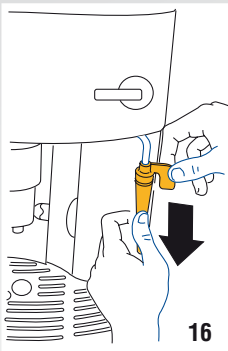


**ESAM 2200/ ESAM2600/ESAM2800**









## CONTENTS

---

<b>INTRODUCTION</b> .....	<b>7</b>
Symbols used in these instructions .....	7
Letters in brackets .....	7
Troubleshooting and repairs .....	7
<b>SAFETY</b> .....	<b>7</b>
Fundamental safety warnings .....	7
<b>DESIGNATED USE</b> .....	<b>8</b>
<b>INSTRUCTIONS</b> .....	<b>8</b>
<b>DESCRIPTION</b> .....	<b>8</b>
Description of the appliance .....	8
Description of control panel .....	8
<b>PRELIMINARY CHECKS</b> .....	<b>9</b>
Checking the appliance .....	9
Installing the appliance .....	9
Connecting the appliance .....	9
Using the appliance for the first time .....	9
<b>TURNING THE APPLIANCE ON</b> .....	<b>9</b>
<b>TURNING THE APPLIANCE OFF</b> .....	<b>10</b>
<b>SETTING AUTO-OFF (STAND BY)</b> .....	<b>10</b>
<b>ENERGY SAVING</b> .....	<b>10</b>
<b>MAKING COFFEE</b> .....	<b>10</b>
Selecting the coffee taste .....	10
Selecting the quantity of coffee in the cup .....	11
Adjusting the coffee mill .....	11
Tips for a hotter coffee: .....	11
Making coffee using coffee beans .....	11
Making coffee using pre-ground coffee .....	11
<b>MAKING CAPPUCCINO</b> .....	<b>12</b>
Cleaning the cappuccino maker after use .....	12
<b>HEATING WATER</b> .....	<b>13</b>
<b>CLEANING</b> .....	<b>13</b>
Cleaning the coffee maker .....	13
Cleaning the coffee grounds container .....	13
Cleaning the drip tray .....	14
Cleaning the inside of the machine .....	14
Cleaning the water tank .....	14
Cleaning the coffee spouts .....	14
Cleaning the pre-ground coffee funnel .....	14
Cleaning the infuser .....	14
<b>DESCALING</b> .....	<b>15</b>
<b>SETTING WATER HARDNESS</b> .....	<b>15</b>
Measuring water hardness .....	15
Set water hardness .....	16
<b>SETTING THE TEMPERATURE</b> .....	<b>16</b>
<b>TECHNICAL SPECIFICATION</b> .....	<b>16</b>
<b>DISPOSAL</b> .....	<b>16</b>
<b>MEANING OF LIGHTS DURING NORMAL OPERATION</b> .....	<b>17</b>
<b>MEANING OF THE ALARM LIGHTS</b> .....	<b>17</b>
<b>TROUBLESHOOTING</b> .....	<b>19</b>
<b>ELECTRICAL REQUIREMENTS</b> .....	<b>20</b>



## INTRODUCTION

Thank you for choosing the ESAM2 Bean to cup coffee maker.

To get the best result of your new coffee machine please read these instructions carefully before use. This should ensure optimum results and maximum safety.

### Symbols used in these instructions

Important warnings are identified by these symbols.

These warnings must absolutely be respected.



Failure to observe the warning could result in possibly life threatening injury from electric shock.



Failure to observe the warning could result in injury or damage to the appliance.



Failure to observe the warning could result in scalds or burns.



This symbol identifies important advice or information for the user.

### Letters in brackets

The letters in brackets refer to the diagrams in the Description of the appliance on page 3.

### Troubleshooting and repairs

In the event of problems, first try and resolve them following the information given in the sections "Meaning of the alarm lights on page 17 and "Troubleshooting" on page 19.

If this does not resolve the problem or you require further information, you should consult Customer Services by calling the number given on the annexed "Customer Service" sheet.

If your country is not among those listed on the sheet, call the number given in the guarantee.

If repairs are required, contact De'Longhi Customer Services only.

The addresses are given in the guarantee certificate provided with the machine.

## SAFETY

### Fundamental safety warnings



This is an electrical appliance and may therefore cause electric shock.

You should therefore follow the following safety warnings:

- Never touch the appliance with damp hands or feet.
- Never touch the plug with damp hands.
- Make sure the socket used is freely accessible at all times, enabling the appliance to be unplugged when necessary.
- Unplug directly from the plug only. Never pull the power cable as you could damage it.
- To disconnect the appliance completely, place the main switch at the back of the appliance in the 0 position (fig. 6).
- If the appliance is faulty, do not attempt to repair. Turn it off, unplug from the mains socket and contact the Customer Services Department.
- If the plug or power cable is damaged, it must be replaced by De'Longhi customer services only to avoid all risk.



Keep all packaging (plastic bags, polystyrene foam) away from children.



The appliance is not intended for use by persons (including children) with reduced physical, sensory or mental capabilities, or lack of experience and knowledge, unless they have been given supervision or instruction concerning use of the appliance by a person responsible for their safety. Children should be supervised to ensure that they do not play with the appliance.



This appliance produces hot water and steam may form while it is in operation. Avoid contact with splashes of water or hot steam.

## DESIGNATED USE

This appliance is designed and made to prepare coffee and heat drinks.

All other use is considered improper.

This appliance is not suitable for commercial use.

The manufacturer is not liable for damage deriving from improper use of the appliance.

This is a household appliance only. It is not intended to be used in:

- staff kitchen areas in shops, offices and other working environments;
- farm houses
- by clients in hotels, motels and other residential type environments
- bed and breakfast type environments.

## INSTRUCTIONS

Read these instructions carefully before using the appliance.

- Failure to respect these instructions may result in burns or damage to the appliance.

The manufacturer is not liable for damage deriving from failure to follow these instructions.



*Please note:*

If the appliance is passed to other persons, they must also be provided with these instructions.

## DESCRIPTION

### Description of the appliance


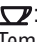




(page 3 - **A**)




- A1. Grinding adjustment knob
- A2. Main switch
- A3. Beans container
- A4. Beans container lid
- A5. Pre-ground coffee funnel lid
- A6. Compartment for measure
- A7. Cup shelf
- A8. Pre-ground coffee funnel
- A9. Steam spout
- A10. Cappuccino maker (removable)
- A11. Steam nozzle (removable)
- A12. Water tank
- A13. Power cable
- A14. Cup tray
- A15. Drip tray
- A16. Infuser door
- A17. Coffee grounds container
- A18. Coffee spout (adjustable height)
- A19. Coffee guide
- A20. Infuser
- A21. Control panel

### Description of control panel

(page 2 - **B**)

*A number of buttons on the panel have a double function. This is indicated in brackets in the description.*

- B1.  button: turns the appliance on and off. (stand by).
- B2. Temperature OK or 1 cup coffee light (If the light flashes, the appliance is preheating; when on steadily, the appliance has reached the ideal temperature to make coffee).
- B3.  button: to make 1 cup of coffee
- B4. Temperature OK or 2 cup coffee light (If the light flashes, the appliance is preheating; when on steadily, the appliance has reached the ideal temperature to make coffee).
- B5.  button: to make 2 cups of coffee
- B6. Temperature OK for steam light
- B7.  button: to select the steam function
- B8. Coffee quantity selection knob (short, standard or long)
- B9. Selection knob to choose the coffee taste (for a mild, standard or strong coffee) or to use pre-ground coffee .
- B10. Steam knob
- B11.  light: no water

- B12.  light: grounds container full  
 B13.  light: general alarm  
 B14.  Rinsing or descaling button with light  
 B15. **ECO** energy saving mode button with light

## PRELIMINARY CHECKS

### Checking the appliance

After removing the packaging, make sure the product is complete and undamaged and that all accessories are present.

Do not use the appliance if it is visibly damaged. Contact Customer Service (see enclosed guarantee leaflet).

### Installing the appliance



When you install the appliance, you should follow the following safety warnings:

- The appliance gives off heat.  
After positioning the appliance on the worktop, leave a space of at least 3 cm between the surfaces of the appliance and the side and rear walls and at least 15 cm above the coffee maker.
- Water penetrating the appliance could cause damage.  
Do not place the appliance near taps or sinks.
- The appliance could be damaged if the water it contains freezes.  
Do not install the appliance in a room where the temperature could drop below freezing point.
- Arrange the power cable in such a way that it cannot be damaged by sharp edges or contact with hot surfaces (e.g. electric hot plates).

### Connecting the appliance




Check that the mains power supply voltage corresponds to the value indicated on the rating plate on the bottom of the appliance.

Connect the appliance to an efficiently earthed and correctly installed socket with a minimum current rating of 10A only.

If the power socket does not match the plug on the appliance, have the socket replaced with a suitable type by a qualified professional.

## Using the coffee maker for the first time



- Coffee has been used to factory test the appliance and it is therefore completely normal for there to be traces of coffee in the mill. The machine is, however, guaranteed to be new.
  - You should customise water hardness as soon as possible following the instructions in the section “Setting water hardness” on page 15.
1. Remove the water tank, fill to the MAX line with fresh water then replace in the appliance (fig. 1).
  2. Turn the cappuccino maker outwards and place a container with a minimum capacity of 100 ml underneath (fig. 2).
  3. Plug the appliance into the mains socket and place the main switch on the back of the appliance in the I position (fig. 3).
  4. Press the  button (fig. 4); IMMEDIATELY AFTERWARDS (WITHIN A MAXIMUM OF 30 SECONDS), turn the steam knob anticlockwise as far as it will go (fig. 5). This is priming the water system. (It is normal for the machine to make some noise).
  5. Wait for delivery of hot water to stop automatically. The lights flash to indicate that you must close the steam tap by turning the steam knob to the 0 position.
  6. Turn the steam knob to the 0 position. The appliance goes off automatically.

To use the appliance, turn it on.



- When using the appliance for the first time, you need to make 4-5 cups of coffee or 4-5 cappuccinos before the appliance starts to give satisfactory results.

## TURNING THE APPLIANCE ON



Before turning the appliance on, make sure the main switch on the back of the appliance is in the I position (fig. 3).

Each time the appliance is turned on, it performs an automatic preheat and rinse cycle which cannot be interrupted.


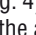


The appliance is ready for use only after comple-


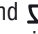
tion of this cycle.

### **Danger of burns!**

During rinsing, a little hot water comes out of the coffee spouts and is collected in the drip tray underneath.

Avoid contact with splashes of water.

- To turn the appliance on, press the  button (fig. 4). The  and  lights flash while the appliance is heating up and performing an automatic rinse cycle. By circulating the hot water, the appliance heats both the boiler and the internal circuits. During this phase, the  light flashes.

When the  and  lights remain on steadily, the appliance is at temperature.


## TURNING THE APPLIANCE OFF

Each time the appliance is turned off, it performs an automatic rinse cycle which cannot be interrupted.

### **Danger of burns!**

During rinsing, a little hot water flows from the coffee spouts.

Avoid contact with splashes of water.

To turn the appliance off, press the  button (fig. 4). The appliance performs a rinse cycle.

### **Please note:**

If the appliance is not used for an extended period, place the main switch in the 0 position (fig. 6).


### **Important!**















To avoid damaging the appliance, never place the main switch (fig. 6) in the 0 position while the appliance is on.

## SETTING AUTO-OFF (STAND BY)

The appliance is set by default to go off if not used for two hours.

The time can be changed so that the appliance switches off after 15 or 30 minutes, or after 1, 2 or 3 hours.

- Press and hold the ECO button until the 5 lights at the back of the control panel come on.
- Select the required period of time (15 or 30 minutes or 1, 2 or 3 hours) by pressing the  button (see the light/time table).

15min	30min	1h	2h	3h
				
				
				ECO

- Press the **ECO** button to confirm the selection and return to normal use of the appliance.

Auto-off is programmed.

### **Please note:**

To disconnect the appliance completely, place the main switch at the back of the appliance in the 0 position (fig. 6).

## ENERGY SAVING

Energy saving mode reduces energy consumption in compliance with current European regulations.

To activate or deactivate this mode, press the **ECO** button. After a period of inactivity, if ECO mode is active the **ECO** button light comes on. This mode is active by default.

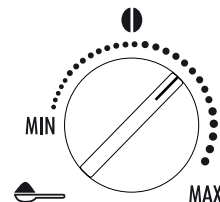
### **Please note:**

A few seconds may elapse between energy saving mode and delivery of the first coffee.

## MAKING COFFEE

### Selecting the coffee taste

Turn the knob to select the required taste. Turning it clockwise increases the quantity of coffee beans the appliance will grind and therefore the strength of the coffee obtained.



The first time you use the appliance, you will need to make a number of coffees to identify the correct knob position through trial and error. Make sure not to turn the knob too far clockwise, otherwise the coffee may be delivered too slowly (a drop at a time), particularly when making two cups of coffee.

## Selecting the quantity of coffee in the cup

Select the required quantity of coffee by turning the knob.



Turning it clockwise increases the amount of coffee obtained.

The first time you use the appliance, you will need to make a number of coffees to identify the correct knob position through trial and error.

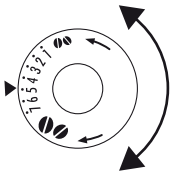
## Adjusting the coffee mill

The coffee mill is set by default to prepare coffee correctly and should not require regulating initially.

However, if after making the first few coffees you find that the coffee is either too weak and not creamy enough or delivery is too slow (a drop at a time), this can be corrected by adjusting the grinding adjustment knob (fig. 7).

### Please note:

The grinding adjustment knob must only be turned when the coffee mill is in operation.




If the coffee is delivered too slowly or not at all, turn one click clockwise towards “7”. For fuller bodied creamier coffee, turn one click anti-clockwise towards “1” (do not turn more than one click at a time otherwise the coffee could be delivered a drop at a time).

These adjustments will only be evident after at least 2 cups of coffee have been made.

If this adjustment does not obtain the desired result, turn the knob another click.

## Tips for a hotter coffee:

For hotter coffee, you should:

- before delivering the coffee, perform a rinse cycle by pressing the  button. Hot water is delivered from the spout, heating the inter-





nal circuits of the appliance and thus raising the coffee temperature.

- warm the cups by rinsing them with hot water (using the hot water function).



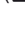
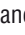
## Making coffee using coffee beans

### Important!

Do not use caramelised or candied coffee beans as they could stick to the coffee mill and make it unusable.

1. Fill the container with coffee beans (fig. 8).
2. Place under the coffee spouts:
  - 1 cup, if you want 1 coffee (fig. 9);
  - 2 cups, if you want 2 coffees.
3. Lower the spouts as near as possible to the cup. This makes a creamier coffee (fig. 10).
4. Press the button corresponding to the number of coffees required (1 cup  or 2 cups  , fig. 11 and 12).
5. Preparation begins and the  and  lights flash.

### Please note:

- While the machine is making coffee, delivery can be interrupted at any moment by pressing one of the two coffee buttons ( or ).
- At the end of delivery, to increase the quantity of coffee in the cup, just press (within 3 seconds) one of the coffee buttons ( or ).

Once the coffee has been made, the appliance is ready to use again.

### Please note:

For hotter coffee, see the section “**Tips for a hotter coffee**”.

### Important!

If the coffee is delivered a drop at a time, too weak and not creamy enough or too cold, read the tips in the “Troubleshooting” section on page 19.

## Making coffee using pre-ground coffee

### Important!

- Never add pre-ground coffee when the machine is off or it could spread through the inside of the machine and dirty it. This could

damage the appliance.

- Never use more than one level measure or it could dirty the inside of the machine or block the funnel.



**i** Please note:

If you use pre-ground coffee, you can only make one cup of coffee at a time.

1. Turn the coffee taste selection knob to the ☞ position.
2. Make sure the funnel is not blocked, then add one level measure of pre-ground coffee (fig. 13).
3. Place a cup under the coffee spouts.
4. Press the ☞ 1 cup coffee button (fig. 11). To deactivate the pre-ground coffee function, turn the knob to one of the other positions.

**i** Please note:

A few seconds may elapse between energy saving mode and delivery of the first coffee.

## MAKING CAPPUCCINO

**ss** Important! Danger of burns

During preparation, steam is given off. Take care to avoid scalds.

1. When preparing cappuccino, make the coffee in a large cup;
2. Fill a container with about 100 grams of milk for each cappuccino to be made. In choosing the size of the container, bear in mind that the milk doubles or triples in volume;

**i** Please note:

For a richer denser froth, use skimmed or partially skimmed milk at refrigerator temperature (about 5°C).

To avoid milk with poor froth or large bubbles, always clean the cappuccino maker as described in the section "Cleaning the cappuccino maker".

3. Press the ☞ button. The corresponding light flashes, indicating that the appliance is heating up;
5. Turn the cappuccino maker outwards and immerse in the milk container (fig. 13);

6. Turn the steam knob to the I position. Steam is delivered from the cappuccino maker, giving the milk a creamy frothy appearance and making it more voluminous;
7. For a creamier froth, rotate the container with slow movements in an upward direction. (You should not discharge steam for more than 3 minutes at a time);
8. When you have obtained the required froth, stop steam delivery by turning the steam knob back to the 0 position.

**ss** Important! Danger of burns

Stop steam delivery before removing the container with the frothed milk to avoid burns caused by splashes of boiling milk.

9. Add the milk froth to the cup of coffee prepared previously. The cappuccino is ready. Sweeten to taste and, if desired, sprinkle the froth with a little cocoa powder.

**i** Please note:

- If immediately after making cappuccino and deactivating the steam function by pressing the steam button ☞ you press the ☞ or ☞☞ button because you want to make another coffee, the coffee maker will be too hot (the ☞ and ☞☞ lights flash to indicate an unsuitable temperature). You must wait about ten minutes for the appliance to cool down sufficiently.

To cool it down more quickly, after deactivating the steam function, open the steam knob and let the water flow out of the cappuccino maker into a container until the lights ☞ and ☞☞ stop flashing.

### Cleaning the cappuccino maker after use.

Clean the cappuccino maker each time you use it to avoid the build-up of milk residues or blockages.

**ss** Important! Danger of burns

When cleaning the cappuccino maker, a little hot water is delivered.

Avoid contact with splashes of water.

1. Deliver a little water for a few seconds by rotating the steam knob to the I position. Then turn the steam knob to the 0 position to stop the flow of hot water.

2. Wait for a few minutes for the cappuccino maker to cool down. Grip the handle of the cappuccino maker tube firmly in one hand and with the other rotate the cappuccino maker anticlockwise (fig. 14) and remove by pulling downwards (fig. 15).
3. Wash all parts of the cappuccino maker thoroughly with a sponge and warm water.
4. Make sure the holes shown by the arrows in fig. 16 are not blocked. If necessary, clean with a pin.
5. Replace the inner section by inserting it carefully onto the adjustable tube, then insert the steam nozzle and turn anticlockwise to lock it in place.

## HOT WATER





**Important! Danger of burns.**

Never leave the machine unsupervised while delivering hot water.

As shown below, stop delivery of hot water when the cup is full.

The cappuccino maker becomes hot while water is being delivered and must be held by the handle only.

1. Place a container under the cappuccino maker (as close as possible to avoid splashes).
2. Check that the  and  lights are on steadily.
3. Turn the steam knob a half turn anticlockwise as far as it will go. Delivery begins.
4. Stop by turning the steam knob to the **0** position



**Please note:**

- If “Energy Saving” mode is active, you may have to wait a few seconds before the hot water is delivered.
- If you want to make steam after preparing hot water, it is recommended to empty the water circuits opening the steam knob for a few seconds.

## CLEANING

### Cleaning the coffee maker

The following parts of the machine must be cleaned regularly:


- coffee grounds container (A17),
- drip tray (A15),
- water tank (A12),
- coffee spouts (A18),
- pre-ground coffee funnel (A8),
- inside of the machine, accessible after opening the infuser door (A16),
- infuser (A20).0



**Important!**

- Do not use solvents, abrasive detergents or alcohol to clean the coffee maker. With De'Longhi superautomatic coffee makers, you need not use chemical products to clean the machine.
- None of the components can be washed in a dishwasher.
- Do not use metal objects to remove encrustations or coffee deposits as they could scratch metal or plastic surfaces.

### Cleaning the coffee grounds container

When the  light flashes, the coffee grounds container needs emptying. Unless you clean the grounds container, the light will continue to flash and the appliance cannot be used to make coffee.

To clean (with the machine on):

- Open the service door on the front of the appliance, extract the drip tray (fig. 17), empty and clean.
- Empty the grounds container and clean thoroughly to remove all residues left on the bottom.



**Important!**

When removing the drip tray, the grounds container **must** be emptied, even if it contains few grounds.

If this is not done, when you make the next coffees, the grounds container may fill up more than expected and clog the machine.

## Cleaning the drip tray



**Important!**

If the drip tray is not emptied regularly, the water could overflow from the edge and seep inside or around the machine.

This could damage the machine, the surface it rests on or the surrounding area.

The drip tray is fitted with a level indicator (red) showing the level of water it contains (fig. 18). Before the indicator protrudes from the cup tray, the drip tray must be emptied and cleaned.

To remove the drip tray:

1. Remove the drip tray and the grounds container (fig. 17);
2. Empty the drip tray and grounds container and wash them;
3. Replace the drip tray and grounds container.

## Cleaning the inside of the machine



**Danger of electric shock!**

Before cleaning internal parts, the machine must be turned off (see "Turning off") and unplugged from the mains power supply. Never immerse the coffee maker in water.

1. Check regularly (about once a month) that the inside of the appliance (accessible after removing the drip tray) is not dirty. If necessary, remove coffee deposits with the brush supplied and a sponge.
2. Remove the residues with a vacuum cleaner (fig. 19).

## Cleaning the water tank

1. Clean the water tank (A12) regularly using mild soapy water
2. Rinse the water tank thoroughly and fill the tank with fresh water and put back in the appliance.

## Cleaning the coffee spouts

1. Clean the coffee spouts with a sponge or cloth (fig. 21).
2. Check the holes in the coffee spout are not blocked. If necessary, remove coffee deposits with a toothpick (fig. 22).

## Cleaning the pre-ground coffee funnel

Check regularly (about once a month) that the pre-ground coffee funnel (A6) is not blocked. If necessary, remove coffee deposits with a brush.

## Cleaning the infuser

The infuser (A11) must be cleaned at least once a month.



**Important!**

The infuser must not be extracted when the machine is on.

1. Make sure the machine is correctly turned off (see Turning off).
2. Open the service door
3. Extract the drip tray and the grounds container (fig. 17).
4. Press the two red release buttons inwards and at the same time pull the infuser outwards (fig. 22).

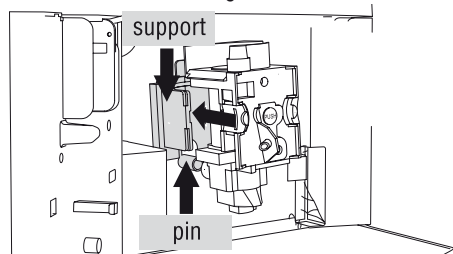


**Important!**

**RINSE WITH WATER ONLY**

**NO WASHING UP LIQUID - NO DISH WASHER**

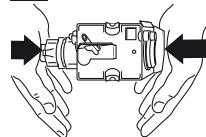
Do not use washing up liquid to clean the infuser as it could cause damage.



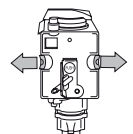
5. Soak the infuser in water for about 5 minutes, then rinse under the tap.
6. After cleaning, replace the infuser by sliding it onto the internal support and pin at the bottom, then push the PUSH symbol fully in until it clicks into place.



**Please note:**



If the infuser is difficult to insert, before insertion, adapt it to the right size by pressing the two levers




shown in the figure.

7. Once inserted, make sure the two



- red buttons have snapped out.
- Close the infuser door.
  - Replace the water tank.

## DESCALING

Descale the appliance when the  light on the panel flashes.



### *Important!*

Descaler contains acids which may irritate the skin and eyes.

It is vital to respect the manufacturer's safety warnings given on the descaler pack and the warnings relating to the procedure to follow in the event of contact with the skin and eyes.





### *Please note:*

Use De'Longhi descaler only.

Under no circumstances should you use sulphamic or acetic based descalers. Their use invalidates the guarantee.




Failure to descale the appliance as described above also invalidates the guarantee.

- Turn the machine on.
- Empty the water tank (A12).
- Pour the descaler diluted with water (respecting the proportions indicated on the descaler pack) into the water tank.  
Place an empty container with a minimum capacity of 1.5 litres under the hot water spout.
- Wait for the  and  lights to come on steadily.




### *Important! Danger of burns*

Hot water containing acid flows from the cappuccino maker. Avoid contact with splashes of water.

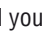
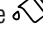
- Press the  button and hold it down for at least 5 seconds to confirm that you have added the solution and begin the descaling procedure. The light in the button remains on steadily to indicate that the descaling programme has begun (the  and  lights go out as coffee cannot be made).
- Turn the steam knob a half turn anticlockwise. The descaler solution flows out of the cappuccino maker into the underlying container.


The descale programme automatically per-

forms a series of rinses and pauses to remove limescale deposits from inside the machine.


After about 30 minutes, the water tank is empty and the  light comes on. Turn the steam knob a half turn clockwise as far as it will go.

The appliance is now ready for rinsing through with clean water.

- Empty the container used to collect the descaler solution and replace it empty under the cappuccino maker.
- Remove the water tank, empty, rinse under running water, fill with clean water and replace.
- Turn the steam knob a half turn anticlockwise. Hot water comes out of the spout.
- When the water tank is completely empty, the  light goes out and the  light comes on.
- Turn the knob to the 0 position, fill the water tank again and the appliance goes off automatically.

To use the appliance, turn it on by pressing the  button.

## SETTING WATER HARDNESS

The  message comes on after a period of time established according to water hardness.

The machine is set by default for a hardness value of 4 (very hard water).

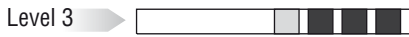
The machine can also be programmed according to the hardness of the mains water in the various regions so that the machine needs to be descaled less often.

### Measuring water hardness

- Remove the "TOTAL HARDNESS TEST" indicator paper attached to this manual from its pack.
- Immerse the paper completely in a glass of water for one second.
- Remove the paper from the water and shake lightly. After about a minute, 1, 2, 3, or 4 red squares form, depending on the hardness of the water. Each square corresponds to one level.

Level 1  

Level 2  



### Set water hardness

1. Make sure the appliance is off (but connected to the mains electricity supply and with the main switch in the I position);
  2. Press and hold the button for at least 6 seconds. The lights come on;
  3. Confirm the selection by pressing the button.
  4. Turn the selection knob and set the level shown by the indicator paper (see previous paragraph).
  5. Press the button to confirm the setting.
  6. Press the button to exit the menu.
- The machine is now reprogrammed with the new water hardness setting.

### SETTING THE TEMPERATURE

To modify the temperature of the water used to make the coffee, proceed as follows:

1. With the appliance off and the main switch in the I position (fig. 3), press the button and hold it down until the lights on the control panel come on.
2. Press the button to select the required temperature:



3. Press the button to confirm the selection. The lights go off.

### TECHNICAL SPECIFICATION

Voltage: 220-240 V~ 50/60 Hz max. 10 A

Absorbed power: 1450 W

Pressure: 15 bar

Water tank capacity: 1,7 L

Size: LxHxD: 280x364x400 mm

Cable length: 1,5 m

Weight: 10,8 kg

**CE** The appliance complies with the following EC directives:

- Stand-by Directive no. 1275/2008;
- Low Voltage Directive 2006/95/EC and subsequent amendments;
- EMC Directive 2004/108/EC and subsequent amendments
- Materials and accessories coming into contact with food conform to EEC regulation 1935/2004.

### DISPOSAL

Important information for correct disposal of the product in accordance with EC Directive 2002/96/EC.









At the end of its working life, the product must not be disposed of as urban waste.

It must be taken to a special local authority differentiated waste collection centre or to a dealer providing this service.



Disposing of a household appliance separately avoids possible negative consequences for the environment and health deriving from inappropriate disposal and enables the constituent materials to be recovered to obtain significant savings in energy and resources.




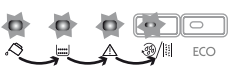




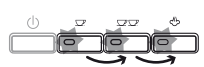
As a reminder of the need to dispose of household appliances separately, the product is marked with a rubbish bin bearing a cross.

## MEANING OF LIGHTS DURING NORMAL OPERATION

LIGHTS	DESCRIPTION	MEANING
1 	The lights flash	The water is not yet at the ideal temperature. Wait for the lights to come on steadily before making coffee
2 	The lights are on steadily	The appliance is ready to make coffee
3 	The light is on steadily	The appliance is delivering one cup of coffee
4 	The light is on steadily	The appliance is delivering two cups of coffee
5 	The steam light is flashing	Wait for the light to remain on steadily before using the steam function
6 	The steam light is on steadily	The appliance is ready to deliver steam
7 	The light is on steadily	The appliance is in energy saving mode
8 	The light is on steadily	The automatic descaling programme is underway

## MEANING OF THE ALARM LIGHTS


LIGHTS	DESCRIPTION	MEANING	WHAT TO DO
1 	The light is on steadily	Insufficient water in the tank	Fill the tank with water and/or insert it correctly, pushing it as far as it will go until it clicks into place.
		The tank is dirty or clogged with limescale	Rinse or descale the tank
2 	The light flashes	The grinding is too fine and the coffee is delivered too slowly	Repeat coffee delivery and turn the grinding adjustment knob (fig. 10) one click clockwise towards "7" while the coffee mill is in operation. If after making at least 2 coffees delivery is still too slow, repeat the correction procedure, turning the grinding adjustment knob another click until delivery is correct (see the section: "Adjusting the coffee mill").
		The machine is not able to make coffee	If the problem persists, turn the steam knob to the I position and deliver water from the cappuccino maker

LIGHTS	DESCRIPTION	MEANING	WHAT TO DO
<b>3</b> 	The light is on steadily	The grounds container is full or missing	Empty the grounds container and drip tray, clean and replace (fig. 23). Important: when removing the drip tray, the grounds container MUST be emptied, even if it contains few grounds. If this is not done, when you make the next coffees, the grounds container may fill up more than expected and clog the machine
<b>4</b> 	The light flashes	The “pre-ground coffee” function has been selected without placing any pre-ground coffee in the funnel	Place pre-ground coffee in the funnel or deselect the “pre-ground” function
<b>5</b> 	The light flashes	The machine must be descaled	The descaling procedure described in the section “Descaling” needs to be performed as soon as possible.
		The coffee beans have run out	Fill the beans container
		If the coffee mill is very noisy, this means a small stone in the coffee beans has blocked the mill.	Contact Customer Services
<b>6</b> 	There is an unusual noise and the lights flash alternately	The infuser has not been replaced after cleaning	Insert the infuser as described in the paragraph “Cleaning the infuser”
<b>7</b> 	The lights flash alternately	The coffee maker has just been turned on, the infuser is not inserted correctly and the service door is not correctly closed.	Press the word PUSH on the infuser until it clicks into place. Make sure the two red buttons have snapped out. Close the service door and turn the appliance on again
<b>8</b> 	The lights flash	The pre-ground coffee funnel is clogged	Empty the funnel with the help of a brush as described in the section “Cleaning the pre-ground coffee funnel”.
<b>9</b> 	The light is on steadily	The infuser has not been replaced after cleaning.	Insert the infuser as described in the paragraph “Cleaning the infuser”
		The inside of the appliance is very dirty	Clean the appliance thoroughly
<b>10</b> 	The light flashes	The service door is open	If you cannot close the door, make sure the infuser is correctly inserted
<b>11</b> 	The lights flash	The coffee maker has been switched on with the steam knob in the open position	Turn the steam knob clockwise until delivery stops

## TROUBLESHOOTING

Below is a list of some of the possible malfunctions.

If the problem cannot be resolved as described, contact Customer Services.

PROBLEM	POSSIBLE CAUSE	SOLUTION
The coffee is not hot	<ul style="list-style-type: none"> <li>The cups were not preheated.</li> </ul>	<ul style="list-style-type: none"> <li>Warm the cups by rinsing them with hot water (N.B. you can use the hot water function).</li> </ul>
	<ul style="list-style-type: none"> <li>The infuser has cooled down because 2/3 minutes have elapsed since the last coffee was made.</li> </ul>	<ul style="list-style-type: none"> <li>Before making coffee, heat the infuser by pressing the  button.</li> </ul>
The coffee is weak or not creamy enough.	<ul style="list-style-type: none"> <li>The coffee is ground too coarsely.</li> </ul>	<ul style="list-style-type: none"> <li>Turn the grinding adjustment knob one click anticlockwise towards "1" while the coffee mill is in operation (fig. 7). The effect is only visible after delivering 2 coffees (see the section: "Adjusting the coffee mill" on page 11).</li> </ul>
	<ul style="list-style-type: none"> <li>The coffee is unsuitable.</li> </ul>	<ul style="list-style-type: none"> <li>Use pre-ground coffee for espresso coffee makers.</li> </ul>
The coffee is delivered too slowly or a drop at a time.	<ul style="list-style-type: none"> <li>The coffee is ground too finely.</li> </ul>	<ul style="list-style-type: none"> <li>Turn the grinding adjustment knob one click clockwise towards "7" while the coffee mill is in operation (fig. 7). Continue one click at a time until coffee delivery is satisfactory. The effect is only visible after delivering 2 coffees (see the section: "Adjusting the coffee mill" on page 11).</li> </ul>
Coffee does not come out of one of the spouts.	<ul style="list-style-type: none"> <li>The spouts are blocked.</li> </ul>	<ul style="list-style-type: none"> <li>Clean the spouts with a toothpick.</li> </ul>
The frothed milk has large bubbles	<ul style="list-style-type: none"> <li>The milk is not cold enough or is not semi-skimmed.</li> </ul>	<ul style="list-style-type: none"> <li>You should ideally use skimmed or semi-skimmed milk at refrigerator temperature (about 5°C). If the result is not as you wished, try changing brand of milk.</li> </ul>
The milk is not frothed	<ul style="list-style-type: none"> <li>Cappuccino maker dirty.</li> </ul>	<ul style="list-style-type: none"> <li>Clean as described in the section "Cleaning the cappuccino maker after use"</li> </ul>
Steam delivery stops	<ul style="list-style-type: none"> <li>A safety device stops steam delivery after 3 minutes.</li> </ul>	<ul style="list-style-type: none"> <li>Wait, then activate the steam function again.</li> </ul>
The appliance does not come on.	<ul style="list-style-type: none"> <li>It is not plugged into the mains socket.</li> </ul>	<ul style="list-style-type: none"> <li>Plug into the mains socket.</li> </ul>
	<ul style="list-style-type: none"> <li>The main switch is not turned on.</li> </ul>	<ul style="list-style-type: none"> <li>Place the main switch in the I position (fig. 3).</li> </ul>

## ELECTRICAL REQUIREMENTS

Before using this appliance ensure that the voltage indicated on the product corresponds with the main voltage in your home, if you are in any doubt about your supply contact your local electricity company.

The flexible mains lead is supplied connected to a B.S. 1363 fused plug having a fuse of 13 amp capacity.

Should this plug not fit the socket outlets in your home, it should be cut off and replaced with a suitable plug, following the procedure outlined below.

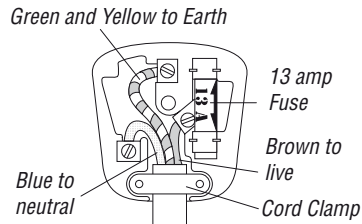
**Note:** Such a plug cannot be used for any other appliance and should therefore be properly disposed of and not left where children might find it and plug it into a supply socket - with the obvious consequent danger.

**N.B.** We recommend the use of good quality plugs and wall sockets that can be switched off when the machine is not in use.

**IMPORTANT:** the wires in the mains lead fitted to this appliance are coloured in accordance with the following code:

GREEN AND YELLOW  
BLUE  
BROWN

EARTH  
NEUTRAL  
LIVE



As the colours of the wires in the mains lead of this appliance may not correspond with the coloured markings identifying the terminals in your plug, proceed as follows:

- The wire which is coloured green and yellow must be connected to the terminal in the plug which is marked with the letter E or by the earth symbol  $\perp$  or coloured green or green and yellow.
- The wire which is coloured blue must be connected to the terminal which is marked with the letter N or coloured black.
- The wire which is coloured brown must be connected to the terminal which is marked with the letter L or coloured red.

When wiring the plug, ensure that all strands of wire are securely retained in each terminal. Do not forget to tighten the mains lead clamp on the plug. If your electricity supply point has only two pin socket outlets, or if you are in doubt, consult a qualified electrician.

Should the mains lead ever require replacement, it is essential that this operation be carried out by a qualified electrician and should only be replaced with a flexible cord of the same size.

After replacement of a fuse in the plug, the fuse cover must be refitted. If the fuse cover is lost, the plug must not be used until a replacement cover is obtained. The colour of the correct replacement fuse cover is that of the coloured insert in the base of the fuse recess or elsewhere on the plug. Always state this colour when ordering a replacement fuse cover.

Only 13amp replacement fuses which are asta approved to B.S. 1362 should be fitted.

This appliance conforms to the Norms EN 55014 regarding the suppression of radio interference.

**Warning - this appliance must be earthed**

## Free Manuals Download Website

<http://myh66.com>

<http://usermanuals.us>

<http://www.somanuals.com>

<http://www.4manuals.cc>

<http://www.manual-lib.com>

<http://www.404manual.com>

<http://www.luxmanual.com>

<http://aubethermostatmanual.com>

Golf course search by state

<http://golfingnear.com>

Email search by domain

<http://emailbydomain.com>

Auto manuals search

<http://auto.somanuals.com>

TV manuals search

<http://tv.somanuals.com>