

instructions



DRAGON HM3

Please retain these instructions for future reference



Living innovation

Thank you for choosing this De'Longhi radiator. To get the very best out of your new radiator it is advisable to read these instructions before using it. This will ensure that you gain optimum results and use the appliance safely.

General instructions

Take the radiator out of its packing box and remove any polystyrene pieces or any other packaging material that might be lodged inside it.

Make sure that the radiator has not been damaged during transit and that the mains cable is in working order. Do not operate the radiator if damaged.

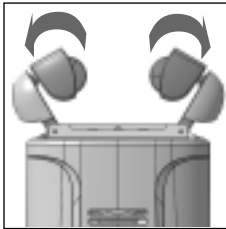


Fig.1

“Easy wheel” system

Turn the radiator upside-down on a rug or a soft surface in order to prevent damaging the paint finish. Fully unfold the castors by turning them outwards (Fig. 1).

Turn the radiator back to its upright position.

Electrical connection

- Before plugging the radiator into the mains, check that your supply voltage is the same as that shown on the rating plate of the radiator.
- If using more than one appliance at a time, it is important to ensure that the ring main is adequate to cope with the power requirements.
- It is important to ensure that the socket is adequately earthed.
- This radiator complies with EEC Directive 89/336 relating to electromagnetic compatibility.

How to use it

Switching on

Plug the radiator in; position the thermostat slider to maximum and turn the radiator on as follows using the power selector:

- Turn the power selector to position **1** to select minimum output (the light on the left will come on).
- Turn the power selector to position **2** to select medium output (the light on the right will come on).
- Turn the power selector to position **3** to select maximum output (both lights will come on).

Adjusting the thermostat

Leave the thermostat at its highest setting until the room has reached the required temperature. Then slowly turn the thermostat slider back until you hear a click. The temperature selected in this way will then be regulated automatically and kept constant by the thermostat.

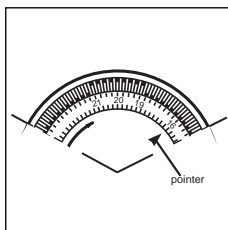


Fig.2

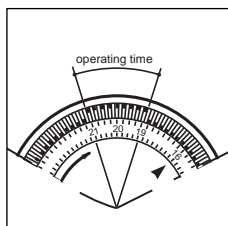



fig.3

Frost protection function

With the thermostat slider in the minimum position and a power selected, the unit maintains the room at a temperature of about 5°C, preventing freezing with minimum energy consumption.

Models with 24-hour timer

Using the timer

If you wish to use the timer, position the switch in the middle position  (Fig. 4).

Setting the correct time


Check the time on your watch. If for example it is 4.00 pm. (16.00), turn the dial in a clockwise direction until the number 16 is lined up with the triangular pointer (fig.2).

N.B.: Never turn the dial in an anti-clockwise direction!


The timer is in effect an electric clock and works only if the plug is connected to the power supply. Whenever the plug is disconnected or there is a power failure, the clock must be re-set.

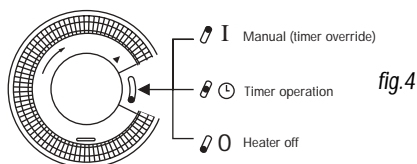
To program the timer

- 1) Set the operating times by pushing out with your thumbnail to the outer rim, the notches on the dial corresponding to the period required (fig.3) (each notch represents 15 mins.)
- 2) Make sure that the timer indicates the correct time (see instructions on setting the correct time).
- 3) Turn the radiator on and set it to the heat setting and temperature level on the thermostat as required.

Once programmed in this way, the appliance will repeat the pre-established program every day, if the selector is in the  position.

Timer override

If you wish to override the timer settings, push the timer switch to position 1 (fig.4) manual (timer override). To return to timed operation push the switch back to the middle position  (fig.4).



NOTE: if the timer switch is at the 0 position (fig.4), the heater is off and will not operate).

Cleaning and maintenance

Your oil filled radiator is absolutely free from maintenance, fully reliable and will give many years of trouble free service. Wipe radiator with soft damp cloth; do not use detergents or abrasives.

If necessary, use a vacuum cleaner to remove any built-up dirt.

Important notes

- Do not use your radiator close to bath, wash-basin, shower and swimming pool.
- Do not use your radiator to dry laundry.
- Never place the power cable on top of the radiator while it is hot.
- Only use the radiator in an upright position.
- The heater must be positioned at least 50 cm from furniture or other objects.
- If the power cable has been damaged, it must be replaced by the manufacturer or the technical service centre or by a qualified person so as to avoid all risks.
- In order to eliminate the radiator's "new" smell, set it to maximum power for at least 8 hours when used for the first time. During this operation, the room in which the radiator is located must be ventilated.
- It is perfectly normal for the radiator to make "creaking" sounds when used for the first time. (or in the case of unrequent use).
- The radiator must not be located immediately below a fixed socket-outlet.
- The body of this radiator is filled with a precise quantity of special oil, so that repairs requiring the opening of the oil body must only be made by the service agent. Any oil leakage must be reported to the service agent.
- Do not use this appliance in rooms having a floor area of less than 4m² as this can lead to overheating.
- If the appliance is scrapped, provisions on the disposal of oil must be respected.
- The use of an extension lead is not recommended, as overheating of the extension lead may occur during the operation of the radiator.
- As with any electrical appliance, whilst the instructions aim to cover as many eventualities as possible, caution and common sense should be applied when operating your appliance, particularly in the vicinity of young children.

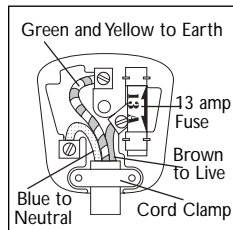
The appliance is fitted with a **safety device** which will switch off it in case of accidental overheating. To reset, disconnect the plug from the power for 30 minutes, remove the cause of overheating then plug the appliance in again.

ATTENTION: in order to avoid any danger caused by an accidental resetting of the safety system, this appliance must not be powered through an external timer.



IMPORTANT: Do not cover the radiator during operation as this could lead to dangerous overheating,

Warning - this appliance must be earthed



Electrical requirements

Before using this appliance ensure that the voltage indicated on the product corresponds with the main voltage in your home, if you are in any doubt about your supply contact your local electricity company.

The flexible mains lead is supplied connected to a B.S. 1363 fused plug having a fuse of 13 amp capacity. Should this plug not fit the socket outlets in your home, it should be cut off and replaced with a suitable plug, following the procedure outlined below.

Note: Such a plug cannot be used for any other appliance and should therefore be properly disposed of and not left where children might find it and plug it into a supply socket - with the obvious consequent danger.

N.B. We recommend the use of good quality plugs and wall sockets that can be switched off when the machine is not in use.

important: the wires in the mains lead fitted to this appliance are coloured in accordance with the following code:

GREEN AND YELLOW	EARTH
BLUE	NEUTRAL
BROWN	LIVE

As the colours of the wires in the mains lead of this appliance may not correspond with the coloured markings identifying the terminals in your plug, proceed as follows:

The wire which is coloured green and yellow must be connected to the terminal in the plug which is marked with the letter E or by the earth symbol \perp or coloured green or green and yellow.

The wire which is coloured blue must be connected to the terminal which is marked with the letter N or coloured black.

The wire which is coloured brown must be connected to the terminal which is marked with the letter L or coloured red.

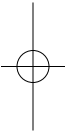
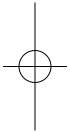
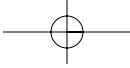
When wiring the plug, ensure that all strands of wire are securely retained in each terminal. Do not forget to tighten the mains lead clamp on the plug. If your electricity supply point has only two pin socket outlets, or if you are in doubt, consult a qualified electrician.

Should the mains lead ever require replacement, it is essential that this operation be carried out by a qualified electrician and should only be replaced with a flexible cord of the same size.

After replacement of a fuse in the plug, the fuse cover must be refitted. If the fuse cover is lost, the plug must not be used until a replacement cover is obtained. The colour of the correct replacement fuse cover is that of the coloured insert in the base of the fuse recess or elsewhere on the plug. Always state this colour when ordering a replacement fuse cover.

Only 13amp replacement fuses which are approved to B.S. 1362 should be fitted.

This appliance conforms to the Norms EN 55014 regarding the suppression of radio interference.



5710008300/05.04



Free Manuals Download Website

<http://myh66.com>

<http://usermanuals.us>

<http://www.somanuals.com>

<http://www.4manuals.cc>

<http://www.manual-lib.com>

<http://www.404manual.com>

<http://www.luxmanual.com>

<http://aubethermostatmanual.com>

Golf course search by state

<http://golfingnear.com>

Email search by domain

<http://emailbydomain.com>

Auto manuals search

<http://auto.somanuals.com>

TV manuals search

<http://tv.somanuals.com>