

# **DeVILBISS AIR POWER COMPANY**

## **Air Compressor**

---

## **OPERATOR'S MANUAL**

### **Compact Air Compressor**

---

**SAFETY • ASSEMBLY • OPERATION • MAINTENANCE • STORAGE •  
TROUBLESHOOTING • ESPAÑOL • FRANÇAIS**



Register your product on line at [www.devap.com](http://www.devap.com)

---

**⚠ WARNING** Read Operator's Manual. Do not operate equipment until you have read this Operator's Manual for **Safety, Assembly, Operation, and Maintenance** Instructions.

---

## TABLE OF CONTENTS

<b>SAFETY GUIDELINES-DEFINITIONS</b> . . . . .	.2
<b>IMPORTANT SAFETY INSTRUCTIONS</b> . . . . .	.2-6
<b>ON-RECEIPT INSPECTION</b> . . . . .	.7
<b>GLOSSARY</b> . . . . .	.7
<b>DUTY CYCLE</b> . . . . .	.7
<b>ACCESSORIES</b> . . . . .	.7
<b>INSTALLATION</b> . . . . .	.8-9
<b>OPERATION</b> . . . . .	.10-11
<b>SERVICE AND ADJUSTMENTS</b> . . . . .	.11
<b>STORAGE</b> . . . . .	.11
<b>TROUBLESHOOTING GUIDE</b> . . . . .	.12
<b>WARRANTY</b> . . . . .	.13
<b>NOTES</b> . . . . .	.14
<b>ESPAÑOL</b> . . . . .	.15-28
<b>FRANÇAIS</b> . . . . .	.29-44

## SAFETY GUIDELINES - DEFINITIONS

This manual contains information that is important for you to know and understand. This information relates to protecting **YOUR SAFETY** and **PREVENTING EQUIPMENT PROBLEMS**. To help you recognize this information, we use the symbols below. Please read the manual and pay attention to these symbols.

<p><b>⚠ DANGER</b> Indicates an imminently hazardous situation which, if not avoided, <b>will</b> result in <b>death or serious injury</b>.</p>	<p><b>⚠ CAUTION</b> Indicates a potentially hazardous situation which, if not avoided, <b>may</b> result in <b>minor or moderate injury</b>.</p>
<p><b>⚠ WARNING</b> Indicates a potentially hazardous situation which, if not avoided, <b>could</b> result in <b>death or serious injury</b>.</p>	<p><b>CAUTION</b> Used without the safety alert symbol indicates a potentially hazardous situation which, if not avoided, <b>may</b> result in <b>property damage</b>.</p>

## IMPORTANT SAFETY INSTRUCTIONS

**⚠ WARNING** Some dust created by power sanding, sawing, grinding, drilling, and other construction activities contains chemicals known (to the State of California) to cause cancer, birth defects or other reproductive harm. Some example of these chemicals are:

- lead from lead-based paints
- crystalline silica from bricks and cement and other masonry products
- arsenic and chromium from chemically-treated lumber

Your risk from these exposures varies, depending on how often you do this type of work. To reduce your exposure to these chemicals: work in a well ventilated area, and work with approved safety equipment, always wear **MSHA/NIOSH** approved, properly fitting face mask or respirator when using such tools.

When using air tools, basic safety precautions should always be followed to reduce the risk of of personal injury.

# IMPORTANT SAFETY INSTRUCTIONS



**Save these instructions**



Improper operation or maintenance of this product could result in serious injury and property damage. Read and understand all warnings and operation instructions before using this equipment.

## HAZARD

**WARNING: Risk of explosion or fire**



What Could Happen	How To Prevent It
<p><b>It is normal for electrical contacts</b> within the motor and pressure switch <b>to spark.</b></p>	<p>Always <b>operate the compressor in a well ventilated area free of combustible materials, gasoline, or solvent vapors.</b></p>
<p>If electrical <b>sparks</b> from compressor <b>come into contact with flammable vapors, they may ignite, causing fire or explosion.</b></p>	<p>If spraying flammable materials, <b>locate compressor at least 20 feet away from spray area.</b> An additional length of hose may be required.  <b>Store flammable materials in a secure location away from compressor.</b></p>
<p><b>Restricting any of the compressor ventilation openings</b> will cause serious overheating and <b>could cause fire.</b></p>	<p><b>Never place objects against or on top of compressor. Operate compressor</b> in an open area <b>at least 12 inches away from any wall or obstruction</b> that would restrict the flow of fresh air to the ventilation openings.                      Operate compressor in a clean, dry well ventilated area. <b>Do not operate unit indoors or in any confined area.</b></p>
<p><b>Unattended operation</b> of this product <b>could result in personal injury or property damage. To reduce the risk of fire, do not allow the compressor to operate unattended.</b></p>	<p><b>Always remain in attendance</b> with the product when it is operating.  <b>Always disconnect electrical power by moving pressure switch lever to the off position and drain tank daily or after each use.</b></p>

## HAZARD

### WARNING: Risk from Flying Objects



WHAT CAN HAPPEN	HOW TO PREVENT IT
<p>The <b>compressed air stream can cause soft tissue damage</b> to exposed skin and <b>can propel</b> dirt, chips, <b>loose particles</b>, and small objects <b>at high speed</b>, resulting in property damage or personal injury.</p>	<p>Always wear <b>ANSI Z87.1 approved safety glasses with side shields</b> when using the compressor.</p> <p><b>Never point any nozzle or sprayer toward</b> any part of the body or at other <b>people or animals</b>.</p> <p>Always <b>turn the compressor off and bleed pressure</b> from the air hose and tank before attempting maintenance, attaching tools or accessories.</p>

## HAZARD

### WARNING: Risk of Electrical Shock



WHAT CAN HAPPEN	HOW TO PREVENT IT
<p>Your <b>air compressor is powered by electricity</b>. Like any other electrically powered device, <b>if it is not used properly it may cause electric shock</b>.</p>	<p><b>Never operate</b> the compressor <b>outdoors when it is raining or in wet conditions</b>.</p> <p><b>Never operate compressor with protective covers removed</b> or damaged.</p>
<p><b>Repairs attempted by unqualified personnel can result in serious injury or death by electrocution</b>.</p>	<p>Any <b>electrical wiring or repairs</b> required on this product <b>should be performed by authorized service center personnel</b> in accordance with national and local electrical codes.</p>
<p>Electrical Grounding: <b>Failure to provide adequate grounding to this product could result in serious injury or death from electrocution</b>. See grounding instructions.</p>	<p><b>Make certain that the electrical circuit to which the compressor is connected provides proper electrical grounding, correct voltage and adequate fuse protection</b>.</p>

## HAZARD

### WARNING: Risk to Breathing



WHAT CAN HAPPEN	HOW TO PREVENT IT
<p>The <b>compressed air</b> directly from your compressor <b>is not safe for breathing</b>. The <b>air stream may contain carbon monoxide, toxic vapors, or solid particles</b> from the tank. <b>Breathing</b> these contaminants can cause serious injury or death.</p>	<p><b>Air</b> obtained directly from the compressor <b>should never be used to supply air for human consumption</b>. In order to use air produced by this compressor for breathing, suitable <b>filters and in-line safety equipment must be properly installed</b>. In-line <b>filters and safety equipment</b> used in conjunction with the compressor <b>must be capable of treating air to all applicable local and federal codes prior to human consumption</b>.</p>
<p><b>Sprayed materials</b> such as paint, paint solvents, paint remover, insecticides, weed killers, may <b>contain harmful vapors and poisons</b>.</p>	<p><b>Work in an area with good cross ventilation</b>. Read and <b>follow the safety instructions</b> provided on the label or safety data sheets <b>for the materials you are spraying</b>. Use a <b>NIOSH/ MSHA approved respirator</b> designed for use with your specific application.</p>

## HAZARD

### WARNING: RISK OF BURNS



WHAT CAN HAPPEN	HOW TO PREVENT IT
<p><b>Touching exposed metal</b> such as the compressor head or outlet tubes, <b>can result in serious burns</b>.</p>	<p><b>Never touch any exposed metal parts on compressor</b> during or immediately after operation. <b>Compressor will remain hot</b> for several minutes after operation. <b>Do not</b> reach around protective shrouds or <b>attempt maintenance until unit has been allowed to cool</b>.</p>

## HAZARD

### WARNING: RISK FROM MOVING PARTS



WHAT CAN HAPPEN	HOW TO PREVENT IT
<p><b>Moving parts</b> such as the pulley, flywheel, and belt <b>can cause serious injury</b> if they come into contact with you or your clothing.</p>	<p><b>Never operate the compressor with guards or covers which are damaged or removed.</b></p>
<p><b>Attempting to operate compressor with damaged or missing parts</b> or attempting to repair compressor with protective shrouds removed can expose you to moving parts and <b>can result in serious injury.</b></p>	<p>Any <b>repairs</b> required on this product <b>should be performed by authorized service center personnel.</b></p>

## HAZARD

### WARNING: RISK OF FALLING



WHAT CAN HAPPEN	HOW TO PREVENT IT
<p>A portable <b>compressor can fall</b> from a table, workbench, or roof <b>causing damage to the compressor and could result in serious injury or death to the operator.</b></p>	<p>Always <b>operate compressor in a stable secure position</b> to prevent accidental movement of the unit. <b>Never operate compressor on a roof or other elevated position. Use additional air hose to reach high locations.</b></p>

## HAZARD

### WARNING: RISK OF UNSAFE OPERATION



WHAT CAN HAPPEN	HOW TO PREVENT IT
<p><b>Unsafe operation</b> of your air compressor could lead to <b>serious injury or death to you or others.</b></p>	<p><b>Review and understand</b> all instructions and <b>warnings</b> in this manual.</p> <p><b>Become familiar with the operation and controls</b> of the air compressor.</p> <p><b>Keep operating area clear</b> of all persons, pets, and obstacles.</p> <p><b>Keep children away</b> from the air compressor <b>at all times.</b></p> <p><b>Do not operate</b> the product <b>when fatigued or under the influence of alcohol or drugs. Stay alert at all times.</b></p> <p><b>Never defeat the safety features</b> of this product.</p> <p><b>Equip area of operation with a fire extinguisher.</b></p> <p><b>Do not operate machine with missing, broken, or unauthorized parts.</b></p>

## ON-RECEIPT INSPECTION

Each air compressor outfit is carefully checked before shipment. With improper handling, damage may result in transit and cause problems in air compressor operation.

Immediately upon arrival, check equipment for both concealed and visible damages to avoid expenses being incurred to correct such problems. This should be done regardless of any visible signs of damage to the shipping container.

Report any damages to carrier and arrange for inspection of goods immediately.

For the location or a listing of the nearest Authorized Warranty Service Center, call our toll free number at 1-800-888-2468, Ext. 2.

**NOTE: Photographs and line drawings used in this manual are for reference only and do not represent a specific model.**

## GLOSSARY

Become familiar with these terms before operating the unit.

**CFM:** Cubic feet per minute.

**SCFM:** Standard cubic feet per minute; a unit of measure of air delivery.

**PSIG:** Pounds per square inch gauge; a unit of measure of pressure.

**Code Certification:** Products that bear one or more of the following marks: UL, CUL, ETL, CETL, have been evaluated by OSHA certified independent safety laboratories and meet the applicable Underwriters Laboratories Standards for Safety.

**Branch Circuit:** Circuit carrying electricity from electrical panel to outlet.

## DUTY CYCLE

Air compressors should be operated on not more than a 50% duty cycle. This means an air compressor that pumps air more than 50% of one hour is considered misuse, because the air compressor is undersized for the required air demand. Maximum compressor pumping time per hour is 30 minutes.

## ACCESSORIES

Accessories for this unit are available at the store the unit was purchased.

# INSTALLATION

## HOW TO SET UP YOUR UNIT

### Location of the Air Compressor

Locate the air compressor in a clean, dry and well ventilated area. The air compressor pump and shroud are designed to allow for proper cooling. The ventilation openings on the compressor are necessary to maintain proper operating temperature. Do not place rags or other containers on or near these openings.

### GROUNDING INSTRUCTIONS

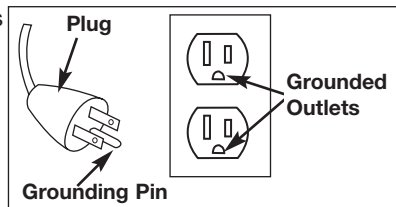
**⚠ WARNING** **RISK OF ELECTRICAL SHOCK.** In the event of a short circuit, grounding reduces the risk of shock by providing an escape wire for the electric current. This air compressor must be properly grounded.

The portable air compressor is equipped with a cord having a grounding wire with an appropriate grounding plug (see following illustrations). The plug must be used with an outlet that has been installed and grounded in accordance with all local codes and ordinances.

1. The cord set and plug with this unit contains a grounding pin. This plug **MUST** be used with a grounded outlet.

**IMPORTANT:** The outlet being used must be installed and grounded in accordance with all local codes and ordinances.

2. Make sure the outlet being used has the same configuration as the grounded plug. **DO NOT USE AN ADAPTER.** See illustration.
3. Inspect the plug and cord before each use. Do not use if there are signs of damage.



4. If these grounding instructions are not completely understood, or if in doubt as to whether the compressor is properly grounded, have the installation checked by a qualified electrician.

**⚠ WARNING** **IMPROPER GROUNDING CAN RESULT IN ELECTRICAL SHOCK.**

**Do not modify the plug provided. If it does not fit the available outlet, a correct outlet should be installed by a qualified electrician.**

**Repairs to the cord set or plug **MUST** be made by a qualified electrician.**



## Extension Cords

Using extension cords is not recommended. The use of extension cords will cause voltage to drop resulting in power loss to the motor and overheating. Instead of using an extension cord, increase the working reach of the air hose by attaching another length of hose to its end. Attach additional lengths of hose as needed.

If an extension cord must be used, be sure it is:

- a 3-wire extension cord that has a 3-blade grounding plug, and a 3-slot receptacle that will accept the plug on the product
- in good condition
- no longer than 50 feet
- 14 gauge (AWG) or larger. (Wire size increases as gauge number decreases. 12 AWG, 10 AWG, and 8 AWG may also be used. DO NOT USE 16 OR 18 AWG.)

## Voltage and Circuit Protection

Refer to the Parts Manual for the voltage and minimum branch circuit requirements.

Certain air compressors can be operated on a 15 amp circuit if the following conditions are met.

1. Voltage supply is 108V-132V AC at the outlet.
2. Circuit is not used to supply any other electrical needs (lights, appliances, etc.).
3. Circuit is equipped with a 15 amp circuit breaker minimum or 15 amp time delay fuse. **NOTE:** If compressor is connected to a circuit protected by fuses, use only time delay fuses marked "D" for Canada and "T" for US.
4. Extension cords comply with specifications.

If any of the above conditions cannot be met, or if operation of the compressor repeatedly causes interruption of the power, it may be necessary to operate it from a 20 amp circuit. It is not necessary to change the cord set.

# OPERATION

## Know Your Air Compressor

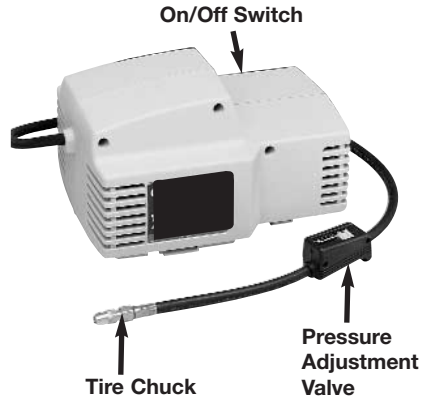
READ THIS OWNER'S MANUAL AND SAFETY RULES BEFORE OPERATING YOUR UNIT. Compare the illustrations with your unit to familiarize yourself with the location of various controls and adjustments. Save this manual for future reference.

### DESCRIPTION OF OPERATION

**Pressure Adjustable Valve:** The pressure valve controls the amount of pressure going from the air compressor to the accessory. The pressure adjustable valve can be used to set approximate pressure between 10 and 125 PSI (125 PSI is the highest pressure this compressor will deliver).

**On/Off Switch (located on opposite side of air compressor):** Used to turn air compressor on and off.

**Tire Chuck:** Adapter for inflating tires.



### HOW TO STOP

1. Set the On/Off switch to "OFF".

### TO USE TIRE CHUCK

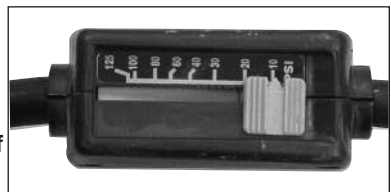
1. Attach tire chuck to hose and tighten securely.
2. See the "How to Start" paragraph to start air compressor.
3. Place the female tire chuck onto the tire valve stem of the tire to be inflated.
4. Slowly increase the pressure setting of the adjustable pressure valve to the tire manufacturer's recommended PSI. **Note:** To ensure correct tire pressure use a tire pressure gauge.



### BEFORE STARTING

1. Place On/Off switch to "OFF".
2. Place the adjustable pressure valve to 10 PSI.
3. Attach hose and accessories.

**⚠ WARNING** Too much air pressure causes a hazardous risk of bursting. Check the manufacturer's maximum pressure rating for air tools and accessories. Carefully follow the "How to Start" instructions.



## HOW TO START

1. Place On/Off switch to "OFF".
2. Plug the power cord into the grounded outlet.
3. Place On/Off switch to "ON" to start compressor.
4. Check the manufacturer's maximum pressure rating for the air tool, accessory, or vehicle tire being used. The air compressor outlet pressure must never exceed the maximum pressure rating.
5. Slowly increase the pressure setting of the adjustable pressure valve. You should be able to hear and feel air pressure being relieved by the adjustable pressure valve. If pressure is not being relieved, turn the air compressor off immediately. The pressure valve must be replaced.

**⚠ CAUTION** Compressed air from the outfit may contain water condensation. Do not spray unfiltered air at an item that could be damaged. Some air operated tools or devices may require filtered air. Read the instructions for the air tool or device.

## SERVICE AND ADJUSTMENTS

### Air Hose Replacement

The air hose attached to your compressor has an integral pressure adjusting valve at the working end of the hose. Should service or replacement be required, make sure that the pressure adjusting valve is present in the air hose line.

**⚠ WARNING** DO NOT replace the hose with standard hose that is not equipped with the pressure adjusting valve.

**⚠ CAUTION** Do not allow hose to become kinked or pinched at any time. This is important to avoid damage to your compressor and to maintain pressure adjusting valve control.

## STORAGE

1. Set the On/Off switch to "OFF" and unplug the cord.
2. Relieve all pressure from the air compressor head and air hose by turning the adjustable pressure valve to 10 PSI.
3. Protect the electrical cord and air hose from damage by winding them loosely around the air compressor.
4. Store the air compressor in a clean and dry location.

## TROUBLESHOOTING

**⚠ WARNING** Voltage sources, moving parts, or compressed air sources are exposed when repairing the compressor. Personal injury can occur. Unplug the compressor before attempting any repairs.

PROBLEM	CAUSE	CORRECTION
<p>Air Leaks</p> <p>Compressor is not delivering enough air.</p>	<p>Hose fitting loose.</p> <p>Prolonged excessive use of air.</p> <p>Hole in hose.</p> <p>Air leaks.</p>	<p>Tighten fitting.</p> <p>Decrease the amount of air usage. Your compressor is not large enough for the air requirement.</p> <p>Replace the hose.</p> <p>Tighten fittings.</p>
<p>Motor will not run.</p>	<p>Fuse blown, circuit breaker tripped.</p> <p>Extension cord is wrong length or gauge.</p> <p>Loose electrical connections.</p> <p>Faulty motor.</p>	<ol style="list-style-type: none"> <li>1. Check fuse box for blown fuse and replace as necessary. Reset circuit breaker. Do not use a fuse or circuit breaker with higher rating than that specified for your particular branch circuit.</li> <li>2. Check for proper fuse. You should be using a "Time Delay" fuse.</li> <li>3. Check for low voltage problem.</li> <li>4. Check the extension cord.</li> <li>5. Disconnect the other electrical appliances from circuit or operate the compressor on its own branch circuit.</li> </ol> <p>Check the extension cord.</p> <p>Check wiring connection inside terminal box area.</p> <p>Contact a Trained Service Technician.</p>
<p>High discharge pressure. Cannot be adjusted lower.</p>	<p>Adjustable pressure valve not functioning.</p>	<p><b>⚠ WARNING</b> Risk of bursting. <b>DO NOT</b> operate the compressor if this problem exists. Adjustable pressure valve must be replaced.</p>

## LIMITED WARRANTY

**DeVilbiss Air Power** Company warrants to the original purchaser who uses the product in a consumer application (personal, residential or household usage) that all products covered under this warranty are free from defects in material and workmanship for one year from the date of purchase. All products covered by this limited warranty which are used in commercial applications (i.e., income producing) are warranted to be free of defects in material and workmanship for 90 days from the date of original purchase. Products covered under this warranty include air compressors, air tools, service parts, pressure washers, and generators.

**DeVilbiss Air Power** Company will repair or replace, at DeVilbiss' option, products or components which have failed within the warranty period. Service will be scheduled according to the normal work flow and business hours at the service center location, and the availability of replacement parts. All decisions of DeVilbiss Air Power Company with regard to this limited warranty shall be final.

This warranty gives you specific legal rights, and you may also have other rights which vary from state to state.

### RESPONSIBILITY OF ORIGINAL PURCHASER (initial User):

- To process a warranty claim on this product, DO NOT return it to the retailer. The product must be evaluated by an Authorized Warranty Service Center. For the location of the nearest Authorized Warranty Service Center call 1-800-888-2468, Ext. 2, 24 hours a day, 7 days a week or visit our web site @ devap.com.
- Retain original cash register sales receipt as proof of purchase for warranty work.
- Use reasonable care in the operation and maintenance of the product as described in the Owners Manual(s).
- Deliver or ship the product to the nearest Authorized Warranty Service Center. Freight costs, if any, must be paid by the purchaser.
- Air compressors with 60 and 80 gallon tanks will be inspected at the site of installation. Contact the nearest Authorized Warranty Service Center that provides on-site service calls for service call arrangements.
- If the purchaser does not receive satisfactory results from the Authorized Warranty Service Center, the purchaser should contact DeVilbiss Air Power Company.

### THIS WARRANTY DOES NOT COVER:

- Merchandise sold as reconditioned, used as rental equipment, or floor or display models.
- Merchandise that has become damaged or inoperative because of ordinary wear, misuse\*, cold, heat, rain, excessive humidity, freeze damage, use of improper chemicals, negligence, accident, failure to operate the product in accordance with the instructions provided in the Owners Manual(s) supplied with the product, improper maintenance, the use of accessories or attachments not recommended by DeVilbiss Air Power Company, or unauthorized repair or alterations.
  - \* An air compressor that pumps air more than 50% during a one hour period is considered misuse because the air compressor is undersized for the required air demand.
- Repair and transportation costs of merchandise determined not to be defective.
- Costs associated with assembly, required oil, adjustments or other installation and start-up costs.
- Expendable parts or accessories supplied with the product which are expected to become inoperative or unuseable after a reasonable period of use, including but not limited to sanding disks or pads, saw and shear blades, grinding stones, springs, chisels, nozzles, o-rings, air jets, washers and similar accessories.
- Merchandise sold by DeVilbiss Air Power Company which has been manufactured by and identified as the product of another company, such as gasoline engines. The product manufacturer's warranty, if any, will apply.
- **ANY INCIDENTAL, INDIRECT OR CONSEQUENTIAL LOSS, DAMAGE, OR EXPENSE THAT MAY RESULT FROM ANY DEFECT, FAILURE OR MALFUNCTION OF THE PRODUCT IS NOT COVERED BY THIS WARRANTY.** Some states do not allow the exclusion or limitation of incidental or consequential damages, so the above limitation or exclusion may not apply to you.
- **IMPLIED WARRANTIES, INCLUDING THOSE OF MERCHANTABILITY OR FITNESS FOR A PARTICULAR PURPOSE, ARE LIMITED TO ONE YEAR FROM THE DATE OF ORIGINAL PURCHASE.** Some states do not allow limitations on how long an implied warranty lasts, so the above limitations may not apply to you.



213 Industrial Drive • Jackson, TN 38301-9615  
Telephone: 1-800-888-2468 , Ext. 2  
FAX: 1-800-888-9036

# NOTES

## Free Manuals Download Website

<http://myh66.com>

<http://usermanuals.us>

<http://www.somanuals.com>

<http://www.4manuals.cc>

<http://www.manual-lib.com>

<http://www.404manual.com>

<http://www.luxmanual.com>

<http://aubethermostatmanual.com>

Golf course search by state

<http://golfingnear.com>

Email search by domain

<http://emailbydomain.com>

Auto manuals search

<http://auto.somanuals.com>

TV manuals search

<http://tv.somanuals.com>