

Wireless laser mouse pro

Model # IH-M135ZR, IH-M136ZN, IH-M137ZD

Product Knowledge Base



Frequently Asked Questions (FAQs)

1. What is included in the box?

- wireless laser mouse pro
- mini USB receiver
- 2 AA DURACELL® batteries
- Installation CD
- User manual

2. What are the Features?

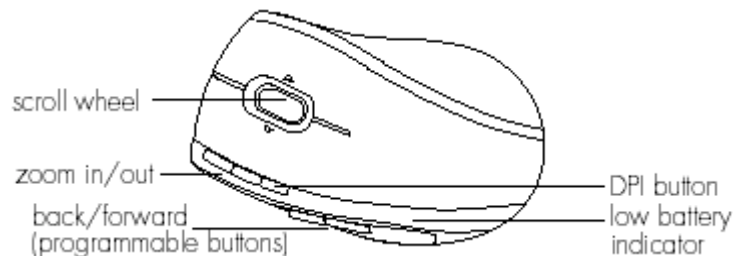
- Plug-n-play—no syncing needed
- 5 quick launch media buttons
- Low battery indicator
- Horizontal and vertical scrolling
- Programmable buttons
- Cursor speed button—change mouse sensitivity on the fly

3. What are the system requirements?

- Windows® 2000, XP or Windows Vista®
- CD-ROM drive
- USB port

4. How to Setup the Mouse?

Your new mouse



- **Zoom out** and **zoom in**—Press to zoom in or out of a photo or document.
- **Back** and **forward** —Press **back** to access the previous page or folder. Press **forward** to open the next page or folder.
- **Scroll wheel** —Move the scroll wheel left or right to scroll horizontally. Roll the wheel to scroll up and down.
- **DPI button** —your mouse has two sensitivity settings: standard and high-performance. High-performance mode allows the cursor to move very

quickly and is useful for activities such as gaming. Press the DPI button to switch from standard mode to high-performance mode and back. Press the DPI button for 3 seconds to switch to media remote mode.

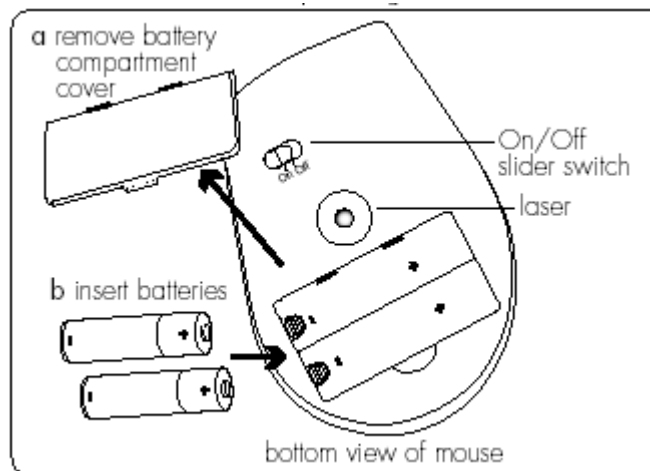
- **Low battery indicator** —this indicator flashes when the batteries need to be replaced.

Note: Some button functions require installation of the included software.

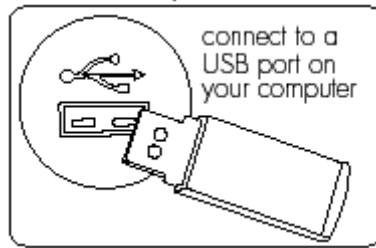
Note: To use the horizontal (side-to-side) scroll function on a Windows 2000 or XP computer, you must install the supplied software. Windows Vista users do not have to install the software to use the horizontal scroll function.

Connect hardware

Remove the battery compartment cover, install 2 AA batteries and replace the battery compartment cover. (The mouse will operate on a single battery. Install two batteries to double the operating time.)

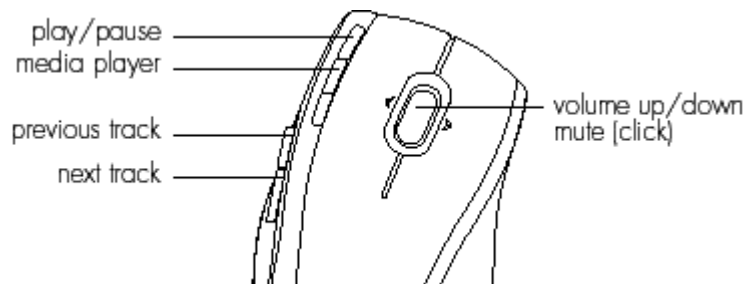


- Slide the **On/Off** switch on the bottom of the mouse to **On**. The low battery indicator flashes for 10 seconds.
- Connect the mini USB receiver to a USB port on your computer. The drivers for your mouse load automatically.



- Start using your mouse.

Quick launch media buttons



To use the quick launch media buttons, press the DPI button for 3 seconds. The low battery indicator flashes for 3 seconds to show that your mouse is now in media remote mode.

In media remote mode you can use your mouse to control the media player on your computer.

Press the DPI button again for 3 seconds to return to normal mouse mode. To take advantage of the advanced functions of your mouse, such as the quick launch media buttons, install the supplied software.

5. How to install the software?

- Insert the installation CD into your computer. On the screen that appears, click **install**.
- An **InstallShield Wizard** dialog box displays. Click **Next**.
- The **Choose Destination Location** dialog box displays. Click **Next** to accept the default installation location.

- Once the installation is complete, restart the computer when prompted. When the computer restarts, a mouse icon displays in the system tray.

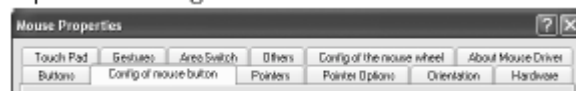


6. How to customize the mouse buttons?

Double-click the mouse icon in the system tray.

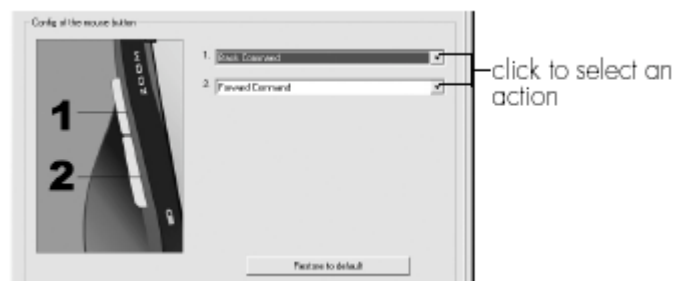


This opens a dialog box.



Select the **Config** of mouse button tab.

Click the drop-down list to select an action for each button.



Click **OK** to accept the changes and exit.

Note: Only the two buttons on the side of the mouse are programmable.

7. How to customize the mouse scroll wheel?

- Double-click the mouse icon in the system tray.

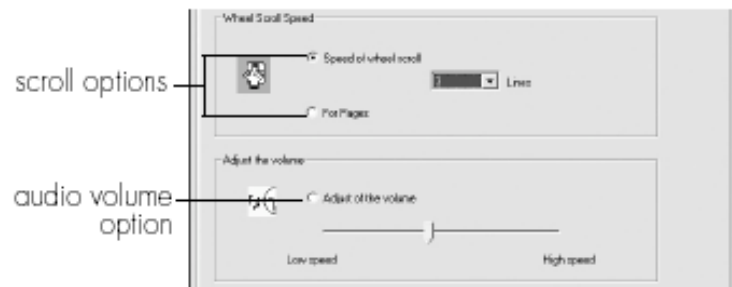


- Select the **Config** of the mouse wheel tab.



- Select **Speed of wheel scroll** and choose how many lines should scroll when the wheel is rotated one click, or select **For Pages** to scroll a whole page with each click.

To set the mouse wheel to adjust the audio volume instead, select **Adjust of the volume**, and adjust the slider to determine how fast the volume changes when you turn the wheel.



- Click **OK** to accept the changes and exit.

8. Where can I download the latest driver?

Visit www.life-works.com/drivers

9. Where can I find warranty information?

Visit www.life-works.com/warranty

Troubleshooting

1. My mouse does not work at setup

- Ensure the mini USB receiver is connected.
- Connect the mini USB receiver to a different USB port.
- Check that the battery is inserted correctly into the battery compartment.
- Install a fresh battery.
- Move the mouse closer to the mini USB receiver.
- Connect the USB receiver to a different USB port. Try a USB port on the computer, not a USB hub.

2. Mouse has stopped working

- Check that the battery is good. If necessary, replace the battery.
- Ensure the laser sensor on the mouse is clean.

3. Low battery indicator continues to flash

- Install a fresh battery. (The mouse will operate on a single battery. Install two batteries to double the operating time.)

Product Operating Tips

- Your mouse will operate from as far away as 30 ft. (10 m) from your computer.
- Customize the programmable buttons on your mouse for greater functionality.
- The scroll wheel is also a button. Press the scroll wheel (without rolling it) to automatically scroll a document or web page, then move your mouse up/down (vertical scrolling) or left/right (horizontal scrolling) to set the automatic scroll speed.

- Your mouse has two sensitivity settings: standard and high-performance mode. High-performance mode allows the cursor to move very quickly and is useful for activities such as gaming. Press the DPI button (behind the scroll wheel) to switch from standard mode to high-performance mode and back.
- Switch off your mouse when traveling or to conserve battery life.

For questions regarding your iHome computer accessory, please visit our website at www.life-works.com or call 1-877-Life-540.

2009 © LifeWorks Technology Group LLC.

iHome™ is a trademark of SDI Technologies Inc. used under license.

Windows Vista® is either a registered trademark or trademark of

Microsoft Corporation in the United States and/or other countries.

All other brands and logos are trademarks of their respective companies.

Free Manuals Download Website

<http://myh66.com>

<http://usermanuals.us>

<http://www.somanuals.com>

<http://www.4manuals.cc>

<http://www.manual-lib.com>

<http://www.404manual.com>

<http://www.luxmanual.com>

<http://aubethermostatmanual.com>

Golf course search by state

<http://golfingnear.com>

Email search by domain

<http://emailbydomain.com>

Auto manuals search

<http://auto.somanuals.com>

TV manuals search

<http://tv.somanuals.com>